

Product datasheet for **RG211426**

ZNF571 (NM_016536) Human Tagged ORF Clone

Product data:

Product Type:	Expression Plasmids
Product Name:	ZNF571 (NM_016536) Human Tagged ORF Clone
Tag:	TurboGFP
Symbol:	ZNF571
Synonyms:	HSPC059
Mammalian Cell Selection:	Neomycin
Vector:	pCMV6-AC-GFP (PS100010)
E. coli Selection:	Ampicillin (100 ug/mL)



[View online »](#)

ORF Nucleotide Sequence:

>RG211426 representing NM_016536
 Red=Cloning site Blue=ORF Green=Tags(s)

TTTTGTAATACGACTCACTATAGGGCGGCCGGAATTCGTCGACTGGATCCGGTACCGAGGAGATCTGCC
 GCC**GCGATCGCC**

ATGCCCACTTGTGGTACTTTAGGGATGTGGCCATTGACTTCTCTCAGGAGGAATGGGAATGCCTGG
 ACCCTGCTCAGAGGGACTTGTACAGGGATGTGATGTTGGAGAACTACAGCAACCTGATCTCATTGGACTT
 GGAAATCCAGTTGTGTGACCAAAAAGTTATCTCCAGAAAAGGAAATTTATGAAATGGAATCACTCCAGTGG
 GAGAATATGGGAAACGTATCAACCATCACCTTCAATACAATGGTCTTGAGACAATATGGAGTGCAAAAG
 GCAACTTAGAGGGTCAAGAAGCAAGTCAGGAAGGGCTTTACATGTGTGCAAAAATTACCTGTGAAGAAAA
 GGCCACTGAAAGTCATTCAACCTCTTCTACTTTTCATCGGATAATTCCTACCAAGGAAAAATTGTACAAA
 TGTAAGGAATGCAGACAAGTTTCAGCTACCTGTCATGCCTTATCAACATGAGGAAAAATCATAATATAG
 AAAATGCTCTGAAGTTAAGAAACACAGGAATACCTTTAGCAAAAAGCCAAGCTATATTTCAACATCAGAG
 AATTCAGACTGGTGAGAAACCTTATGAGTGTATGGAATGTGAAAGGCCTTTGGTCGACTTCTGATCTC
 ATCAACATCAGAAAATTCATACTAATGAAAAACCTTATCAGTGTAAACGATGTGGGAAAGCTTTTATTC
 GTGGTTCACAGCTCACTGAACATCAGAGAGTTCATACAGGAGAGAAACCATATGATTGTAAGAAATGTGG
 AAAAGCCTTTAGTTATTGTTTCACAATACTCTTCATCAGAGAATTCATAGTGGTAAAAACCTATGAA
 TGTAAGGATTGTGGGAAGGCCTTATTCTTGGCTCACTTACTTACCATCAGAGAATTCATAGTGGT
 AGAAACCTTATGAGTGTAAAGGAATGTGAAAGGCCTTTATTCTTGGTTCACACCTTACATACCATCAGAG
 AGTTCACTACTGGTAAAAAGCCTTACATATGTAAGAATGTGGGAAAGCCTTTTATGTGCCTCCCAACTG
 AATGAACATCAGAGAATTCATACAGGAGAGAAACCTATGAATGTAAGAATGCGGGAAGACCTTTTTTTC
 GTGGCTCACAACCTTACTTACCACCTGAGAGTTCATTGAGTGTGAGAGACCTTATAAATGCAAGAATGTGG
 GAAAGCCTTTATTCTAATTCTAATCTTATTCAACATCAAAGAATTCATACCGGAGAGAAAGCCCTACAAA
 TGTAAGGAATGTGAAAGGCCTTTATTTGTGGCAAACTTATGTAACATCAGAGAATTCATACAGGTG
 AGAAACCTTTGAATGTAAGGAATGTGAAAGGCCTTTATTCGTGTTGCATATCTTACTCAACATGAGAA
 AATTCATGGTGAGAAACATTATGAATGTAAGGAATGTGGGAAGACCTTTGTACGTGCTACACAACCTTACA
 TATCATCAAAGAATTCATACAGGTGAAAGCCCTACAAATGTAAGGAATGTGACAAGGCCTTTATTTATG
 GCTCACAACCTTAGTGAACATCAGAGAATTCACAGAGGTGAAAAACCTTATGAATGTAACAGTGTGGGAA
 GGCTTTTATTCGTGGCTCACACCTTACTGAACATCTGAGAACTCATACTGGAGAGAAACCTATGAATGT
 AAGGAATGTGGGAGGCCTTTAGTCGTGGCTCAGAACATCTCTGCATCAAAGGATCCATACTGGTGTGAGA
 AACCTATACATGTGCCAGTGTGGTAAAGACTTTAGATGTCCTTCAACAACCTTACTCAACATACAAGGC
 TCATAAT

ACGCGTACGCGGCCGCTCGAG - GFP Tag - GTTTAA

Protein Sequence:

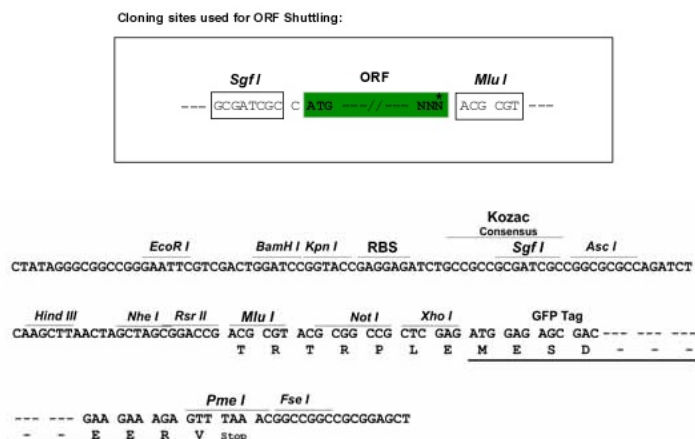
>RG211426 representing NM_016536
 Red=Cloning site Green=Tags(s)

MPHLLVTFRDVAIDFSQEEWECLDPAQRDLYRDVMLENYSNLISLDLESSCVTKKLSPEKEIYEMESLQW
 ENMGKRINHHLQYNGLDNMECKGNLEGQEQEGLYMCVKITCEEKATESHSTSSTFHRIIPTKEKLYK
 CKECRQGFSYLSCLIQHEENHNIEKCEVKKHRNTFSKKPSYIQHQRIQTGEKPYECMECGKAFGRSDI
 IQHQKIHTNEKPYQCNACGKAFIRGSQLTEHQRVHTGEKPYDCKKCGKAFSYCSQYTLHQRIHSGEKPYE
 CKDCGKAFILGSQLTYHQRIHSGEKPYECKEKGKAFILGSHLTYHQRVHTGEKPYICEKCGKAFILCASQL
 NEHQRIHTGEKPYECKEKGKTFFRGSQLTYHLRVHSGERPYPYKCKEKGKAFISNSNLIHQHQRIHTGEKPYK
 CKECGKAFICGKQLSEHQRIHTGEKPFCKEKGKAFIRVAYLTQHEKIHGEKHYECKEKGKTFVRATQLT
 YHQRIHTGEKPYKCKECDKAFIYGSQLEHQRIHRGEKPYECKQCGKAFIRGSHLTEHLRHTGEKPYEC
 KECGRAFSRSGSEHTLHQRIHTGEKPYTCVQCGKDFRCPQLTQHTRLHN

TRTRPLE - GFP Tag - V

Restriction Sites:

SgfI-MluI

Cloning Scheme:


ACCN: NM_016536

ORF Size: 1827 bp

OTI Disclaimer: The molecular sequence of this clone aligns with the gene accession number as a point of reference only. However, individual transcript sequences of the same gene can differ through naturally occurring variations (e.g. polymorphisms), each with its own valid existence. This clone is substantially in agreement with the reference, but a complete review of all prevailing variants is recommended prior to use. [More info](#)

OTI Annotation: This clone was engineered to express the complete ORF with an expression tag. Expression varies depending on the nature of the gene.

Components: The ORF clone is ion-exchange column purified and shipped in a 2D barcoded Matrix tube containing 10ug of transfection-ready, dried plasmid DNA (reconstitute with 100 ul of water).

Reconstitution Method:

1. Centrifuge at 5,000xg for 5min.
2. Carefully open the tube and add 100ul of sterile water to dissolve the DNA.
3. Close the tube and incubate for 10 minutes at room temperature.
4. Briefly vortex the tube and then do a quick spin (less than 5000xg) to concentrate the liquid at the bottom.
5. Store the suspended plasmid at -20°C. The DNA is stable for at least one year from date of shipping when stored at -20°C.

RefSeq: [NM_016536.1](#)

RefSeq Size: 4132 bp

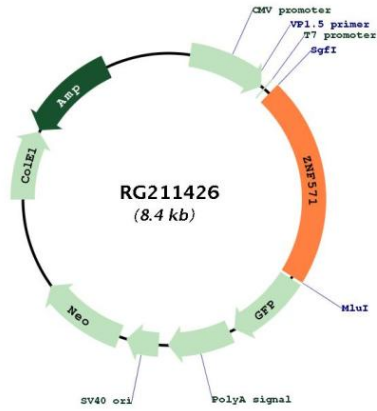
RefSeq ORF: 1830 bp

Locus ID: 51276

UniProt ID: [Q7Z3V5](#)

Cytogenetics: 19q13.12
 Domains: KRAB, zf-C2H2
 Gene Summary: May be involved in transcriptional regulation.[UniProtKB/Swiss-Prot Function]

Product images:



Circular map for RG211426