

Product datasheet for **RG211365**

NOTCH1 (NM_017617) Human Tagged ORF Clone

Product data:

Product Type: Expression Plasmids
Product Name: NOTCH1 (NM_017617) Human Tagged ORF Clone
Tag: TurboGFP
Symbol: NOTCH1
Synonyms: AOS5; AOVD1; hN1; TAN1
Mammalian Cell Selection: Neomycin
Vector: pCMV6-AC-GFP (PS100010)
E. coli Selection: Ampicillin (100 ug/mL)
ORF Nucleotide Sequence: >RG211365 representing NM_017617
Red=Cloning site Blue=ORF Green=Tags(s)

TTTTGTAATACGACTCACTATAGGGCGGCCGGAATTCGTCGACTGGATCCGGTACCGAGGAGATCTGCC
 GCCCGGATCGCC

ATGCCGCCGCTCCTGGCGCCCTGCTCTGCCTGGCGCTGCTGCCCGGCTCGCCGCACGAGGCCCGCAT
 GCTCCCAGCCCGGTGAGACCTGCCTGAATGGCGGGAAGTGTGAAGCGGCAATGGCACGGAGGCCTGCGT
 CTGTGGCGGGCCTTCGTGGGCCGCGATGCCAGGACCCCAACCCGTGCCTCAGCACCCCTGCAAGAAC
 GCCGGGACATGCCACGTGGTGGACCGCAGAGGCGTGGCAGACTATGCCTGCAGCTGTGCCCTGGGCTTCT
 CTGGGCCCTCTGCCTGACACCCCTGGACAATGCCTGCCTCACCAACCCCTGCCCAACGGGGGCACCTG
 CGACCTGCTCACGCTGACGGAGTACAAGTGCCGCTGCCCGCCCGGCTGGTCAGGAAATCGTGCCAGCAG
 GCTGACCCGTGCGCCTCCAACCCCTGCGCCAACGGTGGCCAGTGCCTGCCCTTCGAGGCCTCCTACATCT
 GCCACTGCCACCCAGCTTCCATGGCCCCACCTGCCGGCAGGATGTCAACGAGTGTGGCCAGAAGCCCGG
 GCTTTGCCGCCACGGAGGCACCTGCCACAACGAGGTCGGCTCCTACCGCTGCGTCTGCCGCGCCACCCAC
 ACTGGCCCAACTGCGAGCGGCCCTACGTGCCCTGCAGCCCTCGCCCTGCCAGAACGGGGGCACCTGCC
 GCCCACGGGCGACGTACCCACGAGTGTGCCTGCCTGCCAGGCTTACCAGGCAAGTGTGAGGAAAA
 TATCGACGATTGTCCAGGAAACAACGCAAGAACGGGGTGCCTGTGTGGACGGCGTGAACACCTACAAC
 TGCCGCTGCCCGCCAGAGTGGACAGGTCACTGTACCGAGGATGTGGACGAGTGCAGCTGATGCCAA
 ATGCCTGCCAGAACGGCGGGACCTGCCACAACCCACGGTGGCTACAACGCTGTGTGTCAACGGCTG
 GACTGGTGGAGACTGCAGCGAGAACATTGATGACTGTGCCAGCGCCGCTGCTTCCACGGCGCCACCTGC
 CATGACCGTGTGGCCTCTTCTACTGCGAGTGTCCCCATGGCCGCACAGGCTGTGTGCCACCTCAACG
 ACGCATGCATCAGCAACCCCTGTAAACGAGGGCTCCAACGCGACCAACCCCTGTCAATGGCAAGGCCAT
 CTGCACCTGCCCTCGGGGTACACGGGCCCGCCTGCAGCCAGGACGTGGATGAGTGTCTCGCTGGGTGCC
 AACCCCTGCGAGCATGCGGGCAAGTGCATCAACACGCTGGGCTCCTTCGAGTGCCAGTGTCTGCAGGGCT
 ACACGGGCCCCCGATGCGAGATCGACGTCAACGAGTGCCTCGAACCCGTGCCAGAACGACGCCACCTG
 CCTGGACCAGATTGGGGAGTTCAGTGCATCTGCATGCCCGGCTACGAGGTTGTGACTGCGAGGTCAAC



[View online »](#)

ACAGACGAGTGTGCCAGCAGCCCCTGCCTGCACAATGGCCGCTGCCTGGACAAGATCAATGAGTTCCAGT
 GCGAGTGGCCACGGGCTTCACTGGGCATCTGTGCCAGTACGATGTGGACGAGTGTGCCAGCACCCTG
 CAAGAATGGTGCCAAGTGCCTGGACGGACCCAACACTTACACCTGTGTGTGCACGGAAGGTACACGGG
 ACGCACTGCGAGGTGGACATCGATGAGTGCACCCGACCCTGCCACTACGGCTCCTGCAAGGACGGCG
 TCGCCACCTTACCTGCCTCTGCCGCCAGGCTACACGGGCCACCACTGCGAGACCAACATCAACGAGTG
 CTCCAGCCAGCCCTGCCGCCACGGGGCACCTGCCAGGACCGCGACAACGCCTACCTCTGCTTCTGCCTG
 AAGGGGACCACAGGACCCAACCTGCGAGATCAACCTGGATGACTGTGCCAGCAGCCCTGCCACTCGGGCA
 CCTGTCTGGACAAGATCGATGGCTACGAGTGTGCCTGTGAGCCGGGCTACACAGGGAGCATGTGTAACAT
 CAACATCGATGAGTGTGCGGGCAACCCCTGCCACAACGGGGGCACCTGCCAGGACGGCATCAATGGCTTC
 ACCTGCCGCTGCCCGAGGGCTACCACGACCCACCTGCCTGTCTGAGGTCAATGAGTGCAACAGCAACC
 CCTGCGTCCACGGGGCTGCCGGGACAGCCTCAACGGGTACAAGTGCAGTGTGACCCTGGTGGAGTGG
 GACCAACTGTGACATCAACAACAATGAGTGTGAATCCAACCTTGTGTCAACGGCGGCACCTGCAAGAC
 ATGACCAGTGGCTACGTGTGCACCTGCCGGGAGGGCTTACGGGTCCCACTGCCAGACCAACATCAACG
 AGTGTGCGTCAAACCATGTCTGAACCAGGGCAGTGTATTGACGACGTTGCCGGGTACAAGTGAACCTG
 CCTGCTGCCCTACACAGGTGCCAGTGTGAGGTGGTGTGCCCCGTGTGCCCCAGCCCTGCAGAAAC
 GCGGGGAGTGCAGGCAATCCGAGGACTATGAGAGCTTCTCCTGTGTCTGCCCCAGGGCTGGCAAGCAG
 GGCAGACCTGTGAGGTGACATCAACGAGTGCCTTCTGAGCCCGTCCGGGCACGGCGCATCCTGCCAGAA
 CACCCACGGCGGCTACCGCTGCCACTGCCAGGCCGGCTACAGTGGGCGCAACTGCCAGACCGACATCGAC
 GACTGCCGGCCCAACCCGTGTCAACAACGGGGCTCCTGCACAGACGGCATCAACACGGCCTTCTGCGACT
 GCCTGCCCGGCTTCCGGGGCACTTCTGTGAGGAGGACATCAACGAGTGTGCCAGTACCCTGCCGCA
 CGGGGCCAACTGCACGGACTGCGTGGACAGCTACACGTGCACCTGCCCGCAGGCTTACGCGGATCCAC
 TGTGAGAAACAACCGCTGACTGCACAGAGAGCTCCTGCTTCAACGGTGGCAGCTGCGTGGACGGCATCA
 ACTCGTTCACCTGCCTGTGTCCACCCGGCTTACGGGCAGCTACTGCCAGCAGATGTCAATGAGCCGA
 CTGACAGCCCTGCCTGCATGGCGGCACCTGTGAGGACGGCTGCGGCTCCTACAGGTGCACTGCCCCAG
 GGCTACACTGGCCCAACTGCCAGAACCTTGTGCACTGGTGTGACTCCTCGCCCTGCAAGAACGGCGGCA
 AATGTGTGGCAGACCCACACCCAGTACCGCTGCGAGTGCACAGCGGCTGGACCGGCTTACTGCGACGT
 GCCCAGCGTGTCTGTGAGGTGGCTGCGCAGCGACAAGGTGTTGACGTTGCCCGCTGTGCCAGCATGGA
 GGGCTCTGTGTGGACGCGGGCAACACGCACCACTGCCGCTGCCAGGCGGGCTACACAGGCAGTACTGTG
 AGGACCTGGTGGACGAGTGTCAACCCAGCCCTGCCAGAACGGGGCCACCTGCACGGACTACCTGGGCGG
 CTACTCCTGCAAGTGCCTGGCCGGCTACCACGGGGTGAAGTGTCTGAGGAGATCGACGAGTGCCTCTCC
 CACCCCTGCCAGAACGGGGCACCTGCCTGCACCTCCCAACACCTACAAGTGTCTGCCACGGGGCA
 CTAGGGTGTGCACTGTGAGATCAACGTGGACGACTGCAATCCCCCGTTGACCCCGTGTCCCGGAGCCC
 CAAGTGTCTTAAACAACGGCACCTGCGTGGACAGGTGGGCGGCTACAGTGCACCTGCCCGCCGGGCTTC
 GTGGGTGAGCGCTGTGAGGGGGATGTCAACGAGTGCCTGTCCAATCCCTGCGACGCCCCTGGCACCCAGA
 ACTGCGTGCAGCGCTCAATGACTTCCACTGCGAGTGCCTGTGGTGCACACCGGGCGCCGCTGCGAGTC
 CGTCATCAATGGCTGCAAGGCAAGCCCTGCAAGAATGGGGGCACCTGCGCCGTGGCCTCCAACACCGCC
 CGCGGGTTCATCTGCAAGTGCCTGCGGGCTTCCGAGGGCGCCACGTGTGAGAATGACGCTCGTACCTGCG
 GCAGCCTGCGCTGCCTCAACGGCGGCACATGCATCTCCGGCCCGCAGCCCCACCTGCCTGTGCCTGGG
 CCCCTTACGGGGCCCCGAATGCCAGTTCGGGGCAGCAGCCCTGCCTGGGCGGCAACCCCTGTACAAC
 CAGGGGACCTGTGAGCCACATCCGAGAGCCCTTCTACCGTTGCCTGTGCCCGCCAAATTCACGCGGC
 TCTTGTGCCACATCCTGGACTACAGTTCGGGGGTGGGGCCGGGCGGACATCCCCCGCCGCTGATCGA
 GGAGGCGTGCAGCTGCCCGAGTGCCAGGAGGACGCGGGCAACAAGGTCTGCAGCCTGCAGTGAACAAC
 CACGCGTGCAGCTGGGACGGCGGTGACTGCTCCCTCAACTTCAATGACCCCTGGAAGAATGCACGAGT
 CTCTGCAGTGTGGAAGTACTTCAAGTGCAGGCCACTGTGACAGCCAGTGAACCTCAGCCGGCTGCCTCTT
 CGACGGCTTGTGACTGCCAGCGTGCAGGAGGCCAGTGAACCCCTGTACGACCAGTACTGCAAGGACCAC
 TTCAGCGACGGGCACTGCAGCAGGGCTGCAACAGCGCGGAGTGCAGTGGGACGGGCTGGACTGTGCGG
 AGCATGTACCCGAGAGGCTGGCGCCGGCACGCTGGTGGTGGTGGTGTGATGCCCGGAGCAGCTGCG
 CAACAGCTCCTTCCACTTCTGCGGGAGCTCAGCCGCGTGTGCACACCAACGTGCTTCAAGCGTGAC
 GCACACGGCCAGCAGATGATCTTCCCTACTACGGCCCGGAGGAGGAGTGCAGAACACCCCATCAAGC
 GTGCCCGGAGGGCTGGGCCGACCTGACGCCCTGCTGGGCCAGGTGAAGGCCTCGCTGCTCCCTGGTGG
 CAGCGAGGGTGGGCGGGCGGAGGGAGCTGGACCCATGGACGTCCGCGGCTCCATCGTCTACCTGGAG
 ATTGACAACCGGCAGTGTGTGACGGCTCCTCGCAGTGTCCAGAGTGCACCCGACGTGGCCGCAATTC

TGGGAGCGCTCGCCTCGCTGGGCAGCCTCAACATCCCCTACAAGATCGAGGCCGTGCAGAGTGAGACCGT
 GGAGCCGCCCCCGCGCGCAGCTGCACTTCATGTACGTGGCGGCGGCCCTTTGTGCTTCTGTTCTTC
 GTGGGCTGCGGGGTGCTGCTGTCCCAGCAAGCGCCGGCGGAGCAGATGGCCAGCTCTGGTCCCTGAGGGCT
 TCAAAGTGTCTGAGGCCAGCAAGAAGAAGCGGGGAGCCCTCGGCGAGGACTCCGTGGGCTCAAGCC
 CCTGAAGAAGCTTCAGACGGTGCCTCATGGACGACAACCAGAATGAGTGGGGGACGAGGACCTGGAG
 ACCAAGAAGTTCGGTTTCGAGGAGCCCGTGGTTCTGCCTGACCTGGACGACCAGACAGACCACCGGCAGT
 GGACTCAGCAGCACCTGGATGCCGCTGACCTGCGCATGTCTGCCATGGCCCCACACCGCCCCAGGGTGA
 GGTTGACGCCGACTGCATGGACGTCAATGTCCGCGGGCCTGATGGCTTCACCCCGCTCATGATCGCCTCC
 TGCAGCGGGGGCGCCTGGAGACGGCAACAGCGAGGAAGAGGAGGACGCGCCGGCCTCATCTCCGACT
 TCATCTACCAGGGCGCCAGCCTGCACAACCAGACAGACCGCACGGGCGAGACCGCCTTGACCTGGCCGC
 CCGCTACTCAGCTCTGATGCCGCAAGCGCCTGCTGGAGGCCAGCGCAGATGCCAACATCCAGGACAAC
 ATGGGCCGCACCCCGCTGCATGCGGCTGTGTCTGCCGACGACAAAGGTGTCTTCCAGATCCTGATCCGGA
 ACCGAGCCACAGACCTGGATGCCCGCATGCATGATGGCACGACGCCACTGATCCTGGCTGCCCGCTGGC
 CGTGGAGGGCATGCTGGAGGACCTCATCAACTCACACGCCGACGTCAACGCCGTAGATGACCTGGGCAAG
 TCCGCCCTGCACTGGGCCCGCGGTGAACAATGTGGATGCCGAGTTGTCTCTGAAGAACGGGGCTA
 ACAAGATATGCAGAACAACAGGGAGGAGACACCCTGTTTCTGGCCGCCGGGAGGGCAGCTACGAGAC
 CGCCAAGGTGCTGCTGGACCACTTTGCCAACGGGACATCACGGATCATATGGACCGCCTGCCGCGCGAC
 ATCGCACAGGAGCGCATGCATCACGACATCGTGAGGCTGCTGGACGAGTACAACCTGGTGCCAGCCCGC
 AGCTGCACGGAGCCCGCTGGGGGGCACGCCACCCTGTGCCCCCGCTCTGCTCGCCCAACGGCTACCT
 GGGCAGCTCAAGCCCGCGTGCAGGGCAAGAAGTCCGCAAGCCAGCAGCAAAGGCTGGCCTGTGGA
 AGCAAGGAGGCCAAGGACCTCAAGGCACGGAGGAAGAAGTCCCAGGAYGGCAAGGGCTGCCTGTGACA
 GCTCCGGCATGCTCTCGCCCGTGGACTCCCTGGAGTACCCCATGGTACCTGTGACAGCTGGCCTCGCC
 ACCACTGCTGCCCTCCCGTTCCAGCAGTCTCCGTCCGTGCCCTCAACCACCTGCCTGGGATGCCCGAC
 ACCCACCTGGGCATCGGGCACCTGAACGTGGCGGCAAGCCCGAGATGGCGGCGCTGGGTGGGGGGCGCC
 GGCTGGCCTTTGAGACTGGCCACCTCGTCTCTCCCACCTGCCTGTGGCCTCTGGCACCAGCACCCTCT
 GGGCTCCAGCAGCGGAGGGGCCCTGAATTTCACTGTGGCGGGTCCACCAGTTTGAATGGTCAATGCGAG
 TGGCTGTCCCGGCTGCAGAGCGGATGGTGCCGAACCAATAACAACCTCTGCGGGGGAGTGTGGCACCAG
 GCCCCTGAGCACACAGGCCCTCCCTGCAGCATGGCATGGTAGGCCGCTGCACAGTAGCCTTGTCTGC
 CAGCGCCTGTCCAGATGATGAGCTACCAGGGCCTGCCAGCACCCGGCTGGCCACCCAGCCTCACCTG
 GTGCAGACCCAGCAGGTGCAGCCAAAACTTACAGATGCAGCAGCAGAACCTGCAGCCAGCAAACATCC
 AGCAGCAGCAAAGCCTGCAGCCGCCACCACCACCACAGCCGACCTTGGCGTGAGCTCAGCAGCCAG
 CGGCCACCTGGGCGGAGCTTCTGAGTGGAGAGCCGAGCCAGGACAGCTGCAGCCACTGGGCCCCAGC
 AGCCTGGCGGTGCACACTATTCTGCCCCAGGAGAGCCCCGCCCTGCCACGTGCTGCCATCCTCGCTGG
 TCCCACCCGTGACCGCAGCCAGTTCTGACGCCCCCTCGCAGCACAGTACTCCTCGCCTGTGGACAA
 CACCCCAAGCCAGCTACAGGTGCCTGAGCACCCCTTCTCACCCCGTCCCCTGAGTCCCCTGACCAG
 TGGTCCAGCTCGTCCCGCATTCCAACGTCTCCGACTGGTCCGAGGGCGTCTCCAGCCCTCCCACCAGCA
 TGCAGTCCAGATCGCCCGCATTCCGGAGGCCTCAAG

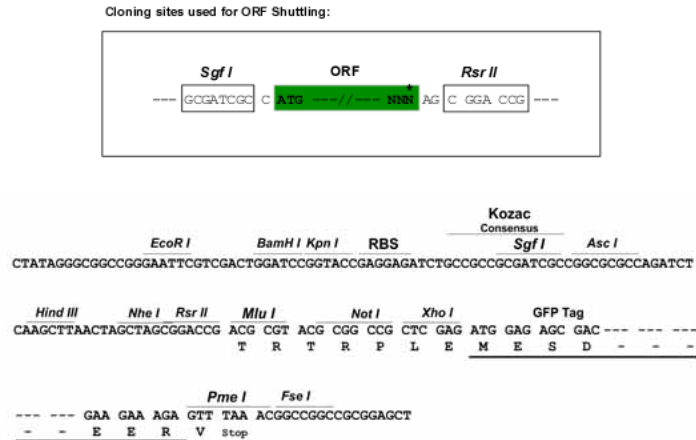
AGCGGACCGACGCGTACGCGGCCGCTCGAG - GFP Tag - GTTTAA

Protein Sequence: >RG211365 representing NM_017617
 Red=Cloning site Green=Tags(s)

MPPLLAPLLCLALLPALAARGPRCSQPGETCLNGGKCEAANGTEACVCGGAFVGPGRQDPNPCLSTPCKN
 AGTCHVDRRGVADYACSCALGFSGPLCLTPLDNACLTNPCRNGGTCDLLTLTEYKCRCPGWSGKSCQQ
 ADPCASNPCANGGQCLPFEASYICHCPPSFHGPTRQDVNECGQKPLGRHGGTCHNEVGSYRCVCRATH
 TGPNCERPYPVPCSPSPCQNGGTCRPTGDVTHEACACLPFGFTGQNCENIDDCPGNNCKNGGACVDGVNTYN
 CRCPPEWTGQYCTEDVDECQLMPNACQNGGTCNTHGGYNCVVCVNGWTGEDCSENIDDCASAAAFHGATC
 HDRVASFYCECPHGRTGLLCHLNDACISNPCNEGSNCDTNPVNGKAICTCPSGYTPACSQDVEDCSLGA
 NPCEHAGKCINTLGSFECQCLQGYTGPRCEIDVNECVSNPCQNDATCLDQIGEFQCICMPGYEGVHCEVN
 TDECASSPCLHNGRCLDKINEFQCECPTGFTGHLQYDVDECASTPCKNGAKCLDGPNTYTCVCTEGYTG
 THCEVDIDEDPDPCHYGSKDGVATFTCLCRPGYTGHHCEININECSSQPCRHHGGTCQDRDNAYLFCFL
 KGTTGPNCENINLDDCASSPCDSGTCLDKIDGYECACEPGYTGSMCNINIDECAGNPCHNGGTCEDGINGF
 TCRCEPGYHDPTCLSEVNECNSNPCVHGACRDSLNGYKCDGPGWGTNCDINNNECESNPCVNGGTCCKD
 MTSGYVCTCREGFSGPNCQTNINECASNPCLNQGTCIDDVAGYKCNLLPYTGATCEVVLAPCAPSPCRN
 GGECRQSEDEYESFSCVCPGWQAGQTCEVDINECVLSPCRHGASCQNTHTGGYRCHQAGYSGRNCETDID
 DCRPNPCHNGGCTDGINAFCDCLPGFRGTFCEEDINECASDPCRNGANCTDCVDSYTTCTCPAGFSGIH
 CENNTPDCTESSCFNGGTCVDGINSFTCLCPPGFTGSYQHDVNECDSQPCLHGGTCQDGCGRYRCTCPQ
 GYTGPNQNLVHWCDSPPCKNGGKQWHTHTYRCECPSGWTGLYCDVPSVSCVAAQRQGVDFVARLQCHG
 GLCVDAGNTHHCRCQAGYTGSYCEDLVDECSPSPCQNGATCTDYLGGYSCKCVAGYHGVNCSSEIDECLS
 HPCQNGGTCCLDLNPTYKCSPPRGTVGVHCEINVDDCNPPVDPVSRSPKCFNNGTCVDVQVGGYSCTCPPGF
 VGERCEGDVNECLSNPCDARGTQNCVQRVNDHFCECRAGHTGRRCESVINGCKGKPKNGGTCVASANTA
 RGFICKCPAGFEGATCENDARTCGSLRCLNGGTCISGPRSPCTCLCLGPF TGPECQFPASSPCLGGNPCYN
 QGTCEPTSESPFYRCLCPAKFNGLLCHILDYSFGGGAGRDIPPLIEEACELPECQEDAGNKVCSLQCNN
 HACGWDGGDCSLNFNDPWKNCTQSLQCWKYFSDGHCDSCNSAGCLFDGFDQRAEGQCNPLOYQYCKDH
 FSDGHCDQGCNSAECEWDGLDCAEHVPERLAAGTLVVVVLMPPEQLRNSSFHFLREL SRVLHTNVVFKRD
 AHGQQMIFPYYGREEELRKHPKRAAEGWAAPDALLGQVKASLLPGGSEGGRRRRELDPMVDRGSIYYLE
 IDNRQCVQASSQCFQSATDVAFLGALASLGSLNIPYKIEAVQSETVEPPPPAQLHFMYAAAAFVLLFF
 VGGCVLLSRKRRRQHQQLWFPEGFVSEASKKKRREPLGEDSVGLKPLKNASDGALMDDNQNEWGDEDLE
 TKKFRFEPPVLPDLDDQTDHRQWTQHLDAADLRMSAMAPTPPQGEVDADCMDVNVVRGPDGFTPLMIAS
 CSGGLETGNSEEEEDAPAVISDFIYQGASLHNQTDRTGETALHLAARYSRSDAAKRLLEASADANIQDN
 MGRTPHLAAVSADAQGVFQILIRNRATDL DARMHDGTTPLILAARLAVEGML EDL INSHADVNAVDDL GK
 SALHWA AVNNVDAAVVLLKNGANKDMQNNREETPLFLAAREGSYETAKVLLDHFANRDI TDHMDRLPRD
 IAQERMHHDIVRLLDEYNLVRSPQLHGAPLGGTPTLSPPLCSPNGYLGSLKPGVQGGKVKRKPSSKGLACG
 SKEAKDLKARRKKSQXGKGCLLDSSGMLSPVDSLESPHGYLSDVASPPLLPSPFQQSPSPLNHLPGMPD
 THLGIGHLNVAAPKEMAALGGGRLAFETGPPRLSHLPVASGTSTVLGSSSGGALNFTVGGSTSLNGQCE
 WLSRLQSGMVPNQYNPLRGSVAPGPLSTQAPSLQHGMVGPLHSSLAASALSQMMSYQGLPSTRLATQPHL
 VQTQQVQPNLQMQQNLQPANIQQQSLQPPPPPPQPHLGVSSAASGHLGRSFLSGEPSQADVQPLGPS
 SLAVHTILPQESPALPTSLPSSLVPPVTAQFLTPPSQHSYSSPVDNTPSHQLQVPEHPFLTPSPESPQD
 WSSSSPHSNVSDWSEGVSSPPTSMQSQIARIPEAFK

SGPTRRRLE - GFP Tag - V

Restriction Sites: SgfI-RsrII

Cloning Scheme:


ACCN: NM_017617

ORF Size: 7668 bp

OTI Disclaimer: Due to the inherent nature of this plasmid, standard methods to replicate additional amounts of DNA in E. coli are highly likely to result in mutations and/or rearrangements. Therefore, OriGene does not guarantee the capability to replicate this plasmid DNA. Additional amounts of DNA can be purchased from OriGene with batch-specific, full-sequence verification at a reduced cost. Please contact our customer care team at custsupport@origene.com or by calling 301.340.3188 option 3 for pricing and delivery.

The molecular sequence of this clone aligns with the gene accession number as a point of reference only. However, individual transcript sequences of the same gene can differ through naturally occurring variations (e.g. polymorphisms), each with its own valid existence. This clone is substantially in agreement with the reference, but a complete review of all prevailing variants is recommended prior to use. [More info](#)

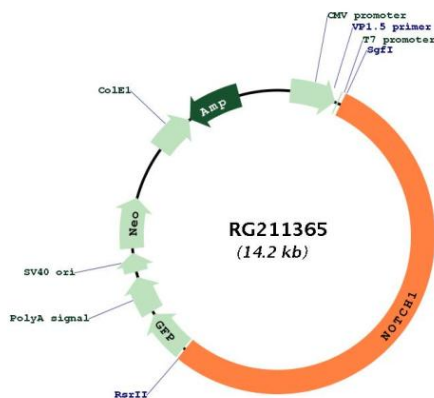
OTI Annotation: This clone was engineered to express the complete ORF with an expression tag. Expression varies depending on the nature of the gene.

Components: The ORF clone is ion-exchange column purified and shipped in a 2D barcoded Matrix tube containing 10ug of transfection-ready, dried plasmid DNA (reconstitute with 100 ul of water).

- Reconstitution Method:**
1. Centrifuge at 5,000xg for 5min.
 2. Carefully open the tube and add 100ul of sterile water to dissolve the DNA.
 3. Close the tube and incubate for 10 minutes at room temperature.
 4. Briefly vortex the tube and then do a quick spin (less than 5000xg) to concentrate the liquid at the bottom.
 5. Store the suspended plasmid at -20°C. The DNA is stable for at least one year from date of shipping when stored at -20°C.

RefSeq: [NM_017617.2](#), [NP_060087.2](#)
RefSeq Size: 9312 bp
RefSeq ORF: 7668 bp
Locus ID: 4851
UniProt ID: [P46531](#)
Cytogenetics: 9q34.3
Domains: NL, EGF_CA, ANK, EGF, EGF
Protein Families: Adult stem cells, Cancer stem cells, Druggable Genome, ES Cell Differentiation/IPS, Stem cell relevant signaling - DSL/Notch pathway
Protein Pathways: Dorso-ventral axis formation, Notch signaling pathway, Prion diseases
Gene Summary: This gene encodes a member of the NOTCH family of proteins. Members of this Type I transmembrane protein family share structural characteristics including an extracellular domain consisting of multiple epidermal growth factor-like (EGF) repeats, and an intracellular domain consisting of multiple different domain types. Notch signaling is an evolutionarily conserved intercellular signaling pathway that regulates interactions between physically adjacent cells through binding of Notch family receptors to their cognate ligands. The encoded preproprotein is proteolytically processed in the trans-Golgi network to generate two polypeptide chains that heterodimerize to form the mature cell-surface receptor. This receptor plays a role in the development of numerous cell and tissue types. Mutations in this gene are associated with aortic valve disease, Adams-Oliver syndrome, T-cell acute lymphoblastic leukemia, chronic lymphocytic leukemia, and head and neck squamous cell carcinoma. [provided by RefSeq, Jan 2016]

Product images:



Circular map for RG211365