

## Product datasheet for **RG210825**

### IFNA5 (NM\_002169) Human Tagged ORF Clone

#### Product data:

**Product Type:** Expression Plasmids  
**Product Name:** IFNA5 (NM\_002169) Human Tagged ORF Clone  
**Tag:** TurboGFP  
**Symbol:** IFNA5  
**Synonyms:** IFN-alpha-5; IFN-alphaG; INA5; INFA5; IeIF G  
**Mammalian Cell Selection:** Neomycin  
**Vector:** pCMV6-AC-GFP (PS100010)  
**E. coli Selection:** Ampicillin (100 ug/mL)  
**ORF Nucleotide Sequence:** >RG210825 representing NM\_002169  
Red=Cloning site Blue=ORF Green=Tags(s)

TTTTGTAATACGACTCACTATAGGGCGCCGGGAATTCGTCGACTGGATCCGGTACCGAGGAGATCTGCC  
GCC**CGATCGCC**

ATGGCCTTGCCCTTTGTTTTACTGATGGCCCTGGTGGTGTCTCACTGCAAGTCAATCTGTTCTCTGGGCT  
GTGATCTGCCTCAGACCCACAGCCTGAGTAACAGGAGGACTTTGATGATAATGCCACAAATGGGAAGAAT  
CTCTCCTTTCTCCTGCCTGAAGGACAGACATGACTTTGGATTTCCCTCAGGAGGAGTTTGATGGCAACCAG  
TTCCAGAAGGCTCAAGCCATCTCTGTCTCCATGAGATGATCCAGCAGACCTTCAATCTCTTCAGCACAA  
AGGACTCATCTGCTACTTGGGATGAGACTTCTAGACAAATTCTACACTGAACTTTACCAGCAGCTGAA  
TGACCTGGAAGCCTGTATGATGCAGGAGTTGGAGTGGAAGACTCCTCTGATGAATGTGGACTCTATC  
CTGACTGTGAGAAAATACTTTCAAAGAATCACCTCTATCTGACAGAGAAGAAATACAGCCCTTGTGCAT  
GGGAGGTTGTGAGAGCAGAAATCATGAGATCCTTCTTTATCAGCAAACCTTGAAGAAAGATTAAGGAG  
GAAGGAA

**ACGCGT**ACGCGGCCGCTCGAG - GFP Tag - GTTTAA

**Protein Sequence:** >RG210825 representing NM\_002169  
Red=Cloning site Green=Tags(s)

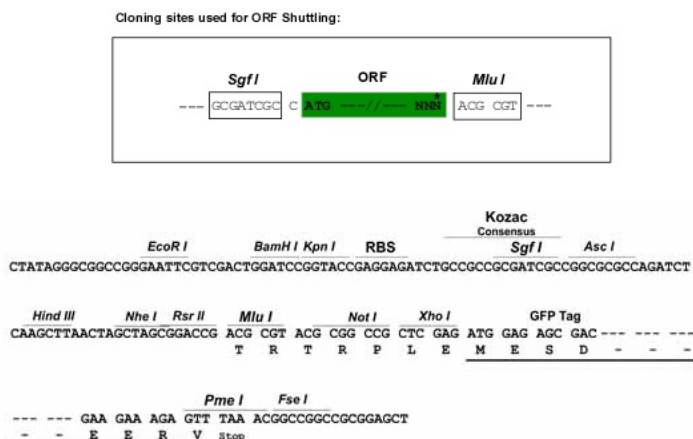
MALPFVLLMALVVLNCKSICSLGCDLPQTHLSNRRTLMIMAQMGRISPFSCLKDRHDFGFPQEEFDGNQ  
FQKAQAISVLHEMIQQTFNLFSTKDSSATWDETLDDKPHYTEL YQQLNDLEACMMQEVGVEDTPLMNVDSI  
LTVRKYQRITLYLTKKYSPCAWEVVRAEIMRSFSLSANLQERLRKE

**TRTRPLE** - GFP Tag - V

**Restriction Sites:** SgfI-MluI



[View online »](#)

**Cloning Scheme:**


**ACCN:** NM\_002169

**ORF Size:** 567 bp

**OTI Disclaimer:** The molecular sequence of this clone aligns with the gene accession number as a point of reference only. However, individual transcript sequences of the same gene can differ through naturally occurring variations (e.g. polymorphisms), each with its own valid existence. This clone is substantially in agreement with the reference, but a complete review of all prevailing variants is recommended prior to use. [More info](#)

**OTI Annotation:** This clone was engineered to express the complete ORF with an expression tag. Expression varies depending on the nature of the gene.

**Components:** The ORF clone is ion-exchange column purified and shipped in a 2D barcoded Matrix tube containing 10ug of transfection-ready, dried plasmid DNA (reconstitute with 100 ul of water).

**Reconstitution Method:**

1. Centrifuge at 5,000xg for 5min.
2. Carefully open the tube and add 100ul of sterile water to dissolve the DNA.
3. Close the tube and incubate for 10 minutes at room temperature.
4. Briefly vortex the tube and then do a quick spin (less than 5000xg) to concentrate the liquid at the bottom.
5. Store the suspended plasmid at -20°C. The DNA is stable for at least one year from date of shipping when stored at -20°C.

**RefSeq:** [NM\\_002169.3](#)

**RefSeq Size:** 570 bp

**RefSeq ORF:** 570 bp

**Locus ID:** 3442

**UniProt ID:** [P01569](#)

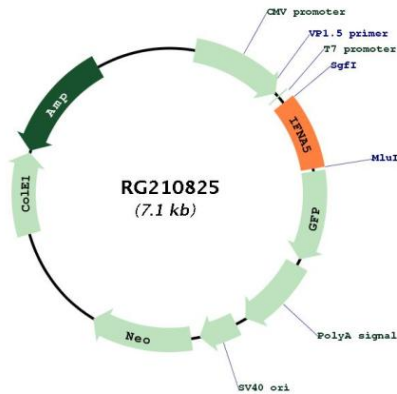
**Cytogenetics:** 9p21.3

**Protein Families:** Druggable Genome, Secreted Protein

**Protein Pathways:** Antigen processing and presentation, Autoimmune thyroid disease, Cytokine-cytokine receptor interaction, Cytosolic DNA-sensing pathway, Jak-STAT signaling pathway, Natural killer cell mediated cytotoxicity, Regulation of autophagy, RIG-I-like receptor signaling pathway, Toll-like receptor signaling pathway

**Gene Summary:** Produced by macrophages, IFN-alpha have antiviral activities. Interferon stimulates the production of two enzymes: a protein kinase and an oligoadenylate synthetase. [UniProtKB/Swiss-Prot Function]

**Product images:**



Circular map for RG210825