

Product datasheet for **RG210783**

TRPC6 (NM_004621) Human Tagged ORF Clone

Product data:

Product Type:	Expression Plasmids
Product Name:	TRPC6 (NM_004621) Human Tagged ORF Clone
Tag:	TurboGFP
Symbol:	TRPC6
Synonyms:	FSGS2; TRP6
Mammalian Cell Selection:	Neomycin
Vector:	pCMV6-AC-GFP (PS100010)
E. coli Selection:	Ampicillin (100 ug/mL)



[View online »](#)

ORF Nucleotide Sequence:

>RG210783 representing NM_004621
 Red=Cloning site Blue=ORF Green=Tags(s)

TTTTGTAATACGACTCACTATAGGGCGGCCGGAATTCGTCGACTGGATCCGGTACCGAGGAGATCTGCC
 GCC**CGATCGCC**

ATGAGCCAGAGCCCGCGCTTCGGGCCCGGAGGGGCAATTCTCCCGGGCGCTGCCGGAGCCGCTGCGC
 GGCACAACGAGAGCCAGGACTATCTGCTCATGGACTCGGAGCTGGGAGAAGACGGCTGCCGCAAGCCCC
 GCTGCCTTGCTACGGCTACTACCCTGCTTCGGGGATCTGACAACAGACTGGCTCACCGCGGCAGACA
 GTTCTCCGTGAGAAGGGGAGAAGGTTAGCTAATCGAGGACCAGCATACATGTTTGTAGTATCGCTCCACA
 GCCTATCTATAGAGGAGGAACGCTTTTTGGATGCAGCTGAATATGGTAACATCCCAGTGGTGCAGGAAGAT
 GTTAGAAGAAATGCCACTCACTCAACGTTAACTGTGTGGATTACATGGCCAGAATGCCCTACAGTTGGCA
 GTGGCCAATGAGCATCTGGAATACAGAACTTCTTCAAGAAAGAAAACCTCTCTCGAGTTGGGGATG
 CTTTGCTTCTAGCTATTAGTAAAGGTTATGTTCCGATTGTGGAAGCAATTCTCAGTCATCCGGCTTTTGC
 TGAAGGCAAGAGGTTAGCAACCAGCCCTAGCCAGTCTGAACTCCAGCAAGATGATTTTTATGCCTATGAT
 GAAGATGGGACACGGTTCTCCATGATGTGACTCCAATCATTCTGGCTGCCCACTGCCAGGAATATGAAA
 TTGTGCATACCCTCCTGCGGAAGGGTGCTAGGATTGAACGGCCTCATGATTATTTCTGCAAGTGCAATGA
 CTGCAACCAGAAAACAGAAGCATGACTCGTTTAGCCACTCCAGATCTAGGATTAATGCCTATAAAGGCCTG
 GCAAGTCCGGCTTACCTGTCATTGTCTAGTGAAGATCCAGTCAAGACGGCTTTAGAACTTAGCAATGAAC
 TGGCAGTTCTGGCCAATATTGAGAAAGAGTTCAAGAATGACTACAAAAACTGTCAATGCAGTGCAGAA
 CTTTGTGTTGGACTCCTTGATCTGTGCAGAAACTGAAGAAGTCGAGGCCATTCTGAATGGGGATGTT
 GAAACGCTCCAGAGTGGTATCACGGTCGCCCAATCTCAGCCGTTTAAAACCTGCCATTAATATGAAG
 TAAAAAATTTGTAGCTCATCCAACTGCCAACAGCAACTTCTCCATTTGGTATGAGAACTTTCTG
 TTTACGACAGCAGACAATGGCGGTCAAGTTCCTTGTGGTCTTGTCTGTTGCCATTGGACTGCCCTTCTG
 GCTCTCATTTACTGGTTTCTCCATGCAGCAAGATGGGGAAGATAATGCGTGGACCATTATGAAGTTT
 TAGCACACGCAGCCTCCTCACCATTTTCTGGGACTGCTAGTCAATGAATGCAGCTGACAGATTTGAAGG
 CAAAAACTCCTTCTAATGAAACCAGCACAGATAATGCAAAACAGCTGTTCCAGGATGAAAAACCTCTGC
 TTCTCATGGATGGAGATGCTCATTATATCTGGGTAATAGGCATGATATGGGCTGAATGTAAGAAATCT
 GGACTCAGGGCCCAAGGAATATTTGTTGAGTTGTGGAACATGCTTGATTTTGGTATGTTAGCAATTTT
 CGCAGCATCATTATTGCGAGATTATGGCATTTTGGCATGCTTCCAAAGCCAGAGCATCATTGACGCA
 AACGATACTTTGAAGACTTGACGAAAGTAACATTGGGAGACAATGTGAAATACTACAATTTGGCCAGGA
 TAAAGTGGGACCCCTCTGATCCTCAAATAATATCTGAAGGCTTTATGCAATTGCTGTAGTTTTAAGTTT
 CTCTAGGATAGCTTATATTTTACCAGCAAATGAAAGCTTTGGACCTCTGCAGATACACTTGAAGAAACA
 GTCAAAGACATCTCAAGTTCATGGTCATATTCATTATGGTGTGTTGTGGCCTTTATGATTGGAATGTTCA
 ATCTCTACTCCTACTACATTGGTGCAAAACAAAATGAAGCCTTCAACAACAGTTGAAGAGAGTTTTAAGAC
 ACTGTTCTGGGCTATATTTGGACTTTCTGAAGTGAATCAGTGGTCATCAACTATAACCACAAATTCATT
 GAAAACATTGGTTACGTTCTTTATGGAGTCTAATGTTACGATGGTCATTGTTTTGCTAAATATGTTAA
 TTGCCATGATCAACAGTTCATCCAGGAAATGAGGATGACGCTGATGTGGAGTGGAAATTTGCAAGGGC
 CAAACTCTGGTTTTCTACTTTGAGGAGGGCAGAACACTTCTGTACCCTTCAATCTGGTGCCGAGTCCA
 AAGTCCCTGTTTTATCTTACTGAAGCTTAAAAAATGGATTTCTGAGCTGTTCCAGGGCCATAAAAAAG
 GTTCCAGGAAGATGCAGAGATGAACAAGATAAATGAAGAAAAGAACTTGAATTTTAGGAAGTATGA
 AGACCTTTCAAAATATCACTTGACAAAAACAGGTTGGGCACAATAAACACCAAGTATAAGGAGCTCA
 GAAGATTTCCATCTAAATAGTTTCAATAATCTCCAAGACAATATCAGAAAAATAAGAAAAGGCTCATT
 AAAGATATGACTGCAGGCCAGATAGATAAGGAGAGTGTGAAGTGAACGAAGGGGAAGTGAAGGAAAT
 TAAGCAGGACATCTCAAGTCTCCGCTATGAACTCCTTGAAGAAAAATCTCAGAATACAGAAGACCTAGCA
 GAACCTATTAGAGAACTTGGAGAGAAATATCCATGGAACCAATCAAGAGGAAACCAATAGA

ACGCGTACGCGGCCGCTCGAG - GFP Tag - GTTTAA

Protein Sequence: >RG210783 representing NM_004621
 Red=Cloning site Green=Tags(s)

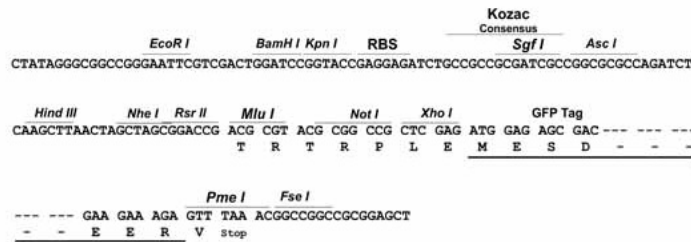
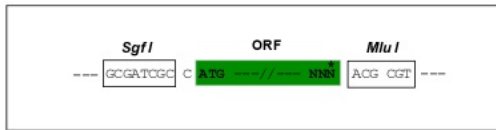
MSQSPAFGPRRGSSPRGAAGAAARRNESQDYLLMDELGEDGCPQAPLPCYGYPCFRGSDNRLAHRRT
 VLREKRRRLANRGPAYMFSRSTSLSIEEERFLDAAEYGNIPVVRKMLEECHSLNVNVDYMGQNALQLA
 VANEHLEITELLKKNELSRVGDALLLAISKGYVRIVEAISHPAFAEGKRLATSPSQSELQDDFYAYD
 EDGTRFSDVTPPIILAAHCQEYEVHTLLRKGARIERPHDYFCKCNDCNQKQKHDSFSHSRSTRINAYKGL
 ASPAYLSLSSDPVMTALEL SNELAVLANIEKEFKNDYKLSMQCKDFVVGLLDLCRNTEEVAILNGDV
 ETLQSGDHGRPNLSRLKLAIKYEVKVFVAHPNCQQQLLSIWYENLSGLRQQTMAVKFLVVLAVAIGLPFL
 ALIYWFAPCSKMGKIMRGPFMKFVAHAASFTIFLGLLVMNAADRFEGTKLLPNETSTDNAKQLFRMKTSC
 FSWMEMLIISWVIGMIWAECKEIWTQGPKEYLFELWNMLDFGMLAIFAASFIARFMAFWHASKAQSIIDA
 NDTLKDLTKVTLGDNVYNNLARIKWDPSPQIIISEGLYAIAVVLSFSRIAYILPANESFGPL

TRTRPLE - GFP Tag - V

Restriction Sites: SgfI-MluI

Cloning Scheme:

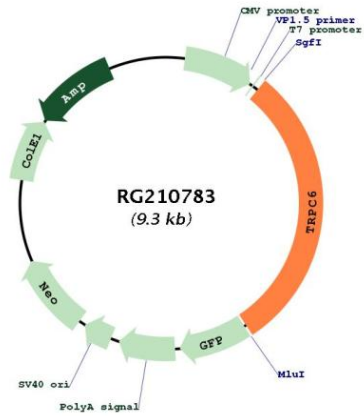
Cloning sites used for ORF Shutting:



ACCN: NM_004621

ORF Size:	2793 bp
OTI Disclaimer:	<p>Due to the inherent nature of this plasmid, standard methods to replicate additional amounts of DNA in E. coli are highly likely to result in mutations and/or rearrangements. Therefore, OriGene does not guarantee the capability to replicate this plasmid DNA. Additional amounts of DNA can be purchased from OriGene with batch-specific, full-sequence verification at a reduced cost. Please contact our customer care team at custsupport@origene.com or by calling 301.340.3188 option 3 for pricing and delivery.</p> <p>The molecular sequence of this clone aligns with the gene accession number as a point of reference only. However, individual transcript sequences of the same gene can differ through naturally occurring variations (e.g. polymorphisms), each with its own valid existence. This clone is substantially in agreement with the reference, but a complete review of all prevailing variants is recommended prior to use. More info</p>
OTI Annotation:	This clone was engineered to express the complete ORF with an expression tag. Expression varies depending on the nature of the gene.
Components:	The ORF clone is ion-exchange column purified and shipped in a 2D barcoded Matrix tube containing 10ug of transfection-ready, dried plasmid DNA (reconstitute with 100 ul of water).
Reconstitution Method:	<ol style="list-style-type: none"> 1. Centrifuge at 5,000xg for 5min. 2. Carefully open the tube and add 100ul of sterile water to dissolve the DNA. 3. Close the tube and incubate for 10 minutes at room temperature. 4. Briefly vortex the tube and then do a quick spin (less than 5000xg) to concentrate the liquid at the bottom. 5. Store the suspended plasmid at -20°C. The DNA is stable for at least one year from date of shipping when stored at -20°C.
RefSeq:	NM_004621.2
RefSeq Size:	4612 bp
RefSeq ORF:	2796 bp
Locus ID:	7225
UniProt ID:	Q9Y210
Cytogenetics:	11q22.1
Domains:	ANK, ion_trans
Protein Families:	Druggable Genome, Ion Channels: Transient receptor potential, Transmembrane
Gene Summary:	<p>The protein encoded by this gene forms a receptor-activated calcium channel in the cell membrane. The channel is activated by diacylglycerol and is thought to be under the control of a phosphatidylinositol second messenger system. Activation of this channel occurs independently of protein kinase C and is not triggered by low levels of intracellular calcium. Defects in this gene are a cause of focal segmental glomerulosclerosis 2 (FSGS2). [provided by RefSeq, Mar 2009]</p>

Product images:



Circular map for RG210783