

Product datasheet for **RG210750**

galectin 9 (LGALS9) (NM_002308) Human Tagged ORF Clone

Product data:

Product Type:	Expression Plasmids
Product Name:	galectin 9 (LGALS9) (NM_002308) Human Tagged ORF Clone
Tag:	TurboGFP
Symbol:	galectin 9
Synonyms:	HUAT; LGALS9A
Mammalian Cell Selection:	Neomycin
Vector:	pCMV6-AC-GFP (PS100010)
E. coli Selection:	Ampicillin (100 ug/mL)
ORF Nucleotide Sequence:	>RG210750 representing NM_002308 Red=Cloning site Blue=ORF Green=Tags(s)

TTTTGTAATACGACTCACTATAGGGCGGCCGGAATTCGTCGACTGGATCCGGTACCGAGGAGATCTGCC
GCC**CGATCGCC**

ATGGCCTTCAGCGGTTCCAGGCTCCCTACCTGAGTCCAGCTGTCCCCTTTCTGGGACTATTCAAGGAG
GTCTCCAGGACGGACTTCAGATCACTGTCAATGGGACCGTTCTCAGCTCCAGTGGAAACCAGGTTTGCTGT
GAACTTTCAGACTGGCTTCAGTGGAAATGACATTGCCTTCCACTTCAACCCTCGGTTTGAAGATGGAGGG
TACGTGGTGTGCAACACGAGGCAGAACGGAAGCTGGGGGCCGAGGAGAGGAAGACACACATGCCTTCC
AGAAGGGGATGCCCTTTGACCTCTGCTTCTGGTGCAGAGCTCAGATTTCAAGGTGATGGTGAACGGGAT
CCTCTTTCGTGCAGTACTCCACCGCGTGCCTTCCACCGTGTGGACACCATCTCCGTCATGGCTCTGTG
CAGCTGTCTACATCAGCTTCCAGCCTCCCGCGTGTGGCCTGCCAACCCGGCTCCCATTACCCAGACAG
TCATCCACACAGTGCAGAGCGCCCTGGACAGATGTTCTACTCCCGCCATCCCACCTATGATGTACCC
CCACCCCGCCTATCCGATGCCTTTCATCACCACCATTCCTGGGAGGGCTGTACCCATCCAAGTCCATCCTC
CTGTGACGGCACTGTCTGCCAGTGTCTCAGAGGTTCCACATCAACCTGTGCTCTGGGAACCATCGCCT
TCCACCTGAACCCCGTTTTGATGAGAATGCTGTGGTCCGCAACCCAGATCGACAACCTCTGGGGGTC
TGAGGAGCGAAGTCTGCCCGAAAAATGCCCTTCGTCCGTGGCCAGAGCTTCTCAGTGTGGATCTTGTGT
GAAGCTCACTGCCTCAAGGTGGCCGTGGATGGTCAGCACCTGTTTGAATACTACCATCGCCTGAGGAACC
TGCCACCATCAACAGACTGGAAGTGGGGGCGACATCCAGCTGACCCATGTGCAGACA

ACGCGTACGCGGCCGCTCGAG - GFP Tag - GTTTAA



[View online »](#)

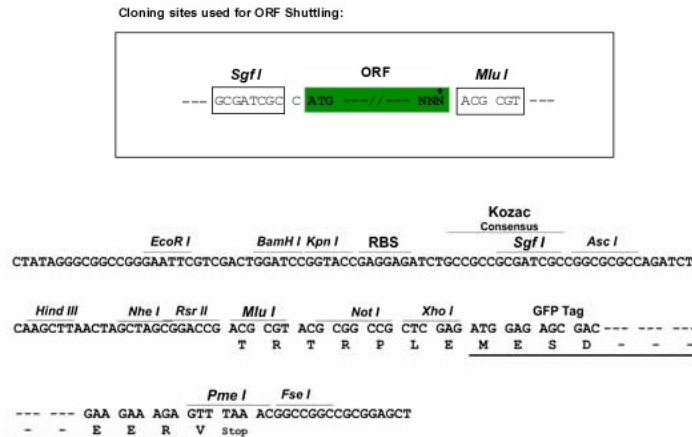
Protein Sequence: >RG210750 representing NM_002308
 Red=Cloning site Green=Tags(s)

MAFSGSQAPYLSPAVPFSGTIQGGLDGLQITVNGTVLSSSGTRFAVNFQTGFSGNDIAFHFNPRFEDGG
 YVVCNTRQNGSWGPEERKTHMPFKGMPPDLCFLVQSSDFKVMVNGILFVQYFHRVPPFHRVDTISVNGSV
 QLSYISFQPPGVWPANPAPITQTVIHTVQSAPGQMFSTPAIPPMYPHPAYPMPFITITLGGLYPSKSIL
 LSGTVLPSAQRFHINLCSGNHIAFHNLNPRFDENAVVRNTQIDNSWGSEERSLPRKMPFVRGQSFVWILC
 EAHCLKVAVDGQHLFEYYHRLRNLPINRLEVGGDIQLTHVQT

TRTRPLE - GFP Tag - V

Restriction Sites: SgfI-MluI

Cloning Scheme:



ACCN: NM_002308

ORF Size: 969 bp

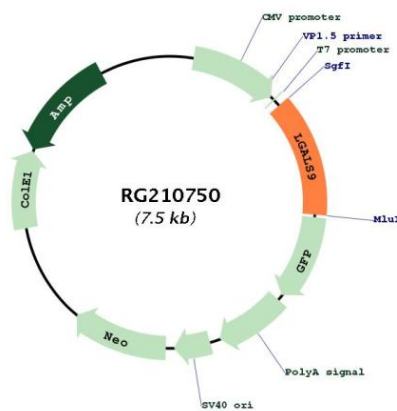
OTI Disclaimer: Due to the inherent nature of this plasmid, standard methods to replicate additional amounts of DNA in E. coli are highly likely to result in mutations and/or rearrangements. Therefore, OriGene does not guarantee the capability to replicate this plasmid DNA. Additional amounts of DNA can be purchased from OriGene with batch-specific, full-sequence verification at a reduced cost. Please contact our customer care team at custsupport@origene.com or by calling 301.340.3188 option 3 for pricing and delivery.

The molecular sequence of this clone aligns with the gene accession number as a point of reference only. However, individual transcript sequences of the same gene can differ through naturally occurring variations (e.g. polymorphisms), each with its own valid existence. This clone is substantially in agreement with the reference, but a complete review of all prevailing variants is recommended prior to use. [More info](#)

OTI Annotation: This clone was engineered to express the complete ORF with an expression tag. Expression varies depending on the nature of the gene.

- Components:** The ORF clone is ion-exchange column purified and shipped in a 2D barcoded Matrix tube containing 10ug of transfection-ready, dried plasmid DNA (reconstitute with 100 ul of water).
- Reconstitution Method:**
1. Centrifuge at 5,000xg for 5min.
 2. Carefully open the tube and add 100ul of sterile water to dissolve the DNA.
 3. Close the tube and incubate for 10 minutes at room temperature.
 4. Briefly vortex the tube and then do a quick spin (less than 5000xg) to concentrate the liquid at the bottom.
 5. Store the suspended plasmid at -20°C. The DNA is stable for at least one year from date of shipping when stored at -20°C.
- RefSeq:** [NM_002308.4](#)
- RefSeq Size:** 1739 bp
- RefSeq ORF:** 972 bp
- Locus ID:** 3965
- UniProt ID:** [O00182](#)
- Cytogenetics:** 17q11.2
- Domains:** Gal-bind_lectin
- Gene Summary:** The galectins are a family of beta-galactoside-binding proteins implicated in modulating cell-cell and cell-matrix interactions. The protein encoded by this gene is an S-type lectin. It is overexpressed in Hodgkin's disease tissue and might participate in the interaction between the H&RS cells with their surrounding cells and might thus play a role in the pathogenesis of this disease and/or its associated immunodeficiency. Multiple alternatively spliced transcript variants have been found for this gene. [provided by RefSeq, Jul 2008]

Product images:



Circular map for RG210750