

Product datasheet for **RG210497**

TLR3 (NM_003265) Human Tagged ORF Clone

Product data:

Product Type:	Expression Plasmids
Product Name:	TLR3 (NM_003265) Human Tagged ORF Clone
Tag:	TurboGFP
Symbol:	TLR3
Synonyms:	CD283; IIAE2
Mammalian Cell Selection:	Neomycin
Vector:	pCMV6-AC-GFP (PS100010)
E. coli Selection:	Ampicillin (100 ug/mL)



[View online »](#)

ORF Nucleotide Sequence:

>RG210497 representing NM_003265
 Red=Cloning site Blue=ORF Green=Tags(s)

TTTTGTAATACGACTCACTATAGGGCGGCCGGGAATTCGTCGACTGGATCCGGTACCGAGGAGATCTGCC
 GCC**CGCATCGCC**

ATGAGACAGACTTTGCCCTTGATCTACTTTGGGGGGCCCTTTGCCCTTTGGGATGCTGTGTGCATCCT
 CCACCACCAAGTGCCTGTTAGCCATGAAGTTGCTGACTGCAGCCACCTGAAGTTGACTCAGGTACCCGA
 TGATCTACCCACAAACATAACAGTGTGAACCTTACCCATAATCAACTCAGAAGATTACCAGCCGCAAC
 TTCACAAGGTATAGCCAGCTAAGTGGATGTAGGATTTAACACCATCTCAAACTGGAGCCAGAAT
 TGTGCCAGAACTCCCATGTTAAAAGTTTGAACCTCCAGCACAATGAGCTATCTCAACTTTCTGATAA
 AACCTTTGCCCTTGCACGAATTTGACTGAACTCCATCTCATGTCCAACCTCAATCCAGAAAATAAAAAT
 AATCCCTTTGTCAAGCAGAAGAATTTAATCACATTAGATCTGTCTCATAATGGCTTGTCTACAAAAT
 TAGGAACTCAGGTTGAGTGGAAAATCTCCAAGAGCTTCTATTATCAAACAATAAAATTCAGCGCTAAA
 AAGTGAAGAACTGGATATCTTTGCCAATTCATCTTTAAAAAATTAGAGTTGTCATCGAATCAAATTA
 GAGTTTTCTCCAGGGTGTTCACGCAATTGGAAGATTATTTGGCCTCTTCTGAAACAATGCCAGCTGG
 GTCCCAGCCTTACAGAGAAGCTATGTTTGAATTAGCAAACACAAGCATTGCGAATCTGTCTCTGAGTAA
 CAGCCAGCTGTCCACCACCAGCAATACAACCTTTCTGGGACTAAAGTGGACAAAATCTCACTATGCTCGAT
 CTTTCTACAACAACCTAAATGTGGTGGTAACGATTCTTTGCTGGCTTCCACAACCTAGAAATTTTCT
 TCCTAGAGTATAATAATACAGCATTGTTTTCTCACTTTGACAGGGCTTTTCAATGTGAGGTACCT
 GAATTTGAAACGGTCTTTACTAAACAAAGTATTTCCCTTGCCCTCACTCCCAAGATTGATGATTTTCT
 TTTCACTGGCTAAAATGTTTGGAGCACCTTAACATGGAAGATAATGATATCCAGGCATAAAAAGCAATA
 TGTTACAGGATTGATAAACCTGAAATCTTAAGTCTATCCAACCTCTTACAAGTTTGCAGAAATTTGAC
 AAATGAAACATTTGTATCACTTGCTCATTCTCCCTTACACATACTCAACCTAACCAAGAATAAAATCTCA
 AAAATAGAGAGTGATGCTTTCTTGGTTGGGCCACCTAGAAGTACTTGACCTGGGCCTTAAATGAAATTG
 GGCAAGAACTCACAGGCCAGGAATGGAGAGGTCTAGAAAATATTTTCAAATCTATCTTTCTACAACAA
 GTACCTGCAGCTGACTAGGAACTCCTTTGCCTGGTCCCAAGCCTTCAACGACTGATGCTCCGAAGGGTG
 GCCCTTAAAAATGTGGATAGCTCTCCTTACCATTCCAGCCTCTCGTAACTTGACCATTCTGGATCTAA
 GCAACAACAACATAGCCAACATAAATGATGACATGTTGGAGGGTCTTGAGAACTAGAAATTTCTCGATT
 GCAGCATAACAACCTAGCACGGCTCTGAAACACGAAACCCTGGTGGTCCCATTATTTCTAAAGGGT
 CTGTCTCACTCCACATCTTAACCTGGAGTCCAACGGCTTTGACGAGATCCCAGTTGAGGTCTTCAAGG
 ATTTATTTGAACTAAAGATCATCGATTTAGGATTGAATAATTTAAACACACTTCCAGCATCTGTCTTAA
 TAATCAGGTGCTCTAAAGTCATTGAACCTTCAAGAAGATCTCATAACATCCGTTGAGAAGAAGTTTTTC
 GGGCCAGCTTTAGGAACCTGACTGAGTTAGATATGCGCTTAAATCCCTTTGATTGCACGTGTGAAAGTA
 TTGCTGGTTTGTAAATGGATTAACGAGACCCATACCAACATCCCTGAGCTGTCAAGCCACTACCTTTG
 CAACACTCCACCTCACTATCATGGGTTCCAGTGAGACTTTTTGATACATCATCTTGAAAGACAGTGCC
 CCCTTTGAACTCTTTTCATGATCAATACCAGTATCCTGTTGATTTTTATCTTTATTGACTTCTCATCC
 ACTTTGAGGGCTGGAGGATATCTTTTTATTGGAATGTTTCAGTACATCGAGTTCTTGGTTTCAAAGAAAT
 AGACAGACAGACAGAACAGTTTGAATATGCAGCATATATAATTCATGCCTATAAAGATAAGGATTGGGTC
 TGGGAACATTTCTTCAATGGAAAAGGAAGACCAATCTCTCAAATTTTGTCTGGAAGAAGGGACTTTG
 AGCGGGTGTTTTTGAACTAGAAGCAATTGTTAACAGCATCAAAAAGAAGCAGAAAATATTTTTGTTAT
 AACACACCATCTATTAAGACCCATTATGCAAAAAGATTCAAGGTACATCATGCAGTTCAACAAGCTATT
 GAACAAAATCTGGATTCCATTATATTGGTTTTCTTGAGGAGATTCCAGATTATAAACTGAACCATGCAC
 TCTGTTTGCAGAGGAATGTTTAAATCTCACTGCATCTTGAAGTGGCCAGTTGAGAAAGACGGATAGG
 TGCTTTCTGCATAAATTGCAAGTAGCACTTGGATCCAAAACCTGTACAT

ACGCGTACGCGGCCGCTCGAG - GFP Tag - GTTTAA

Protein Sequence: >RG210497 representing NM_003265
 Red=Cloning site Green=Tags(s)

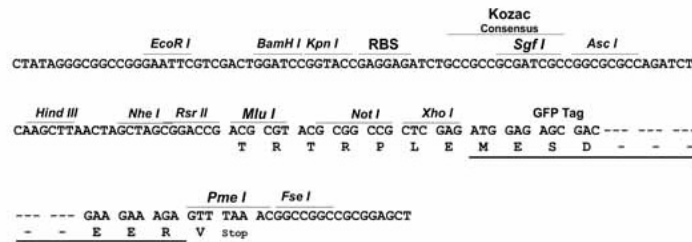
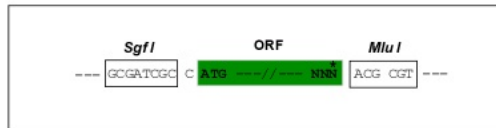
MRQTLPCIYFWGGLLPFGMLCASSTTKCTVSHEVADCSHLKLTQVPDDLPTNITVLNLTHNQLRRLPAAN
 FTRYSQLTSLDVGFNITISKLEPELCQKLPMLKVLNLQHNELSQLSDKTFACFNTLTELHLSMSNIQKIKN
 NPFVKQKNLITLDSLHNGLSSTKLGTVQLENLQELLLSNNKIQALKSEELDIFANSSLKLELSSNQIK
 EFSPGCFHAIGRLFGLFLNNVQLGPSLTEKLCLELANTSIRNLSLSNSQLSTTSNTTFLGLKWTNLTMLD
 LSYNNLNVVGNDSFAWLPQLEYFFLEYNNIQHLFSHSLHGLFNVRYLNLKRSFTKQISLASLPAKIDDFS
 FQWLKCLEHLNMEMDNDIPGIKSNMFTGLINLKYLSSLNSFTSLRTLNETFVSLAHSPLHILNLTKNKIS
 KIESDAFSWLGHLEVLDLGLNEIGQELTGQEWRLGLENIFEIYLSYNKYQLTRNSFALVPSLQRLMLRRV
 ALKNVDSSPSPFQPLRNLITLDSLNNNIANINDDMLEGLEKLEILDQLHNNLARLWKHANPGPIYFLKG
 LSHLHILNLESNGFDEIPVEVFKDLFELKIIDLGLNNTLPASVFNNQVSLKSLNLQKNLITSVEKKVF
 GPAFRNLTELMRFNPFDCETCSIAWFVNWINETHNIPELSSHLCNTPPHYHGFPVRLFDTSSCKDSA
 PFELFFMINTSILLIFIFIVLLIHFEGRISFYWNVSVHRVLFKFEIDRQTEQFEYAAYIIHAYKDKDWV
 WEHFSMEKEDQSLKFCLEERDFEAGVFELEAIVNSIKRSRKIIFVITHLLKDPCKRFKVVHVAVQQAIE
 EQNLDSIILVLEEIPDYKLNHALCLRRGMFKSHCILNWPVQKERIGAFRHKLQVALGSKNSVH

TRTRPLE - GFP Tag - V

Restriction Sites: SgfI-MluI

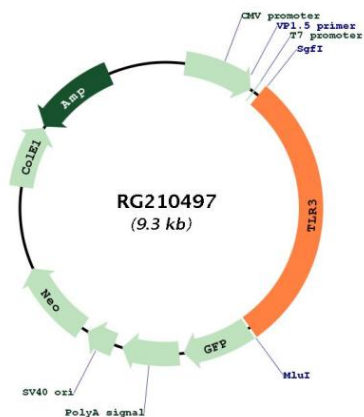
Cloning Scheme:

Cloning sites used for ORF Shuttling:



ACCN:	NM_003265
ORF Size:	2712 bp
OTI Disclaimer:	The molecular sequence of this clone aligns with the gene accession number as a point of reference only. However, individual transcript sequences of the same gene can differ through naturally occurring variations (e.g. polymorphisms), each with its own valid existence. This clone is substantially in agreement with the reference, but a complete review of all prevailing variants is recommended prior to use. More info
OTI Annotation:	This clone was engineered to express the complete ORF with an expression tag. Expression varies depending on the nature of the gene.
Components:	The ORF clone is ion-exchange column purified and shipped in a 2D barcoded Matrix tube containing 10ug of transfection-ready, dried plasmid DNA (reconstitute with 100 ul of water).
Reconstitution Method:	<ol style="list-style-type: none">1. Centrifuge at 5,000xg for 5min.2. Carefully open the tube and add 100ul of sterile water to dissolve the DNA.3. Close the tube and incubate for 10 minutes at room temperature.4. Briefly vortex the tube and then do a quick spin (less than 5000xg) to concentrate the liquid at the bottom.5. Store the suspended plasmid at -20°C. The DNA is stable for at least one year from date of shipping when stored at -20°C.
RefSeq:	NM_003265.3
RefSeq Size:	3057 bp
RefSeq ORF:	2715 bp
Locus ID:	7098
UniProt ID:	O15455
Cytogenetics:	4q35.1
Domains:	TIR, LRRCT, LRR, LRR_TYP, LRR_PS
Protein Families:	Druggable Genome, Transmembrane
Protein Pathways:	Toll-like receptor signaling pathway
Gene Summary:	The protein encoded by this gene is a member of the Toll-like receptor (TLR) family which plays a fundamental role in pathogen recognition and activation of innate immunity. TLRs are highly conserved from Drosophila to humans and share structural and functional similarities. They recognize pathogen-associated molecular patterns (PAMPs) that are expressed on infectious agents, and mediate the production of cytokines necessary for the development of effective immunity. The various TLRs exhibit different patterns of expression. This receptor is most abundantly expressed in placenta and pancreas, and is restricted to the dendritic subpopulation of the leukocytes. It recognizes dsRNA associated with viral infection, and induces the activation of NF-kappaB and the production of type I interferons. It may thus play a role in host defense against viruses. Use of alternative polyadenylation sites to generate different length transcripts has been noted for this gene. [provided by RefSeq, Jul 2008]

Product images:



Circular map for RG210497