

Product datasheet for **RG210115**

IFNA21 (NM_002175) Human Tagged ORF Clone

Product data:

Product Type: Expression Plasmids
Product Name: IFNA21 (NM_002175) Human Tagged ORF Clone
Tag: TurboGFP
Symbol: IFNA21
Synonyms: IFN-alpha1; IeIF-F; IeIF F
Mammalian Cell Selection: Neomycin
Vector: pCMV6-AC-GFP (PS100010)
E. coli Selection: Ampicillin (100 ug/mL)
ORF Nucleotide Sequence: >RG210115 representing NM_002175
Red=Cloning site Blue=ORF Green=Tags(s)

TTTTGTAATACGACTCACTATAGGGCGGCCGGAATTCGTCGACTGGATCCGGTACCGAGGAGATCTGCC
GCC**CGATCGCC**

ATGGCCCTGTCTTTTCTTTACTGATGGCCGTGCTGGTGCTCAGCTACAAATCCATCTGTTCTCTGGGCT
GTGATCTGCCTCAGACCCACAGCCTGGTAATAGGAGGGCCTTGATACTCCTGGCACAATGGGAAGAAT
CTCTCCTTTCTCCTGCCTGAAGGACAGACATGACTTTGGATTCCCCAGGAGGATTTGATGGCAACCAG
TTCCAGAAGGCTCAAGCCATCTCTGTCTCCATGAGATGATCCAGCAGACCTTCAATCTCTCAGCACAA
AGGACTCATCTGCTACTTGGGAACAGAGCCTCCTAGAAAAATTTCCACTGAACCTAACCAGCAGCTGAA
TGACCTGGAAGCCTGCGTGATACAGGAGTTGGGGTGGAAAGAGACTCCCTGATGAATGTGGACTCCATC
CTGGCTGTGAAGAAATACTTCCAAGAATCACTCTTTATCTGACAGAGAAGAAATACAGCCCTTGTGCCT
GGGAGGTTGTGAGAGCAGAAATCATGAGATCCTTCTTTATCAAAAATTTTCAAGAAAGATTAAGGAG
GAAGGAA

ACGCGTACGCGGCCGCTCGAG - GFP Tag - GTTTAA

Protein Sequence: >RG210115 representing NM_002175
Red=Cloning site Green=Tags(s)

MALSFSLLMAVLVLSYKSI CSLGCDLPQTHSLGNRRALILLAQMGRISPFSCLKDRHDFGFPQEEFDGNQ
FQKAQAISVLHEMIQQTFNLFSTKDSSATWEQSLLEKFSSTELNQQLNLEACVIQEVGVEETPLMNVDSI
LAVKKYQRITLYLTKKYSPCAWEVVRAEIMRSFSLSKIFQERLRRKE

TRTRPLE - GFP Tag - V

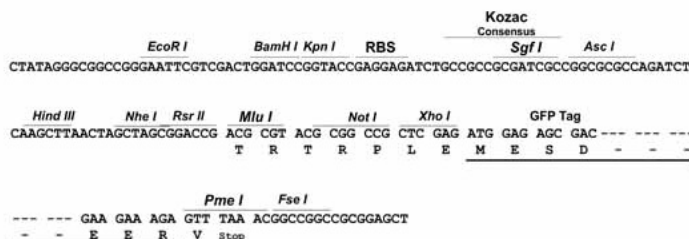
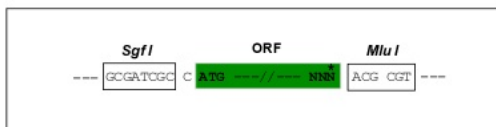
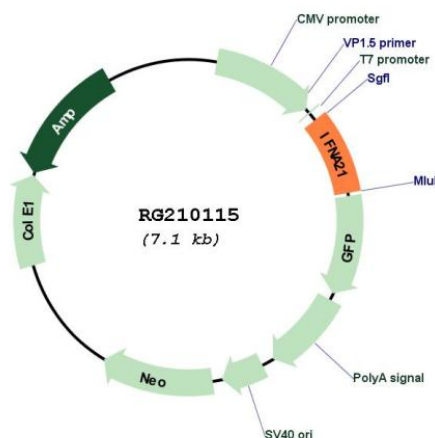
Restriction Sites: SgfI-MluI



[View online »](#)

Cloning Scheme:

Cloning sites used for ORF Shutting:


Plasmid Map:


- ACCN:** NM_002175
- ORF Size:** 567 bp
- OTI Disclaimer:** The molecular sequence of this clone aligns with the gene accession number as a point of reference only. However, individual transcript sequences of the same gene can differ through naturally occurring variations (e.g. polymorphisms), each with its own valid existence. This clone is substantially in agreement with the reference, but a complete review of all prevailing variants is recommended prior to use. [More info](#)
- OTI Annotation:** This clone was engineered to express the complete ORF with an expression tag. Expression varies depending on the nature of the gene.
- Components:** The ORF clone is ion-exchange column purified and shipped in a 2D barcoded Matrix tube containing 10ug of transfection-ready, dried plasmid DNA (reconstitute with 100 ul of water).

Reconstitution Method:

1. Centrifuge at 5,000xg for 5min.
2. Carefully open the tube and add 100ul of sterile water to dissolve the DNA.
3. Close the tube and incubate for 10 minutes at room temperature.
4. Briefly vortex the tube and then do a quick spin (less than 5000xg) to concentrate the liquid at the bottom.
5. Store the suspended plasmid at -20°C. The DNA is stable for at least one year from date of shipping when stored at -20°C.

RefSeq: [NM_002175.2](#), [NP_002166.2](#)

RefSeq Size: 985 bp

RefSeq ORF: 570 bp

Locus ID: 3452

UniProt ID: [P01568](#)

Cytogenetics: 9p21.3

Protein Families: Druggable Genome, Secreted Protein

Protein Pathways: Antigen processing and presentation, Autoimmune thyroid disease, Cytokine-cytokine receptor interaction, Cytosolic DNA-sensing pathway, Jak-STAT signaling pathway, Natural killer cell mediated cytotoxicity, Regulation of autophagy, RIG-I-like receptor signaling pathway, Toll-like receptor signaling pathway

Gene Summary: This gene is a member of the alpha interferon gene cluster on the short arm of chromosome 9. Interferons are cytokines produced in response to viral infection that mediate the immune response and interfere with viral replication. The encoded protein is a type I interferon and may play a specific role in the antiviral response to rubella virus. [provided by RefSeq, Sep 2011]