

Product datasheet for **RG209476**

Collagen VI (COL6A2) (NM_001849) Human Tagged ORF Clone

Product data:

Product Type:	Expression Plasmids
Product Name:	Collagen VI (COL6A2) (NM_001849) Human Tagged ORF Clone
Tag:	TurboGFP
Symbol:	COL6A2
Synonyms:	BTHLM1; PP3610; UCMD1
Mammalian Cell Selection:	Neomycin
Vector:	pCMV6-AC-GFP (PS100010)
E. coli Selection:	Ampicillin (100 ug/mL)
ORF Nucleotide Sequence:	>RG209476 representing NM_001849 Red=Cloning site Blue=ORF Green=Tags(s)

TTTTGTAATACGACTCACTATAGGGCGGCCGGAATTCGTCGACTGGATCCGGTACCGAGGAGATCTGCC
GCC**CGATCGCC**

ATGCTCCAGGGCACCTGCTCCGTGCTCCTGCTCTGGGAATCCTGGGGCCATCCAGGCCAGCAGCAGG
AGGTCATCTCGCCGACACTACCGAGAGAAACAACAACCTGCCAGAGAAGACCGACTGCCCATCCACGT
GTACTTCGTGCTGGACACCTCGGAGAGCGTCACCATGCAGTCCCCACGGACATCCTGCTTCCACATG
AAGCAGTTCGTGCCGAGTTCATCAGCCAGCTGCAGAACGAGTTCACCTGGACCAGGTGGCGCTGAGCT
GGCGCTACGGCGCCTGCACTTCTGACCAGGTGGAGGTGTTACGCCACCGGGCAGCGACCGGGCCTC
TTTCATCAAGAACCTGCAGGGCATCAGCTCCTTCCGCCGCGGCACCTTACCGACTGCGCGCTGGCCAAC
ATGACGGAGCAGATCCGGCAGGACCGCAGCAAGGGCACCGTCCACTTCGCCGTGGTCATACCGACGGCC
ACGTACCCGGCAGCCCCGCGGGGGCATCAAGTGCAGGCCGAGCGGGCCCGCAGGAGGGCATCCGGCT
CTTCGCCGTGGCCCCAACCAGAACCTGAAGGAGCAGGGCCTGCGGGACATCGCCAGCACGCCGACAGG
CTCTACCGCAACGACTACGCCACCATGCTGCCGACTCCACCGAGATCGACCAGGACACCATCAACCGCA
TCATCAAGGTATGAAACACGAAGCCTACGGAGAGTGTACAAGGTGAGCTGCCTGGAAATCCCTGGGCC
CTCTGGCCCCAAGGGCTACCGTGGACAGAAGGGTGCCAAGGGCAACATGGGTGAGCCGGGAGAGCCTGGC
CAGAAGGGAAGACAGGGAGACCCGGGCATCGAAGGCCCATTTGGATTCAGGACCAAGGGCGTTCTCTG
GCTTCAAAGGAGAGAAGGGTGAATTTGGAGCCGACGGTTCGCAAGGGGGCCCTGGCCTGGCTGGCAAGAA
CGGGACCGATGGACAGAAGGGCAAGCTGGGGCGCATCGGACCTCCTGGCTGCAAGGGAGACCCTGGAAAC
CGGGGCCCGACGGTTACCCGGGGGAAGCAGGGAGTCCAGGGGAGCGAGGAGACCAAGGCGCAAGGGGG
ACCCTGGCCGCCAGGACGCAGAGGGCCCCGGGAGAAATCGGGGCAAGGGAAGCAAGGGGTATCAAGG
CAACAATGGAGCCCCAGGAAGTCTGGTGTGAAAGGAGCAAGGGCGGGCCTGGGCCCGCGACCCAAA
GGCGAGCCGGGGCGCAGGGGAGACCCGGCACCAAGGGCAGCCAGCGATGGCCCCAAGGGGGAGA
AGGGGACCTGGCCTGAGGGGCCCGGCCCTGGCTGGAGAGGTTGGCAACAAAGGAGCAAGGGAGA
CCGAGGCTGCCTGGACCAGAGGCCCCAGGGAGCTCTGGGGAGCCGAAAGCAGGGATCTCGGGGA



[View online »](#)

GACCCCGGTGATGCAGGACCCCGTGGAGACTCAGGACAGCCAGGCCCAAGGGAGACCCCGGCAGGCCTG
 GATTACAGTACCCAGGACCCCGAGGAGCACCCGGAGAAAAAGGCGAGCCCGGCCACGCGGCCCGAGGG
 AGGCCGAGGCGACTTTGGCTTGAAGGAGAACCTGGGAGGAAAGGAGAGAAAGGAGAGCCTGCGGATCCT
 GGTCCCCCTGGTGGCCAGGCCCTCGGGGGCAAGAGGAGTCCCAGGACCCGAGGGTGGCCCGGCCCC
 CTGGAGACCCCGTCTCACGGAGTGTGACGTATGACCTACGTGAGGGAGACCTGCGGGTGTGCGACTG
 TGAGAAGCGCTGTGGCGCCCTGGACGTGGTCTTCGTATCGACAGCTCCGAGAGCATTGGGTACACCAAC
 TTCACACTGGAGAAGAACTTCGTATCAACGTGGTCAACAGGCTGGGTGCCATCGCTAAGGACCCCAAGT
 CCGAGACAGGGACGCGTGTGGCGTGGTGCAGTACAGCCACGAGGGCACCTTTGAGGCCATCCAGCTGGA
 CGACGAACGTATCGACTCCCTGTGAGCTTCAAGGAGGCTGTCAAGAACCTCGAGTGGATTGCGGGCGGC
 ACCTGGACACCCTCAGCCCTCAAGTTTGGCTACGACCCGCTCATCAAGGAGAGCCGGCGCCAGAAGACAC
 GTGTGTTTGGGTGGTATCACGGACGGGCGCCACGACCCTCGGGACGATGACCTCAACTTGGGGCGCT
 GTGCGACCCGACGTACAGTACGCGCCATCGGCATCGGGACATGTTCCACGAGAAGCAGAGAGTGAA
 AACCTTACTCCATCGCCTGCGACAAGCCACAGCAGGTGCGCAACATGACGCTGTTCTCCGACCTGGTGC
 CTGAGAAGTTCATCGATGACATGGAGGACGTCCTCTGCCCGACCCTCAGATCGTGTGCCAGACCTTCC
 CTGCCAAACAGAGCTGTCCGTGGCACAGTGCACGACGCGCCCGTGGACATCGTCTTCTGCTGGACGGC
 TCCGAGCGGCTGGGTGAGCAGAACTTCCACAAGGCCCGCGCTTCTGTGGAGCAGGTGGCGCGCGGCTGA
 CGCTGGCCCGGAGGGACGACGACCTCTCAACGCACGCGTGGCGCTGCTGCAATTTGGTGGCCCCGGCGA
 GCAGCAGGTGGCCTTCCCGCTGAGCCACAACCTCACGGCCATCCACGAGGCGCTGGAGACCACGCAATAC
 CTGAACTCCTTCTCGCACGTGGGCGCAGGCGTGGTGCACGCCATCAATGCCATCGTGCAGCCCGCGTG
 GCGGGGCCCGGAGGCACGAGAGCTGTCCTTCTGTGTTCTCACGGACGGCGTACGGGCAACGACAGTCT
 GCACGAGTCCGCGCACTCCATGCGCAAGCAGAAGTGGTACCCACCGTGTGGCCTTGGGCGAGCAGTGC
 GACATGGACGTGCTCACCACGCTCAGCCTGGGTGACCGTCCCGCGTGTCCACGAGAAGGACTATGACA
 GCCTGGCGCAACCCGGCTTCTTCGACCGCTTATCCGCTGGATCTGC

AGCGGACCGACGCGTACGCGGCCGCTCGAG - GFP Tag - GTTTAA

Protein Sequence:

>RG209476 representing NM_001849
 Red=Cloning site Green=Tags(s)

MLQGTCSVLLWGLGAIQAQQQEVISPDTTERRNNNCPKTDPCIHVYFVLDTSSEVMTQSPDILLFHM
 KQFVPOFISQLQNEFYLDQVALSWRYGGLHFSDQVEVFSPPGSDRASFIKNLQGISSFRRTFTDCALAN
 MTEQIRQDRSKGTVHFVAVITDGHVTGSPCGGIKLQAERAREEGIRLFAVAPNQNLKEQGLRDIASPHE
 LYRNDYATMLPDSTEIDQDTINRIKVMKHEAYGECYKVSCLIPGSPGPKGYRGQKGAAGNMGEPGEPG
 QKGRQGDPIEGPIGFPGPKGVPGFKGEKGEFGADGRKGAPLAGKNGTDGQKGLGRIGPPGCKGDPGN
 RGPDPGYPGEAGSPGERGDQGGKDPGRPRRRGPPGEIGAKGSKGYQGNNGAPGSPGVKAGGGPGRGPK
 GEPGRRGDPGKSPGSDGPKGEKGDGPEGPRGLAGEVGNKGAKGDRGLPGRGPQALGEPGKQGSRG
 DPGDAGPRGDSGQPGKDPGRPGFSYPGPRGAPGEKGEPRGPEGGRGDFGLKGEPRGKGEKGEPADP
 GPPGEPGRGPRGVPGEPEGPPGDPGLTECDVMTYVRETCGCCDCEKRCGALDVVVIDSSESIGYTN
 FTLEKNFVINVNRLGAIKDPKSETGTRVGVVQYSHEGTFEAIQLDDERIDSLSSFKEAVKNLEWIAGG
 TWTPSALKFAYDRLIKESRRQKTRVFAVITDGRHDPRDDLNLRALCDRDVTVTAIGIGDMFHEKHESE
 NLYSIACDKPQQVRNMTLFSDLVAEKFIIDMEDVLCPPDQIVCPDLPCQTELSVAQCTQRPVDIVFLLDG
 SERLGEQNFHKARRFVEQVARRLTLARRDDPLNARVALLQFGGPGEQQVAFPLSHNLTAIHEALETQY
 LNSFSHVGAGVVHAINAIVRSPRGGARRHAELSFVFLTDGVTGNDSLHESAHSRMRQNVVPTVLALGSDV
 DMDVLTTLSLGDRAAVFHEKDYDSLALQPGFFDRFIRWIC

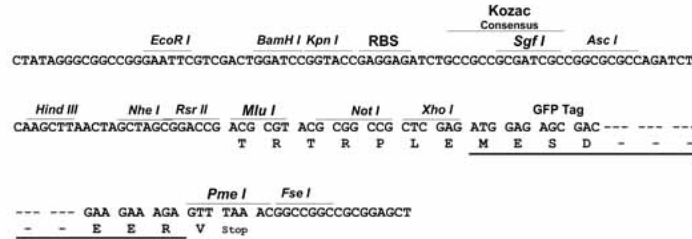
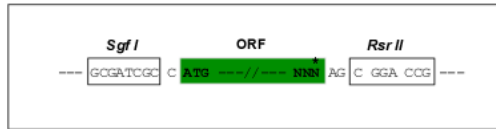
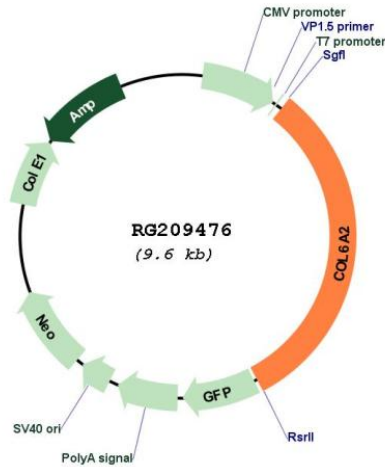
SGPTRRRLE - GFP Tag - V

Restriction Sites:

Sgfl-RsrII

Cloning Scheme:

Cloning sites used for ORF Shuttling:


Plasmid Map:

ACCN: NM_001849

ORF Size: 3057 bp

OTI Disclaimer: The molecular sequence of this clone aligns with the gene accession number as a point of reference only. However, individual transcript sequences of the same gene can differ through naturally occurring variations (e.g. polymorphisms), each with its own valid existence. This clone is substantially in agreement with the reference, but a complete review of all prevailing variants is recommended prior to use. [More info](#)

OTI Annotation:	This clone was engineered to express the complete ORF with an expression tag. Expression varies depending on the nature of the gene.
Components:	The ORF clone is ion-exchange column purified and shipped in a 2D barcoded Matrix tube containing 10ug of transfection-ready, dried plasmid DNA (reconstitute with 100 ul of water).
Reconstitution Method:	<ol style="list-style-type: none">1. Centrifuge at 5,000xg for 5min.2. Carefully open the tube and add 100ul of sterile water to dissolve the DNA.3. Close the tube and incubate for 10 minutes at room temperature.4. Briefly vortex the tube and then do a quick spin (less than 5000xg) to concentrate the liquid at the bottom.5. Store the suspended plasmid at -20°C. The DNA is stable for at least one year from date of shipping when stored at -20°C.
RefSeq:	NM_001849.3 , NP_001840.3
RefSeq Size:	3455 bp
RefSeq ORF:	3060 bp
Locus ID:	1292
UniProt ID:	P12110
Cytogenetics:	21q22.3
Protein Families:	Secreted Protein
Protein Pathways:	ECM-receptor interaction, Focal adhesion
Gene Summary:	This gene encodes one of the three alpha chains of type VI collagen, a beaded filament collagen found in most connective tissues. The product of this gene contains several domains similar to von Willebrand Factor type A domains. These domains have been shown to bind extracellular matrix proteins, an interaction that explains the importance of this collagen in organizing matrix components. Mutations in this gene are associated with Bethlem myopathy and Ullrich scleroatonic muscular dystrophy. Three transcript variants have been identified for this gene. [provided by RefSeq, Jul 2008]