

Product datasheet for **RG208110**

TRAF2 (NM_021138) Human Tagged ORF Clone

Product data:

| | |
|---------------------------|--|
| Product Type: | Expression Plasmids |
| Product Name: | TRAF2 (NM_021138) Human Tagged ORF Clone |
| Tag: | TurboGFP |
| Symbol: | TRAF2 |
| Synonyms: | MGC:45012; RNF117; TRAP; TRAP3 |
| Mammalian Cell Selection: | Neomycin |
| Vector: | pCMV6-AC-GFP (PS100010) |
| E. coli Selection: | Ampicillin (100 ug/mL) |



[View online »](#)

ORF Nucleotide Sequence:

>RG208110 representing NM_021138
 Red=Cloning site Blue=ORF Green=Tags(s)

TTTTGTAATACGACTCACTATAGGGCGGCCGGAATTCGTCGACTGGATCCGGTACCGAGGAGATCTGCC
 GCC**CGGATCGCC**

ATGGCTGCAGCTAGCGTGACCCCCCTGGCTCCCTGGAGTTGCTACAGCCCGGCTTCTCCAAGACCTCC
 TGGGGACCAAGCTGGAAGCCAAGTACCTGTGCTCCGCCTGCAGAAACGTCCTCCGAGGCCCTTCCAGGC
 GCAGTGTGGCCACCGGTACTGCTCCTTCTGCCTGGCCAGCATCCTCAGCTCTGGGCTCAGAACTGTGCT
 GCCTGTGTTACAGAGGCATATATGAAGAAGGCATTTCTATTTTAGAAAGCAGTTCGGCCTTCCAGATA
 ATGCTGCCCGCAGGGAGGTGGAGAGCCTGCCGGCCGTCTGTCCCAGTGATGGATGCACCTGGAAGGGGAC
 CCTGAAAGAATACGAGAGCTGCCACGAAGGCCGCTGCCCGCTCATGCTGACCGAATGTCCCGCTGCAAA
 GGCCTGGTCCGCCTTGGTAAAAGGAGCGCCACCTGGAGCAGAGTGCCCGGAGAGAAGCCTGAGCTGCC
 GGCATTGCCGGGACCCCTGCTGCGGAGCAGACGTGAAGGGCACCCAGAGTCTGCCCAAGTCCCTT
 AACTTGTGACGGCTGCGCAAGAAGAAGATCCCCGGGAGAAGTTTCAGGACCACGTCAAGACTTGTGGC
 AAGTGTGAGTCCCTTGCAAGTCCACGCCATCGGCTGCCTCGAGACGGTAGAGGGTGAGAAACAGCAGG
 AGCACGAGGTGCAGTGGCTGCGGGAGCACCTGGCCATGCTACTGAGTCCGGTGTGGAGGCAAAGCCCT
 CTTGGGAGACCAGAGCCACGCGGGGTGAGAGTCTGCAGAGGTGCGAGAGCCTGGAGAAGAAGACGGCC
 ACTTTTGAGAACATTGTCTGCGTCTGAACCGGGAGGTGGAGAGGGTGGCCATGACTGCCGAGGCCGTGA
 GCCGGCAGCACCGGCTGGACCAAGACAAGATTGAAGCCCTGAGTAGCAAGGTGCAGCAGCTGGAGAGGAG
 CATTGGCCTCAAGGACCTGGCGATGGCTGACTTGGAGCAGAAGTCTTGGAGATGGAGGCATCCACCTAC
 GATGGGCTCTTCACTGGAAGATCTCAGACTTCGCCAGGAAGCCAGGAAGCTGTGGCTGGCCGCATAC
 CCGCCATCTTCTCCCAGCCTTCTACACCAGCAGGTACGGCTACAAGATGTGTCTGCGTACTACCTGAA
 CGGCGACGGCACCGGGCGAGGAACACACCTGTCCCTCTTCTTTGGTGTGAAGGGCCCGAATGACGCC
 CTGCTGCGGTGGCCCTTCAACCAGAAGGTGACCTTAATGCTGCTCGACCAGAATAACCGGGAGCAGTGTA
 TTGACGCCTTCAAGCCGACGTGACTTCACTCTTTTTCAGAGGCCAGTCAACGACATGAACATCGCAAG
 CGGCTGCCCTCTTCTGCCCTCTCCAAGATGGAGGCAAGAATTCTACGTGCGGGACGATGCCATC
 TTCATCAAGGCCATTGTGGACCTGACAGGGCTC

ACGCGTACGCGGCCGCTCGAG - GFP Tag - GTTTAA

Protein Sequence:

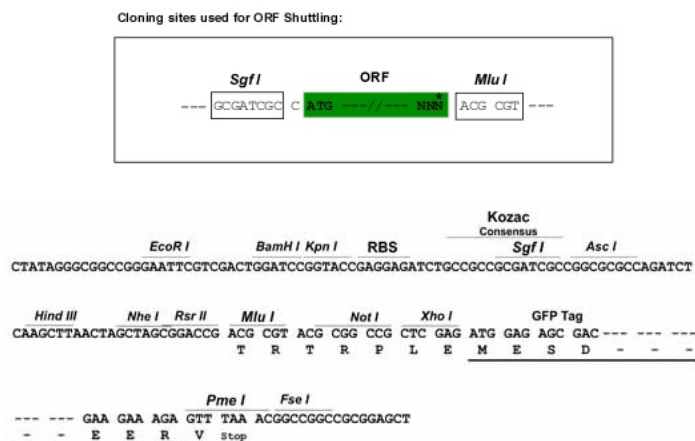
>RG208110 representing NM_021138
 Red=Cloning site Green=Tags(s)

MAAASVTPPGSLELLQPGFSKTLGKLEAKYLCSACRNVLRRPFQAQCGHRYCSFCLASILSSGPQNCA
 ACVHEGIYEEGISILESSAFPDNAARREVESLPAVCPDSDGCTWKGLKEYESCHEGRCPLMLTECPACK
 GLVRLGEKERHLEHECPERSLSRHRAPCCGADVKAHHEVCPKFPLTCDGCGKKKIPREKFQDHVKTG
 KCRVPCRFAHIGLETVEGEKQEHVQWLREHLAMLLSSVLEAKPLLGDQSHAGSELLQRCESELEKTA
 TFENIVCVLNREVERVAMTAEACSRQHRLDQDKIEALSSKVQLERSIGLKDLMADLEQKVLEMEASTY
 DGVFIWKISDFARKRQEA VAGRIPAIIFSPAFYTSRYGYMCLRIYLNQDGTGRGTHLSLFFVVMKGPND
 LLRWPFNQKVTMLLDQNNREHVIDAFRPDVTSSSFQRPVNDMNIASGCPLFCPVSKMEAKNSYVRDDAI
 FIKAIVDLTGL

TRTRPLE - GFP Tag - V

Restriction Sites:

Sgfl-Mlul

Cloning Scheme:


ACCN: NM_021138

ORF Size: 1503 bp

OTI Disclaimer: The molecular sequence of this clone aligns with the gene accession number as a point of reference only. However, individual transcript sequences of the same gene can differ through naturally occurring variations (e.g. polymorphisms), each with its own valid existence. This clone is substantially in agreement with the reference, but a complete review of all prevailing variants is recommended prior to use. [More info](#)

OTI Annotation: This clone was engineered to express the complete ORF with an expression tag. Expression varies depending on the nature of the gene.

Components: The ORF clone is ion-exchange column purified and shipped in a 2D barcoded Matrix tube containing 10ug of transfection-ready, dried plasmid DNA (reconstitute with 100 ul of water).

Reconstitution Method:

1. Centrifuge at 5,000xg for 5min.
2. Carefully open the tube and add 100ul of sterile water to dissolve the DNA.
3. Close the tube and incubate for 10 minutes at room temperature.
4. Briefly vortex the tube and then do a quick spin (less than 5000xg) to concentrate the liquid at the bottom.
5. Store the suspended plasmid at -20°C. The DNA is stable for at least one year from date of shipping when stored at -20°C.

RefSeq: [NM_021138.4](#)

RefSeq Size: 2298 bp

RefSeq ORF: 1506 bp

Locus ID: 7186

UniProt ID: [Q12933](#)

Cytogenetics: 9q34.3

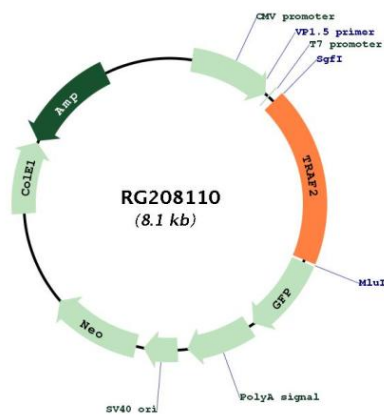
Domains: zf-TRAF, RING, MATH

Protein Families: Druggable Genome

Protein Pathways: Adipocytokine signaling pathway, Apoptosis, MAPK signaling pathway, Pathways in cancer, RIG-I-like receptor signaling pathway, Small cell lung cancer

Gene Summary: The protein encoded by this gene is a member of the TNF receptor associated factor (TRAF) protein family. TRAF proteins associate with, and mediate the signal transduction from members of the TNF receptor superfamily. This protein directly interacts with TNF receptors, and forms a heterodimeric complex with TRAF1. This protein is required for TNF-alpha-mediated activation of MAPK8/JNK and NF-kappaB. The protein complex formed by this protein and TRAF1 interacts with the inhibitor-of-apoptosis proteins (IAPs), and functions as a mediator of the anti-apoptotic signals from TNF receptors. The interaction of this protein with TRADD, a TNF receptor associated apoptotic signal transducer, ensures the recruitment of IAPs for the direct inhibition of caspase activation. BIRC2/c-IAP1, an apoptosis inhibitor possessing ubiquitin ligase activity, can ubiquitinate and induce the degradation of this protein, and thus potentiate TNF-induced apoptosis. Multiple alternatively spliced transcript variants have been found for this gene, but the biological validity of only one transcript has been determined. [provided by RefSeq, Jul 2008]

Product images:



Circular map for RG208110