

Product datasheet for **RG207955**

Neuroigin 3 (NLGN3) (NM_018977) Human Tagged ORF Clone

Product data:

| | |
|---------------------------|--|
| Product Type: | Expression Plasmids |
| Product Name: | Neuroigin 3 (NLGN3) (NM_018977) Human Tagged ORF Clone |
| Tag: | TurboGFP |
| Symbol: | Neuroigin 3 |
| Synonyms: | HNL3 |
| Mammalian Cell Selection: | Neomycin |
| Vector: | pCMV6-AC-GFP (PS100010) |
| E. coli Selection: | Ampicillin (100 ug/mL) |



[View online »](#)

ORF Nucleotide Sequence:

>RG207955 representing NM_018977
 Red=Cloning site Blue=ORF Green=Tags(s)

TTTTGTAATACGACTCACTATAGGGCGGCCGGGAATTCGTCGACTGGATCCGGTACCGAGGAGATCTGCC
 GCC**CGGATCGCC**

ATGTGGCTGCGGCTTGGCCCGCCTCGTGTCCCTGAGCCCCAAGCCACGGTTGGCAGGAGCCTGTGCC
 TCACCCTGTGGTTCTCAGTTTGGCGCTGAGGGCCAGTACCCAGGCCCCAGCACCCACAGTCAACTCA
 CTTTGGGAAGCTAAGGGGTGCCCGAGTACCACTGCCAGTGAGATCCTGGGGCCTGTGGACCAATACCTG
 GGGGTGCCCTACGCAGCTCCCCGATCGGCGAGAAACGTTTCTGCCCTGAACCAACCCCATACTGGT
 CGGGCATCCGGAACGCCACACACTTTCCACCAGTGTGCCCCAGAACATCCACACAGCTGTGCCGAAGT
 CATGCTGCCGGTCTGGTTCAGTCCAACTTGGATATCGTCGCTACTTACATCCAGGAGCCCAACGAAGAC
 TGTCTCTACCTGAACGTCTATGTCCGACGGAGGATGGATCCGGCGCTAAGAAACAGGGCGAGGACTTAG
 CGGATAATGACGGGGATGAAGATGAAGACATCCGGGACAGTGGTCTAAACCCGTCATGGTCTACATCCA
 CGGAGGCTTTACATGGAAGGGACAGGCAACATGATTGATGGCAGCATCCTCGCCAGTTATGGCAATGTC
 ATCGTCATCACCCCTCAACTATCGGGTGGAGTGTAGGTTTCTGAGTACTGGAGATCAGGCTGCCAAGG
 GCAACTATGGGCTCCTTGACCAGATCCAGGCCCTCCGCTGGGTGAGCGAGAATATTGCCCTTCTCGGGG
 AGACCCCGCCGGATCACTGTCTTTGGCTCGGGCATTGGTGCATCCTGCGTCAGCCTCCTAACGTTGTCA
 CATCACTCAGAGGGACTTTTCCAGAGAGCCATCATCAAAGTGGCTCTGCTCTGTCCAGCTGGGCTGTGA
 ACTACCAACCAGTGAAGTACACCAGCCTGCTGGCAGACAAAGTGGGCTGTAATGTGCTGGACCCGTGGA
 TATGGTGGACTGTCTTCGGCAAAGAGTGCCAAGGAGCTGGTAGAGCAGGACATCCAGCCAGCCGCTAC
 CACGTGGCCTTTGGCCCTGTGATTGATGGTGTGTCATTCTGATGACCCGAGATCCTCATGGAGCAGG
 GCGAGTTCTCAACTATGACATCATGTAGTGTCAACCAGGGCGAGGGTCTCAAGTTTGTGGAAGGGGT
 GGTGGACCCCTGAGGATGGTGTCTCTGGCACTGACTTTGACTATTCCGCTCCAATTTTGTGGACAATCTG
 TATGGCTATCCTGAGGGTAAGGACACCCTGCGAGAGACCATCAAGTTCATGTATACAGACTGGGCAGACC
 GTGACAACCCTGAGACCCGCCGTAACAACTGGTGGCACTCTTCACTGACCACCAGTGGGTGGAGCCCTC
 AGTGGTGACAGCCGATCTGCATGCCGCTACGGCTCGCTACCTACTTCTACGCTTCTATCATCACTGC
 CAGAGCCTCATGAAGCCTGCTTGGTCCAGATGCAGCTCATGGGGATGAAGTACCCTATGTTTTGGGGTTC
 CTATGGTAGGCCCACTGACCTTTCCCTGCAACTTCTCCAAGAATGATGTTATGCTCAGTGTGTCGT
 CATGACCTATTGGACCACTTTGCCAAGACTGGGGATCCCAACAAGCCGGTCCCCCAGGACCAAGTTC
 ATTCACACCAAGGCCAACCGCTTTGAGGAAGTGGCCTGGTCCAAATACAATCCCCGAGACCAGCTTACC
 TTCACATCGGGCTGAAACCAAGGGTCCGAGATCATTACCGGGCCACTAAGGTGGCCTTTTGGAAACATCT
 GGTGCCGCACCTATAACCTGCATGACATGTTCCACTATACGTCCACCACCACCAAGTGCCGCCTCCG
 GATACCACCCACAGCTCCACATCACCCGAGGCCAATGGCAAGACCTGGAGCACCAAGCGGCCAGCCA
 TCTCACCTGCCTACAGCAACGAGAATGCCAGGGTCTTGGAACGGGGACCAGGATGCAGGGCCACTCCT
 GGTGGAGAACCCTCGTGACTACTCCACTGAATTAAGTGTACCATCGCCGTGGGGCCTCCATCCTGTTC
 CTTAACGTTCTGGCCTTCGCTGCCCTCTACTACCGTAAGGACAAACGGCGCCAGGAGCCCTGCGGCAGC
 CTAGCCCTCAGCGGGGAGCCTGGGCCCGGAGTTGGGAGCTGCTCCAGAGGAGGAGCTGGCAGCATTACA
 ACTGGGCCCCACCCACCAGAGTGTGAGGCCAGTCCCCCATGACACGCTGCGCCTCACTGCATTTGCC
 GACTACACCTGACCCTGCGGCGCTCCCGGATGACATCCCACTCATGACCCCAACACCATCACTATGA
 TCCCAACTCCCTGGTAGGGCTGCAGACATTGCCCCCTATAACACCTTTGCCGCAGGGTTCAACAGTAC
 CGGGCTGCCCCACTCACACTCCACTACCCGGTA

ACCGTACGCGGCCGCTCGAG - GFP Tag - GTTTAA

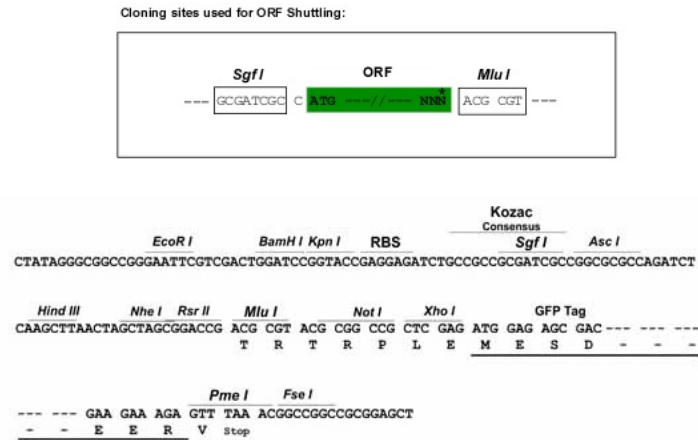
Protein Sequence: >RG207955 representing NM_018977
 Red=Cloning site Green=Tags(s)

```

MWLRLGPPSLSLSPKPTVGRSLCLTLWFLSLALRASTQAPAPTVNTHFGKLRGARVPLPSEILGPVDQYL
GVPYAAPPIGEKRFLPPEPPPYWSGIRNATHFPPVCPQNIHTAVPEVMLPVWFTANLDIVATYIQEPNED
CLYLNIVYVPTEDGSGAKKQGEDLADNDGDEDEDIRDSGAKPVMVYIHGGSYMEGTGNMIDGSILASYGNV
IVITLNYRVGVLGFLSTGDQAAKGNYGLLDQIQALRWVSENIAFFGGDPRRITVFGSGIGASCVSLLTSL
HHSEGLFQRAIIQSGSALSSWAVNYQPVKYTSLADKVGCVLDTVDMVDCLRQKSAKELVEQDIQARY
HVAFGPVIDGDVIPDDPEILMEQGEFLNYDIMLGVNQGEGLKFVEGVVDPEDGVSGTDFDYSVSNFVDNL
YGYPEGKDTLRETIKFMYPDWADRDNPETRRKTLVALFTDHQWVEPSVVTADLHARYGSPTYFYAFYHHC
QSLMKPAWSDAAHGDEVPYVFGVPMVGPTDLFPCNF SKNDVMLS AVVMTYWTNFAKTGDPNKPVPQDTKF
IHTKANRFEEVAWSKYNPRDQLYLHIGLKPRVRDHYRATKVAFWKHLVPHLYNLHDMFHYTSTTTKVPPP
DTTHSSHITRRPNGKTWSTKRPAISPAYSNENAQGSWNGDQDAGPLLVENPRDYSTE LSVTI AVGASILF
LNVLAFAALYYRKDKRRQEPLRQPSQRGAWAPELGAAPPEEL AALQLGPTTHECEASPPHDTLRLTALP
DYTLTLRRSPDDIPLMTPNTITMIPNSLVGLQTLHPYNTFAAGFNSTGLPHSHSTTRV
  
```

TRTRPLE - GFP Tag - V

Restriction Sites: Sgfl-MluI

Cloning Scheme:


ACCN: NM_018977

ORF Size: 2484 bp

OTI Disclaimer: The molecular sequence of this clone aligns with the gene accession number as a point of reference only. However, individual transcript sequences of the same gene can differ through naturally occurring variations (e.g. polymorphisms), each with its own valid existence. This clone is substantially in agreement with the reference, but a complete review of all prevailing variants is recommended prior to use. [More info](#)

OTI Annotation: This clone was engineered to express the complete ORF with an expression tag. Expression varies depending on the nature of the gene.

Components: The ORF clone is ion-exchange column purified and shipped in a 2D barcoded Matrix tube containing 10ug of transfection-ready, dried plasmid DNA (reconstitute with 100 ul of water).

Reconstitution Method:

1. Centrifuge at 5,000xg for 5min.
2. Carefully open the tube and add 100ul of sterile water to dissolve the DNA.
3. Close the tube and incubate for 10 minutes at room temperature.
4. Briefly vortex the tube and then do a quick spin (less than 5000xg) to concentrate the liquid at the bottom.
5. Store the suspended plasmid at -20°C. The DNA is stable for at least one year from date of shipping when stored at -20°C.

RefSeq: [NM_018977.2](#), [NP_061850.2](#)

RefSeq Size: 3905 bp

RefSeq ORF: 2487 bp

Locus ID: 54413

UniProt ID: [Q9NZ94](#)

Cytogenetics: Xq13.1

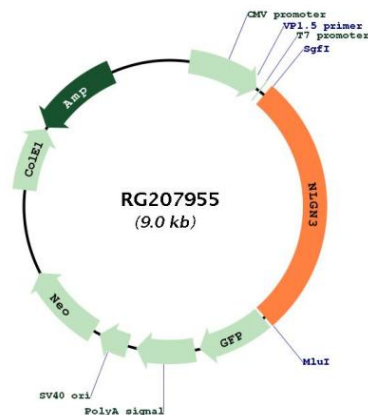
Domains: COesterase

Protein Families: Druggable Genome, Transmembrane

Protein Pathways: Cell adhesion molecules (CAMs)

Gene Summary: This gene encodes a member of a family of neuronal cell surface proteins. Members of this family may act as splice site-specific ligands for beta-neurexins and may be involved in the formation and remodeling of central nervous system synapses. Mutations in this gene may be associated with autism and Asperger syndrome. Multiple transcript variants encoding distinct isoforms have been identified for this gene. [provided by RefSeq, Oct 2009]

Product images:



Circular map for RG207955