

Product datasheet for **RG206501**

PADI4 (NM_012387) Human Tagged ORF Clone

Product data:

Product Type:	Expression Plasmids
Product Name:	PADI4 (NM_012387) Human Tagged ORF Clone
Tag:	TurboGFP
Symbol:	PADI4
Synonyms:	PAD; PAD4; PADI5; PDI4; PDI5
Mammalian Cell Selection:	Neomycin
Vector:	pCMV6-AC-GFP (PS100010)
E. coli Selection:	Ampicillin (100 ug/mL)



[View online »](#)

ORF Nucleotide Sequence:

>RG206501 representing NM_012387
 Red=Cloning site Blue=ORF Green=Tags(s)

TTTTGTAATACGACTCACTATAGGGCGGCCGGAATTCGTCGACTGGATCCGGTACCGAGGAGATCTGCC
 GCC**GCGATCGCC**

ATGGCCCAGGGGACATTGATCCGTGTGACCCAGAGCAGCCACCCATGCCGTGTGTGTGCTGGGCACCT
 TGA CT CAGCTTGACATCTGCAGCTCTGCCCTGAGGACTGCACGTCCTTACGATCAACGCCTCCCCAGG
 GGTGGTCGTGGATATTGCCACAGCCCTCCAGCCAAGAAGAAATCCACAGGTTCTCCACATGGCCCTG
 GACCTGGGGTAGAGGTGACCTGACGATGAAAGCGGCCAGTGGTAGCACAGGCGACCAGAAGGTTCAGA
 TTTCACTACGGACCAAGACTCCACCAGTCAAAGCTCTACTCTACCTACCGCGGTGGAATCTCCCT
 GTGCGCAGACATACCCGCACCGGCAAAGTGAAGCCAACCAGAGCTGTGAAAGATCAGAGGACCTGGACC
 TGGGGCCCTTGTGGACAGGGTGCATCTGCTGGTGAAGTGTGACAGAGACAATCTGAATCTTCTGCCA
 TGGACTGCGAGGATGATGAAGTCTTGACAGCGAAGACCTGCAGGACATGTCGCTGATGACCTGAGCAC
 GAAGACCCCAAGGACTTCTTCAAAACCATACACTGGTCTCCACGTGGCCAGGCTGAGATGGACAAA
 GTGAGGGTGTTCAGGCCACACGGGGCAAAGTGTCTTCAAGTGCAGCGTAGCTTTGGGTCCCAAGTGGC
 CCTCTACTACCTGATGGTCCCCGGTGGAAAGCACAACATGGACTTCTACGTGGAGGCCCTCGCTTTCCC
 GGACACCGACTTCCCAGGGCTCATTACCCTCACCATCTCCCTGCTGGACACGTCCAACTGGAGCTCCCC
 GAGGCTGTGGTGTCCAAGACAGCGTGGTCTTCCGCGTGGCGCCCTGGATCATGACCCCAACACCCAGC
 CCCCAGGAGGTGTACGCGTGCAGTATTTTGAAGTGAAGGACTTCTGAAGTCAGTGACTACTCTGGC
 CATGAAAGCCAAGTGAAGCTGACCATCTGCCCTGAGGAGGAGAACATGGATGACCAGTGGATGCAGGAT
 GAAATGGAGATCGGCTACATCCAAGCCCCACAAAAACTGCCCGTGGTCTTCGACTCTCAAGGAACA
 GAGGCCCTGAAGGAGTTTCCCATCAAACGAGTGTGGTCCAGATTTTGGCTATGTAACCGAGGGCCCCA
 AACAGGGGTATCAGTGGACTGGACTCCTTTGGGAACCTGGAAGTGAAGCCCCAGTCACAGTCAGGGGC
 AAGGAATACCCGCTGGGCAGGATTCTTTCGGGGACAGCTGTTATCCAGCAATGACAGCCGGCAGATGC
 ACCAGGCCCTGCAGGACTTCTCAGTGCCAGCAGGTGCAGGCCCTGTGAAGCTCTATTCTGACTGGCT
 GTCCGTGGGCCACGTGGACGAGTTCTGAGCTTTGTGCCAGCACCCGACAGGAAGGGCTTCCGGCTGCTC
 CTGGCCAGCCCCAGTCTGCTACAAACTGTTCCAGGAGCAGCAGAATGAGGGCCACGGGGAGGCCCTGC
 TGTTCAAGGGATCAAGAAAAAAAACAGCAGAAAATAAAGAACATTCTGTCAAACAAGACATTGAGAGA
 ACATAATTCATTTGTGGAGAGATGCATCGACTGGAACCGCGAGCTGCTGAAGCGGGAGCTGGCCTGGCC
 GAGAGTGACATCATTGACATCCCGCAGCTCTTCAAGCTCAAAGAGTTCTCTAAGCGGAAGCTTTTTTCC
 CCAACATGGTGAACATGCTGGTGTAGGGAAGCACCTGGGCATCCCAAGCCCTTCGGGCCCGTCATCAA
 CGGCCGCTGCTGCCTGGAGGAGAAGGTGTGTTCCCTGCTGGAGCCACTGGGCCTCCAGTGACCTTCATC
 AACGACTTCTTACCTACCACATCAGGCATGGGAGGTGCACTGCGGCACCAACGTGCGCAGAAAGCCCT
 TCTCCTCAAGTGGTGAACATGGTGCCC

AG**CGGACCG**ACGCGTACGCGGCCGCTCGAG - GFP Tag - GTTTAA

Protein Sequence: >RG206501 representing NM_012387
Red=Cloning site Green=Tags(s)

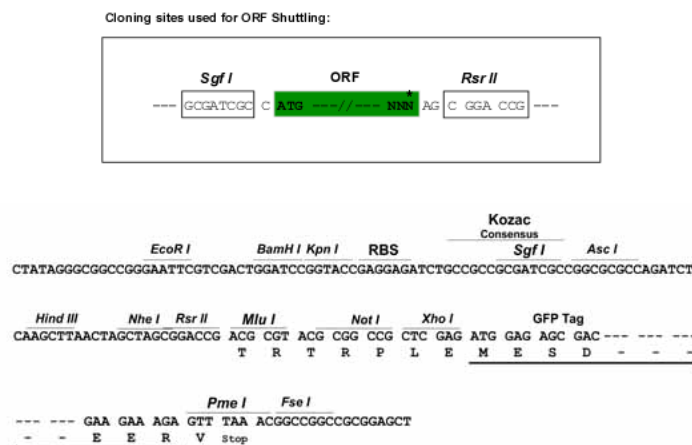
```

MAQGTILIRVTPEQPTHAVCVLGTLTQLDICSSAPEDCTSFSINASPGVVVDIAHSPPAKKKSTGSSTWPL
DPGVEVLTLMKAASGSTGDQKVQISYYGPKTPPVKALLYLTAVEISLCADITRTGKVKPTRAVKDQRTWT
WGPCGQGAILLVNCDRDNLESSAMDCEDDEVLDSEDLQDMSLMTLSTKTPKDFFTNHTLVLHVAREMDK
VRVFQATRGLSSKCSVVLGPKWPSHYLMVPGGKHNMDFYVEALAFPDTDFPGLITLTISSLDTSNLELP
EAVVFQDSVVFRVAPWIMTPNTQPPQEVYACSFENEDFLKSVTTLAMKAKCKLTICPEEENMDDQWMQD
EMEIGYIQAPHKTLPVVFDSPRNRGLKEFPIKRVMGPDFGYVTRGPQTGGISGLDSFGNLEVSPVTVRG
KEYPLGRILFGDSCYPSNDRQMHQALQDFLSAQVQAPVKLYSDWLVGHVDFLSFVPAPDRKGFRL
LASPRSCYKLFQEQQNEGHGEALLFEGIKKKKQKIKNILSNKTLREHNSFVERCIDWNRELLKRELGLA
ESDIIDIPQLFKLKEFSKAEAFFPNMVMNLVLGKHLGIPKPGPVIINGRCCLEEKVCSLLEPLGLQCTFI
NDDFTYHIRHGEVHCGTNVRRKPFSEKWWNMVP
    
```

SGPTRRRLE - GFP Tag - V

Restriction Sites: SgfI-RsrII

Cloning Scheme:



ACCN: NM_012387

ORF Size: 1989 bp

OTI Disclaimer: The molecular sequence of this clone aligns with the gene accession number as a point of reference only. However, individual transcript sequences of the same gene can differ through naturally occurring variations (e.g. polymorphisms), each with its own valid existence. This clone is substantially in agreement with the reference, but a complete review of all prevailing variants is recommended prior to use. [More info](#)

OTI Annotation: This clone was engineered to express the complete ORF with an expression tag. Expression varies depending on the nature of the gene.

Components: The ORF clone is ion-exchange column purified and shipped in a 2D barcoded Matrix tube containing 10ug of transfection-ready, dried plasmid DNA (reconstitute with 100 ul of water).

Reconstitution Method:

1. Centrifuge at 5,000xg for 5min.
2. Carefully open the tube and add 100ul of sterile water to dissolve the DNA.
3. Close the tube and incubate for 10 minutes at room temperature.
4. Briefly vortex the tube and then do a quick spin (less than 5000xg) to concentrate the liquid at the bottom.
5. Store the suspended plasmid at -20°C. The DNA is stable for at least one year from date of shipping when stored at -20°C.

RefSeq: [NM_012387.1](#), [NP_036519.1](#)

RefSeq Size: 2263 bp

RefSeq ORF: 1992 bp

Locus ID: 23569

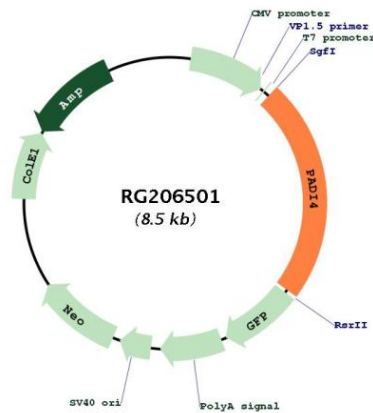
UniProt ID: [Q9UM07](#)

Cytogenetics: 1p36.13

Domains: PAD

Gene Summary: This gene is a member of a gene family which encodes enzymes responsible for the conversion of arginine residues to citrulline residues. This gene may play a role in granulocyte and macrophage development leading to inflammation and immune response. [provided by RefSeq, Jul 2008]

Product images:



Circular map for RG206501