

Product datasheet for **RG206329**

MAGEB18 (NM_173699) Human Tagged ORF Clone

Product data:

Product Type:	Expression Plasmids
Product Name:	MAGEB18 (NM_173699) Human Tagged ORF Clone
Tag:	TurboGFP
Symbol:	MAGEB18
Mammalian Cell Selection:	Neomycin
Vector:	pCMV6-AC-GFP (PS100010)
E. coli Selection:	Ampicillin (100 ug/mL)
ORF Nucleotide Sequence:	>RG206329 representing NM_173699 Red=Cloning site Blue=ORF Green=Tags(s)

TTTTGTAATACGACTCACTATAGGGCGGCCGGAATTCGTCGACTGGATCCGGTACCGAGGAGATCTGCC
GCC**CGATCGCC**

ATGCCTCGAGGTCAGAAGAGTAAGCTCCGTGCCGTGAGAAACGCCACCAGGCTCGTTGTGAGAATCAGG
ATCTGGGAGCTACGCAGGCCACTGTGGCAGAAGGAGAGTCACCCTCCTCTGCCTATCTTCTCTTTGGTGA
CAGACCCAGAAATTTGCCTGTGCTGAGACACCTAGCATCCCTGAAGCGCTTCAGGGAGCCCCATCCACC
ACCAATGCTATTGCACCTGTTTCATGCAGTTCAAATGAAGGTGCCAGCAGCCAAGATGAGAAAAGTCTAG
GTTCTCAAGGGAAGCTGAGGGCTGAAAGAAGATCCTTTAAACAAGAAAGTAGTGTGCTGGTGCATTT
CTTGCTTCAGAAGTATGAAACGAAAGAGCCAATTACAAAGGGAGATATGATAAAGTTTGTATCAGGAAG
GATAAGTGTCACCTCAATGAGATCCTCAAGAGAGCCTCTGAGCACATGGAGCTGGCACTTGGTGTGATT
TGAAGGAAGTGGATCCCATCAGGCACTACTATGCCTTTTTCAGCAAATTAGACCTCACCTATGATGAAAC
AACCAGTGATGAAGAAAAAATCCCAAGACTGGCCTCCTGATGATTGCACTGGGTGTGATCTTTCTGAAT
GGCAACCGTGCCCGAGAAGAGGCAGTCTGGAAATATGAATATGATGGGTGTATATGCTGATAGGAAGC
ACTTCTCTATGGGGATCCAGGAAGGTCATGACCAAAGATTTGGTGCAGCTAAAGTACCTGGAGTACCA
GCAAGTGCCCAACAGTGATCCTCCAGCTATGAATTCCTGTGGGTCCAAGAGCTCACGCTGAAACTAGC
AAGATGAAAGTCTGGAGTTTGTAGCCAAGATACATGATACCGTCCCTAGTGCCTTCCCATCCTGCTATG
AAGAGGCTTTGAGGGATGAGGAACAGAGAACCAGCCAGAGCTGCAGCCAGGGCTCATACTGCTGCCAT
GGCAAATGCACGTTCCAGAACCAGTCTAGCAGCTTCTCCATGCTAAG

ACGCGTACGCGGCCGCTCGAG - GFP Tag - GTTTAA



[View online »](#)

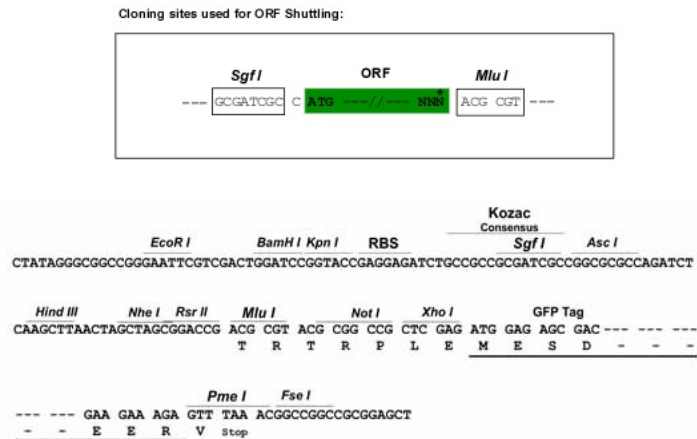
Protein Sequence: >RG206329 representing NM_173699
 Red=Cloning site Green=Tags(s)

MPRGQKSKLRAREKRHQARCENQDLGATQATVAEGESPSSAYLLFGDRPQNLPAAETPSIPEALQGAPST
 TNAIAPVSCSSNEGASSQDEKSLGSSREAEGWKEDPLNKKVVSLVHFLQKYETKEPITKGMKIFVIRK
 DKCHFNEILKRASEHMELALGVDLKEVDIRHYAFAFFSKLDLTYDETTSDEEKIPKTGLLMIALGVIFLN
 GNRAPEEAVWEIMNMMGVYADRKHFLYGDPKRVMTKDLVQLKYLEYQQVPNSDPPRYEFLWGPRHAETS
 KMKVLEFVAKIHDTVPSAFPSCYEEALRDEEQRTQAAAAAHTAAMANARSRTTSSSFSAK

TRTRPLE - GFP Tag - V

Restriction Sites: SgfI-MluI

Cloning Scheme:



ACCN: NM_173699

ORF Size: 1029 bp

OTI Disclaimer: The molecular sequence of this clone aligns with the gene accession number as a point of reference only. However, individual transcript sequences of the same gene can differ through naturally occurring variations (e.g. polymorphisms), each with its own valid existence. This clone is substantially in agreement with the reference, but a complete review of all prevailing variants is recommended prior to use. [More info](#)

OTI Annotation: This clone was engineered to express the complete ORF with an expression tag. Expression varies depending on the nature of the gene.

Components: The ORF clone is ion-exchange column purified and shipped in a 2D barcoded Matrix tube containing 10ug of transfection-ready, dried plasmid DNA (reconstitute with 100 ul of water).

Reconstitution Method:

1. Centrifuge at 5,000xg for 5min.
2. Carefully open the tube and add 100ul of sterile water to dissolve the DNA.
3. Close the tube and incubate for 10 minutes at room temperature.
4. Briefly vortex the tube and then do a quick spin (less than 5000xg) to concentrate the liquid at the bottom.
5. Store the suspended plasmid at -20°C. The DNA is stable for at least one year from date of shipping when stored at -20°C.

RefSeq: [NM_173699.2](#)

RefSeq Size: 1827 bp

RefSeq ORF: 1032 bp

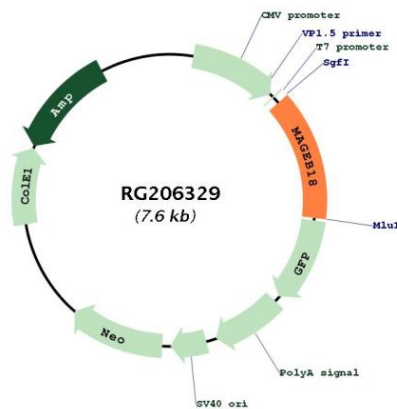
Locus ID: 286514

UniProt ID: [Q96M61](#)

Cytogenetics: Xp21.3

Gene Summary: May enhance ubiquitin ligase activity of RING-type zinc finger-containing E3 ubiquitin-protein ligases. Proposed to act through recruitment and/or stabilization of the Ubl-conjugating enzyme (E2) at the E3:substrate complex.[UniProtKB/Swiss-Prot Function]

Product images:



Circular map for RG206329