

## Product datasheet for **RG204491**

### PP2A-beta (PPP2CB) (NM\_001009552) Human Tagged ORF Clone

#### Product data:

Product Type:	Expression Plasmids
Product Name:	PP2A-beta (PPP2CB) (NM_001009552) Human Tagged ORF Clone
Tag:	TurboGFP
Symbol:	PP2A-beta
Synonyms:	PP2Abeta; PP2CB
Mammalian Cell Selection:	Neomycin
Vector:	pCMV6-AC-GFP (PS100010)
E. coli Selection:	Ampicillin (100 ug/mL)
ORF Nucleotide Sequence:	>RG204491 representing NM_001009552 Red=Cloning site Blue=ORF Green=Tags(s)

TTTTGTAATACGACTCACTATAGGGCGGCCGGAATTCGTCGACTGGATCCGGTACCGAGGAGATCTGCC  
GCC**CGATCGCC**

ATGGACGACAAGGCGTTCACCAAGGAGCTGGACCAGTGGGTCGAGCAGCTGAACGAGTGAAGCAGCTGA  
ACGAGAACCAAGTGGGACGCTGTGCGAGAAGGCAAAGGAAATTTAACAAAAGAATCAAATGTGCAAGA  
GGTTCGTTGCCCTGTTACTGTCTGTGGAGATGTGCATGGTCAATTCATGATCTTATGGAAGCTTTAGA  
ATTGGTGGAAAATCACCGGATACAACTACTTATTCATGGGTGACTATGTAGACAGAGGATATTATTCAG  
TGGAGACTGTGACTCTTCTGTAGCATTAAAGGTGCGTTATCCAGAACGCATTACAATATTGAGAGGAAA  
TCACGAAAGCCGACAAATTACCCAAGTATATGGCTTTTATGATGAATGTCTGCGAAAGTATGGGAATGCC  
AACGTTTGGAAATATTTACAGATCTCTTTGATTATCTTCCACTTACAGCTTTAGTAGATGGACAGATAT  
TCTGCCTCCATGGTGGCCTCTCTCCATCCATAGACACACTGGATCATATAAGAGCCCTGGATCGTTTACA  
GGAAGTCCACATGAGGGCCCAATGTGTGATCTGTTATGGTCAGATCCAGATGATCGTGGTGGATGGGGT  
ATTCACCACGTGGTGTGGCTACACATTTGGACAAGACATTTCTGAAACCTTTAACCATGCCAATGGTC  
TCACACTGGTTTCTCGTGCCACCAGCTTGTAAATGGAGGGATACAATGGTGTGATGATCGGAATGTGGT  
TACCATTTTCAGTGCACCAATTACTGTTATCGTTGTGGGAACCGGCTGCTATCATGGAATTAGATGAC  
ACTTTAAAATATTCCTTCTTCAATTTGACCCAGCGCCTCGTCGTGGTGGCCTCATGTTACACGGCGCA  
CCCAGACTACTTCTTA

**ACGCGT**ACGCGGCCGCTCGAG - GFP Tag - GTTTAA



[View online »](#)

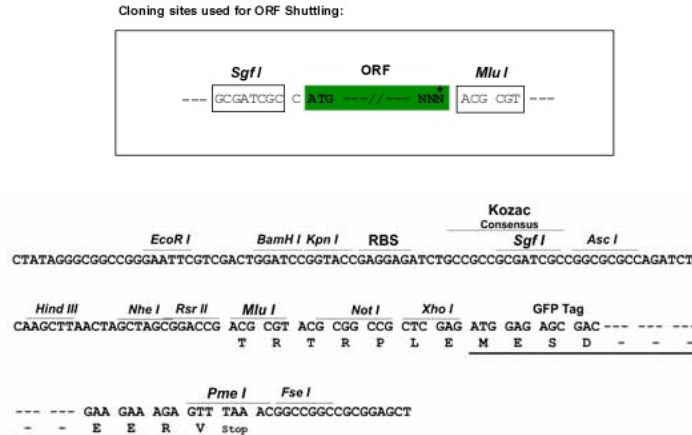
**Protein Sequence:** >RG204491 representing NM\_001009552  
 Red=Cloning site Green=Tags(s)

MDDKAFTKELDQWVEQLNECKQLNENQVRTLCEKAKEILTKESNVQEVRCPVTVCGDVHGGQFHDLMELEFR  
 IGKSPDNTYLFMGDYVDRGYYSVETVLLVALKVRYPERITILRGNHESRQITQVYGFYDECLRKYGNA  
 NVWKYFTDLFDYLPLTALVDGQIFCLHGGLSIDTLDIRALDRLQEVPHGPMCDLLWSDPDRGGWG  
 ISPRGAGYTFGGQDISETFNHANGLLVSRAGQLVMEGYNWCHDRNVVTFISAPNYCYRCGNQAAIMELDD  
 TLKYSFLQFDPAPRRGEPHVTRTRTPDYFL

TRTRPLE - GFP Tag - V

**Restriction Sites:** SgfI-MluI

**Cloning Scheme:**



**ACCN:** NM\_001009552

**ORF Size:** 927 bp

**OTI Disclaimer:** The molecular sequence of this clone aligns with the gene accession number as a point of reference only. However, individual transcript sequences of the same gene can differ through naturally occurring variations (e.g. polymorphisms), each with its own valid existence. This clone is substantially in agreement with the reference, but a complete review of all prevailing variants is recommended prior to use. [More info](#)

**OTI Annotation:** This clone was engineered to express the complete ORF with an expression tag. Expression varies depending on the nature of the gene.

**Components:** The ORF clone is ion-exchange column purified and shipped in a 2D barcoded Matrix tube containing 10ug of transfection-ready, dried plasmid DNA (reconstitute with 100 ul of water).

**Reconstitution Method:**

1. Centrifuge at 5,000xg for 5min.
2. Carefully open the tube and add 100ul of sterile water to dissolve the DNA.
3. Close the tube and incubate for 10 minutes at room temperature.
4. Briefly vortex the tube and then do a quick spin (less than 5000xg) to concentrate the liquid at the bottom.
5. Store the suspended plasmid at -20°C. The DNA is stable for at least one year from date of shipping when stored at -20°C.

**RefSeq:** [NM\\_001009552.2](#)

**RefSeq Size:** 1987 bp

**RefSeq ORF:** 930 bp

**Locus ID:** 5516

**UniProt ID:** [P62714](#)

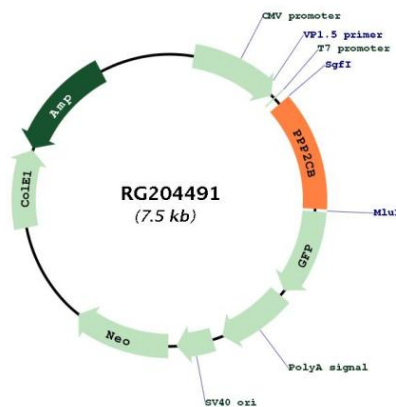
**Cytogenetics:** 8p12

**Protein Families:** Druggable Genome, Phosphatase

**Protein Pathways:** Long-term depression, Oocyte meiosis, TGF-beta signaling pathway, Tight junction, Wnt signaling pathway

**Gene Summary:** This gene encodes the phosphatase 2A catalytic subunit. Protein phosphatase 2A is one of the four major Ser/Thr phosphatases, and it is implicated in the negative control of cell growth and division. It consists of a common heteromeric core enzyme, which is composed of a catalytic subunit and a constant regulatory subunit, that associates with a variety of regulatory subunits. This gene encodes a beta isoform of the catalytic subunit. [provided by RefSeq, Mar 2010]

### Product images:



Circular map for RG204491