

## Product datasheet for **RG203781**

### TrkC (NTRK3) (NM\_001007156) Human Tagged ORF Clone

#### Product data:

Product Type:	Expression Plasmids
Product Name:	TrkC (NTRK3) (NM_001007156) Human Tagged ORF Clone
Tag:	TurboGFP
Symbol:	TrkC
Synonyms:	gp145(trkC); GP145-TrkC; TRKC
Mammalian Cell Selection:	Neomycin
Vector:	pCMV6-AC-GFP (PS100010)
E. coli Selection:	Ampicillin (100 ug/mL)



[View online »](#)

**ORF Nucleotide Sequence:**

>RG203781 representing NM\_001007156  
 Red=Cloning site Blue=ORF Green=Tags(s)

TTTTGTAATACGACTCACTATAGGGCGGCCGGAATTCGTCGACTGGATCCGGTACCGAGGAGATCTGCC  
 GCC**CGGATCGCC**

ATGGATGTCTCTCTTTGCCAGCCAAGTGTAGTTCTGGCGGATTTTCTGCTGGGAAGCGTCTGGCTGG  
 ACTATGTGGGCTCCGTGCTGGCTTGCCCTGCAAATTTGTCTGCAGCAAGACTGAGATCAATTGCCGGCG  
 GCCGGACGATGGGAACCTCTCCCCCTCTGGAAGGGCAGGATTCAGGGAACAGCAATGGGAACGCCAGT  
 ATCAACATCACGGACATCTCAAGGAATCACTTCCATACACATAGAGAAGTGGCGCAGTCTTACACGC  
 TCAACGCCGTGGACATGGAGCTTACACCGGACTTCAAAAGCTGACCATCAAGAAGTCAAGACTTCCGGAG  
 CATTAGCCAGAGCCTTTGCCAAGAACCCCATTTGCGTTATATAAACCTGTCAAGTAAACGGCTCACC  
 AACTCTCGTGGCAGCTTCCAGACGCTGAGTCTTGGGAATTGCAGTTGGAGCAGAAGTCTTTCAACT  
 GCAGCTGTGACATCCGCTGGATGCAGCTCTGGCAGGAGCAGGGGAGGCCAAGCTCAACAGCCAGAAGCT  
 CTACTGCATCAACGCTGATGGCTCCAGCTTCTCTCTTCCGCATGAACATCAGTCAGTGTGACCTTCT  
 GAGATCAGCGTGAACAGCTCAACCTGACCGTACGAGAGGGTGACAATGCTGTTATCACTTGCAATGGCT  
 CTGGATCACCCCTTCTGATGTGGACTGGATAGTCACTGGGCTGCACTCCATCAACACTCACCAGACCAA  
 TCTGAACTGGACCAATGTTATGCCATCAACTGACGCTGGTGAATGTGACGAGTGAAGCAATGGCTTC  
 ACCCTGACGTGCATTGCAGAGAAGCTGGTGGGCATGAGCAATGCCAGTGTGGCCCTACTGTCTACTATC  
 CCCACGTGTGGTGAAGCTGGAGGAGCTGAGCTGCGCCTGGAGCACTGCATCGAGTTTGTGGTGGCTGG  
 CAACCCCAACCAACGCTGCACTGGCTGCACAATGGGCAGCCTCTGCGGGAGTCCAAGATCATCCATGTG  
 GAATACTACCAAGAGGGAGAGATTTCCGAGGGCTGCCTGCTTCAACAAGCCCACCCACTACAACATG  
 GCAACTATACCTCATTGCCAAAACCCACTGGGCACAGCCAACCAGACCATCAATGGCCACTTCTCAA  
 GGAGCCCTTCCAGAGAGCACGGATAACTTTATCTTGTGTTGACGAAGTGAGTCCACACCTCCTATCACT  
 GTGACCCACAACCAGAGAAGACACTTTTGGGTATCCATAGCAGTTGGACTTGTGCTTTTGCCTGTG  
 TCCTGTTGGTGGTCTCTTCGTATGATCAACAAATATGGTCGACGGTCCAAATTTGGAATGAAGGGTCC  
 CGTGGCTGTATCAGTGGTGAAGGAGTCAAGCAGCCACTGCACCACATCAACCACGGCATCACCACG  
 CCCTCGTCACTGGATGCGGGGCCGACTGTGGTCAATGGCATGACTCGCATCCCTGTCATTGAGAACC  
 CCCAGTACTTCCGTCAGGGACACAAGTCCACAAGCCGGACACGTGGGTCTTTTCAAACATAGACAATCA  
 TGGGATATTAACCTGAAGGACAATAGAGATCATCTAGTCCCATCACTACTATATATAGAGGAACCT  
 GAGGTCCAGAGTGGGAAGTGTCTTACCAAGGTACATGGTTTCAAGAGAAATTATGTTGAATCCAATAA  
 GCCTTCCCGGACATCCAAGCCTTAAACCATGGCATCTATGTTGAGGATGTCAATGTTTATTTAGCAA  
 AGGACGTATGGCTTT

**ACGCGTACGCGGCCGCTCGAG** - GFP Tag - GTTTAA

**Protein Sequence:**

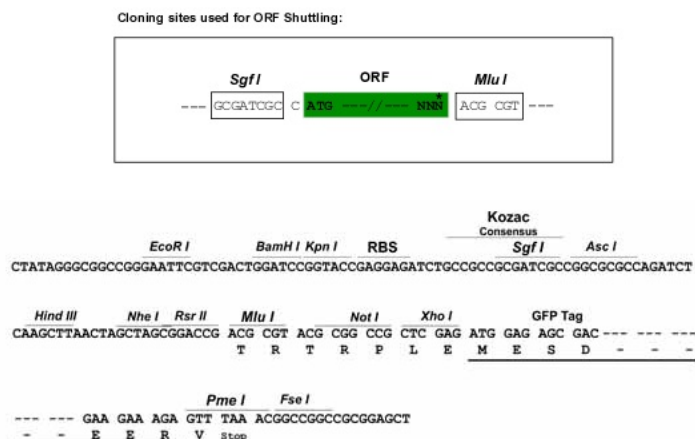
>RG203781 representing NM\_001007156  
 Red=Cloning site Green=Tags(s)

MDVSLCPAKCSFWRIFLLGSVWLDYVGSVLACPANCVCVKTEINCRPPDDGNLFPLLEGQDSGNSNGNAS  
 INITDISRNITSIHIENWRSLHTLNAVDMELYTGLQKLTIKNSGLRSIQPRFAKNPHLRYINLSSNRLT  
 TLSWQLFQTL SLRELQLEQNFFNCSDIRWMQLWQEQGEAKLNSQNL YCINADGSQPLFRMNISQCDLP  
 EISVSHVNLTVREGDNAVITCNGSGSPLPDVDWIVTGLQSIINTHTNLNWTNVHAINLTLVNVTSEDNGF  
 TLTCIAENVVGMNASVALTVYYPPRVVSL EEPRLRLEHCIEFVVRGNPPPTLHWHNGQPLRESKIIHV  
 EYYQEGEISEGCLLFNKPTHYNNGYTLIAKNPLGTANQTINGHFLKEPFPPESTDNFILFDEVSPPTTIT  
 VTHKPEEDTFGVSIAVGLAAFACVLLVFLVFMINKYGRRSKFGMKGPVAVISGEEDSASPLHHINHGITT  
 PSSLDAGPDTVVIGMTRIPVIEINPQYFRQGHNCHKPDTWVFSNIDNHGILNLDKNDRLHVPSTHYIYE  
 EVQSGEVSYPESHGFR EIMLNPI SLPGHSLNHIYVEDVNVYF SKGRHGF

**TRTRPLE** - GFP Tag - V

**Restriction Sites:**

SgfI-MluI

**Cloning Scheme:**


**ACCN:** NM\_001007156

**ORF Size:** 1836 bp

**OTI Disclaimer:** The molecular sequence of this clone aligns with the gene accession number as a point of reference only. However, individual transcript sequences of the same gene can differ through naturally occurring variations (e.g. polymorphisms), each with its own valid existence. This clone is substantially in agreement with the reference, but a complete review of all prevailing variants is recommended prior to use. [More info](#)

**OTI Annotation:** This clone was engineered to express the complete ORF with an expression tag. Expression varies depending on the nature of the gene.

**Components:** The ORF clone is ion-exchange column purified and shipped in a 2D barcoded Matrix tube containing 10ug of transfection-ready, dried plasmid DNA (reconstitute with 100 ul of water).

**Reconstitution Method:**

1. Centrifuge at 5,000xg for 5min.
2. Carefully open the tube and add 100ul of sterile water to dissolve the DNA.
3. Close the tube and incubate for 10 minutes at room temperature.
4. Briefly vortex the tube and then do a quick spin (less than 5000xg) to concentrate the liquid at the bottom.
5. Store the suspended plasmid at -20°C. The DNA is stable for at least one year from date of shipping when stored at -20°C.

**RefSeq:** [NM\\_001007156.1](#), [NP\\_001007157.1](#)

**RefSeq Size:** 3997 bp

**RefSeq ORF:** 1839 bp

**Locus ID:** 4916

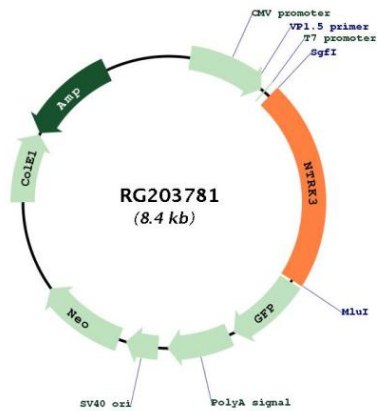
**Cytogenetics:** 15q25.3

**Protein Families:** Druggable Genome, Protein Kinase, Transmembrane

**Protein Pathways:** Neurotrophin signaling pathway

**Gene Summary:** This gene encodes a member of the neurotrophic tyrosine receptor kinase (NTRK) family. This kinase is a membrane-bound receptor that, upon neurotrophin binding, phosphorylates itself and members of the MAPK pathway. Signalling through this kinase leads to cell differentiation and may play a role in the development of proprioceptive neurons that sense body position. Mutations in this gene have been associated with medulloblastomas, secretory breast carcinomas and other cancers. Several transcript variants encoding different isoforms have been found for this gene. [provided by RefSeq, Jul 2011]

**Product images:**



Circular map for RG203781