

Product datasheet for **RG203288**

MAGEA3 (NM_005362) Human Tagged ORF Clone

Product data:

Product Type:	Expression Plasmids
Product Name:	MAGEA3 (NM_005362) Human Tagged ORF Clone
Tag:	TurboGFP
Symbol:	MAGEA3
Synonyms:	CT1.3; HIP8; HYPD; MAGE3; MAGEA6
Mammalian Cell Selection:	Neomycin
Vector:	pCMV6-AC-GFP (PS100010)
E. coli Selection:	Ampicillin (100 ug/mL)
ORF Nucleotide Sequence:	>RG203288 representing NM_005362 Red=Cloning site Blue=ORF Green=Tags(s)

TTTTGTAATACGACTCACTATAGGGCGGCCGGAATTCGTCGACTGGATCCGGTACCGAGGAGATCTGCC
GCC**CGATCGCC**

ATGCCTTTGAGCAGAGGAGTCAGCACTGCAAGCCTGAAGAAGGCCTTGAGGCCCGAGGAGGCCCTGG
GCCTGGTGGGTGCGCAGGCTCCTGCTACTGAGGAGCAGGAGGCTGCCTCCTCCTTCTACTCTAGTTGA
AGTCACCCTGGGGAGGTGCCTGCTGCCGAGTCACCAGATCCTCCCAGAGTCTCAGGGAGCCTCCAGC
CTCCCCACTACCTGAACCTCCTCTGGAGCCAATCCTATGAGGACTCCAGCAACCAAGAAGAGGAGG
GGCCAAGCACCTCCCTGACCTGGAGTCCGAGTCCAAGCAGCACTCAGTAGGAAGTGGCCGAGTTGGT
TCATTTTCTGCTCCTCAAGTATCGAGCCAGGGAGCCGGTCACAAAGGCAGAAATGCTGGGGAGTGTGCTC
GGAAATTGGCAGTATTTCTTCTGTGATCTTCAGCAAAGCTTCCAGTTCCTTGCAGCTGGTCTTTGGCA
TCGAGCTGATGGAAGTGGACCCCATCGGCCACTTGACATCTTTGCCACCTGCCTGGGCCTCTCCTACGA
TGGCCTGCTGGGTGACAATCAGATCATGCCAAGGCAGGCCTCCTGATAATCGTCCTGGCCATAATCGCA
AGAGAGGGCGACTGTGCCCTGAGGAGAAAATCTGGGAGGAGCTGAGTGTGTTAGAGGTGTTGAGGGGA
GGGAAGACAGTATCTTGGGGATCCCAAGAAGCTGCTCACCAACATTTCTGTCAGGAAAACCTACCTGGA
GTACCGGCAGGTCCCGGCAGTATCCTGCATGTTATGAATTCCTGTGGGGTCCAAGGGCCCTCGTTGAA
ACCAGCTATGTGAAAGTCTGCACCATATGGTAAAGATCAGTGGAGGACCTCACATTTCTACCCACCC
TGCATGAGTGGTTTTGAGAGAGGGGAAGAG

ACGCGTACGCGGCCGCTCGAG - GFP Tag - GTTTAA



[View online »](#)

Protein Sequence: >RG203288 representing NM_005362
 Red=Cloning site Green=Tags(s)

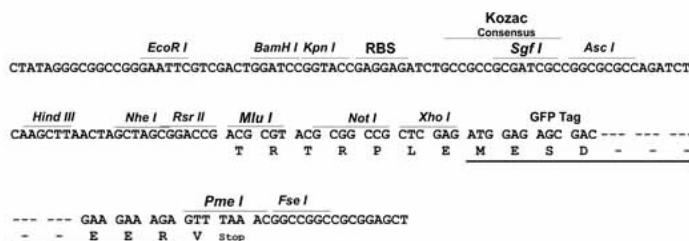
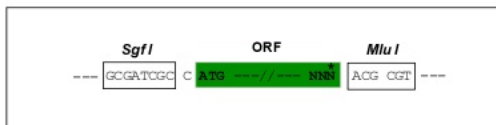
MPLEQRSQHCKPEEGLEARGEALGLVGAQAPATEEQEAASSSTLVEVTLGEVPAAESPPDPSPQSGASS
 LPTTMMNYPLWSQSYEDSSNQEEEGPSTFPDLESEFQAALSRKVAELVHFLLLKYRAREPVTKAEMLGSVV
 GNWQYFFPVIFSKASSSLQLVFGIELMEVDPIGHLIYIFATCLGLSYDGLLDGNQIMPKAGLLIIIVLAIIA
 REGDCAPEEKIWEELSVLEVFEGREDSILGDPKLLTQHFVQENYLEYRQVPGSDPACYEFLWGPRLAVE
 TSYVKVLHHMVKISGGPHISYPPLHEWVLRGEE

TRTRPLE - GFP Tag - V

Restriction Sites: SgfI-MluI

Cloning Scheme:

Cloning sites used for ORF Shuttling:



ACCN: NM_005362

ORF Size: 942 bp

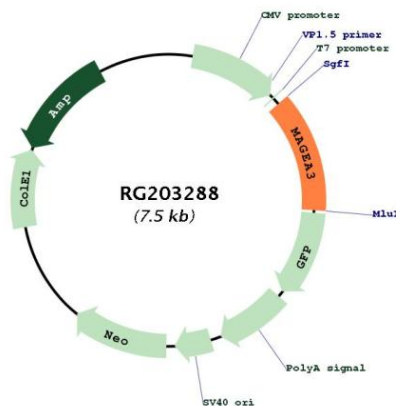
OTI Disclaimer: Due to the inherent nature of this plasmid, standard methods to replicate additional amounts of DNA in E. coli are highly likely to result in mutations and/or rearrangements. Therefore, OriGene does not guarantee the capability to replicate this plasmid DNA. Additional amounts of DNA can be purchased from OriGene with batch-specific, full-sequence verification at a reduced cost. Please contact our customer care team at custsupport@origene.com or by calling 301.340.3188 option 3 for pricing and delivery.

The molecular sequence of this clone aligns with the gene accession number as a point of reference only. However, individual transcript sequences of the same gene can differ through naturally occurring variations (e.g. polymorphisms), each with its own valid existence. This clone is substantially in agreement with the reference, but a complete review of all prevailing variants is recommended prior to use. [More info](#)

OTI Annotation: This clone was engineered to express the complete ORF with an expression tag. Expression varies depending on the nature of the gene.

- Components:** The ORF clone is ion-exchange column purified and shipped in a 2D barcoded Matrix tube containing 10ug of transfection-ready, dried plasmid DNA (reconstitute with 100 ul of water).
- Reconstitution Method:**
1. Centrifuge at 5,000xg for 5min.
 2. Carefully open the tube and add 100ul of sterile water to dissolve the DNA.
 3. Close the tube and incubate for 10 minutes at room temperature.
 4. Briefly vortex the tube and then do a quick spin (less than 5000xg) to concentrate the liquid at the bottom.
 5. Store the suspended plasmid at -20°C. The DNA is stable for at least one year from date of shipping when stored at -20°C.
- RefSeq:** [NM_005362.4](#)
- RefSeq Size:** 1753 bp
- RefSeq ORF:** 945 bp
- Locus ID:** 4102
- UniProt ID:** [P43357](#)
- Cytogenetics:** Xq28
- Gene Summary:** This gene is a member of the MAGEA gene family. The members of this family encode proteins with 50 to 80% sequence identity to each other. The promoters and first exons of the MAGEA genes show considerable variability, suggesting that the existence of this gene family enables the same function to be expressed under different transcriptional controls. The MAGEA genes are clustered at chromosomal location Xq28. They have been implicated in some hereditary disorders, such as dyskeratosis congenita. [provided by RefSeq, Jul 2008]

Product images:



Circular map for RG203288