

## Product datasheet for **RG201073**

### CBR3 (NM\_001236) Human Tagged ORF Clone

#### Product data:

Product Type:	Expression Plasmids
Product Name:	CBR3 (NM_001236) Human Tagged ORF Clone
Tag:	TurboGFP
Symbol:	CBR3
Synonyms:	hCBR3; HEL-S-25; SDR21C2
Mammalian Cell Selection:	Neomycin
Vector:	pCMV6-AC-GFP (PS100010)
E. coli Selection:	Ampicillin (100 ug/mL)
ORF Nucleotide Sequence:	>RG201073 representing NM_001236 Red=Cloning site Blue=ORF Green=Tags(s)

TTTTGTAATACGACTCACTATAGGGCGGCCGGAATTCGTCGACTGGATCCGGTACCGAGGAGATCTGCC  
GCC**CGATCGCC**

ATGTCGTCCTGCAGCCGCGTGCGCTGGTGACCGGGCCAAACAGGGGCATCGGCTTGCCATCGCGCGG  
AACTGTGCCGACAGTTCTCTGGGATGTGGTGCTACCGCGCGGGACGTGGCGCGGGCCAGGCGGCCGT  
GCAGCAGCTGCAGGCGGAGGGCCTGAGCCCGCCTTCCACCAACTGGACATCGACGACTTGCAGAGCATC  
CGCGCCCTGCGCGACTTCTGCGCAAGGAGTACGGGGGGCTCAATGTACTGGTCAACAACCGGCCGTCG  
CCTTCAAGAGTGATGATCCAATGCCCTTTGACATTAAGCTGAGATGACACTGAAGACAAATTTTTTGC  
CACTAGAAACATGTGCAACGAGTTACTGCCGATAATGAAACCTCATGGGAGAGTGGTGAATATCAGTAGT  
TTGCAGTGTTTAAAGGCTTTTGAAGTGCAGTGAAGATCTGCAGGAAAGTTCCACAGTGAAGACTCA  
CAGAAGGAGACCTGGTGGATCTCATGAAAAAGTTTGTGGAGGACACAAAAATGAGGTGCATGAGAGGGA  
AGGCTGGCCCAACTCACCTTATGGGGTGTCCAAGTTGGGGGTACAGTCTTATCGAGGATCCTGGCCAGG  
CGTCTGGATGAGAAGAGGAAAGCTGACAGGATTCTGGTGAATGCGTGCTGCCAGGACAGTGAAGACAG  
ACATGGATGGGAAAGACAGCATCAGGACTGTGGAGGAGGGGGCTGAGACCCTGTCTACTTGGCCCTCTT  
GCCTCCAGATGCCACTGAGCCACAAGGCCAGTTGGTCCATGACAAAGTTGTGCAAAACTGG

**ACGCGT**ACGCGGCCGCTCGAG - GFP Tag - GTTTAA



[View online »](#)

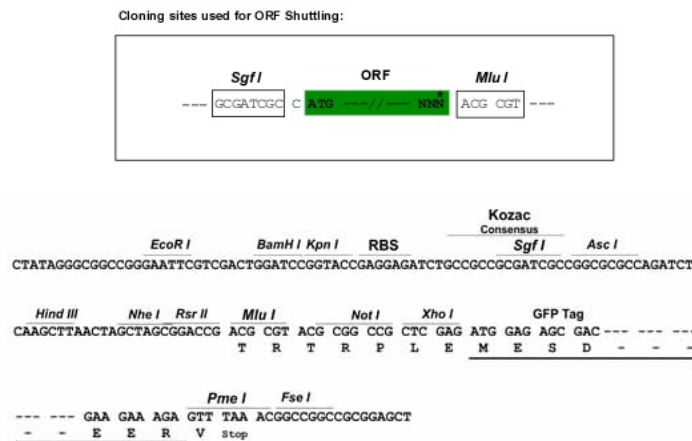
**Protein Sequence:** >RG201073 representing NM\_001236  
Red=Cloning site Green=Tags(s)

MSSCSRVALVTGANRIGLAIARELCRQFSGDVVLTARDVARGQAAVQQLQAEGLSPRFHQLDIDDLQSI  
 RALRDFLRKEYGGLNVLVNNAAVAFKSDDPMPFDIKAEMTLKTNFFATRNMCNELLPIMKPHGRVVNISS  
 LQCLRAFENCSEDLQERFHSETLTEGDLVDMKKFVEDTKNEVHEREGWPNSPYGVSKLGVTVLSRILAR  
 RLDEKRKADRILVNACCPGPVKTDMDGKDSIRTVEEGAETPVYLLALLPPDATEPQQLVHDKVVQNW

TRTRPLE - GFP Tag - V

**Restriction Sites:** SgfI-MluI

**Cloning Scheme:**



**ACCN:** NM\_001236

**ORF Size:** 831 bp

**OTI Disclaimer:** The molecular sequence of this clone aligns with the gene accession number as a point of reference only. However, individual transcript sequences of the same gene can differ through naturally occurring variations (e.g. polymorphisms), each with its own valid existence. This clone is substantially in agreement with the reference, but a complete review of all prevailing variants is recommended prior to use. [More info](#)

**OTI Annotation:** This clone was engineered to express the complete ORF with an expression tag. Expression varies depending on the nature of the gene.

**Components:** The ORF clone is ion-exchange column purified and shipped in a 2D barcoded Matrix tube containing 10ug of transfection-ready, dried plasmid DNA (reconstitute with 100 ul of water).

**Reconstitution Method:**

1. Centrifuge at 5,000xg for 5min.
2. Carefully open the tube and add 100ul of sterile water to dissolve the DNA.
3. Close the tube and incubate for 10 minutes at room temperature.
4. Briefly vortex the tube and then do a quick spin (less than 5000xg) to concentrate the liquid at the bottom.
5. Store the suspended plasmid at -20°C. The DNA is stable for at least one year from date of shipping when stored at -20°C.

**RefSeq:** [NM\\_001236.3](#), [NP\\_001227.1](#)

**RefSeq Size:** 1128 bp

**RefSeq ORF:** 834 bp

**Locus ID:** 874

**UniProt ID:** [O75828](#)

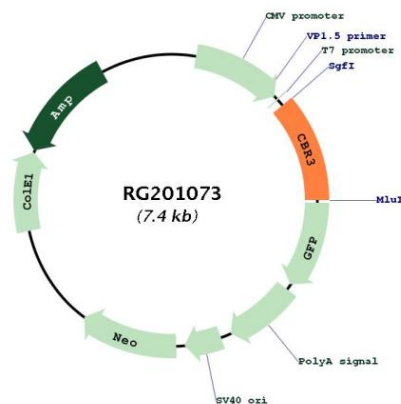
**Cytogenetics:** 21q22.12

**Protein Families:** Druggable Genome

**Protein Pathways:** Arachidonic acid metabolism, Metabolic pathways

**Gene Summary:** Carbonyl reductase 3 catalyzes the reduction of a large number of biologically and pharmacologically active carbonyl compounds to their corresponding alcohols. The enzyme is classified as a monomeric NADPH-dependent oxidoreductase. CBR3 contains three exons spanning 11.2 kilobases and is closely linked to another carbonyl reductase gene - CBR1. [provided by RefSeq, Jul 2008]

## Product images:



Circular map for RG201073