

Product datasheet for **RG200112**

IMP3 (NM_018285) Human Tagged ORF Clone

Product data:

Product Type: Expression Plasmids
Product Name: IMP3 (NM_018285) Human Tagged ORF Clone
Tag: TurboGFP
Symbol: IMP3
Synonyms: BRMS2; C15orf12; MRPS4
Mammalian Cell Selection: Neomycin
Vector: pCMV6-AC-GFP (PS100010)
E. coli Selection: Ampicillin (100 ug/mL)
ORF Nucleotide Sequence: >RG200112 representing NM_018285
 Red=Cloning site Blue=ORF Green=Tags(s)

TTTTGTAATACGACTCACTATAGGGCGGCCGGAATTCGTCGACTGGATCCGGTACCGAGGAGATCTGCC
 GCC**CGATCGCC**

ATGGTGCGGAAGCTTAAGTTCCACGAGCAGAAGCTGCTGAAGCAGGTGGACTTCTGAAGTGGGAGGTCA
 CCGACCACAACCTGCACGAGCTGCGCGTCTGCGCGTTACCGGCTGCAGCGCGGGAGGACTACACGCG
 CTACAACCAGCTGAGCCGTGCCGTGCGTGAGCTGGCGCGCGCCTGCGCGACCTGCCCGAACGCGACCAG
 TTCGCGTGCAGCTTCCGCGCGCTGCTGGACAAGCTGTATGCTCTCGGCTTGGTCCCCACGCGCGGTT
 CGCTGGAGCTCTGCGACTTCGTACGGCCTCGTCTTCTGCCCGCGCCTCCCACCGTCTCCTCAA
 GCTGCGCATGGCGCAGCACCTTCAGGCTGCCGTGGCCTTTGTGGAGCAAGGCACGTACGCGTGGGCCCT
 GACGTGGTTACCGACCCCGCCTTCTTGTACGCGCAGCATGGAGGACTTTGTCACCTGGGTGGACTCGT
 CCAAGATCAAGCGGCACGTGCTAGAGTACAATGAGGAGCGCGATGACTTCGATCTGGAAGCC

AG**CGGACCG**ACGCGTACGCGGCCGCTCGAG - GFP Tag - GTTTAA

Protein Sequence: >RG200112 representing NM_018285
 Red=Cloning site Green=Tags(s)

MVRKLFHEQKLLKQVDFLNWEVTDHNLHELRLRRYRLQRREDYTRYNQLSRAVRELARRLRDLPERDQ
 FRVRASAALLDKLYALGLVPTRGSLELCDFVTASSFCRRRLPTVLLKLRMAQHLQAQAVAVEQGHVRVGP
 DVVTDPAFLVTRSMEDFVTWVDSKIKRHVLEYNEERDDFDLEA

SGP**TRRRLE** - GFP Tag - V

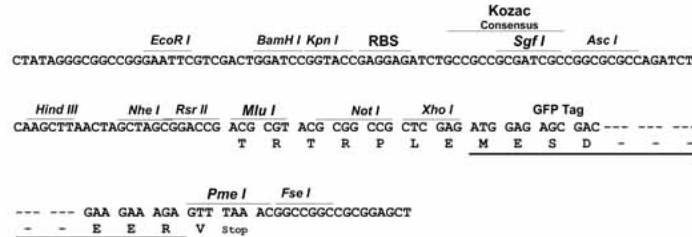
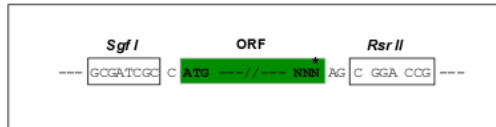
Restriction Sites: Sgfl-RsrII



[View online »](#)

Cloning Scheme:

Cloning sites used for ORF Shuttling:


ACCN: NM_018285

ORF Size: 552 bp

OTI Disclaimer: The molecular sequence of this clone aligns with the gene accession number as a point of reference only. However, individual transcript sequences of the same gene can differ through naturally occurring variations (e.g. polymorphisms), each with its own valid existence. This clone is substantially in agreement with the reference, but a complete review of all prevailing variants is recommended prior to use. [More info](#)

OTI Annotation: This clone was engineered to express the complete ORF with an expression tag. Expression varies depending on the nature of the gene.

Components: The ORF clone is ion-exchange column purified and shipped in a 2D barcoded Matrix tube containing 10ug of transfection-ready, dried plasmid DNA (reconstitute with 100 ul of water).

- Reconstitution Method:**
1. Centrifuge at 5,000xg for 5min.
 2. Carefully open the tube and add 100ul of sterile water to dissolve the DNA.
 3. Close the tube and incubate for 10 minutes at room temperature.
 4. Briefly vortex the tube and then do a quick spin (less than 5000xg) to concentrate the liquid at the bottom.
 5. Store the suspended plasmid at -20°C. The DNA is stable for at least one year from date of shipping when stored at -20°C.

RefSeq: [NM_018285.4](#)
RefSeq Size: 1160 bp

RefSeq ORF: 555 bp

Locus ID: 55272

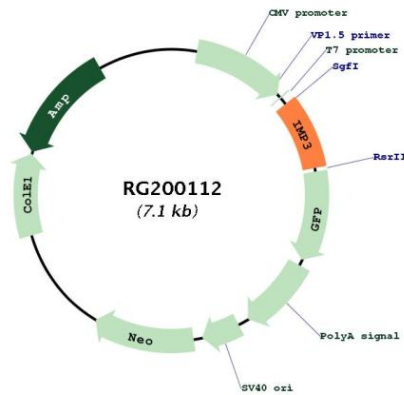
UniProt ID: [Q9NV31](#)

Cytogenetics: 15q24.2

Domains: S4

Gene Summary: This gene encodes the human homolog of the yeast Imp3 protein. The protein localizes to the nucleoli and interacts with the U3 snoRNP complex. The protein contains an S4 domain. [provided by RefSeq, Jul 2008]

Product images:



Circular map for RG200112