

Product datasheet for RC240182

SMARCA2 (NM_001289396) Human Tagged ORF Clone

Product data:

Product Type:	Expression Plasmids
Product Name:	SMARCA2 (NM_001289396) Human Tagged ORF Clone
Tag:	Myc-DDK
Symbol:	SMARCA2
Synonyms:	BAF190; BIS; BRM; hBRM; hSNF2a; NCBRS; SNF2; SNF2L2; SNF2LA; Sth1p; SWI2
Mammalian Cell Selection:	Neomycin
Vector:	pCMV6-Entry (PS100001)
E. coli Selection:	Kanamycin (25 ug/mL)
ORF Nucleotide Sequence:	>RC240182 representing NM_001289396 Red=Cloning site Blue=ORF Green=Tags(s)

TTTTGTAATACGACTCACTATAGGGCGGCCGGAATTCGTCGACTGGATCCGGTACCGAGGAGATCTGCC
GCC**CGATCGCC**

ATGTCCACGCCACAGACCCTGGTGGCATGCCACCCAGGGCCTTCGCCGGGGCCTGGGCCTTCCCCTG
GGCCAATCTTGGGCCTAGTCCAGGACCAGGACCATCCCCAGGTTCCGTCCACAGCATGATGGGGCCAAAG
TCCTGGACCTCCAAGTGTCTCCCATCTATGCCGACGATGGGGTCCACAGACTTCCCACAGGAAGGCATG
CATCAAATGCATAAGCCCATCGATGGTATACATGACAAGGGGATTGTAGAAGACATCCATTGTGGATCCA
TGAAGGGCACTGGTATGCGACCCTCACCCAGGCATGGGCCCTCCCCAGAGTCCAATGGATCAACACAG
CCAAGTTATATGTCACCACACCCATCTCCATTAGGAGCCCCAGAGCACGTCTCCAGCCCTATGTCTGGA
GGAGGCCCAACTCCACCTCAGATGCCACCAAGCCAGCCGGGGGCCCTCATCCCAGGTGATCCGCAGGCCA
TGAGCCAGCCCAACAGAGGTCCCTCACCTTTCAGTCTGTCCAGTGCATCAGCTTCGAGCTCAGATTTT
AGCTTATAAAATGCTGGCCCGAGGCCAGCCCTCCCCGAAACGCTGCAGCTTGCAGTCCAGGGGAAAAGG
ACGTTGCCTGGCTTGAGCAACAACAGCAGCAGCAACAGCAGCAGCAGCAGCAGCAGCAGCAGCAGCAGC
AGCAGCAACAGCAGCCGAGCAGCAGCCGCCGCAACCACAGCAGCAACAACAGCAGCCGGCCCTTGT
TAACTACAACAGACCATCTGGCCCGGGCCGGAGCTGAGCGGCCCGAGCACCCCGCAGAAGCTGCCGGTG
CCCGCCCGGGCGGCCCTCGCCCGGCCCCCGCAGCCGCCGAGCCGCCCGCCGCGCCGAGTGGCCCG
GGCCCTCAGTGGCGCAGCCGGCCCGGGGCGAGCCCTCGCCGTCTCCAGCTGCAGCAGAAGCAGAGCCG
CATCAGCCCCATCCAGAAACCGCAAGGCCTGGACCCCGTGGAAATTCGCAAGAGCGGGAATACAGACTT
CAGGCCCGCATAGCTCATAGGATACAAGAACTGGAAAATCTGCCTGGCTCTTTGCCACCAGATTTAAGAA
CCAAAGCAACCGTGGAACTAAAAGCACTTCGGTTACTCAATTTCCAGCGTCAGCTGAGACAGGAGGTGGT
GGCCTGCATGCGCAGGGACACGACCCTGGAGACGGCTCTCAACTCAAAGCATACAAACGGAGCAAGCGC
CAGACTCTGAGAGAAGCTCGCATGACCGAGAAGCTGGAGAAGCAGCAGAAGATTGAGCAGGAGAGGAAAC
GCCGTGAGAAACACCAGGAATACCTGAACAGTATTTTGAACATGCAAAAAGATTTAAGGAATATCATCG
GTCTGTGGCCGAAAGATCCAGAAGCTCTCAAAGCAGTGGAACCTTGGCATGCCAACACTGAAAGAGAG



[View online »](#)

CAGAAGAAGGAGACAGAGCGGATTGAAAAGGAGAGAATGCGGCGACTGATGGCTGAAGATGAGGAGGGTT
 ATAGAAAAGTATTGATCAAAAGAAAGACAGGCGTTTAGCTTACCTTTTGCAGCAGACCGATGAGTATGT
 AGCCAATCTGACCAATCTGGTTTGGGAGCACAAGCAAGCCAGGCAGCCAAAGAGAAGAAGAAGAGGAGG
 AGGAGGAAGAAGAAGGCTGAGGAGAATGCAGAGGGTGGGAGTCTGCCCTGGGACCGGATGGAGAGCCCA
 TAGATGAGAGCAGCCAGATGAGTGACCTCCCTGTCAAAGTGACTCACACAGAAACCGGCAAGGTTCTGTT
 CGGACCAGAAGCACCCAAAGCAAGTCAGCTGGACGCTGGCTGGAATGAATCCTGGTTATGAAGTTGCC
 CCTAGATCTGACAGTGAAGAGAGTGATTCTGATTATGAGGAAGAGGATGAGGAAGAAGATCCAGTAGGC
 AGGAAACCGAAGAGAAAATACTCCTGGATCCAAATAGCGAAGAAGTTTCTGAGAAGGATGCTAAGCAGAT
 CATTGAGACAGCTAAGCAAGACGTGGATGATGAATACAGCATGCAGTACAGTGCCAGGGGCTCCAGTCC
 TACTACACCGTGGCTCATGCCATCTCGGAGAGGGTGGAGAAAACAGTCTGCCCTCCTAATTAATGGGACCC
 TAAAGCATTACCAGCTCCAGGCGCTGGAATGGATGGTTTCCCTGTATAATAACAACCTGAACGGAATCTT
 AGCCGATGAAATGGGCTTGGAAAGACCATACAGACCATTGCACTCATCACTTATCTGATGGAGCACAAA
 AGACTCAATGGCCCTATCTCATATTGTTCCCTTTGACTCTATCTAACTGGACATATGAATTTGACA
 AATGGGCTCCTTCTGTGGTGAAGATTTCTACAAGGGTACTCCTGCCATGCGTCGCTCCCTTGCCCCCA
 GCTACGGAGTGGCAAATCAATGTCCTTGTACTACTTATGAGTATATTATAAAAGACAAGCACATTCTT
 GCAAAGATTCGGTGGAAATACATGATAGTGACGAAGGCCACCGAATGAAGAATCACCACTGCAAGCTGA
 CTCAGGCTTGAACACTCACTATGTGGCCCCAGAAAGGATCCTCTTGACTGGGACCCCGTGCAGATAA
 GCTCCCTGAACCTGCGGCGCTCCTCAACTTCTCCTCCCAACAATTTTTAAGAGCTGCAGCACATTTGAA
 CAATGGTTCAATGCTCCATTTGCCATGACTGGTGAAGGGTGGACTTAAATGAAGAAGAACTATATTGA
 TCATCAGGCGCTACATAAGGTGTTAAGACATTTTTACTAAGGAGACTGAAGAAAGAAGTTGAATCCCA
 GCTTCCCGAAAAGTGAATATGTGATCAAGTGTGACATGTCAGCTCTGCAGAAGATTCTGTATCGCCAT
 ATGCAAGCCAAGGGGATCCTTCTCACAGATGGTCTGAGAAAGATAAGAAGGGGAAAGGAGGTGCTAAGA
 CACTTATGAACACTATTATGCAGTTGAGAAAAATCTGCAACCACCCATATATGTTTCAGCACATTTGAGGA
 ATCCTTTGCTGAACACTAGGCTATTCAAATGGGGTCAATGGGGCTGAACTGTATCGGGCTCAGGG
 AAGTTTGAGCTGCTTGTATCGTATTCTGCCAAAATTGAGAGCGACTAATCACCGAGTGCTGCTTTTCTGCC
 AGATGACATCTCTCATGACCATCATGGAGGATTATTTGCTTTTTCGAACTTCTTTTACCTACGCTTGA
 TGGCACCACCAAGTCTGAAGATCGTGCTGCTTTGCTGAAGAAATCAATGAACCTGGATCCAGTATTTT
 ATTTTCTGCTGAGCACAAGAGCTGGTGGCCTGGGCTTAAATCTTCAGGCAGCTGATACAGTGGTATCT
 TTGACAGCGACTGGAATCCTCATCAGGATCTGCAGGCCAAGACCGAGCTCACCGCATCGGGCAGCAGAA
 CGAGGTCCGGTACTGAGGCTCTGTACCGTGAACAGCGTGGAGGAAAAGATCCTCGGGCCGCAAAAATAC
 AAGCTGAACGTGGATCAGAAAGTATCCAGGCGGCATGTTTGACAAAAGTCTTCAAGCCACGAGCGGA
 GGGCATTCTGACGGCCATCTTGAGCATGAGGAGGAAAATGAGGAAGAAGATGAAGTACCGGACGATGA
 GACTCTGAACCAATGATTGCTCGACGAGAAGAAGAATTTGACCTTTTTATGCGGATGGACATGGACCGG
 CGGAGGGAAGATGCCCGGAACCCGAAACGGAAGCCCGTTTAAATGGAGGAGGATGAGCTGCCCTCCTGGA
 TCATTAAGGATGACGCTGAAGTAGAAAGGCTCACCTGTGAAGAAGAGGAGGAGAAAATATTTGGGAGGGG
 GTCCCGCCAGCGCGTACAGTGGACTACAGTGACGCCCTCACGGAGAAGCAGTGGCTAAGGGCCATCGAA
 GACGGCAATTTGGAGGAAATGGAAGAGGAAGTACGGCTTAAAGAAGCGAAAAAGACGAAGAATGTGGATA
 AAGATCCTGCAAAAAGAAGATGTGAAAAAGCTAAGAAGAGAAGAGGCCCGCTCCCGCTGAGAACTGTC
 ACCAAATCCCCCAAACGACAAAAGCAGATGAACGCTATCATCGATACTGTGATAAACTACAAAGATAGG
 TGTAACTGGAGAAGGTGCCAGTAATTCAGTTGGAATAGAAGGAAACAGTTTCAGGGCAGCAGCTCA
 GTGAAGTCTTCATTAGTTACCTCAAGGAAAAGATTACAGAATACTATGAATTAATTAGGAAGCCAGT
 GGATTTCAAAAAAATAAAGGAAAGGATTCGTAATCATAAGTACCGGAGCCTAGGCGACCTGGAGAAGGAT
 GTCATGCTTCTGTGACAAAGCTCAGACGTTCAACCTGGAGGGATCCCAGATCTATGAAGACTCCATCG
 TCTTACAGTCAGTGTAAAGAGTCCCGGCAGAAAATTGCCAAAGAGGAAGAGAGTGAAGATGAAAGCAA
 TGAAGAGGAGGAAGAGGAAGATGAAGAAGAGTCAAGTCCGAGGCAAAAATCAGTCAAGGTGAAAATTAAG
 CTCAATAAAAAAGATGACAAAGGCCGGGACAAAGGAAAGGCAAGAAAAGGCCAAATCGAGGAAAAGCCA
 AACCTGTAGTGAGCGATTTTGACAGCGATGAGGAGCAGGATGAACGTGAACAGTCAAGAAGGAAAGTGGAC
 GGATGATGAG

ACGCGTACGCGGCCGCTCGAGCAGAACTCATCTCAGAAGAGGATCTGGCAGCAAATGATATCCTGGATT
 ACAAGGATGACGACGATAAGGTTTAA

Protein Sequence: >RC240182 representing NM_001289396
 Red=Cloning site Green=Tags(s)

MSTPTDPGAMPHPGSPGPGSPGPILGSPGPGSPGSPGSHMMGSPGPPSVSHPMPTMGSTDFPQEGM
 HQMHKPIDGIHDKGIVEDIHCGSMKGTMRPPHPGMGPPQSPMDQHSQGYMSPHPSPGLGAPEHVSSPMSG
 GGTPPQMPPSQPGALIPGDPQAMSQPNRGPSPFSPVQLHLQRAQILAYKMLARGQPLPETLQLAVQGRK
 TLPGLQQQQQQQQQQQQQQQQQQQQQQPPQPTQQQQQPALVNYNRPSPGPEL SGPSTPQKLPV
 PAPGGRPSAPAAAAQPPAAAVPGPSVQPAPGQPSPVLQLQQKQSRISPIQKQGLDPVEILQEREYRL
 QARIAHRIQELENLPGSLPPDLRTKATVELKALRLLNFQRQLRQEVVACMRDDTLETALNSKAYKRSKR
 QTLREARMTEKLEKQKQIEQERKRRQKHQEYLSILQHAKDFKEYHRSVAGKIQLKSKAVATWHANTERE
 QKKETERIEKERMRLMAEDEEGYRKLIDQKKDRRLAYLLQQTDEYVANL TNLVWEHKQAQAAKEKKRRR
 RRRKKAENAEGGESALGPDGEPIDESSQMSDLPVKVTHTETGKVLFGPEAPKASQLDAWLEMNPGYEVA
 PRSDSESDSYEEDEEEESSRQETEEKILLDPNSEEVSEKDAKQI IETAKQDVDEYSMQYSARGSQS
 YYTVAHAISERVEKQSALLINGTLKHYQLQGLEWMVSLYNNNLNGILADEMGLGKTIQTIALITYLMEHK
 RLNGPYLIIIVPLSTLSNWTYEFDKWAPSVVKISYKGPAMRRSLVPQLRSGKFNVLTTTYEYIIKDKHIL
 AKIRWKYMIIVDEGHRMKNHHCKLTQVLNTHYVAPRRILLTGTPLNKLPPELWALLNLFLLPTIFKSCSTFE
 QWFNAPFAMTGERVDLNEETILIIIRLHKVLRPFLRRLKKEVESQLPEKVEYVIKCDMSALQKILYRH
 MQAKGILLTDGSEKDKKGGAKTLMNTIMQLRKICNHPYMFQHIIEESFAEHLGYSNGVINGAELYRASG
 KFELLDRIPLKLRATNHRVLLFCQMTSLMTIMEDYFAFRNFLYLRLDGTGKSEDRAALLKFNPEGSQYF
 IFLLSTRAGGLNLQAADTVVIFDSDWNPHQDLQAQDRAHRIGQQNEVRVLRCLTVNSVEEKILAAKY
 KLNVDQKVIQAGMFDQKSSSHERRAFLQAILHEEENEDEEVPDDELNQMIARREEFDLFMRMDMDR
 RREDARNPKRKRPRLMEDELPSWIIKDDAEVERLTCEEEEEKIFGRGSRQRDQVSDALTEKQWLRRAIE
 DGNLEEMEEVRLKRRRRRNVKDPKEDVEKAKRRRGRPPAEKLSNPPLTKQMNAIIDTVINYKDR
 CNVEKVPNSQLEIEGNSGRQLSEVFIQLPSRKELPEYYELIRKPVDFKKIKERIRNHKYRSLGDLEKD
 VMLLCHNAQTFNLEGSQIYEDSIVLQSVFKSARQKIAKEEESSEDSNEEEEEDEEESSEAKSVKVIK
 LNKDDKGRDKGKGRPNRGKAKPVVSDFDSDDEEQDEREQSESGTDDE

TRTRPLEQKLISEEDLAANDILDYKDDDDKV

Chromatograms: https://cdn.origene.com/chromatograms/mk8017_c04.zip

Restriction Sites: Sgfl-MluI

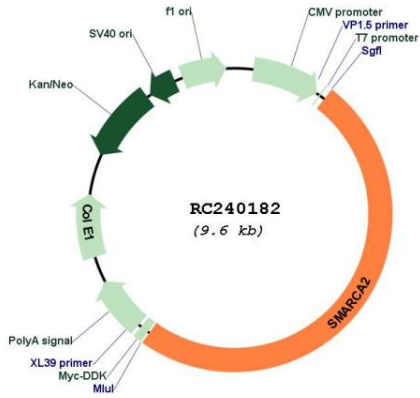
Cloning Scheme:



ACCN: NM_001289396

ORF Size:	4770 bp
OTI Disclaimer:	The molecular sequence of this clone aligns with the gene accession number as a point of reference only. However, individual transcript sequences of the same gene can differ through naturally occurring variations (e.g. polymorphisms), each with its own valid existence. This clone is substantially in agreement with the reference, but a complete review of all prevailing variants is recommended prior to use. More info
OTI Annotation:	This clone was engineered to express the complete ORF with an expression tag. Expression varies depending on the nature of the gene.
Components:	The ORF clone is ion-exchange column purified and shipped in a 2D barcoded Matrix tube containing 10ug of transfection-ready, dried plasmid DNA (reconstitute with 100 ul of water).
Reconstitution Method:	<ol style="list-style-type: none">1. Centrifuge at 5,000xg for 5min.2. Carefully open the tube and add 100ul of sterile water to dissolve the DNA.3. Close the tube and incubate for 10 minutes at room temperature.4. Briefly vortex the tube and then do a quick spin (less than 5000xg) to concentrate the liquid at the bottom.5. Store the suspended plasmid at -20°C. The DNA is stable for at least one year from date of shipping when stored at -20°C.
RefSeq:	NM_001289396.1 , NP_001276325.1
RefSeq Size:	5879 bp
RefSeq ORF:	4773 bp
Locus ID:	6595
UniProt ID:	P51531
Cytogenetics:	9p24.3
Protein Families:	Druggable Genome
MW:	181.3 kDa
Gene Summary:	The protein encoded by this gene is a member of the SWI/SNF family of proteins and is highly similar to the brahma protein of Drosophila. Members of this family have helicase and ATPase activities and are thought to regulate transcription of certain genes by altering the chromatin structure around those genes. The encoded protein is part of the large ATP-dependent chromatin remodeling complex SNF/SWI, which is required for transcriptional activation of genes normally repressed by chromatin. Alternatively spliced transcript variants encoding different isoforms have been found for this gene, which contains a trinucleotide repeat (CAG) length polymorphism. [provided by RefSeq, Jan 2014]

Product images:



Circular map for RC240182