

Product datasheet for RC239995

delta 2 Catenin (CTNND2) (NM_001288715) Human Tagged ORF Clone

Product data:

Product Type:	Expression Plasmids
Product Name:	delta 2 Catenin (CTNND2) (NM_001288715) Human Tagged ORF Clone
Tag:	Myc-DDK
Symbol:	CTNND2
Synonyms:	GT24; NPRAP
Vector:	pCMV6-Entry (PS100001)
E. coli Selection:	Kanamycin (25 ug/mL)
Cell Selection:	Neomycin
ORF Nucleotide Sequence:	>RC239995 representing NM_001288715 Red=Cloning site Blue=ORF Green=Tags(s)

TTTTGTAATACGACTCACTATAGGGCGGCCGGGAATTCGTCGACTGGATCCGGTACCGAGGAGATCTGCC
GCCGGATCGCC

ATGAGCAGCATGAGTTCAGCAGAAGAGCAGTTTCAGTGGCAGTCACAAGATGGTCAAAAAGATATCGAAG
ATGAGCTTACAACAGGTCTCGAGCTGGTGGACTCCTGTATTAGGTCACTACAGGAATCAGGAATACTTGA
CCCACAGGATTATTCTACAGGTGAAAGGCCAGCTGCTCTCCAGAGTGCACCTCAGCTCAATTCAAA
CCTGAAGGGTCTTTCCAGTATCCGGCCAGCTACCATAGCAACCAGACCCTGGCCCTGGGGAAACCACCC
CTTCACAGCTCCCGGCCCGAGGCACACAAGCCCGAGCTACGGGCCAGAGCTTCAGCCAGGGCACGACCAG
CCGCGCCGGCCACCTGGCGGGGCCGAGCCCGCCGCGCCGCGCCGCGCCGCGCCGCGGGAGCCGTTCCGG
CCCAGCTGGGCAGCGCCTTCCACCTGCCCGACGCGCCGCGCCGCGCCGCGCCGCGCCGCGCTCTACTACT
CCAGCTCCACGCTGCCGCGCCGCGCGGGGCTCCCGCTGGCCGCGCCCAAGGCGGTTCCGCCAC
CAAGCTGCAGCGCGCGGCTCGGCCCGGAGGGCGCCACCTACGCCGCGCCGCGGGCTCCTCGCCCAAG
CAGTCGCCAGCCGCTGGCCAAGTCTACAGCACCAGCTCGCCATCAACATCGTGTCTCGGCC
GCCTGTCCCGATCCGCGTGACCTCGCCCCACCGTGACGTCACCATCTCTCTCGCCATCCACCA
GCTGAGCTCCACCATCGGCACGTACGCCACCCTGTGCCACCAAGCGCCTGGTCCACGGTCCGAGCAG
TACAGCAAGCACTCGCAGGAGCTGTATGCCACGGCCACCCTCCAGAGGCCGGGCAGCCTGGCAGCTGGTT
CCCAGCCTCATAACAGCAGCCAGCATGGGCACCTGGGCCAGAGTTGCGGGCCCTGCAGTCCCCAGAACA
CCACATAGATCCCATCTATGAAGACCGGTCTATCAGAAGCCCCCTATGAGGAGTCTCAGCCAGAGCCAG
GGGACCTCTGCCGCCAGCACACCCGGCACCTACCGCACGAGCACAGCCCCATCTTCCCTGGTGTG
ACTCCGTCCTTGCAGCGCACAGGCAGCCAGCACGGCCACAGAATGCCGCGCGGCCACCTCCAGAG
GGCCAGCTATGCCGCGGCCAGCCTCCAATTACGCGGACCCCTACCGACAGCTGCAGTATTGCCCTCT
GTTGAGTCTCCATACAGCAAATCCGGCCCTGCTCTCCGCTGAAGGCACCTTGCCAGGTCCTCCGTC
TTGATAGCATTAGAAAAGATCCAGAGAATTTGGATGGAGAGACCCGGAAGTCCGGAAGTGATTAGAT
GTTGCAGCACCAGTTTCCCTCGTCCAGTCTAACCGCGGACGCTACTTGAACACCTCTGTTTTGGAGAC
AACAAAATTAAGCCGAGATAAGGAGACAAGGAGGCATCCAGCTCCTGGTGGACCTGTTGGATCATCGGA



View online »

TGACCGAAGTCCACCGTAGTGCCTGTGGAGCTCTGAGAAACCTGGTGTATGGGAAGGCCAACGATGATAA
 CAAAATTGCCCTGAAAACTGTGGTGGCATCCCAGCACTGGTGGAGTTACTCCGCAAGACGACTGACCTG
 GAGATCCGGGAGCTGGTCACAGGAGTCTTTGGAACTCTCCTCATGCGATGCACTCAAAATGCCAATCA
 TCCAGGATGCCCTAGCAGTACTGACCAACGCGGTGATTATCCCCACTCAGGCTGGGAAAATTCGCCTCT
 TCAGGATGATCGGAAAATACAGCTGCATTATCACAGGTGCTGCGTAAACCCACCGGGTGCCTAAGGAAT
 GTTAGTTCGGCCGGAGAGGAGGCCCGCAGAAGGATGAGAGAGTGTGATGGGCTTACGGATGCCTTGTCTGT
 ACGTGATCCAGTCTGCGCTGGGGAGCAGTGCATGATAGCAAGACCGTTGAAAACTGTGTGTGCATTTT
 AAGGAACCTCTCGTACCGCTGGCGGCAGAAACGCTCTCAGGGACAGCACATGGGCACGGACGAGCTGGAC
 GGGCTACTCTGTGGCGAGGCAATGGCAAGGATGCTGAGAGCTCTGGGTGCTGGGGCAAGAAGAAGAAGA
 AAAAGAAATCCCAAGATCAGTGGGATGGAGTAGGACCTCTCCAGACTGTGCTGAACCACCAAAAAGGGAT
 CCAGATGCTGTGGCACCATCAATAGTCAAACCCTACCTCACACTGCTCTCTGAGTGTCAAATCCAGAC
 ACGCTGGAAGGGCGGCAGGCGCCTGCAGAACTTGGCTGCAGGGAGCTGGAAGTGGTCAGTATATATCC
 GAGCCGCTGTCCGAAAAGAGAAAGCCCTGCCATCCTCGTGGAGCTGCTCCGAATAGACAATGACCGTGT
 GGTGTGCGCGGTGGCCACTGCGCTGCGGAACATGGCCTTGACGCTCAGAATAAGGAGCTCATCGGCAA
 TACGCCATGCGAGACCTAGTCCACAGGCTTCCAGGAGGAACAACAGCAACAACACTGCAAGCAAGGCCA
 TGTCCGATGACACAGTGCAGCTGTCTGCTGCACACTGCACGAAGTGATTACCAAGAACATGGAGAACGC
 CAAGGCCTTACGGGATGCCGGTGGCATCGAGAAGTTGGTCCGCATCTCCAAAAGCAAAGGAGATAAACAC
 TCTCCAAAAGTGGTCAAGGCTGCATCTCAGGCTCTCAACAGCATGTGGCAGTACCAGATCTGAGGAGTC
 TCTACAAAAGGATGGATGGTACAATACCACTTTGTAGCCTCGTCTTCAACCATCGAGAGGGACCGGCA
 AAGGCCCTACTCTCTCCCGCACGCCCTCCATCTCCCCTGTGCGCGTGTCTCCCAACAACCGCTCAGCA
 AGTGCCCCAGCTTACCTCGGAAAATGATCAGCCTCAAAGAAAGGAAAACAGACTACGAGTGCACCGGCA
 GCAACGCCACCTACCACGGAGCTAAAGGCGAACACACTCCAGGAAAGATGCCATGACAGCTCAAACAC
 TGGAAATTTCACTTTGTATAGGAATTTTATGGTGCGCCGCTGAAGACATCAAACACAACCTCAGTTTCA
 GCACAGCCAGTCCCACAGGAGCCAGCAGAAAAGATTACGAGACCTACCAGCCATTTTCAAGAAATCCACAA
 GAAATACGATGAGTCTTCTCGAGGACCAGTCCACCATCGCCCTCCCGCCAGCGAGTACACCATGCA
 CCTGGGTCTCAAGTCCACCGGCAACTACGTTGACTTCTACTCAGCTGCCCGTCCCTACAGTGAACGAAC
 TATGAAACGAGCCACTACCCGGCTCCCGGACTCCTGGGTG

AGCGGACCGACGCGTACGCGGCCGCTCGAGCAGAAACTCATCTCAGAAGAGGATCTGGCAGCAAATGATATCC
 TGGATTACAAGGATGACGACGATAAGGTTTAA

Protein Sequence:

>RC239995 representing NM_001288715
 Red=Cloning site Green=Tags(s)

MSSMSSAEEQFQWQSQDQKDI EDEL TTGLELVDSCIRSLQESGILDPQDYSTGERPSSLQSALQLNSK
 PEGSFQYPASYHSNQTALGETTPSQLPARGTQARATGQSFSGTTSRAGHLAGEPEPAPPPPPPPREPFA
 PSLGSAFHLPDAPPAALYYSSSTLPAPRGGSPLAAPQGGSPTKLQRGSAPEGATYAAPRGSSPK
 QSPSRLAKSYSTSSPINIVVSSAGLSPIRVTSPPTVQSTISSSPIHQLSSTIGTYATLSPTKRLVHASEQ
 YSKHSQELYATLQRPGLAAGSRASYSSQHGLGPELRALQSPHHIDPIYEDRVYQKPPMRSLQSQ
 GDPLPPAHTGTYRTSTAPSSPGVDSVPLQRTGSHGPQNAAAATFQRASYAAGPASNYADPYRQLQYCP
 VESPYKSGPALPPEGLARSPSIDSIQKDPREFGWRDPPELPEVIQMLQHQPFSVQSNAAAYLQHLCFGD
 NIKIAEIRRQGGIQLLVDLLDHMRTEVHRSACGALRNLVYGKANDDNKIALKNCGGIPALVRLLRKTTDL
 EIRELVTGVLWNLSSCDALKMPIIQDALAVLTNAVIIPHSGWENSPLQDDRKIQLHSSQVLRNATGCLR
 VSSAGEEARRRMRECDGLTDALLYVIQALGSSEIDSKTVENCVCILRNL SYRLAAETSQGHMGTDEL
 GLLCGEANGKDAESSGCWGKKKKKKSQDQWDGVPDCAEPPKGIQMLWHPSIVKPYLTLLSECSNP
 TLEGAAGALQNLAAAGSWKWSVYIRAAVRKEKGLPILVELLRIDNDRVVCATATLRNMLDVRNKEIGK
 YAMRDLVHRLPGNNSNNTASKAMSDDTVTAVCCTLHEVITKNMENAKALRDAGGIEKLVGISKSGDKH
 SPKVVKAASQVLNSMWQYRDLRSLYKKGWSQYHFVASSSTIERDRQRPYSSSRTPSISPVVSPNNRSA
 SAPASPREMISLKERKTDYECTGSNATYHGAKGEHTSRKDAMTAQNTGISTLYRNSYGAPAEDIKHNQVS
 AQPVPQEPSRKDYETYQPFQNSTRYNDESFFEDQVHHRPPASEYTMHLGLKSTGNYVDFYSAARPYSELN
 YETSHYPASPSWV

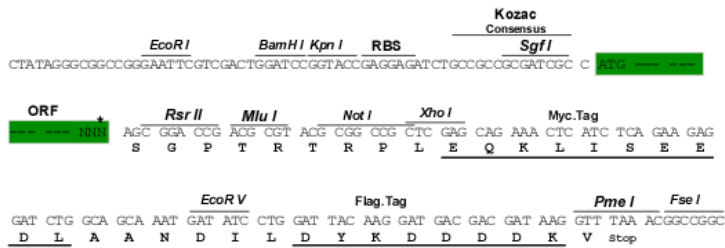
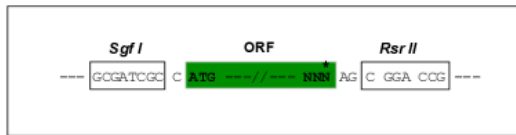
SGPTRTRPLEQKLI SEEDLAANDILDYKDDDDKV

Restriction Sites:

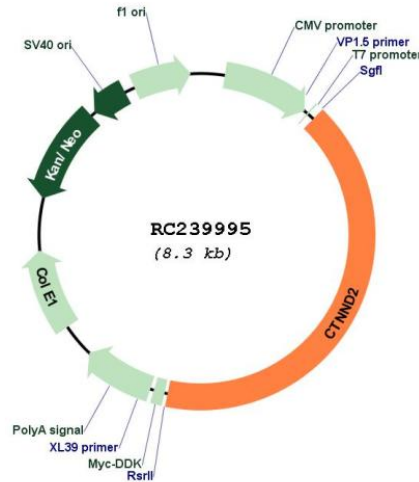
SgfI-RsrII

Cloning Scheme:

Cloning sites used for ORF Shuttling:



* The last codon before the Stop codon of the ORF

Plasmid Map:


ACCN: NM_001288715

ORF Size: 3402 bp

OTI Disclaimer: The molecular sequence of this clone aligns with the gene accession number as a point of reference only. However, individual transcript sequences of the same gene can differ through naturally occurring variations (e.g. polymorphisms), each with its own valid existence. This clone is substantially in agreement with the reference, but a complete review of all prevailing variants is recommended prior to use. [More info](#)

OTI Annotation: This clone was engineered to express the complete ORF with an expression tag. Expression varies depending on the nature of the gene.

Components: The ORF clone is ion-exchange column purified and shipped in a 2D barcoded Matrix tube containing 10ug of transfection-ready, dried plasmid DNA (reconstitute with 100 ul of water).

Reconstitution Method:

1. Centrifuge at 5,000xg for 5min.
2. Carefully open the tube and add 100ul of sterile water to dissolve the DNA.
3. Close the tube and incubate for 10 minutes at room temperature.
4. Briefly vortex the tube and then do a quick spin (less than 5000xg) to concentrate the liquid at the bottom.
5. Store the suspended plasmid at -20°C. The DNA is stable for at least one year from date of shipping when stored at -20°C.

RefSeq: [NM_001288715.1](#), [NP_001275644.1](#)

RefSeq Size: 5289 bp

RefSeq ORF: 3405 bp

Locus ID: 1501

UniProt ID: [Q9UQB3](#)

Cytogenetics: 5p15.2

Protein Families: Druggable Genome

MW: 123.5 kDa

Gene Summary: This gene encodes an adhesive junction associated protein of the armadillo/beta-catenin superfamily and is implicated in brain and eye development and cancer formation. The protein encoded by this gene promotes the disruption of E-cadherin based adherens junction to favor cell spreading upon stimulation by hepatocyte growth factor. This gene is overexpressed in prostate adenocarcinomas and is associated with decreased expression of tumor suppressor E-cadherin in this tissue. This gene resides in a region of the short arm of chromosome 5 that is deleted in Cri du Chat syndrome. Alternative splicing results in multiple transcript variants encoding different isoforms. [provided by RefSeq, Dec 2013]