

Product datasheet for RC235296

UTY (NM_001258252) Human Tagged ORF Clone

Product data:

Product Type:	Expression Plasmids
Product Name:	UTY (NM_001258252) Human Tagged ORF Clone
Tag:	Myc-DDK
Symbol:	UTY
Synonyms:	KDM6AL; KDM6C; UTY1
Vector:	pCMV6-Entry (PS100001)
E. coli Selection:	Kanamycin (25 ug/mL)
Cell Selection:	Neomycin
ORF Nucleotide Sequence:	>RC235296 representing NM_001258252 Red=Cloning site Blue=ORF Green=Tags(s)

TTTTGTAATACGACTCACTATAGGGCGCCGGAATTCGTCGACTGGATCCGGTACCGAGGAGATCTGCC
GCC**CGATCGCC**

ATGAAATCCTGCGCAGTGTGCTCACTACCGCCGCTGTTGCCTTCGGTGATGAGGCAAAGAAAATGGCGG
AAGGAAAAGCGAGCCGCGAGAGTGAAGAGGAGTCTGTTAGCCTGACAGTCGAGGAAAGGGAGGCGCTTGG
TGGCATGGACAGCCGTCTCTTCGGGTTCTGAGGCTTCATGAAGATGGCGCCAGAACGAAGACCCTACTA
GGCAAGGCTGTTGCTGTACGAATCTTTAATCTTAAAAGCTGAAGGAAAAGTGGAGTCTGACTTCTTTT
GCCAATTAGGTCACTTCAACCTCTTGTGGAAAGATTATTCAAAAGCATTATCTGCATATCAGAGATTA
CAGTTTACAGGCTGACTACTGGAAGAATGCTGCGTTTTATATGGCCTTGGTTTGGTCTACTTCTACTAC
AATGCATTTTCATTGGGCAATTAAGCATTTCAAGATGCCTTTATGTTGACCCGAGCTTTTGTGCGAGCCA
AGGAAATTCATTTACGACTTGGGCTCATGTTCAAAGTGAACACAGACTACAAGCTAGTTTAAAGCATTT
TCAGTTAGCCTTGATTGACTGTAATCCATGTACTTTGTCCAATGCTGAAATTCATTTTCATTTGCCAT
TTGTATGAAACCCAGAGGAAGTATCATTCTGCAAAGGAGGCATATGAACAACCTTTGCAGACAGAAAACC
TTCTGCACAAGTAAAAGCAACTGTATTGCAACAGTTAGTTGGATGCATCATAATATGGATCTAGTAGG
AGACAAAGCCACAAAGGAAAGCTATGCTATTCAGTATCTCCAAAAGCTTTGGAGGCAGATCCTAATTCT
GGCCAATCGTGGTATTTTCTTGGAAAGTGTATTCAAGTATTGGGAAAAGTTCAGGATGCCTTTATATCTT
ACAGGCAATCTATTGATAAATCAGAAGCAAGTGCAGATACATGGTGTTCATAGGTGTGTGTATCAGCA
GCAAAATCAGCCTATGGATGCTTTACAGGCATATATTTGTGCTGTACAATTGGACCATGGGCATGCCGCA
GCCTGGATGGACCTAGGTACTCTCTATGAATCCTGCAATCAACCTCAAGATGCCATTAATGCTACCTAA
ATGCAGCTAGAAGCAAACGTTGTAGTAATACCTCTACGCTTGCTGCAAGAATTAATTTCTACAGGCTCA
GTTGTGTAACCTCCACAAAGTAGTCTACAGAATAAACTAAATTACTTCTAGTATTGAGGAGGCATGG
AGCCTACCAATCCCGCAGAGCTTACCTCCAGGCAGGGTCCATGAACACAGCACAGCAGAAATGGTTCTG
ATAACTGGAATGGTGGCCAGAGCTTTTCATCATCCAGTACAGCAAGTTTATTCGTTGTGTTTACACC
ACAGAAATACAGCACTTGAACAACCTGCGAGCAATAGAGATAATTTAAATCCAGCACAGAAGCATCAG
CTGGAACAGTTAGAAAGTCAGTTTGTCTTAATGCAGCAATGAGACACAAAGAAGTTGCTCAGGTACGAA



[View online »](#)

CTACTGGAATTCATAACGGGGCCATAACTGATTCATCACTGCCTACAAACTCTGTCTCTAATCGACAACC
ACATGGTGCTCTGACCAGAGTATCTAGCGTCTCTCAGCCTGGAGTTCGCCTGCTTGTGTTGAAAACTT
TTGTCCAGTGGAGCTTTTTCTGCAGGCTGTATTCTTGTGGCAGTCAAAAAATTCTAGGAAGTACAGACA
CTATCTTGCTAGGCAGTAATTGTATAGCAGGAAGTAAAGTAAATGGAAATGTGCCTTACCTGCAGCAAAA
TACACACTCTACCTCATAATCATACAGACCTGAACAGCAGCACAGAAGAGCCATGGAGAAAACAGCTA
TCTAACTCCGCTCAGGGGCTTCATAAAAGTCAGAGTTCATGTTTGTGAGGACCTAATGAAGAACAACCTC
TGTTTTCACTGGGTCAGCCAGTATCACCAGGCACTAGCAGTGGTATTAAGAAGGCGAATGAACATCT
CACTCTGCCTAGTAATTCAGTACCACAGGGGATGCTGACAGTCACCTCTCCTGTCACTACTGCTACCTCA
GGTGGACAACAAGGCATTATGTTTACCAAAGAGAGCAAGCCTTCAAAAAATAGATCCTTGGTGCCTGAAA
CAAGCAGGCATACTGGAGACACATCTAATGGCTGTGCTGATGTCAAGGGACTTTCTAATCATGTTTATCA
GTTGATAGCAGATGCTGTTTCCAGTCTAACCATGGAGATTCACCAAAATTTATTAATTGCAGACAATCCT
CAGCTCTCTGCTTGTGATTGGAAAAGCCAATGGCAATGTGGTACTGGAACCTGTGACAAAAGTGAATA
ATATTCACCCAGCTGTTACAAAAGACTGATCATTCTGTGCTCTTCCACCTCTTCCAGCATTCCAC
AGCAACACCTTCTCTAAATCCACTGAGCAGAGAAGCATAAACAGTGTACCAGCCTAACAGTCTCAC
AGTGGATTACACACAGTCAATGGAGAGGGGCTGGGAAGTCACAGAGCTTACAAAAGTAGACCTGCCTT
TAGCTAGCCACAGATCTACTTCTCAGATTTACCATCAATGTGCTGCTATATGCCCCAGTTCAACAGA
AGTTCTGAAAGCATGCAGGAATCCAGGTAAAAATGGCTTGTCTAATAGCTGCATTTTGTAGATAAATGT
CCACCTCCAAGACCACCAACTTACCATACCCACCCTTGCCAAAGGACAAGTTGAATCCACCCACACCTA
GTATTTACTTGGAAAAATAACGTGATGCTTTCTTCTCCATTACATCAATTTGTACAAAATCCAAAAA
CCCTGTTACAGTAATACGTGGCCTTGTGGAGCTTAAATTAGATCTTGGACTTTTCTCTACAAAACT
TTGGTAGAAGCTAACAAATGAACATATGGTAGAAGTGGAGCAGTTCGCAACCAGCAGATGAAAAT
GGGATCCCACTGGAACAAAGAAAATCTGGCGTTGTGAAAGCAATAGATCTCATACTACAATTGCCAAATA
CGCACAATACCAGGCTTCTCCTCCAGGAATCATTGAGAGAAGAAAATGAGAAAAGAACACAACACAAA
GATCATTAGATAACGAATCCACATCTTCCAGAGAATTCTGGAAGGAGAAGGAAAGGACCTTTTAAAAACA
TAAAAATTTGGGACCAACATTGACCTCTCTGATAACAAAAGTGGAAAGTTCAGATTACATGAACTGACTAA
ACTTCTGCTTTTTGCGCGTGTGGTGTGAGCAGGAAATCTTCTAACCCATGTTGGGCATACCATTCTGGGC
ATGAATACAGTACAACCTGTATATGAAAGTTCCAGGGAGTCGGACACCAGGTACCAAGAAAATAACAAT
TCTGCTCTGTTAACATAAATATTGGTCCAGGAGATTGGAATGGTTTGTGACCTGAAGATTATTGGGG
TGTTCTGAATGACTTCTGTGAAAAAATAATTTGAATTTTTAATGAGTCTTGGTGGCCCAACCTTGAA
GATCTTTATGAAGCAAATGTCCCTGTGTATAGATTTATTCAGCGACCTGGAGATTTGGTCTGGATAAATG
CAGGCACTGTGCATTGGGTTCAAGCTGTTGGCTGGTGAATAACATTGCCTGGAATGTTGGTCCACTTAC
AGCCTGCCAGTATAAATTGGCAGTGAACGGTATGAATGGAACAAATTGAAAAGTGTGAAGTCAACAGTA
CCCATGGTGCATCTTTCCTGGAATATGGCACGAAATATCAAAGTCTCAGATCCAAAGCTTTTTGAAATGA
TTAAGTATTGCTTTTGAATTTCTGAAGCAATATCAGACATTGAGAGAAGCTCTTGTGAGCAGGAGAAA
AGAGGTTATATGGCATGGGCGGACAAAATGATGAACCAGCTCATTACTGTAGCATTGTGAGGTGGAGGTT
TTAATCTGCTTTTTGTCACTAATGAAAGCAATACTCAAAAACTACATAGTACATTGCCATGATTGTG
CACGAAAAACAAGCAAAGTTTGGAAAATTTGTGGTGTGCGAACAGTACAAAATGGAGGACCTAATCCA
AGTTTATGATCAATTTACTAGCTCTTTCATTATCATCTCATCT

ACGCGTACGCGGCGCTCGAGCAGAACTCATCTCAGAAGAGGATCTGGCAGCAAATGATATCCTGGATT
ACAAGGATGACGACGATAAGGTTTAA

Protein Sequence:

>RC235296 representing NM_001258252
 Red=Cloning site Green=Tags(s)

MKSCAVSLTTAAVAFGDEAKKMAEGKASRESEEEVSLSL TVEEREALGGMSRSLFGFVRLHEDGARTKLL
 GKAVRCYESLILKAEGKVESDFCQLGHFNLLLEDYSKALSAYQRYYSLQADYWKNAFLYGLGLVYFY
 NAFHWAIAKAFQDVLVYDPSFCRAKEIHLRLGLMFKVNTDYKSSLKHFQLALIDCNPCTLSNAEQFHIAH
 LYETQRKYHSAKEAYEQLLQTEENLPAQVKATVLQQLGWMHHNMDLVGDKATKESYAIQYLQKSLEADPNS
 GQSWYFLGRCYSSIGKVQDAFISYRQSIDKSEASADTWCSIGVL YQQNQPMDALQAYICAVQLDHGHAA
 AWMDLGTLYESCNQPQDAIKCYLNAARSKRCSNTSTLAARIKFLQAQLCNLPQSSLQNKTKLLPSIEEAW
 SLPPIPAELTSRQGAMNTAQONGSDNWNGGQSLSHHPVQQVYSLCLTPQKLQHLEQLRANRDNLNPQKHKQ
 LEQLESQFVLMQMRHKEVAQVRTTGIHNGAITDSSLPTNSVSNRQPHGALTRVSSVSQPGVRPACVEKL
 LSSGAFSAGCIPCGTSKILGSTDITLLGSNCIAGSESNGNVPYLQONHTLPHNHTDLNSSTEERPWRKQL
 SNSAQGLHKSQSCLSGPNEEQPLFSTGSAQYHQATSTGIKKANEHLTLPNSVSPQGDADSHLSCHTATS
 GGQQGIMFTKESKPSKNRSLVPETSRHTGDT SNGCADVKGLSNHVHQLIADAVSSPNHGDSPLLADNP
 QLSALLIGKANGVGTGTC DKVNNIHPAVHTKTDHVSASSPSSAISTATPSPKSTEQRSINSVTSLSNSPH
 SGLHTVNGEGLGKSQSSTKVDLPLASHRSTSQILPSMSVSI CPSSTEVLKACRNP GKNGLSNSCILLDKC
 PPPRPPTSPYPLPKDKLNPPTPSIYLENKRDAFFPPLHQFCTNPKNPVTIRGLAGALKLDLGLFSTKT
 LVEANNEHMEVVRTQLLPADENWDPTGTKKIWRCESNRSHTTIAKYAQYQASSFQESLREENEKRTQHK
 DHSNDESTSENSGRRRKGPFKTIKFGTNIDLSDNKKWKLQLHELTKLPFAFARVVSAGNLLTHVGHITLG
 MNTVQLYMKVPGSRTPGHQENNFCSVININIGPGDCEWFVVPEDYWGVLNDFCEKNNLFLMSSWWPNLE
 DLYEANVPVYRFIQRPGDLVWINAGTVHWVQAVGWCNNIAWNVGPLTACQYKLAVERYEWNKLSVKSPV
 PMVHL SWNMARNIKVSDPKLFEMIKYCLLKILKQYQTLREALVAAGKEVIWHGRTNDEPAHYCSICEVEV
 FNLLFVTNESNTQKTYIVHCHDCARKTSKSL ENFVVLEQYKMEDLIQVYDQFTLALSLSSSS

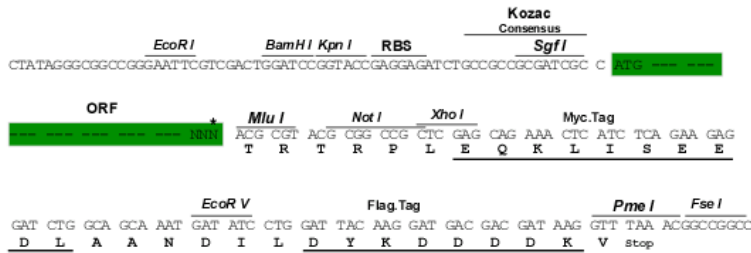
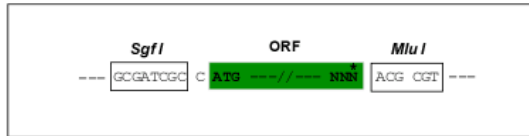
TRTRPLEQKLISEEDLAANDILDYKDDDDKV

Restriction Sites:

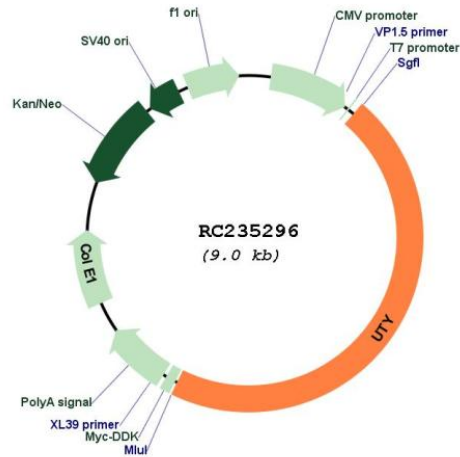
SgfI-MluI

Cloning Scheme:

Cloning sites used for ORF Shuttling:



* The last codon before the Stop codon of the ORF

Plasmid Map:


ACCN: NM_001258252

ORF Size: 4176 bp

OTI Disclaimer: The molecular sequence of this clone aligns with the gene accession number as a point of reference only. However, individual transcript sequences of the same gene can differ through naturally occurring variations (e.g. polymorphisms), each with its own valid existence. This clone is substantially in agreement with the reference, but a complete review of all prevailing variants is recommended prior to use. [More info](#)

OTI Annotation: This clone was engineered to express the complete ORF with an expression tag. Expression varies depending on the nature of the gene.

Components: The ORF clone is ion-exchange column purified and shipped in a 2D barcoded Matrix tube containing 10ug of transfection-ready, dried plasmid DNA (reconstitute with 100 ul of water).

Reconstitution Method:

1. Centrifuge at 5,000xg for 5min.
2. Carefully open the tube and add 100ul of sterile water to dissolve the DNA.
3. Close the tube and incubate for 10 minutes at room temperature.
4. Briefly vortex the tube and then do a quick spin (less than 5000xg) to concentrate the liquid at the bottom.
5. Store the suspended plasmid at -20°C. The DNA is stable for at least one year from date of shipping when stored at -20°C.

RefSeq: [NM_001258252.1](#), [NP_001245181.1](#)

RefSeq Size: 6661 bp

RefSeq ORF: 4179 bp

Locus ID: 7404

UniProt ID: [O14607](#)

Cytogenetics: Yq11.221

Protein Families: Transmembrane

MW: 154.9 kDa

Gene Summary: This gene encodes a protein containing tetratricopeptide repeats which are thought to be involved in protein-protein interactions. The encoded protein is also a minor histocompatibility antigen which may induce graft rejection of male stem cell grafts. A large number of alternatively spliced transcripts have been observed for this gene, but the full length nature of some of these variants has not been determined. [provided by RefSeq, Apr 2012]