

Product datasheet for **RC231143**

Myeloid leukemia factor 1 (MLF1) (NM_001195432) Human Tagged ORF Clone

Product data:

Product Type:	Expression Plasmids
Product Name:	Myeloid leukemia factor 1 (MLF1) (NM_001195432) Human Tagged ORF Clone
Tag:	Myc-DDK
Symbol:	Myeloid leukemia factor 1
Mammalian Cell Selection:	Neomycin
Vector:	pCMV6-Entry (PS100001)
E. coli Selection:	Kanamycin (25 ug/mL)
ORF Nucleotide Sequence:	>RC231143 representing NM_001195432 Red=Cloning site Blue=ORF Green=Tags(s)

TTTTGTAATACGACTCACTATAGGGCGGCCGGAATTCGTCGACTGGATCCGGTACCGAGGAGATCTGCC
GCC**CGATCGCC**

ATGTTAAAAGAAGTTCTTCAGAGAGAAGGAAAATCATACAAGTCAGAACTCTGATGTACATTA AAAAAG
CAAGAGCATCAGAGAATAAGTTAAGTGAGTCCATTCTTGACACCCGAGAAAATATGCGACAGATGATAAG
AAGTTTTTCTGAACCTTTGGAAGAGACTTGCTCAGTATCTCTGATGGTAGAGGGAGAGCTCATAATCGT
AGAGGACATAATGATGGTGAAGATTCTTTGACTGCAACGAGTTGTTCTCTTGTCCTTTTGGCGATTTTG
GTGGTATGCATACAGATGTCAGCTCTTTCCAGACAATGGACCAAATGGTGTCAAATATGAGAACTATAT
GCAGAAATTAGAAAGAACTTCGGTCAACTTTCAGTGGATCCAAATGGACATTCATTTTGTCTCTCCTCA
GTTATGACTTATTCCAAAATAGGAGATGAACCGCCAAAGGTTTTTCAGGCCTCAACTCAAACCTCGTCGAG
CTCCAGGAGGAATAAAGGAAACCAGGAAAGCAATGAGAGATTCTGACAGTGGACTAGAAAAATGGCTAT
TGGTCATCATATCCATGACCGAGCTCATGTCAATAAAAAGTCAAAGAACAAGAAGACTGGAGATGAAGAG
GTCAACCAGGAGTTCATCAATATGAATGAAAGTGATGCTCATGCTTTTGATGAGGAGTGGCAAAGTGAGG
TTTTGAAGTACAAACCAGGACGACACAATCTAGGAAACTAGAATGAGAAGTGTGGCCATGAGAATCC
TGGCTCCCGAAGCTTAAAAGAAGGGAGAAACCTCAACAAAGTCCAGCCATTGAACATGGAAGGAGATCA
AATGTTTTGGGGACAACTCCACATCAAAGGCTCATCTGTGAAAAGCAACAAAAA

ACGCGTACGCGGCCGCTCGAGCAGAACTCATCTCAGAAGAGGATCTGGCAGCAAATGATATCCTGGATT
ACAAGGATGACGACGATAAGGTTTAA



Protein Sequence: >RC231143 representing NM_001195432
Red=Cloning site Green=Tags(s)

MLKEVLQREGKSYKSETLMYIKKARASENKLSEILAHRENMRQMIRSFSEPFGRDLLISIDGRGRAHNR
 RGHNDGEDSLTATSCSLVPFGDFGGMHTDVSSFQTMDQMVSNMRNYMQLERNFGQLSVDPNGHSFCSS
 VMTYSKIGDEPPKVFQASTQTRRAPGGIKETRKAMRSDSDGLEKMAIGHHIDHRAHVIKKSKNKKTGDEE
 VNQEFINMNESDAHAFDEEWQSEVLKYKPGRHNLGNTRMRMSVGHENPGSRELKRREKPPQSPAIEHGRRS
 NVLGDKLHIKGSYKSNKK

TRTRPLEQKLISEEDLAANDILDYKDDDDKV

Chromatograms: https://cdn.origene.com/chromatograms/mk8050_e03.zip

Restriction Sites: SgfI-MluI

Cloning Scheme:

Cloning sites used for ORF Shuttling:



* The last codon before the Stop codon of the ORF

ACCN: NM_001195432

ORF Size: 897 bp

OTI Disclaimer: The molecular sequence of this clone aligns with the gene accession number as a point of reference only. However, individual transcript sequences of the same gene can differ through naturally occurring variations (e.g. polymorphisms), each with its own valid existence. This clone is substantially in agreement with the reference, but a complete review of all prevailing variants is recommended prior to use. [More info](#)

OTI Annotation: This clone was engineered to express the complete ORF with an expression tag. Expression varies depending on the nature of the gene.

Components: The ORF clone is ion-exchange column purified and shipped in a 2D barcoded Matrix tube containing 10ug of transfection-ready, dried plasmid DNA (reconstitute with 100 ul of water).

Reconstitution Method:

1. Centrifuge at 5,000xg for 5min.
2. Carefully open the tube and add 100ul of sterile water to dissolve the DNA.
3. Close the tube and incubate for 10 minutes at room temperature.
4. Briefly vortex the tube and then do a quick spin (less than 5000xg) to concentrate the liquid at the bottom.
5. Store the suspended plasmid at -20°C. The DNA is stable for at least one year from date of shipping when stored at -20°C.

RefSeq: [NM_001195432.2](#)

RefSeq ORF: 777 bp

Locus ID: 4291

UniProt ID: [P58340](#)

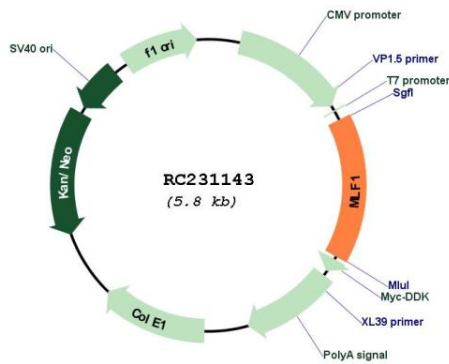
Cytogenetics: 3q25.32

Protein Families: Druggable Genome

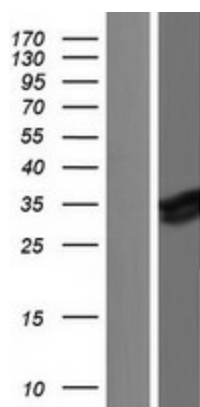
MW: 34.3 kDa

Gene Summary: This gene encodes an oncoprotein which is thought to play a role in the phenotypic determination of hemopoetic cells. Translocations between this gene and nucleophosmin have been associated with myelodysplastic syndrome and acute myeloid leukemia. Multiple transcript variants encoding different isoforms have been found for this gene. [provided by RefSeq, Sep 2010]

Product images:



Circular map for RC231143



Western blot validation of overexpression lysate (Cat# [LY434142]) using anti-DDK antibody (Cat# [TA50011-100]). Left: Cell lysates from untransfected HEK293T cells; Right: Cell lysates from HEK293T cells transfected with RC231143 using transfection reagent MegaTran 2.0 (Cat# [TT210002]).