

## Product datasheet for RC231047

### Myeloid leukemia factor 1 (MLF1) (NM\_001195433) Human Tagged ORF Clone

#### Product data:

**Product Type:** Expression Plasmids  
**Product Name:** Myeloid leukemia factor 1 (MLF1) (NM\_001195433) Human Tagged ORF Clone  
**Tag:** Myc-DDK  
**Symbol:** Myeloid leukemia factor 1  
**Mammalian Cell Selection:** Neomycin  
**Vector:** pCMV6-Entry (PS100001)  
**E. coli Selection:** Kanamycin (25 ug/mL)  
**ORF Nucleotide Sequence:** >RC231047 representing NM\_001195433  
 Red=Cloning site Blue=ORF Green=Tags(s)

TTTTGTAATACGACTCACTATAGGGCGCCGGGAATTCGTCGACTGGATCCGGTACCGAGGAGATCTGCC  
 GCC**CGATCGCC**

ATGCGACAGATGATAAGAAGTTTTCTGAACCCTTTGGAAGAGACTTGCTCAGTATCTCTGATGGTAGAG  
 GGAGAGCTCATAATCGTAGAGGACATAATGATGGTGAAGATTCCTTGACTCATAACAGATGTCAGCTCTTT  
 CCAGACAATGGACCAATGGTGTCAAATATGAGAACTATATGCAGAAATTAGAAAGAACTTCATAAAG  
 GAAACCAGGAAAGCAATGAGAGATTCTGACAGTGGACTAGAAAAATGGCTATTGGTCATCATATCCATG  
 ACCGAGCTCATGTCATTAAGAAAGTCAAAGAACAAGAAGACTGGAGATGAAGAGGTCAACCGAGGTTTCAT  
 CAATATGAATGAAAGTGATGCTCATGCTTTTGTGAGGAGTGGCAAAGTGAAGTTTTGAAGTACAACCA  
 GGACGACACAATCTAGGAAACACTAGAATGAGAAGTGTGGCCATGAGAATCCTGGCTCCCGAGAACTTA  
 AAAGAAGGGAGAAACCTCAACAAAGTCCAGCCATTGAACATGGAAGGAGATCAAATGTTTTGGGGACAA  
 ACTCCACATCAAAGGCTCATCTGTGAAAAGCAACAAAAA

**ACGCGT**ACGCGGCCGCTCGAGCAGAACTCATCTCAGAAGAGGATCTGGCAGCAATGATATCCTGGATT  
 ACAAGGATGACGACGATAAGGTTTAA

**Protein Sequence:** >RC231047 representing NM\_001195433  
 Red=Cloning site Green=Tags(s)

MRQMIRSFSEPFGRDLLSISDGRGRAHNRGRHNDGEDSLTHTDVSSFQTMQMVSNMRNYMQKLERNFIK  
 ETRKAMRDSDSLKMAIGHHIHDAHVIKSKNKKTGDEEVNQEFINMNESDAHAFDEEWQSEVLKYKP  
 GRHNLGNTRMRSVGHENPGSRELKRREKPPQSPAIEHGRRSNVLGDKLHIKSSVKSNKK

**TR**TRPLEQKLISEEDLAANDILDYKDDDDKV

**Chromatograms:** [https://cdn.origene.com/chromatograms/ja1460\\_c10.zip](https://cdn.origene.com/chromatograms/ja1460_c10.zip)



[View online »](#)

**Restriction Sites:** SgfI-MluI

**Cloning Scheme:**



**ACCN:** NM\_001195433

**ORF Size:** 600 bp

**OTI Disclaimer:** The molecular sequence of this clone aligns with the gene accession number as a point of reference only. However, individual transcript sequences of the same gene can differ through naturally occurring variations (e.g. polymorphisms), each with its own valid existence. This clone is substantially in agreement with the reference, but a complete review of all prevailing variants is recommended prior to use. [More info](#)

**OTI Annotation:** This clone was engineered to express the complete ORF with an expression tag. Expression varies depending on the nature of the gene.

**Components:** The ORF clone is ion-exchange column purified and shipped in a 2D barcoded Matrix tube containing 10ug of transfection-ready, dried plasmid DNA (reconstitute with 100 ul of water).

**Reconstitution Method:**

1. Centrifuge at 5,000xg for 5min.
2. Carefully open the tube and add 100ul of sterile water to dissolve the DNA.
3. Close the tube and incubate for 10 minutes at room temperature.
4. Briefly vortex the tube and then do a quick spin (less than 5000xg) to concentrate the liquid at the bottom.
5. Store the suspended plasmid at -20°C. The DNA is stable for at least one year from date of shipping when stored at -20°C.

**RefSeq:** [NM\\_001195433.2](#)

**RefSeq ORF:** 603 bp

**Locus ID:** 4291

**UniProt ID:** [P58340](#)

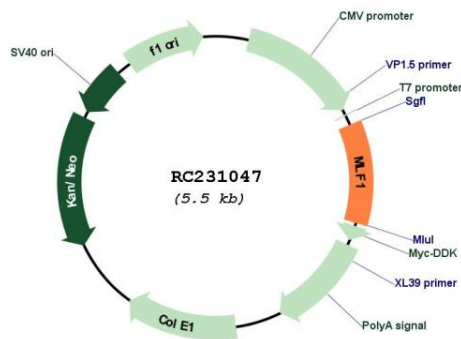
**Cytogenetics:** 3q25.32

**Protein Families:** Druggable Genome

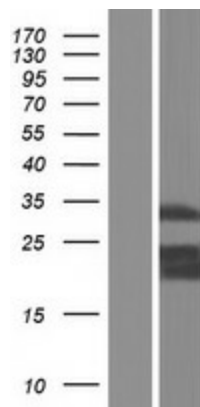
**MW:** 23.6 kDa

**Gene Summary:** This gene encodes an oncoprotein which is thought to play a role in the phenotypic determination of hemopoetic cells. Translocations between this gene and nucleophosmin have been associated with myelodysplastic syndrome and acute myeloid leukemia. Multiple transcript variants encoding different isoforms have been found for this gene. [provided by RefSeq, Sep 2010]

**Product images:**



Circular map for RC231047



Western blot validation of overexpression lysate (Cat# [LY434046]) using anti-DDK antibody (Cat# [TA50011-100]). Left: Cell lysates from untransfected HEK293T cells; Right: Cell lysates from HEK293T cells transfected with RC231047 using transfection reagent MegaTran 2.0 (Cat# [TT210002]).