

## Product datasheet for **RC230265**

### PPP2R1B (NM\_001177562) Human Tagged ORF Clone

#### Product data:

Product Type:	Expression Plasmids
Product Name:	PPP2R1B (NM_001177562) Human Tagged ORF Clone
Tag:	Myc-DDK
Symbol:	PPP2R1B
Synonyms:	PP2A-Abeta; PR65B
Mammalian Cell Selection:	Neomycin
Vector:	pCMV6-Entry (PS100001)
E. coli Selection:	Kanamycin (25 ug/mL)



[View online »](#)

**ORF Nucleotide Sequence:**

>RC230265 representing NM\_001177562  
 Red=Cloning site Blue=ORF Green=Tags(s)

TTTTGTAATACGACTCACTATAGGGCGGCCGGAATTCGTCGACTGGATCCGGTACCGAGGAGATCTGCC  
 GCC**CGGATCGCC**

ATGGCGGGCGCATCAGAGCTCGGGACCGCCAGGAGCAGCGGGTGGAGATGGAGATGATTTCGCTATACC  
 CGATCGCGGTTTTAATCGACGAGCTCCGCAATGAAGACGTGCAGCTCCGACTCAACAGTATTAAGAAGTT  
 ATCAACAATTGCCCTAGCACTTGGAGTAGAAAAGACCCGAAGTGAATTGTTGCCATTTCTTACAGATACA  
 ATTTATGATGAAGATGAGGTACTATTAGCTCTTCTGCTGAGCAGCTGGGAAATTTCACTGGCCTAGTGGGAG  
 GTCCTGACTTTGCCACTGTCTGCTGCCTCCTTTGGAAAATCTGGCAACTGTGGAAGAGACTGTTGTTCCG  
 TGACAAGGCTGTGGAGTCCCTGAGACAGATCTCCAGGAGCATACTCCTGTTGCTCTGGAAGCTTATTTT  
 GTACCTCTGGTGAACGCTTAGCAAGTGGGATTGGTTCACCTCTCGCACATCTGCATGTGGTTTGTTC  
 GCGTTTGTCTATCCAGGGCATCAATGCTGTTAAAGCAGAAATCAGACAGCAATTCGGTCTTGTGCTC  
 AGATGACACACCAATGGTACGACGTGCTGCTGCTTCAAATTTGGTGAATTTGCAAAAGTTTGGAAATTA  
 GACAGTGTGAAAAGTGAATTTGTTCCACTGTCTACTAGCTTAGCTTCAGATGAACAGGATTACAGTGCGCC  
 TCCTTGCTGTGGAAGCTTGTGTCAGTATTGCCAGTATTGTCTCAGGATGACCTTGAGACTTTGGTGTAT  
 GCCTACACTTCGACAAGCAGCAGAAGATAAATCTTGGCGGTTCCGCTATATGGTGGCTGACAGATTTTCA  
 GAGCTCCAGAAAGCCATGGGTCTAAAAACACCCTAAATGACCTCATCCCCGCCTTTCAGAACCTACTTA  
 AAGACTGTGAAGTGAAGTCCGGGCAGCTGCTGCCACAAAGTAAAAGAAGTGGTGAGAAGTGGCCAT  
 TGAAGATAGAGAGACCATAATTATGAATCAAATCTGCCTTATAAAAGTGTCTGACGTTGTTTGAAT  
 ATCATCTCCAATTTGGATTGTGTAATGAAGTATTGGAATCCGTCAGCTCTCTCAGTCTCTCCTTCCTG  
 CCATAGTGGAGCTGGCAGAAGATGCCAAATGGAGGGTCCGCTGGCCATCATTGAGTATATGCCGCTGCT  
 GGCAGGCCAGCTGGGTGTGGAATTCCTTGTATGAAAAGCTGAATTCCTTATGTATGGCTTGGCTCGTGGAC  
 CATGTATACGCCATCCGAGAAGCTGCCACCAACACCTCATGAAACTAGTTCAGAAGTTTGGTACAGAGT  
 GGGCCAAAATACTATTGTTCCCAAAGTGTAGTAATGGCAAATGATCCTAATTACTTGCATAGAATGAC  
 CACTTTATTCTGCATTAATGCACTGTCTGAGGCCTGTGGTCCAGGAAATACTACTAAGCAAATGCTGCC  
 ATCGTATTAATAATGGCAGGAGACCAAGTAGCAAATGTTTCGCTTCAATGTGGCAAATCTCTACAAAAGA  
 TTGGACCAATTCTAGATACCAATGCTTTACAGGGAGAAGTGAAGCCAGTACTACAGAAGTTAGGTCAAGA  
 TGAAGACATGGATGTCAAATACTTTGCACAGGAAGCTATAAGTGTCTTGCATTGGCA

**ACGCGT**ACGCGGCCGCTCGAGCAGAAACTCATCTCAGAAGAGGATCTGGCAGCAAATGATATCCTGGATT  
 ACAAGGATGACGACGATAAGGTTTAA

**Protein Sequence:**

>RC230265 representing NM\_001177562  
 Red=Cloning site Green=Tags(s)

MAGASELGTGPGAAGGDGDSL YPIAVL IDELRNEDVQLRLNSIKKLSIALALGVERTRSELLPFLDT  
 IYDEDEVLLALAEQLGNFTGLVGGPDFAHCLLPLENLATVEETVVRDKAVESLRQISQEHTPVALEAYF  
 VPLVKRLASGDWFTSRTSACGLFSVCYPRASNAVKAIEIRQQFRSLCSDDTPMVRRAAASKLGEFAKVLEL  
 DSVKSEIVPLFTSLASDEQDSVRLLAVEACVSIQQLSQDDLETLVMPTLRQAAEDKSWRVRYMADRFS  
 ELQKAMGPKITLNDLIPAFQNLKDCAEVRAAAAHKVKELGENLPIDRETIIMNQILPYIKCPDVRNLN  
 IISNLDVCVNEVIGIRLSQSLPAIVELAEADAKWRVRLAIEYMPLLAGQLGVEFFDEKLNLCMAWLVD  
 HVYAIIEAATNNLMKLVQKFGTEWAQNTIVPKVLMANDPNYLHRMTTLFCINALSEACQGEITTKQMLP  
 IVLKMGADQVANVRFNVAKSLQKIGPIILD TNALQGEVKPVLQKLQDEDMVKYFAQEASVLLALA

**TR**TRPLEQKLI SEEDLAANDILDYKDDDDKV

**Chromatograms:**

[https://cdn.origene.com/chromatograms/mk8067\\_b02.zip](https://cdn.origene.com/chromatograms/mk8067_b02.zip)

**Restriction Sites:**

Sgfl-MluI

**Cloning Scheme:**


**ACCN:** NM\_001177562

**ORF Size:** 1668 bp

**OTI Disclaimer:** The molecular sequence of this clone aligns with the gene accession number as a point of reference only. However, individual transcript sequences of the same gene can differ through naturally occurring variations (e.g. polymorphisms), each with its own valid existence. This clone is substantially in agreement with the reference, but a complete review of all prevailing variants is recommended prior to use. [More info](#)

**OTI Annotation:** This clone was engineered to express the complete ORF with an expression tag. Expression varies depending on the nature of the gene.

**Components:** The ORF clone is ion-exchange column purified and shipped in a 2D barcoded Matrix tube containing 10ug of transfection-ready, dried plasmid DNA (reconstitute with 100 ul of water).

- Reconstitution Method:**
1. Centrifuge at 5,000xg for 5min.
  2. Carefully open the tube and add 100ul of sterile water to dissolve the DNA.
  3. Close the tube and incubate for 10 minutes at room temperature.
  4. Briefly vortex the tube and then do a quick spin (less than 5000xg) to concentrate the liquid at the bottom.
  5. Store the suspended plasmid at -20°C. The DNA is stable for at least one year from date of shipping when stored at -20°C.

**RefSeq:** [NM\\_001177562.2](#)

**RefSeq ORF:** 1671 bp

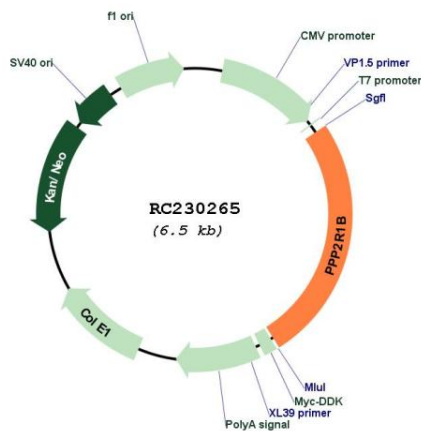
**Locus ID:** 5519

**UniProt ID:** [P30154](#)

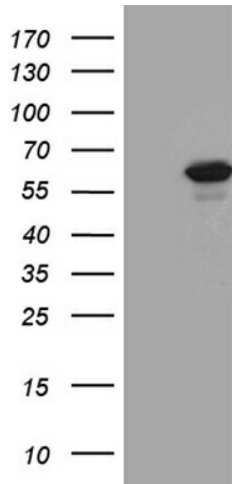
**Cytogenetics:** 11q23.1

<b>Protein Families:</b>	Druggable Genome, Phosphatase, Transcription Factors
<b>Protein Pathways:</b>	Long-term depression, Oocyte meiosis, TGF-beta signaling pathway, Tight junction, Wnt signaling pathway
<b>MW:</b>	61.8 kDa
<b>Gene Summary:</b>	This gene encodes a constant regulatory subunit of protein phosphatase 2. Protein phosphatase 2 is one of the four major Ser/Thr phosphatases, and it is implicated in the negative control of cell growth and division. It consists of a common heteromeric core enzyme, which is composed of a catalytic subunit and a constant regulatory subunit, that associates with a variety of regulatory subunits. The constant regulatory subunit A serves as a scaffolding molecule to coordinate the assembly of the catalytic subunit and a variable regulatory B subunit. This gene encodes a beta isoform of the constant regulatory subunit A. Mutations in this gene have been associated with some lung and colon cancers. Alternatively spliced transcript variants have been described. [provided by RefSeq, Apr 2010]

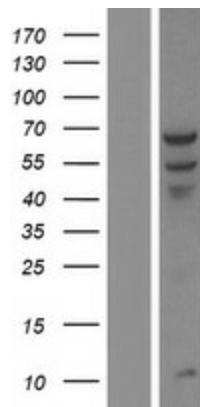
### Product images:



Circular map for RC230265



HEK293T cells were transfected with the pCMV6-ENTRY control (Cat# [PS100001], Left lane) or pCMV6-ENTRY PPP2R1B (Cat# RC230265, Right lane) cDNA for 48 hrs and lysed. Equivalent amounts of cell lysates (5 ug per lane) were separated by SDS-PAGE and immunoblotted with anti-PPP2R1B (Cat# [TA811413])(1:2000). Positive lysates [LY433265] (100ug) and [LC433265] (20ug) can be purchased separately from OriGene.



Western blot validation of overexpression lysate (Cat# [LY433265]) using anti-DDK antibody (Cat# [TA50011-100]). Left: Cell lysates from untransfected HEK293T cells; Right: Cell lysates from HEK293T cells transfected with RC230265 using transfection reagent MegaTran 2.0 (Cat# [TT210002]).