

Product datasheet for **RC230231**

HCK (NM_001172130) Human Tagged ORF Clone

Product data:

Product Type:	Expression Plasmids
Product Name:	HCK (NM_001172130) Human Tagged ORF Clone
Tag:	Myc-DDK
Symbol:	HCK
Synonyms:	JTK9; p59Hck; p61Hck
Mammalian Cell Selection:	Neomycin
Vector:	pCMV6-Entry (PS100001)
E. coli Selection:	Kanamycin (25 ug/mL)



[View online »](#)

ORF Nucleotide Sequence:

>RC230231 representing NM_001172130
 Red=Cloning site Blue=ORF Green=Tags(s)

TTTTGTAATACGACTCACTATAGGGCGGCCGGGAATTCGTCGACTGGATCCGGTACCGAGGAGATCTGCC
 GCC**CGCATCGCC**

CTGGGGGGCGCTCAAGCTGCGAGGATCCGGGCTGCCCGGAGACGAGGAGCGGGCGCCAGGATGGGGT
 GCATGAAGTCCAAGTTCCTCCAGGTCGGAGGCAATACATTCTCAAAAACAGAAACAGCCAGCCACACA
 CTGTCCCTGTGTACGTGCCGGATCCACATCCACCATCAAGCCGGGGCCTAATAGCCACAACAGCAACACA
 CCAGGAATCAGGGAGGGCTCTGAGGACATCATCGTGGTTGCCCTGTATGATTACGAGGCCATTACCACG
 AAGACCTCAGTTCCAGAAGGGGACCAGATGGTGGTCTAGAGGAATCCGGGGAGTGGTGAAGGCTCG
 ATCCCTGGCCACCCGGAAGGAGGGCTACATCCCAAGCAACTATGTCGCCCGCTTGACTCTCTGGAGACA
 GAGGAGTGGTTTTCAAGGGCATCAGCCGGAAGGACGCAGAGCGCAACTGCTGGCTCCCGCAACATGC
 TGGGCTCCTTCATGATCCGGGATAGCGAGACCTAAAGGAAGCTACTCTTTGTCGTGCGAGACTACGA
 CCCTCGCAGGGAGATACCGTGAACATTACAAGATCCGGACCCTGGACAACGGGGGCTTCTACATATCC
 CCCGAAGCACCTTCAGCACTCTGCAGGAGCTGGTGGACCACTACAAGAAGGGGAACGACGGGCTCTGCC
 AGAAACTGTCCGTGCCCTGCATGTCTTCAAGCCCCAGAAGCCTTGGGAGAAAGATGCCTGGGAGATCCC
 TCGGGAATCCCTCAAGCTGGAGAAGAACTTGGAGCTGGGCAGTTTGGGGAAGTCTGGATGGCCACCTAC
 AACAAAGCACACCAAGGTGGCAGTGAAGACGATGAAGCCAGGGAGCATGTCGGTGGAGGCCTTCTGGCAG
 AGGCCAACGTGATGAAAACCTCTGCAGCATGACAAGCTGGTCAAACCTCATGCGGTGGTCAACAAGGAGCC
 CATCTACATCATCAGGAGTTTATGGCCAAAGGAAGCTTGGTGGACTTTCTGAAAAGTGTAGGGGCAGC
 AAGCAGCCATTGCCAAAACCTCATTGACTTCTCAGCCAGATTGCAGAAGGCATGGCCCTCATCGAGCAGA
 GGAATACATCCACCGAGACCTCCGAGCTGCCAACATCTTGGTCTCTGCATCCCTGGTGTGTAAGATTGC
 TGACTTTGGCCTGGCCCGGGTCATTGAGGACAACGAGTACACGGCTCGGGAAGGGGCAAGTTCGCCATC
 AAGTGGACAGCTCCTGAAGCCATCAACTTTGGCTCCTTACCATCAAGTCAAGTCAAGTCAAGTCAAGTCAAGT
 TCCTGCTGATGGAGATCGTCACCTACGGCCGGATCCCTTACCAGGGATGTCAAACCTGAAGTGTCCG
 AGCTCTGGAGCGTGGATACCGGATGCCTCGCCAGAGAACTGCCAGAGGAGCTCTACAACATCATGATG
 CGCTGCTGAAAAACCGTCCGGAGGAGCGGCCACCTTCAATACATCCAGAGTGTGCTGGATGACTTCT
 ACACGGCCACAGAGGCCAGTACCAACAGCAGCCA

ACGCGTACGCGGCCGCTCGAGCAGAACTCATCTCAGAAGAGGATCTGGCAGCAAATGATATCCTGGATT
 ACAAGGATGACGACGATAAGGTTTAA

Protein Sequence:

>RC230231 representing NM_001172130
 Red=Cloning site Green=Tags(s)

LGGRSSCEDPGCPRDEERAPRMGCMKSKFLQVGGNTFSKTETSASPHCPVYVPDPTSTIKPGPNSHNSNT
 PGIREGSEDIIVVALYDYEAIHHEDLSFQKGDQMVVLEESGEWWKARSLATRKEGYIPSNYVARVDSLET
 EEWFFKGISRKDAERQLLAPGNMLGSFMIRDSETTKGSYSLSVRDYDPRQGDVVKHYKIRTLDNNGFFYIS
 PRSTFSTLQELVDHYKKGNDGLCQKLSVPCMSSKPKPWEKDAWEIPRESLKLEKKGAGQFGEVWMATY
 NKHTKVAVKTMKPGSMSVEAFLAEANVMKTLQHDKLVKLHAVVTKEPIYIITEFMAKGSLLDFLKSDEGS
 KQPLPKLIDFSAQIAEGMAFIEQRNYIHRDLRAANILVSASLVCKIADFLARVIEDNEYTAREGAKFPI
 KWTAPEAINFGSFTIKSDVWSFGILLMEIVTYGRIPYPGMSNPEVIRALERGYRMPRENCEPEELYNIMM
 RCWKNRPEERPTFEYIQSVLDDFYTATESQYQQQP

TRTRPLEQKLISEEDLAANDILDYKDDDDKV

Chromatograms:

https://cdn.origene.com/chromatograms/mk8065_d12.zip

Restriction Sites:

Sgfl-Mlul

Cloning Scheme:


ACCN: NM_001172130

ORF Size: 1575 bp

OTI Disclaimer: The molecular sequence of this clone aligns with the gene accession number as a point of reference only. However, individual transcript sequences of the same gene can differ through naturally occurring variations (e.g. polymorphisms), each with its own valid existence. This clone is substantially in agreement with the reference, but a complete review of all prevailing variants is recommended prior to use. [More info](#)

OTI Annotation: This clone was engineered to express the complete ORF with an expression tag. Expression varies depending on the nature of the gene.

Components: The ORF clone is ion-exchange column purified and shipped in a 2D barcoded Matrix tube containing 10ug of transfection-ready, dried plasmid DNA (reconstitute with 100 ul of water).

Reconstitution Method:

1. Centrifuge at 5,000xg for 5min.
2. Carefully open the tube and add 100ul of sterile water to dissolve the DNA.
3. Close the tube and incubate for 10 minutes at room temperature.
4. Briefly vortex the tube and then do a quick spin (less than 5000xg) to concentrate the liquid at the bottom.
5. Store the suspended plasmid at -20°C. The DNA is stable for at least one year from date of shipping when stored at -20°C.

RefSeq: [NM_001172130.2](#)

RefSeq ORF: 1578 bp

Locus ID: 3055

UniProt ID: [P08631](#)

Cytogenetics: 20q11.21

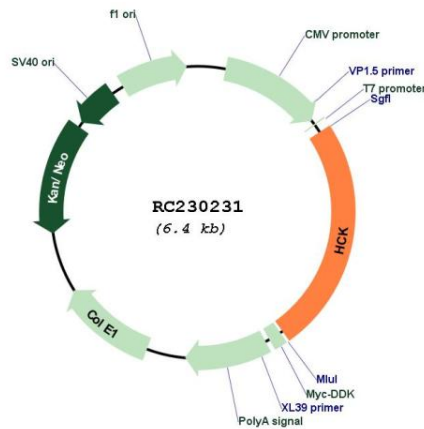
Protein Families: Druggable Genome, Protein Kinase

Protein Pathways: Chemokine signaling pathway, Fc gamma R-mediated phagocytosis

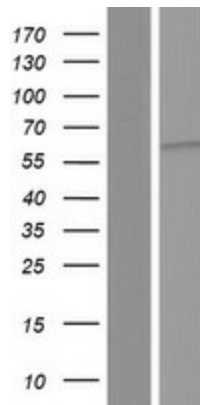
MW: 60 kDa

Gene Summary: The protein encoded by this gene is a member of the Src family of tyrosine kinases. This protein is primarily hemopoietic, particularly in cells of the myeloid and B-lymphoid lineages. It may help couple the Fc receptor to the activation of the respiratory burst. In addition, it may play a role in neutrophil migration and in the degranulation of neutrophils. Multiple isoforms with different subcellular distributions are produced due to both alternative splicing and the use of alternative translation initiation codons, including a non-AUG (CUG) codon. [provided by RefSeq, Feb 2010]

Product images:



Circular map for RC230231



Western blot validation of overexpression lysate (Cat# [LY433231]) using anti-DDK antibody (Cat# [TA50011-100]). Left: Cell lysates from untransfected HEK293T cells; Right: Cell lysates from HEK293T cells transfected with RC230231 using transfection reagent MegaTran 2.0 (Cat# [TT210002]).