

## Product datasheet for RC229963

### CD14 (NM\_001174105) Human Tagged ORF Clone

#### Product data:

Product Type:	Expression Plasmids
Product Name:	CD14 (NM_001174105) Human Tagged ORF Clone
Tag:	Myc-DDK
Symbol:	CD14
Mammalian Cell Selection:	Neomycin
Vector:	pCMV6-Entry (PS100001)
E. coli Selection:	Kanamycin (25 ug/mL)
ORF Nucleotide Sequence:	>RC229963 ORF sequence Red=Cloning site Blue=ORF Green=Tags(s)

TTTTGTAATACGACTCACTATAGGGCGGCCGGAATTCGTCGACTGGATCCGGTACCGAGGAGATCTGCC  
GCC**CGATCGCC**

ATGGAGCGCGCTCCTGCTTGTGCTGCTGCTGCTGCCGCTGGTGCACGTCTCTGCGACCAGCCAGAAC  
CTTGTGAGCTGGACGATGAAGATTTCCGCTGCGTCTGCAACTTCTCCGAACCTCAGCCCGACTGGTCCGA  
AGCCTTCCAGTGTGTGCTGCAGTAGAGGTGGAGATCCATGCCGGCGGTCTAACCTAGAGCCGTTTCTA  
AAGCGCGTCGATGCGGACGCCGACCCGCGGCAGTATGCTGACACGGTCAAGGCTCTCCGCTGCGGCGGC  
TCACAGTGGGAGCCGACAGGTTCTGCTCAGCTACTGGTAGGCGCCCTGCGTGTGCTAGCGTACTCCCG  
CCTCAAGGAAGTACGCTCGAGGACCTAAAGATAACCGGCACCATGCCTCCGCTGCCTCTGGAAGCCACA  
GGACTTGCACTTTCCAGCTTGGCCTACGCAACGTGTCGTGGGCGACAGGGCGTTCTTGGCTCGCCGAGC  
TGCAGCAGTGGCTCAAGCCAGGCCTCAAGGTAAGTACTGAGCATTGCCAAGCACACTCGCCTGCTTTTCTG  
CGAACAGGTTTCGCGCCTTCCCGCCCTTACCAGCCTAGACCTGTCTGACAATCCTGGACTGGGCGAACGC  
GGACTGATGGCGGCTCTCTGTCCCACAAGTTCGCGCCATCCAGAATCTAGCGCTGCGCAACACAGGAA  
TGGAGACGCCACAGGCGTGTGCGCCGACTGGCGGCGGAGGTGTGAGCCACAGCCTAGACCTCAG  
CCACAACCTGCTGCGCGCCACCCTAAACCCTAGCGCTCCGAGATGCATGTGGTCCAGCGCCCTGAACCTC  
CTCAATCTGTCGTTTCGCTGGGCTGGAACAGGTGCCTAAAGGACTGCCAGCCAAGCTCAGAGTGTCTGATC  
TCAGCTGCAACAGACTGAACAGGCGCCGAGCCTGACGAGCTGCCGAGGTGGATAACCTGACACTGGA  
CGGAATCCCTTCTGTTCCCTGGAAGTCCCTCCCCACGAGGGCTCAATGAACTCCGCGGTGGTCCCA  
GCCTGTGCACGTTTCGACCTGTCCGTTGGGGGTGTGCGGAACCCTGGTGTCTCCAAGGGGCCCGGGGT  
TTGCC

**ACGCGT**ACGCGGCCGCTCGAGCAGAACTCATCTCAGAAGAGGATCTGGCAGCAATGATATCCTGGATT  
ACAAGGATGACGACGATAAGGTTTAA



[View online »](#)

**Protein Sequence:** >RC229963 protein sequence  
Red=Cloning site Green=Tags(s)

MERASCLLLLLLPLVHVSATTPEPCELDDEDFRCVCFNFSEPQPDWSEAFQCVCVSAVEVEIHAGGLNLEPFL  
 KRVDADADPRQYADTVKALRVRRLTVGAAQVPAQLLVGALRVLAYSRLKELTLEDLKITGTMPPLEAT  
 GLALSSLRLRNVSATGRSWLAELQQWLKPKLVLSIAQAHSPAFSCEQVRAFPAALTSLDLSDNPGLGER  
 GLMAALCPHKFPAIQNLALRNTGMETPTGVCAALAAAGVQPHSLDLSHNSLRATVNPSPAPRCMWSSALNS  
 LNL SFAGLEQVPKGLPAKLRVLDLSCNRLNRAPQPELPEVDNLTL DGNPFLVPGTALPHEGSMNSGVVP  
 ACARSTLSVGVSGTLVLLQGARGFA

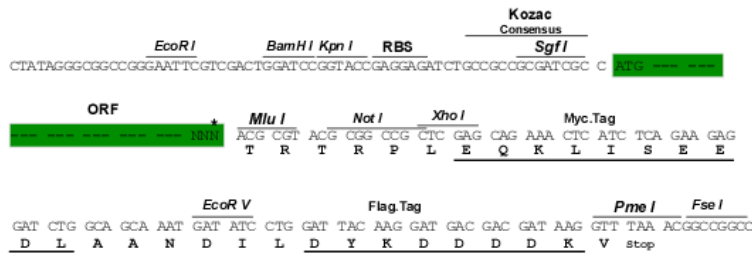
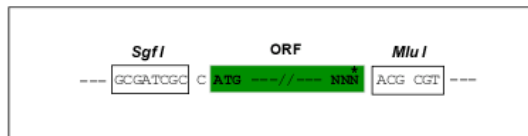
TRTRPLEQKLISEEDLAANDILDYKDDDDKV

**Chromatograms:** [https://cdn.origene.com/chromatograms/mk6306\\_f06.zip](https://cdn.origene.com/chromatograms/mk6306_f06.zip)

**Restriction Sites:** SgfI-MluI

**Cloning Scheme:**

Cloning sites used for ORF Shuttling:



\* The last codon before the Stop codon of the ORF

**ACCN:** NM\_001174105

**ORF Size:** 1125 bp

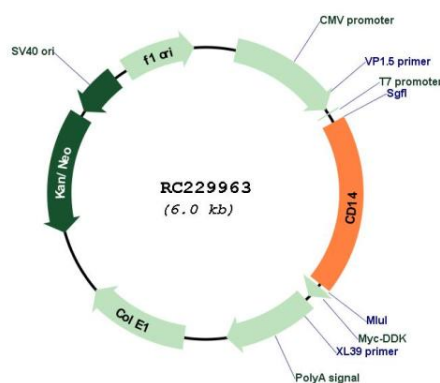
**OTI Disclaimer:** The molecular sequence of this clone aligns with the gene accession number as a point of reference only. However, individual transcript sequences of the same gene can differ through naturally occurring variations (e.g. polymorphisms), each with its own valid existence. This clone is substantially in agreement with the reference, but a complete review of all prevailing variants is recommended prior to use. [More info](#)

**OTI Annotation:** This clone was engineered to express the complete ORF with an expression tag. Expression varies depending on the nature of the gene.

**Components:** The ORF clone is ion-exchange column purified and shipped in a 2D barcoded Matrix tube containing 10ug of transfection-ready, dried plasmid DNA (reconstitute with 100 ul of water).

<b>Reconstitution Method:</b>	<ol style="list-style-type: none"><li>1. Centrifuge at 5,000xg for 5min.</li><li>2. Carefully open the tube and add 100ul of sterile water to dissolve the DNA.</li><li>3. Close the tube and incubate for 10 minutes at room temperature.</li><li>4. Briefly vortex the tube and then do a quick spin (less than 5000xg) to concentrate the liquid at the bottom.</li><li>5. Store the suspended plasmid at -20°C. The DNA is stable for at least one year from date of shipping when stored at -20°C.</li></ol>
<b>RefSeq:</b>	<a href="#">NM_001174105.2</a>
<b>RefSeq Size:</b>	1540 bp
<b>RefSeq ORF:</b>	1128 bp
<b>Locus ID:</b>	929
<b>UniProt ID:</b>	<a href="#">P08571</a>
<b>Cytogenetics:</b>	5q31.3
<b>Protein Families:</b>	Adult stem cells, Druggable Genome, Embryonic stem cells, ES Cell Differentiation/IPS, Transmembrane
<b>Protein Pathways:</b>	Hematopoietic cell lineage, MAPK signaling pathway, Pathogenic Escherichia coli infection, Regulation of actin cytoskeleton, Toll-like receptor signaling pathway
<b>MW:</b>	40.1 kDa
<b>Gene Summary:</b>	The protein encoded by this gene is a surface antigen that is preferentially expressed on monocytes/macrophages. It cooperates with other proteins to mediate the innate immune response to bacterial lipopolysaccharide, and to viruses. This gene has been identified as a target candidate in the treatment of SARS-CoV-2-infected patients to potentially lessen or inhibit a severe inflammatory response. Alternative splicing results in multiple transcript variants encoding the same protein. [provided by RefSeq, Aug 2020]

## Product images:



Circular map for RC229963