

## Product datasheet for **RC229954**

### CD244 (NM\_001166663) Human Tagged ORF Clone

#### Product data:

Product Type:	Expression Plasmids
Product Name:	CD244 (NM_001166663) Human Tagged ORF Clone
Tag:	Myc-DDK
Symbol:	CD244
Synonyms:	2B4; NAIL; NKR2B4; Nmrk; SLAMF4
Mammalian Cell Selection:	Neomycin
Vector:	pCMV6-Entry (PS100001)
E. coli Selection:	Kanamycin (25 ug/mL)
ORF Nucleotide Sequence:	>RC229954 representing NM_001166663 Red=Cloning site Blue=ORF Green=Tags(s)

TTTTGTAATACGACTCACTATAGGGCGCCGGGAATTCGTCGACTGGATCCGGTACCGAGGAGATCTGCC  
GCC**CGGATCGCC**

ATGCTGGGGCAAGTGGTCACCCTCATACTCCTCCTGCTCCTCAAGGTGTATCAGGGCAAAGGATGCCAGG  
GATCAGCTGACCATGTGGTTAGCATCTCGGGAGTGCCCTTTCAGTTACAACCAAACAGCATAACAGACGAA  
GGTTGACAGCATTGCATGGAAGAAGTTGCTGCCCTCACAAATGGATTTTCATCACATATTGAAGTGGGAG  
AATGGCTCTTTCCTTCCAATACTTCCAATGATAGATTCAAGTTTATAGTCAAGAACTTGAGTCTTCTCA  
TCAAGGCAGCTCAGCAGCAGGACAGTGGCCTCTACTGCCTGGAGGTCACCAGTATATCTGGAAAAGTTCA  
GACAGCCACGTTCCAGGTTTTGTATTTGAATCTCTGCTTCCAGATAAAGTTGAGAAACCCCGCCTACAG  
GGCAGGGGAAGATCCTGGACAGAGGGAGATGCCAAGTGGCTCTGTCTTGTCTCCAGGGATGGCA  
ATGTGTCTATGCTTGGTACAGAGGGAGCAAGCTGATCCAGACAGCAGGGAACTCACCTACCTGGACGA  
GGAGGTTGACATTAATGGCACTCACACATACCTGCAATGTCAGCAATCCTGTTAGCTGGGAAAGCCAC  
ACCCTGAATCTCACTCAGGACTGTCAGAATGCCATCAGGAATTCAGATTTTGGCCGTTTTTGGTGTCA  
TCGTGATTCTAAGCGCACTGTTCTTGGCACCCCTGCCTGCTTCTGTGTGGAGGAGAAAGAGGAAGGA  
GAAGCAGTCAGAGACCAGTCCCAAGGAATTTTGAACAATTTACGAAGATGTCAAGGATCTGAAAACCAGG  
AGAAATCAGAGCAGGAGCAGACTTTTCTGGAGGGGGGAGCACCATCTACTATGATCCAGTCCCAGT  
CTTCTGCTCCACGTACAAGAAGCTGCATATACATTATTCATTAATTCAGCCTTCCAGGAAGTCTGG  
ATCCAGGAAGAGGAACCCAGCCCTTCTTCAATAGCACTATCTATGAAGTGATTGGAAAGAGTCAACCT  
AAAGCCGAGAACCCTGCTCGATTGAGCCGAAAGAGCTGGAGAACCTTTGATGTTTATTCC

**ACGCGT**ACGCGGCCGCTCGAGCAGAAACTCATCTCAGAAGAGGATCTGGCAGCAAATGATATCCTGGATT  
ACAAGGATGACGACGATAAGGTTTAA



[View online »](#)

**Protein Sequence:** >RC229954 representing NM\_001166663  
Red=Cloning site Green=Tags(s)

MLGQVVTLLLLLLLVYQKGKCGSADHVVSISGVPLQLQPNSIQTKVDSIAWKLLPSQNGFHHILKWE  
 NGSLPSNTSNDRF SFIVKNLSLLIKAAQQQDGLYCLEVTSISGKVQATFQVVFESLLPDKVEKPRLO  
 GGKILDRGRQCVALSCLVSRDGNVSYAWYRGSKLIQTAGNLTYLDEEVDINGHTHTYTCNVSNPVSWEH  
 TLNLTQDCQNAHQEFRFWPFLV IIVILSALFLGTLACFCVWRRKRKEKQSETSPKEFLTIYEDVKDLKTR  
 RNHEQEQTFFPGGSTIYSMIQSQSSAPTSQEPAYTLYSLIQPSRKSRSRKRNRHSPFSFNSTIYEVIGKSQP  
 KAQNPARLSRKELENFDVYS

TRTRPLEQKLISEEDLAANDILDYKDDDDKV

**Chromatograms:** [https://cdn.origene.com/chromatograms/mk8055\\_c03.zip](https://cdn.origene.com/chromatograms/mk8055_c03.zip)

**Restriction Sites:** SgfI-MluI

**Cloning Scheme:**



**ACCN:** NM\_001166663

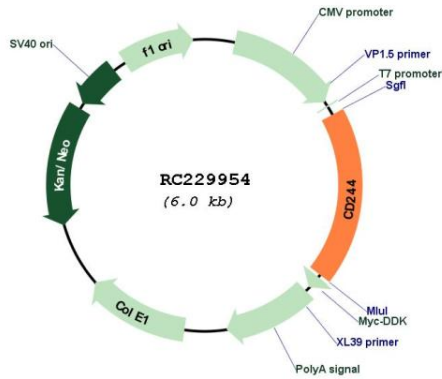
**ORF Size:** 1110 bp

**OTI Disclaimer:** Due to the inherent nature of this plasmid, standard methods to replicate additional amounts of DNA in E. coli are highly likely to result in mutations and/or rearrangements. Therefore, OriGene does not guarantee the capability to replicate this plasmid DNA. Additional amounts of DNA can be purchased from OriGene with batch-specific, full-sequence verification at a reduced cost. Please contact our customer care team at [custsupport@origene.com](mailto:custsupport@origene.com) or by calling 301.340.3188 option 3 for pricing and delivery.

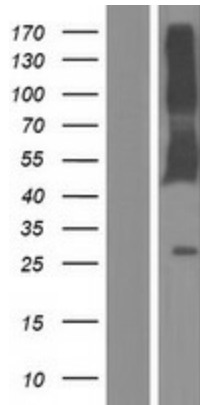
The molecular sequence of this clone aligns with the gene accession number as a point of reference only. However, individual transcript sequences of the same gene can differ through naturally occurring variations (e.g. polymorphisms), each with its own valid existence. This clone is substantially in agreement with the reference, but a complete review of all prevailing variants is recommended prior to use. [More info](#)

<b>OTI Annotation:</b>	This clone was engineered to express the complete ORF with an expression tag. Expression varies depending on the nature of the gene.
<b>Components:</b>	The ORF clone is ion-exchange column purified and shipped in a 2D barcoded Matrix tube containing 10ug of transfection-ready, dried plasmid DNA (reconstitute with 100 ul of water).
<b>Reconstitution Method:</b>	<ol style="list-style-type: none"><li>1. Centrifuge at 5,000xg for 5min.</li><li>2. Carefully open the tube and add 100ul of sterile water to dissolve the DNA.</li><li>3. Close the tube and incubate for 10 minutes at room temperature.</li><li>4. Briefly vortex the tube and then do a quick spin (less than 5000xg) to concentrate the liquid at the bottom.</li><li>5. Store the suspended plasmid at -20°C. The DNA is stable for at least one year from date of shipping when stored at -20°C.</li></ol>
<b>RefSeq:</b>	<a href="#">NM_001166663.2</a>
<b>RefSeq ORF:</b>	1113 bp
<b>Locus ID:</b>	51744
<b>UniProt ID:</b>	<a href="#">Q9BZW8</a>
<b>Cytogenetics:</b>	1q23.3
<b>Protein Families:</b>	Druggable Genome, ES Cell Differentiation/IPS, Transmembrane
<b>Protein Pathways:</b>	Natural killer cell mediated cytotoxicity
<b>MW:</b>	42.1 kDa
<b>Gene Summary:</b>	This gene encodes a cell surface receptor expressed on natural killer (NK) cells (and some T cells) that mediate non-major histocompatibility complex (MHC) restricted killing. The interaction between NK-cell and target cells via this receptor is thought to modulate NK-cell cytolytic activity. Alternatively spliced transcript variants encoding different isoforms have been found for this gene.[provided by RefSeq, Oct 2009]

Product images:



Circular map for RC229954



Western blot validation of overexpression lysate (Cat# [LY432954]) using anti-DDK antibody (Cat# [TA50011-100]). Left: Cell lysates from untransfected HEK293T cells; Right: Cell lysates from HEK293T cells transfected with RC229954 using transfection reagent MegaTran 2.0 (Cat# [TT210002]).