

Product datasheet for RC229945

alpha 2 Glycine Receptor (GLRA2) (NM_001171942) Human Tagged ORF Clone

Product data:

Product Type:	Expression Plasmids
Product Name:	alpha 2 Glycine Receptor (GLRA2) (NM_001171942) Human Tagged ORF Clone
Tag:	Myc-DDK
Symbol:	alpha 2 Glycine Receptor
Synonyms:	GLR
Mammalian Cell Selection:	Neomycin
Vector:	pCMV6-Entry (PS100001)
E. coli Selection:	Kanamycin (25 ug/mL)
ORF Nucleotide Sequence:	>RC229945 representing NM_001171942 Red=Cloning site Blue=ORF Green=Tags(s)

TTTTGTAATACGACTCACTATAGGGCGGCCGGAATTCGTCGACTGGATCCGGTACCGAGGAGATCTGCC
GCC**CGATCGCC**

ATGGACTACCGAGTGAATATTTTTCTGAGACAACAGTGAATGATTCACGGCTGGCGTACAGTGAGTACC
CAGATGACTCCCTGGACTTGGACCCATCCATGCTAGACTCCATTTGAAAACAGATTTGTTCTTTGCCAA
TGAGAAGGGTGCCAACTCCACGATGTCACCACTGACAACAAATTGCTACGGATTCGAAAAATGGCAA
GTGCTCTACAGTATCAGACTCACCTTGACCTTATCCTGTCCCATGGACTGAAGAAGTTCCGATGGATG
TCCAGACCTGTACAATGCAGCTGGAGAGTTTTGGGTACACGATGAATGACCTGATATTTGAGTGGTTAAG
TGATGGTCCAGTCAAGTTGCTGAAGGATTGACCTGCCCCAGTTTATTTGAAAAGAAGAGAAGGAACTT
GGCTACTGTACAAAGCACTACAACACTGAAAAGTTTACCTGCATTGAGGTCAAGTTTCATCTGGAACGCC
AAATGGGATATTTTGTATCCAGATGTACATCCCAAGCCTGCTTATAGTAATTTTGTCTGGGTTTCCTT
TTGGATAAATATGGATGCAGCCCTGCCAGGGTCGCACTGGGCATCACCACAGTCTTAACGATGACCACC
CAGAGTTCAGGCTCCAGGGCATCTTGCCAAAGGTCTCCTATGTAAGGCGATTGACATCTGGATGGCGG
TGTGCCTTCTGTTGTGTTTGTGCTTACTGGAATACGCAGCGGTGAACCTCGTCTCCAGGCAACACAA
GGAGTTCCTGCGCCTCCGAAGAAGACAGAAGAGGCAGAATAAGGAAGAAGACGTTACTCGTAAAAGTCGT
TTTAATTTTAGCGTTATGGGATGGTCACTGCCTCCAAGTAAAAGATGGAACAGCTGTCAAGGCCACAC
CTGCCAACCCACTCCCACAACCGCCAAAAGATGGAGATGCTATCAAGAAGAAGTTTGTGGACCGGGCAAA
AAGGATTGACACGATATCTCGAGCTGCCTTCCATTGGCCTTCTCATTTCACATCTTTTACTGGATC
ACATACAAGATCATTCGGCATGAAGATGTCCACAAGAAA

ACGCGTACGCGGCCGCTCGAGCAGAACTCATCTCAGAAGAGGATCTGGCAGCAAATGATATCCTGGATT
ACAAGGATGACGACGATAAGGTTTAA



[View online »](#)

Protein Sequence: >RC229945 representing NM_001171942
 Red=Cloning site Green=Tags(s)

MDYRVNIFLRQQWNSRLAYSEYPDDSLDLPSMLDSIWKPDLLFFANEKGANFHDVTTDNKLLRISKNGK
 VLYSIRLTLTLSCPMDLKNFPMQVQCTMQLESFGYTMNDLIFEWLSDGPVQVAEGLTLPQFILKEEKEL
 GYCTKHYNTGKFTCIEVKFHLERQMGYYLIQMYIPSLILVILSWVSFWINMDAAPARVALGITTTLTMTT
 QSSGSRASLPKVSYYKAIIDIWMAVCLLFVFAALLEYAAVNFVSRQHKFLRLRRRQKRONKEEDVTRESR
 FNFSGYMGHCLQVKDGTAVKATPANPLPQPPKDGDAIKKKFVDRAKRIDTISRAAFPLAFLIFNIFYWI
 TYKIIRHEDVHKK

TRTRPLEQKLISEEDLAANDILDYKDDDDKV

Chromatograms: https://cdn.origene.com/chromatograms/ja1577_g07.zip

Restriction Sites: SgfI-MluI

Cloning Scheme:



ACCN: NM_001171942

ORF Size: 1089 bp

OTI Disclaimer: The molecular sequence of this clone aligns with the gene accession number as a point of reference only. However, individual transcript sequences of the same gene can differ through naturally occurring variations (e.g. polymorphisms), each with its own valid existence. This clone is substantially in agreement with the reference, but a complete review of all prevailing variants is recommended prior to use. [More info](#)

OTI Annotation: This clone was engineered to express the complete ORF with an expression tag. Expression varies depending on the nature of the gene.

Components: The ORF clone is ion-exchange column purified and shipped in a 2D barcoded Matrix tube containing 10ug of transfection-ready, dried plasmid DNA (reconstitute with 100 ul of water).

Reconstitution Method:

1. Centrifuge at 5,000xg for 5min.
2. Carefully open the tube and add 100ul of sterile water to dissolve the DNA.
3. Close the tube and incubate for 10 minutes at room temperature.
4. Briefly vortex the tube and then do a quick spin (less than 5000xg) to concentrate the liquid at the bottom.
5. Store the suspended plasmid at -20°C. The DNA is stable for at least one year from date of shipping when stored at -20°C.

RefSeq: NM_001171942.1, NP_001165413.1

RefSeq ORF: 1092 bp

Locus ID: 2742

UniProt ID: P23416

Cytogenetics: Xp22.2

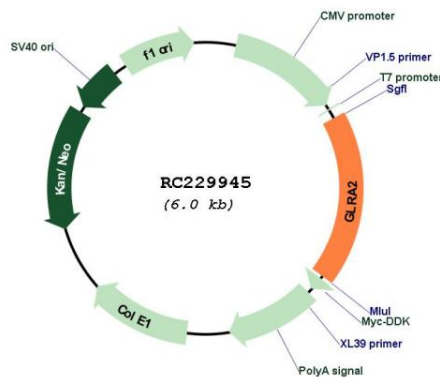
Protein Families: Druggable Genome, Ion Channels: Cys-loop Receptors, Transmembrane

Protein Pathways: Neuroactive ligand-receptor interaction

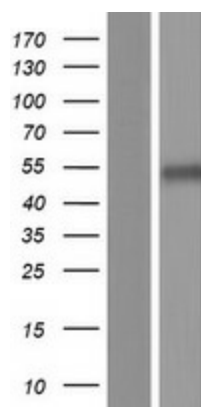
MW: 42.5 kDa

Gene Summary: The glycine receptor consists of two subunits, alpha and beta, and acts as a pentamer. The protein encoded by this gene is an alpha subunit and can bind strychnine. Several transcript variants encoding different isoforms have been found for this gene.[provided by RefSeq, Jan 2010]

Product images:



Circular map for RC229945



Western blot validation of overexpression lysate (Cat# [LY432945]) using anti-DDK antibody (Cat# [TA50011-100]). Left: Cell lysates from untransfected HEK293T cells; Right: Cell lysates from HEK293T cells transfected with RC229945 using transfection reagent MegaTran 2.0 (Cat# [TT210002]).