

## Product datasheet for **RC228910**

### **GABA A Receptor alpha 5 (GABRA5) (NM\_001165037) Human Tagged ORF Clone**

#### **Product data:**

Product Type:	Expression Plasmids
Product Name:	GABA A Receptor alpha 5 (GABRA5) (NM_001165037) Human Tagged ORF Clone
Tag:	Myc-DDK
Symbol:	GABA A Receptor alpha 5
Synonyms:	DEE79; EIEE79
Mammalian Cell Selection:	Neomycin
Vector:	pCMV6-Entry (PS100001)
E. coli Selection:	Kanamycin (25 ug/mL)



[View online »](#)

**ORF Nucleotide Sequence:**

>RC228910 representing NM\_001165037  
 Red=Cloning site Blue=ORF Green=Tags(s)

TTTTGTAATACGACTCACTATAGGGCGGCCGGAATTCGTCGACTGGATCCGGTACCGAGGAGATCTGCC  
 GCC**CGGATCGCC**

ATGGACAATGGAATGTTCTCTGGTTTTATCATGATCAAAAACCTCCTTCTTTTTGTATTCCATGAACT  
 TATCCAGTCACTTTGGCTTTTCACAGATGCCAACCAGTTCAGTGAAGATGAGACCAATGACAACATCAC  
 GATATTTACCAGGATCTTGGATGGGCTCTTGGATGGCTACGACAACAGACTTCGGCCCGGCTGGGAGAG  
 CGCATCACTCAGGTGAGGACCGACATCTACGTCACCAGCTTCGGCCCGGTGCCGACCGGAAATGGAGT  
 ACACCATAGACGTGTTTTCCGACAAAGCTGGAAGATGAAAGGCTTCGGTTAAGGGGCCATGCAGCG  
 CCTCCCTCTCAACAACCTCCTTGCAGCAAGATCTGGACCCAGACAGTTCCTCCACAACGGGAAGAAG  
 TCCATCGCTCACAACATGACCACGCCCAACAAGCTGCTGCGGCTGGAGGACGACGGCACCCCTGCTTACA  
 CCATGCGCTTACCATCTCTGCAGAGTCCCCATGCAGCTTGAGGACTTCCCGATGGATGCGCACGCTTG  
 CCCTCTGAAATTTGGCAGCTATGCGTACCCTAATTCTGAAGTCGCTACGCTCGGACCAACGGCTCCACC  
 AAGTCGGTGGTGGCGGAAGATGGCTCCAGACTGAACCACTGATGGGGCAGACGGTGGGCA  
 CTGAGAACATCAGCACCAGCACAGGCGAATACACAATCATGACAGCTCACTTCCACCTGAAAAGGAAGAT  
 TGGCTACTTTGTCATCCAGACCTACCTCCCTGCATAATGACCGTGATCTTATCACAGGTGCTTTTTGG  
 CTGAACCGGGAATCAGTCCCAGCCAGGACAGTTTTTGGGGTACCACGGTCTGACCATGACGACCCCTCA  
 GCATCAGCGCCAGGAATCTCTGCCAAAGTGGCTACGCCACCGCCATGGACTGGTTCATAGCCGTGTG  
 CTATGCCTTCGTCTCTCGGCGTGATAGAGTTGCCACGGTCAATTACTTTACCAAGAGAGGCTGGGCC  
 TGGGATGGCAAAAAGCCTTGAAGCAGCAAGATCAAGAAAAGCGTGAAGTCACTAAATAAGTCAA  
 CAAACGCTTTTACAACCTGGGAAGATGTCTACCCCCCAACATTCCGAAGGAACAGACCCAGCAGGGAC  
 GTCGAATACAACCTCAGTCTCAGTAAAACCTCTGAAGAGAAGACTTCTGAAAGCAAAAAGACTTACAAC  
 AGTATCAGCAAAATTGACAAAATGTCCGAATCGTATTCCAGTCTTGTTCGGCAGTTTCAACTTAGTTT  
 ACTGGGCAACGTATTTGAATAGGGAGCCGGTGATAAAAGGAGCCGCTCTCCAAA

**ACGCGT**ACGCGGCCGCTCGAGCAGAACTCATCTCAGAAGAGGATCTGGCAGCAATGATATCCTGGATT  
 ACAAGGATGACGACGATAAGGTTTAA

**Protein Sequence:**

>RC228910 representing NM\_001165037  
 Red=Cloning site Green=Tags(s)

MDNGMFSGFIMIKNLLFCISMNLSHFQSMPTSSVKDETNDNITIFTRILDGLLDGYDNRLRPLGLGE  
 RITQVRTDIYVTSFGPVSDTEMEYIDVFFRQSWKDERLRFKQPMQRLPLNLLASKIWTPTFFHNGKK  
 SIAHNMTTPNKLLRLEDDGTLTYMRLTISAECPMQLEDFPMDAHACPLKFGSYAYPNSEVVVYVWNGST  
 KSVVAEDGSRLNQYHLMGQTVGTENISTSTGEYTIMTAHFHLKRKIGYFVIQTYLPCIMTVILSQVSW  
 LNRESVPARTVFGVTTVLTMTLSISARNSLPKVAYATAMDWFIAVCYAFVFSALIEFATVNYFTKRGWA  
 WDGKKALEAAKIKKKREVILNKSTNAFTTGKMSHPPNIPKEQTPAGTSNTTSVSVKPSSEKTSSEKKTYN  
 SISKIDKMSRIVFPVLFGTFLVYWATYLNREPVIKGAASPK

**TR**TRPLEQKLISEEDLAANDILDYKDDDDKV

**Chromatograms:**

[https://cdn.origene.com/chromatograms/mg2486\\_e09.zip](https://cdn.origene.com/chromatograms/mg2486_e09.zip)

**Restriction Sites:**

Sgfl-Mlul

**Cloning Scheme:**


**ACCN:** NM\_001165037

**ORF Size:** 1386 bp

**OTI Disclaimer:** The molecular sequence of this clone aligns with the gene accession number as a point of reference only. However, individual transcript sequences of the same gene can differ through naturally occurring variations (e.g. polymorphisms), each with its own valid existence. This clone is substantially in agreement with the reference, but a complete review of all prevailing variants is recommended prior to use. [More info](#)

**OTI Annotation:** This clone was engineered to express the complete ORF with an expression tag. Expression varies depending on the nature of the gene.

**Components:** The ORF clone is ion-exchange column purified and shipped in a 2D barcoded Matrix tube containing 10ug of transfection-ready, dried plasmid DNA (reconstitute with 100 ul of water).

**Reconstitution Method:**

1. Centrifuge at 5,000xg for 5min.
2. Carefully open the tube and add 100ul of sterile water to dissolve the DNA.
3. Close the tube and incubate for 10 minutes at room temperature.
4. Briefly vortex the tube and then do a quick spin (less than 5000xg) to concentrate the liquid at the bottom.
5. Store the suspended plasmid at -20°C. The DNA is stable for at least one year from date of shipping when stored at -20°C.

**RefSeq:** [NM\\_001165037.1](#), [NP\\_001158509.1](#)

**RefSeq ORF:** 1389 bp

**Locus ID:** 2558

**UniProt ID:** [P31644](#)

**Cytogenetics:** 15q12

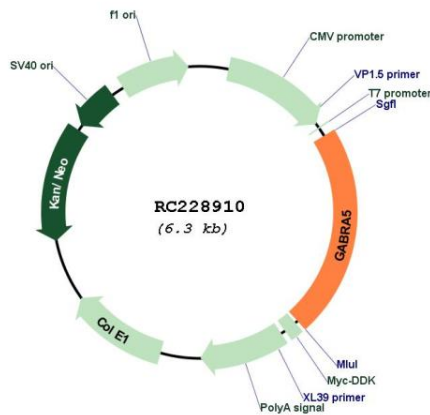
**Protein Families:** Druggable Genome, Ion Channels: Cys-loop Receptors, Transmembrane

**Protein Pathways:** Neuroactive ligand-receptor interaction

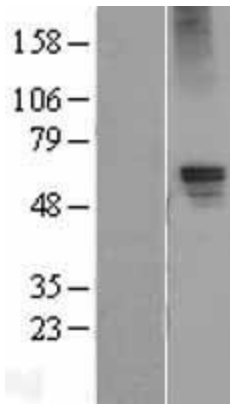
**MW:** 52.15 kDa

**Gene Summary:** GABA is the major inhibitory neurotransmitter in the mammalian brain where it acts at GABA-A receptors, which are ligand-gated chloride channels. Chloride conductance of these channels can be modulated by agents such as benzodiazepines that bind to the GABA-A receptor. At least 16 distinct subunits of GABA-A receptors have been identified. Transcript variants utilizing three different alternative non-coding first exons have been described. [provided by RefSeq, Jul 2008]

**Product images:**



Circular map for RC228910



Western blot validation of overexpression lysate (Cat# [LY431938]) using anti-DDK antibody (Cat# [TA50011-100]). Left: Cell lysates from untransfected HEK293T cells; Right: Cell lysates from HEK293T cells transfected with RC228910 using transfection reagent MegaTran 2.0 (Cat# [TT210002]).