

Product datasheet for **RC228830**

PAF Receptor (PTAFR) (NM_001164721) Human Tagged ORF Clone

Product data:

Product Type:	Expression Plasmids
Product Name:	PAF Receptor (PTAFR) (NM_001164721) Human Tagged ORF Clone
Tag:	Myc-DDK
Symbol:	PAF Receptor
Synonyms:	PAFR
Mammalian Cell Selection:	Neomycin
Vector:	pCMV6-Entry (PS100001)
E. coli Selection:	Kanamycin (25 ug/mL)
ORF Nucleotide Sequence:	>RC228830 representing NM_001164721 Red=Cloning site Blue=ORF Green=Tags(s)

TTTTGTAATACGACTCACTATAGGGCGGCCGGAATTCGTCGACTGGATCCGGTACCGAGGAGATCTGCC
GCC**CGATCGCC**

ATGGAGCCACATGACTCCTCCACATGGACTCTGAGTTCCGATACACTCTTCCCGATTGTTTACAGCA
TCATCTTTGTGCTCGGGTCATTGCTAATGGCTACGTGCTGTGGGTCTTGGCCGCTGTACCCTTGCAA
GAAATTCATGAGATAAAGATCTTCATGGTGAACCTCACCATGGCGGACATGCTCTTCTTGATCACCTG
CCACTTTGGATTGTCTACTACAAAACCAGGGCAACTGGATACTCCCAAATTCCTGTGCAACGTGGCTG
GCTGCCTTTTCTCATCAACACCTACTGCTCTGTGGCCTTCTGGCGTCATCACTTATAACCGCTCCA
GGCAGTAACTCGGCCATCAAGACTGCTCAGGCCAACCCCGCAAGCGTGGCATCTCTTTGCTTGGTC
ATCTGGGTGGCCATTGTGGGAGCTGCATCCTACTTCTCATCCTGGACTCCACCAACACAGTGCCCGACA
GTGCTGGCTCAGGCAACGTCACTCGCTGCTTTGAGCATTACGAGAAGGGCAGCGTGCCAGTCCCTCATCAT
CCACATCTTATCGTGTTGAGCTTCTTCTGGTCTTCTCATCATCCTCTTCTGCAACCTGGTCATCATC
CGTACCTTGCTCATGCAGCCGGTGCAGCAGCAGCGCAACGCTGAAGTCAAGCGCCGGCGCTGTGGATGG
TGTGCACGGTCTTGGCGGTTCATCATCTGCTTCGTGCCACCACGTGGTGCAGCTGCCCTGGACCCT
TGCTGAGCTGGGCTTCCAGGACAGCAAATCCACCAGGCCATTAATGATGCACATCAGGTACCCTCTGC
CTCCTTAGCACCAACTGTGCTTTAGACCCTGTTATCTACTGTTTCCCTACCAAGAAGTTCGCAAGCACC
TCACCGAAAAGTTCTACAGCATGCGCAGTAGCCGAAAATGCTCCCGGCCACCACGGATACGGTCACTGA
AGTGGTTGTGCCATTCAACCAGATCCCTGGCAATTCCTCAAAAAT

ACGCGTACGCGGCCGCTCGAGCAGAACTCATCTCAGAAGAGGATCTGGCAGCAAATGATATCCTGGATT
ACAAGGATGACGACGATAAGGTTTAA



[View online »](#)

Protein Sequence: >RC228830 representing NM_001164721
 Red=Cloning site Green=Tags(s)

MEPHDSSHMDSEFRYTLFPIVYSIIFVLGVIANGYVLWVWFARLYPCKKFNEIKIFMVNLTADMLFLITL
 PLWIVYYQNQGNWILPKFLCNVAGCLFFINTYCSVAFLGVITYNRFQAVTRPIKTAQANTRKRGISLV
 IWVAIVGAASYFLILDSTNTVPDSAGSGNVTRCFEYHEKGSVPVLIHIFIVFSFFLVFLIILFCNLVII
 RTLLMQPVQQRNAEVKRRALWMVCTVLAVFIIICFVPHHVVQLPWTLAELGFQDSKFHQAINDAHQVTL
 LLSTNCVLDPVIYCFLTKKFRKHLTEKFYSMRSSRKCSRATTDVTEVVVFPNQIPGNSLKN

TRTRPLEQKLISEEDLAANDILDYKDDDDKV

Chromatograms: https://cdn.origene.com/chromatograms/mg3945_c01.zip

Restriction Sites: SgfI-MluI

Cloning Scheme:

Cloning sites used for ORF Shutting:



* The last codon before the Stop codon of the ORF

ACCN: NM_001164721

ORF Size: 1026 bp

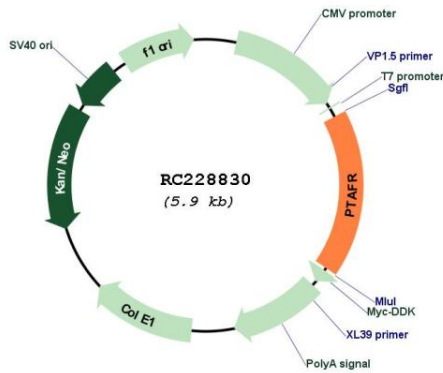
OTI Disclaimer: The molecular sequence of this clone aligns with the gene accession number as a point of reference only. However, individual transcript sequences of the same gene can differ through naturally occurring variations (e.g. polymorphisms), each with its own valid existence. This clone is substantially in agreement with the reference, but a complete review of all prevailing variants is recommended prior to use. [More info](#)

OTI Annotation: This clone was engineered to express the complete ORF with an expression tag. Expression varies depending on the nature of the gene.

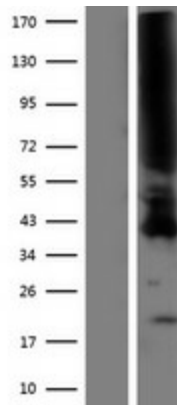
Components: The ORF clone is ion-exchange column purified and shipped in a 2D barcoded Matrix tube containing 10ug of transfection-ready, dried plasmid DNA (reconstitute with 100 ul of water).

Reconstitution Method:	<ol style="list-style-type: none">1. Centrifuge at 5,000xg for 5min.2. Carefully open the tube and add 100ul of sterile water to dissolve the DNA.3. Close the tube and incubate for 10 minutes at room temperature.4. Briefly vortex the tube and then do a quick spin (less than 5000xg) to concentrate the liquid at the bottom.5. Store the suspended plasmid at -20°C. The DNA is stable for at least one year from date of shipping when stored at -20°C.
RefSeq:	NM_001164721.1 , NP_001158193.1
RefSeq ORF:	1029 bp
Locus ID:	5724
UniProt ID:	P25105
Cytogenetics:	1p35.3
Protein Families:	Druggable Genome, GPCR, Transmembrane
Protein Pathways:	Calcium signaling pathway, Neuroactive ligand-receptor interaction
MW:	39 kDa
Gene Summary:	<p>This gene encodes a seven-transmembrane G-protein-coupled receptor for platelet-activating factor (PAF) that localizes to lipid rafts and/or caveolae in the cell membrane. PAF (1-0-alkyl-2-acetyl-sn-glycero-3-phosphorylcholine) is a phospholipid that plays a significant role in oncogenic transformation, tumor growth, angiogenesis, metastasis, and pro-inflammatory processes. Binding of PAF to the PAF-receptor (PAFR) stimulates numerous signal transduction pathways including phospholipase C, D, A2, mitogen-activated protein kinases (MAPKs), and the phosphatidylinositol-calcium second messenger system. Following PAFR activation, cells become rapidly desensitized and this refractory state is dependent on PAFR phosphorylation, internalization, and down-regulation. Alternative splicing results in multiple transcript variants. [provided by RefSeq, Aug 2011]</p>

Product images:



Circular map for RC228830



Western blot validation of overexpression lysate (Cat# [LY431858]) using anti-DDK antibody (Cat# [TA50011-100]). Left: Cell lysates from untransfected HEK293T cells; Right: Cell lysates from HEK293T cells transfected with RC228830 using transfection reagent MegaTran 2.0 (Cat# [TT210002]).