

Product datasheet for **RC228751**

SSX2 (SSX2B) (NM_001164417) Human Tagged ORF Clone

Product data:

Product Type:	Expression Plasmids
Product Name:	SSX2 (SSX2B) (NM_001164417) Human Tagged ORF Clone
Tag:	Myc-DDK
Symbol:	SSX2
Synonyms:	CT5.2; CT5.2b; HOM-MEL-40; SSX
Mammalian Cell Selection:	Neomycin
Vector:	pCMV6-Entry (PS100001)
E. coli Selection:	Kanamycin (25 ug/mL)
ORF Nucleotide Sequence:	>RC228751 representing NM_001164417 Red=Cloning site Blue=ORF Green=Tags(s)

TTTTGTAATACGACTCACTATAGGGCGGCCGGAATTCGTCGACTGGATCCGGTACCGAGGAGATCTGCC
 GCC**CGATCGCC**

ATGAACGGAGACGACGCCTTTGCAAGGAGACCCACGGTTGGTGCTCAAATACCAGAGAAGATCCAAAAGG
 CCTTCGATGATATTGCCAAATCTTCTCTAAGGAAGAGTGGGAAAAGATGAAAGCCTCAGAGAAAATCTT
 CTATGTGTATATGAAGAGAAAGTATGAGGCTATGACTAACTAGGTTTCAAGGCCACCTCCCACCTTTC
 ATGTGTAATAACGGGCCGAAGACTTCCAGGGGAATGATTGGATAATGACCCTAACCGTGGGAATCAGG
 TTGAACGTCCTCAGATGACTTTCGGCAGGCTCCAGGGAATCTCCCGAAGATCATGCCCAAGAAGCCAGC
 AGAGGAAGGAAATGATTCGGAGGAAGTGCCAGAAAGCATCTGGCCACAAAATGATGGGAAAGAGCTGTGC
 CCCCCGGGAAAACCACTACCTCTGAGAAGATTACGAGAGATCTGGACCCAAAAGGGGGGAACATGCCT
 GGACCCACAGACTGCGTGAGAGAAAACAGCTGGTGATTATGAAGAGATCAGCGACCCTGAGGAAGATGA
 CGAG

ACGCGTACGCGGCCGCTCGAGCAGAACTCATCTCAGAAGAGGATCTGGCAGCAAATGATATCCTGGATT
 ACAAGGATGACGACGATAAGGTTTAA

Protein Sequence:	>RC228751 representing NM_001164417 Red=Cloning site Green=Tags(s)
-------------------	---

MNGDDAFARRPTVGAQIPEKIQKAFDDIAKYFSKEWEKMKASEKIFYVYMKRKYEAMTKLGFKATLPPF
 MCNKRAEDFQGNLDNDPNRGNQVERPQMTFGRLQGISPKIMPKKPAEEGNDSEEVPEASGPQNDGKELC
 PPGKPTTSEKIHRSRGPKRGEHAWTHRLRERKQLVIYEEISDPEEDDE

TRTRPLEQKLISEEDLAANDILDYKDDDDKV


[View online »](#)

Chromatograms: https://cdn.origene.com/chromatograms/ja1446_b09.zip

Restriction Sites: SgfI-MluI

Cloning Scheme:



ACCN: NM_001164417

ORF Size: 564 bp

OTI Disclaimer: The molecular sequence of this clone aligns with the gene accession number as a point of reference only. However, individual transcript sequences of the same gene can differ through naturally occurring variations (e.g. polymorphisms), each with its own valid existence. This clone is substantially in agreement with the reference, but a complete review of all prevailing variants is recommended prior to use. [More info](#)

OTI Annotation: This clone was engineered to express the complete ORF with an expression tag. Expression varies depending on the nature of the gene.

Components: The ORF clone is ion-exchange column purified and shipped in a 2D barcoded Matrix tube containing 10ug of transfection-ready, dried plasmid DNA (reconstitute with 100 ul of water).

Reconstitution Method:

1. Centrifuge at 5,000xg for 5min.
2. Carefully open the tube and add 100ul of sterile water to dissolve the DNA.
3. Close the tube and incubate for 10 minutes at room temperature.
4. Briefly vortex the tube and then do a quick spin (less than 5000xg) to concentrate the liquid at the bottom.
5. Store the suspended plasmid at -20°C. The DNA is stable for at least one year from date of shipping when stored at -20°C.

Note: Plasmids are not sterile. For experiments where strict sterility is required, filtration with 0.22um filter is required.

RefSeq: [NM_001164417.3](#)

RefSeq ORF: 567 bp

Locus ID: 727837

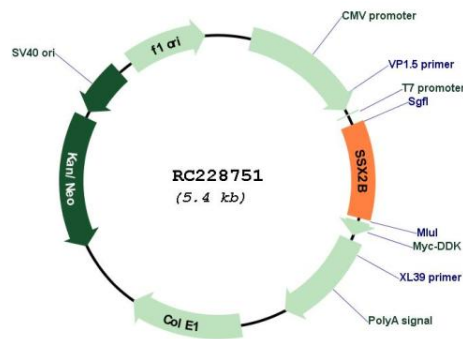
UniProt ID: [Q16385](#)

Cytogenetics: Xp11.22

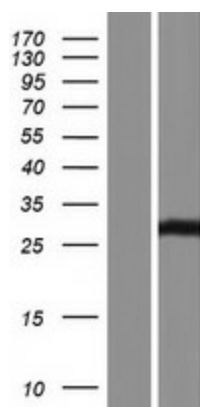
MW: 21.4 kDa

Gene Summary: The product of this gene belongs to the family of highly homologous synovial sarcoma X (SSX) breakpoint proteins. These proteins may function as transcriptional repressors. They are also capable of eliciting spontaneous humoral and cellular immune responses in cancer patients, and are potentially useful targets in cancer vaccine-based immunotherapy. This gene, and also the SSX1 and SSX4 family members, have been involved in t(X;18)(p11.2;q11.2) translocations that are characteristically found in all synovial sarcomas. This translocation results in the fusion of the synovial sarcoma translocation gene on chromosome 18 to one of the SSX genes on chromosome X. The encoded hybrid proteins are likely responsible for transforming activity. Alternative splicing of this gene results in multiple transcript variants. This gene also has an identical duplicate, GeneID: 6757, located about 45 kb upstream in the opposite orientation on chromosome X. [provided by RefSeq, Jul 2013]

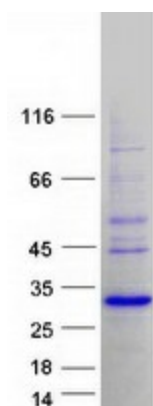
Product images:



Circular map for RC228751



Western blot validation of overexpression lysate (Cat# [LY431779]) using anti-DDK antibody (Cat# [TA50011-100]). Left: Cell lysates from untransfected HEK293T cells; Right: Cell lysates from HEK293T cells transfected with RC228751 using transfection reagent MegaTran 2.0 (Cat# [TT210002]).



Coomassie blue staining of purified SSX2B protein (Cat# [TP328751]). The protein was produced from HEK293T cells transfected with SSX2B cDNA clone (Cat# RC228751) using MegaTran 2.0 (Cat# [TT210002]).