

Product datasheet for **RC228451**

PLBD2 (NM_001159727) Human Tagged ORF Clone

Product data:

Product Type:	Expression Plasmids
Product Name:	PLBD2 (NM_001159727) Human Tagged ORF Clone
Tag:	Myc-DDK
Symbol:	PLBD2
Synonyms:	P76
Mammalian Cell Selection:	Neomycin
Vector:	pCMV6-Entry (PS100001)
E. coli Selection:	Kanamycin (25 ug/mL)



[View online »](#)

ORF Nucleotide Sequence:

>RC228451 representing NM_001159727
 Red=Cloning site Blue=ORF Green=Tags(s)

TTTTGTAATACGACTCACTATAGGGCGGCCGGAATTCGTCGACTGGATCCGGTACCGAGGAGATCTGCC
 GCC**CGCATCGCC**

ATGGTGGGCCAGATGTACTGCTACCCCGCAGCCACCTGGCCCGGGCGCTGACGCGGGCGCTGGCGCTGG
 CCCTGGTCTGGCCCTGCTGGTTCGGGCCGTTCTGAGCGGCTGGCGGGGCGATCCCAGCGCCGGGGG
 CCGCTGGGCGCGCGATGGGCAGGTCCCTCCAGCCTCCCGCAGCCGCTCGGTGCTCCTGGACGTCTCGGC
 GGCCAGCTGCTTATGGTGGACGGACGCCACCCTGACGCGGTGGCCTGGGCCAACCTCACCAACGCCATCC
 GCGAGACTGGGTGGCCCTTCTGGAGCTGGGCACAAGTGGCCAATAACAATGACAGCTTGCAGGCCTATGC
 AGCCGGTGTGGTGGAGGCTGCTGTGTCGGAGGAGCTCATCTACATGCACTGGATGAACACGGTGGTGAAT
 TACTGCGGCCCTTCGAGTATGAAGTCGGCTACTGCGAGAGGCTGAAGAGCTTCTGGAGGCCAACCTAG
 AGTGGATGCAGGAAGAGATGGAGTCAAACCCAGACTCACCTTACTGGCACCAGGTGCGGCTGACCCTCT
 GCAGCTGAAAGGCTGGAGGACAGCTACGAAGGCCGTGTGAGCTTCCAGCTGGGAAGTTACCATCAAA
 CCCTTGGGGTTCCTCTGCTGCAGCTCTCTGGGGACCTGGAAGACCTGGAGCTGGCCCTGAACAAGACCA
 AGATCAAACCTTCTCTGGGCTCTGGCTCCTGTTCTGCCCTCATCAAGCTGCTCCCTGGCCAGAGTGACCT
 CCTGGTTGCCACAACACTGGAACAACCTACCAGCACATGCTGCGTGTCAACAAGTACTGGCTCCAG
 TTCCGGGAAGGCCCTGGGGGACTACCCGCTGGTTCCCGGCAACAAGCTGGTCTTCTCCTCCTACCCCG
 GCACCATCTTCTCCTGCGACGACTTCTACATCCTGGGCAGTGGCTGGTGGTACTGGAGACCACCATGG
 CAACAAGAACCAGCCCTGTGGAAGTATGTGCGGCCAGGGGCTGTGTGCTGGAGTGGGTACGCAACATC
 GTGGCCAAACCCTGGCCTCGGATGGGGCCACCTGGGCAGACATCTTCAAGAGTTCAACAGCGGCACCG
 GTCCTTGGTGGTGGTGGCTGACAAGACCTCGGAGCTTACCAGAAGACCTACTGGCCAGCTACAACATACC
 GTCTTTCGAGACTGTGTTCAATGCCAGTGGGCTGCAGGCCCTAGTGGCCAGTATGGGGACTGGTTTTCT
 TATGACGGGAGCCCCGGGCCAGATCTTCCGGCGGAACCAGTCACTGGTACAAGACATGGACTCCATGG
 TCAGGCTGATGAGGTACAATGACTTCTCCATGACCCTCTGTCACTGTGCAAAGCCTGCAACCCCGAGCC
 CAATGGGGAGAATGCTATCTCCGCCGCTCCGACCTCAACCCGGCCAATGGCTCTACCCCTTCCAGGCC
 CTGCGTCAAGCCTCCATGGGGTATCGATGTGAAGGTGACCAGCATGTCACTGGCCAGGATCCTGAGCC
 TGCTGGCGCCAGCGTCCACGTGGGACCAGGTGCCCCGTTCCAGTGGAGCACCTCGCCCTTCCAGCG
 CCTGCTGCACATGGGCCAGCCAGACCTCTGGAAGTTCGCGCTGTCAAGGTTTCATGGGAC

ACGCGTACGCGGCCGCTCGAGCAGAAACTCATCTCAGAAGAGGATCTGGCAGCAAATGATATCCTGGATT
 ACAAGGATGACGACGATAAGGTTTAA

Protein Sequence:

>RC228451 representing NM_001159727
 Red=Cloning site Green=Tags(s)

MVGMQMYCPGSHLARALTRALALALVLLVLPFLSGLAGAIAPAGGRWARDGQVPPASRSRSLLDVSA
 GQLLMVDGRHPDAVAVANLTNAIRETGWAFLELGTSGQYNDLQAYAAAGVVEAAVSEELIYMHWMNTVVN
 YCGPFYEYVGYCERLKSFLANLEWMQEEMESNPDSPLYWHQVRLTLLQLKGLDSYEGRVSPAGKFTIK
 PLGFLLLQLSGDLEDLELALNKTIKPSLGSAGSALIKLLPGQSDLLVAHNTWNNYQHMLRVIKKYWLQ
 FREGPWGDYPLVPGNKLVFSSYPGTIFSCDDFYILGSLVTLETTIGNKNPALWKYVPRGCVLEWVRNI
 VANRLASDGATWADIFKRFNSGTGMVVVADKTSELYQKTYWASYNIPSFETVFNASGLQALVAQYGDWFS
 YDGSPPRAQIFRRNQSLVQDMSMVRLMRYNDFLHDPLSLCKACNPQPNGENAI SARSDLNPNANGSYPPQA
 LRQRSHGGIDVKVTSMSLARILSLLAASGPTWDQVPPFQWSTSPFSGLLHMGQPDWLKWFAPVKVSWD

TRTRPLEQKLISEEDLAANDILDYKDDDDKV

Chromatograms:

https://cdn.origene.com/chromatograms/mk8006_h09.zip

Restriction Sites:

Sgfl-Mlul

Cloning Scheme:


ACCN: NM_001159727

ORF Size: 1671 bp

OTI Disclaimer: The molecular sequence of this clone aligns with the gene accession number as a point of reference only. However, individual transcript sequences of the same gene can differ through naturally occurring variations (e.g. polymorphisms), each with its own valid existence. This clone is substantially in agreement with the reference, but a complete review of all prevailing variants is recommended prior to use. [More info](#)

OTI Annotation: This clone was engineered to express the complete ORF with an expression tag. Expression varies depending on the nature of the gene.

Components: The ORF clone is ion-exchange column purified and shipped in a 2D barcoded Matrix tube containing 10ug of transfection-ready, dried plasmid DNA (reconstitute with 100 ul of water).

- Reconstitution Method:**
1. Centrifuge at 5,000xg for 5min.
 2. Carefully open the tube and add 100ul of sterile water to dissolve the DNA.
 3. Close the tube and incubate for 10 minutes at room temperature.
 4. Briefly vortex the tube and then do a quick spin (less than 5000xg) to concentrate the liquid at the bottom.
 5. Store the suspended plasmid at -20°C. The DNA is stable for at least one year from date of shipping when stored at -20°C.

RefSeq: [NM_001159727.2](#)

RefSeq ORF: 1674 bp

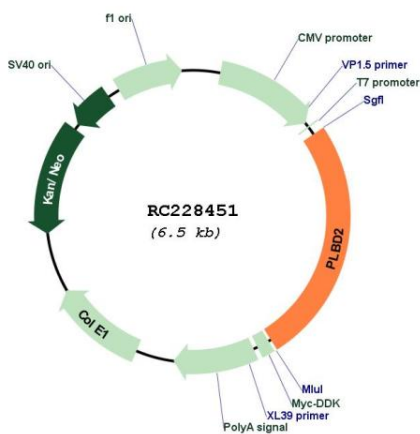
Locus ID: 196463

UniProt ID: [Q8NHP8](#)

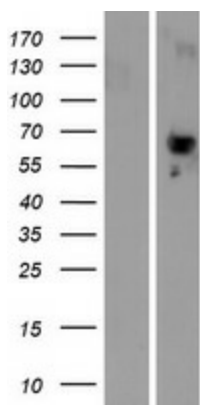
Cytogenetics: 12q24.13

Protein Families: Transmembrane
MW: 61.88 kDa
Gene Summary: Putative phospholipase.[UniProtKB/Swiss-Prot Function]

Product images:



Circular map for RC228451



Western blot validation of overexpression lysate (Cat# [LY431479]) using anti-DDK antibody (Cat# [TA50011-100]). Left: Cell lysates from untransfected HEK293T cells; Right: Cell lysates from HEK293T cells transfected with RC228451 using transfection reagent MegaTran 2.0 (Cat# [TT210002]).