

Product datasheet for RC228227

Ataxin 3 (ATXN3) (NM_001164781) Human Tagged ORF Clone

Product data:

Product Type:	Expression Plasmids
Product Name:	Ataxin 3 (ATXN3) (NM_001164781) Human Tagged ORF Clone
Tag:	Myc-DDK
Symbol:	Ataxin 3
Synonyms:	AT3; ATX3; JOS; MJD; MJD1; SCA3
Mammalian Cell Selection:	Neomycin
Vector:	pCMV6-Entry (PS100001)
E. coli Selection:	Kanamycin (25 ug/mL)
ORF Nucleotide Sequence:	>RC228227 representing NM_001164781 Red=Cloning site Blue=ORF Green=Tags(s)

TTTTGTAATACGACTCACTATAGGGCGGCCGGAATTCGTCGACTGGATCCGGTACCGAGGAGATCTGCC
GCC**CGGATCGCC**

ATGGAGTCCATCTTCCACGAGAAAGTTATAAGCAATGCCTTGAAAGTTTGGGGTTTAGAACTAATCCTGT
TCAACAGTCCAGAGTATCAGAGGCTCAGGATCGATCCTATAAATGAAAGATCATTTATATGCAATTATA
GGAACACTGGTTTACAGTTAGAAAATTAGGAAAACAGTGGTTAACTTGAATTCTCTCTTGACGGGTCCA
GAATTAATATCAGATACATATCTTGCACCTTTCTTGGCTCAATTACAACAGGAAGTTATTCTATATTTG
TCGTTAAGGGTGATCTGCCAGATTGCGAAGCTGACCAACTCCTGCAGATGATTAGGGTCCAACAGATGCA
TCGACCAAACTTATTGGAGAAGAATTAGCACAACTAAAAGAGCAAAGAGTCCATAAAACAGACCTGGAA
CGAGTGTTAGAAGCAAATGATGGCTCAGGAATGTTAGACGAAGATGAGGAGGATTTGCAGAGGGCTCTGG
CACTAAGTCGCCAAGAAATTGACATGGAAGATGAGGAAGCAGATCTCCGCAGGGCTATTCAGCTAAGTAT
GCAAGGTAGTTCAGAAACATATCTCAAGATATGACACAGACATCAGGTACAAATCTTACTTCAGAAGAG
CTTCGGAAGAGACGAGAAGCCTACTTTGAAAAACAGCAGCAAAAGCAGCAACAGCAGCAGCAGCAGC
AGCAGGGGACCTATCAGGACAGAGTTCACATCCATGTGAAAGGCCAGCCACCAGTTCAGGAGCACTTGG
GAGTGATCTAGGTGATGCTATGAGTGAAGAAGACATGCTTCAGGCAGCTGTGACCATGTCTTTAGAACT
GTCAGAAATGATTTGAAAACAGAAGGAAAAAAA

ACGCGTACGCGGCCGCTCGAGCAGAAACTCATCTCAGAAGAGGATCTGGCAGCAAATGATATCCTGGATT
ACAAGGATGACGACGATAAGGTTTAA



[View online »](#)

Protein Sequence: >RC228227 representing NM_001164781
Red=Cloning site Green=Tags(s)

MESIFHEKVISNALKVWGLELILFNSPEYQRLRIDPINERSFICNYKEHWFTVRKLGKQWFNLSLLTGP
 ELISDTYLALFLAQLQQEGYSIFVVKGDLPDCEADQLLQIRVQQMHRPKLIGEELAQLKEQRVHKTDLE
 RVLEANDGSGMLDEDEEDLQRALALSRQEIDMEDEEADLRRAIQLSMQSSRNISQDMTQTSGTNLTSEE
 LRKRREAYFEKQQKQQQQQQQQGDL SGQSSHP CERPATSSGALGSDLGDAMSEEDMLQAAVTMSLET
 VRNDLKTEGKK

TRTRPLEQKLISEEDLAANDILDYKDDDDKV

Chromatograms: https://cdn.origene.com/chromatograms/mk8050_a03.zip

Restriction Sites: SgfI-MluI

Cloning Scheme:



ACCN: NM_001164781

ORF Size: 873 bp

OTI Disclaimer: The molecular sequence of this clone aligns with the gene accession number as a point of reference only. However, individual transcript sequences of the same gene can differ through naturally occurring variations (e.g. polymorphisms), each with its own valid existence. This clone is substantially in agreement with the reference, but a complete review of all prevailing variants is recommended prior to use. [More info](#)

OTI Annotation: This clone was engineered to express the complete ORF with an expression tag. Expression varies depending on the nature of the gene.

Components: The ORF clone is ion-exchange column purified and shipped in a 2D barcoded Matrix tube containing 10ug of transfection-ready, dried plasmid DNA (reconstitute with 100 ul of water).

Reconstitution Method:

1. Centrifuge at 5,000xg for 5min.
2. Carefully open the tube and add 100ul of sterile water to dissolve the DNA.
3. Close the tube and incubate for 10 minutes at room temperature.
4. Briefly vortex the tube and then do a quick spin (less than 5000xg) to concentrate the liquid at the bottom.
5. Store the suspended plasmid at -20°C. The DNA is stable for at least one year from date of shipping when stored at -20°C.

RefSeq: [NM_001164781.1](#), [NP_001158253.1](#)

RefSeq ORF: 876 bp

Locus ID: 4287

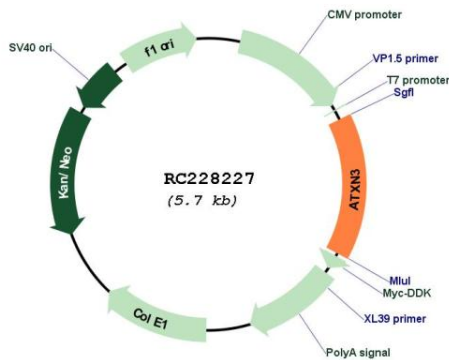
Cytogenetics: 14q32.12

Protein Families: Druggable Genome, Transcription Factors

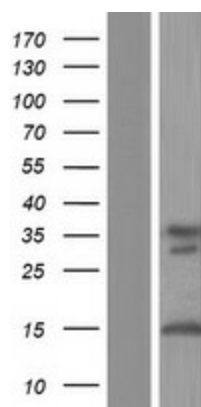
MW: 33.2 kDa

Gene Summary: Machado-Joseph disease, also known as spinocerebellar ataxia-3, is an autosomal dominant neurologic disorder. The protein encoded by this gene contains (CAG)*n* repeats in the coding region, and the expansion of these repeats from the normal 12-44 to 52-86 is one cause of Machado-Joseph disease. There is a negative correlation between the age of onset and CAG repeat numbers. Alternatively spliced transcript variants encoding different isoforms have been described for this gene. [provided by RefSeq, Jul 2016]

Product images:



Circular map for RC228227



Western blot validation of overexpression lysate (Cat# [LY431255]) using anti-DDK antibody (Cat# [TA50011-100]). Left: Cell lysates from untransfected HEK293T cells; Right: Cell lysates from HEK293T cells transfected with RC228227 using transfection reagent MegaTran 2.0 (Cat# [TT210002]).