

Product datasheet for **RC228198**

RDM1 (NM_001163130) Human Tagged ORF Clone

Product data:

Product Type: Expression Plasmids
Product Name: RDM1 (NM_001163130) Human Tagged ORF Clone
Tag: Myc-DDK
Symbol: RDM1
Synonyms: RAD52B
Mammalian Cell Selection: Neomycin
Vector: pCMV6-Entry (PS100001)
E. coli Selection: Kanamycin (25 ug/mL)
ORF Nucleotide Sequence: >RC228198 representing NM_001163130
Red=Cloning site Blue=ORF Green=Tags(s)

TTTTGTAATACGACTCACTATAGGGCGGCCGGAATTCGTCGACTGGATCCGGTACCGAGGAGATCTGCC
GCC**CGGATCGCC**

ATGCATTTACTTGTCCCACCCACAGCATTCTCTGTTCCAGCATTCTCAGTTTGGCCTTCTGTATT
CAGTCCGGGTCTCCAAATGCTGCAGTGGCCATCCTGGTTTCTATGCCGTCATTAAGTTTTATTCTGC
AAGGGCTGCCACAGAGCCAAAAGGCATGCGACCGGAAGCAGCTTTTTCCAGAAATCTCCAGTCAAGTT
CGTCTTGGCACCAGACATAAGGCAGTTCAACATCAAGCCCTTGCCTGAACAGTCCAAATGCCAAGAAC
TGGCGAATTACTACTTTGGTTTCAATGGGTGTTCCAAAAGGATCATCAAGCTTCAGGAGCTTCTGACCT
TGAAGAAAGGGAAAATGAAGATAGCATGGTGCCACTTCCGAAGCAAAGCCTGAAGTTCTTCTGTGCTTTA
GAAGTGGTGTGGCATTCTGTGATTGCAGGAGTCTGGCATTGGCTTGGTGGAGGAGCCTATGGATAAGG
TGGAGGAAGGACCATTATCATTCCCTATGAAAAGGAAGACAGCCAGAAGCTTGCTATTCAGAAGGCTTT
GTCAGATGCATTCAGAAACTGTTGATTGTTGTTCTAGAAAGTGGTAAAAAGCTGTGGAGTACAGACCC
AGTGAAGACATCGTAGGTGTCAGATGCGAAGAAGAACTACACGGTTTAATTCAAGTCCCTTGCTCTCCCT
GGAAGCAGTATGGCCAAGAGGAGGAAGGGTATCTCTCGGATTTACAGTGGAGGAGGAAGAGTTCAGGCT
GCCAGAACTTGAC

ACGCGTACGCGGCCGCTCGAGCAGAAACTCATCTCAGAAGAGGATCTGGCAGCAAATGATATCCTGGATT
ACAAGGATGACGACGATAAGGTTTAA



[View online »](#)

Protein Sequence: >RC228198 representing NM_001163130
 Red=Cloning site Green=Tags(s)

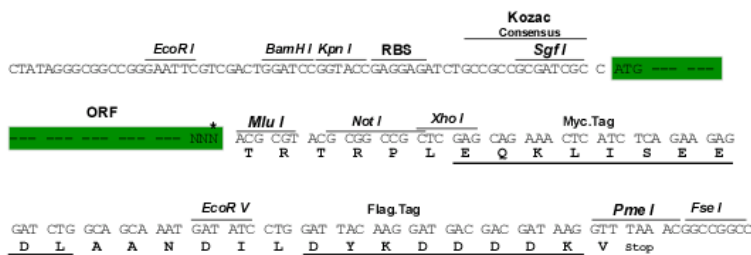
MHLLVPPPQHSLFTAFSQFGLLYSVRVFPNAAVAHPGFYAVIKFYSARAAHRAQKACDRKQLFQKSPVKV
 RLGTRHKAVQHQALALNSSKCQELANYFYGNGCSKRIIKLQELSDLEERENEDSMVPLPKQSLKFFCAL
 EVVLPSCDCRSPGIGLVEEPMDKVEEGPLSFLMKRRTAQKLAIQKALSDAFQKLLIVVLESKGIAVEYRP
 SEDIVGVRCEEELHGLIQVPCSPWKQYQEEGYLSDFLEEEEFRLPELD

TRTRPLEQKLISEEDLAANDILDYKDDDDKV

Restriction Sites: Sgfl-MluI

Cloning Scheme:

Cloning sites used for ORF Shuttling:



* The last codon before the Stop codon of the ORF

ACCN: NM_001163130

ORF Size: 783 bp

OTI Disclaimer: The molecular sequence of this clone aligns with the gene accession number as a point of reference only. However, individual transcript sequences of the same gene can differ through naturally occurring variations (e.g. polymorphisms), each with its own valid existence. This clone is substantially in agreement with the reference, but a complete review of all prevailing variants is recommended prior to use. [More info](#)

OTI Annotation: This clone was engineered to express the complete ORF with an expression tag. Expression varies depending on the nature of the gene.

Components: The ORF clone is ion-exchange column purified and shipped in a 2D barcoded Matrix tube containing 10ug of transfection-ready, dried plasmid DNA (reconstitute with 100 ul of water).

Reconstitution Method:

1. Centrifuge at 5,000xg for 5min.
2. Carefully open the tube and add 100ul of sterile water to dissolve the DNA.
3. Close the tube and incubate for 10 minutes at room temperature.
4. Briefly vortex the tube and then do a quick spin (less than 5000xg) to concentrate the liquid at the bottom.
5. Store the suspended plasmid at -20°C. The DNA is stable for at least one year from date of shipping when stored at -20°C.

RefSeq: [NM_001163130.1](#), [NP_001156602.1](#)

RefSeq ORF: 786 bp

Locus ID: 201299

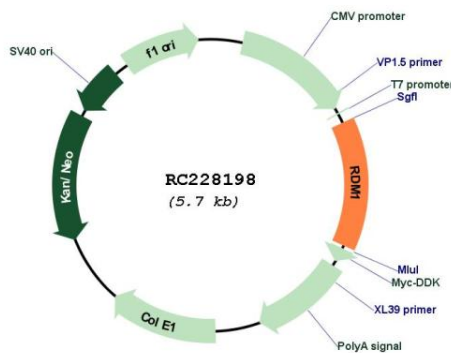
UniProt ID: [Q8NG50](#)

Cytogenetics: 17q12

MW: 29.4 kDa

Gene Summary: This gene encodes a protein involved in the cellular response to cisplatin, a drug commonly used in chemotherapy. The protein encoded by this gene contains two motifs: a motif found in RAD52, a protein that functions in DNA double-strand breaks and homologous recombination, and an RNA recognition motif (RRM) that is not found in RAD52. The RAD52 motif region in RAD52 is important for protein function and may be involved in DNA binding or oligomerization. Alternatively spliced transcript variants encoding different isoforms have been reported. [provided by RefSeq, Jul 2008]

Product images:



Circular map for RC228198