

Product datasheet for **RC227215**

RPUSD3 (NM_001142547) Human Tagged ORF Clone

Product data:

Product Type:	Expression Plasmids
Product Name:	RPUSD3 (NM_001142547) Human Tagged ORF Clone
Tag:	Myc-DDK
Symbol:	RPUSD3
Mammalian Cell Selection:	Neomycin
Vector:	pCMV6-Entry (PS100001)
E. coli Selection:	Kanamycin (25 ug/mL)
ORF Nucleotide Sequence:	>RC227215 representing NM_001142547 Red=Cloning site Blue=ORF Green=Tags(s)

TTTTGTAATACGACTCACTATAGGGCGGCCGGGAATTCGTCGACTGGATCCGGTACCGAGGAGATCTGCC
GCC**CGATCGCC**

ATGCGCGCTGTCCTGGCTCGGGAGATGGACGGCCGCCGTGTTTTGGGCCGTTCTGGAGTGGCTGGCGGC
GGGGCTGGGTGTCGCCCCAGTCCCCGAGGACGCAGGCTTTGGCACCGAAGCCCGGCATCAGAGGCAACC
CCGCGGCTCCTGCCAACGGTCGGGGCCCTCGGGGACCAGCCCTCGCGGGGCTGCTGCCAAAAACCTC
AGTCGGGAGGAGCTGGTTGATGCGCTGCGGGCAGCCGTGGTGACCGGAAAGGAAAACAGGAGAGCTGA
CGTTGTTCTCAGTGTGCCAGAGCTGAGCCAGTCCCTAGGGCTCAGGGAGCAGGAGCTTCAGGTTGTCCG
AGCATCTGGGAAAGAAAGCTCTGGCTTGTACTCCTCTCCAGCTGTCCCCAGACAGCTAGTCGCCTCCAG
AAGTACTTCACCCATGCACGGAGAGCCAAAGGCCACAGCCACCTACTGTGCTGCTCACTGATGGGATCC
CAGCTGCTTCTGAGGGGAAGATCCAGGCTGCCCTGAAACTGGAACACATTGATGGGGTCAATCTCACAGT
TCCAGTGAAGGCCCATCCCGAAAGGACATCCTGGAAGGTGTCAAGAAGACTCTCAGTCACTTTCGTGTG
GTAGCCACAGGCTCTGGCTGTGCCCTGGTCCAGCTGCAGCCACTGACAGTGTCTCCAGTCAACTACAGG
TGCACATGGTACTACAGCTCTGCCCTGTGCTTGGGGACCACATGTACTCTGCCGTGTGGGCACTGTCT
GGGCCAGCGATTTCTGCTGCCAGCTGAGAACAACAAGCCCCAAAGACAGGTCTGGATGAAGCCCTCCTC
AGACGCCTCCACCTGACCCCTCCAGGCTGCCAGCTGCCCTTGACCTCCACCTACATCGGCTCCTTC
TCCCAGGCACCAGGGCCAGGGACACCCCTGTTGAGCTCCTGGCACCAGTCCCCCTATTCTCCAGGAC
CCTACAGTGCCTGGGGCTCCGCTTACAA

ACGCGTACGCGGCCGCTCGAGCAGAACTCATCTCAGAAGAGGATCTGGCAGCAAATGATATCCTGGATT
ACAAGGATGACGACGATAAGGTTTAA



[View online »](#)

Protein Sequence: >RC227215 representing NM_001142547
Red=Cloning site Green=Tags(s)

MRAVLAREMDGRRVLGRFWSGWRRGLGVRPVPEDAGFGTEARHQRPQSGCQRSGPLGDQPFAGLLPKNL
 SREELVDALRAAVVDRKGKPGELTLFVSLPELSQSLGLREQLQVVRASGKESGLVLLSSCPQTASRLQ
 KYFTHARRAQRPTATYCAVTDGIPAASEGKIQAALKLEHIDGVNLTVPVKAPSRKDILEGVKKTLSHFRV
 VATGSGCALVQLQPLTVFSSQLQVHMLQLCPVLGDHMY SARVGTVLGQRFLLP AENNNK PQRQVLDEALL
 RRLHLTPSQAQLPLHLHLHRLLLPGTRARDTPVELLAPLPPYFSRTLQCLGLRLQ

TRTRPLEQKLISEEDLAANDILDYKDDDDKV

Chromatograms: https://cdn.origene.com/chromatograms/mk8053_a12.zip

Restriction Sites: Sgfl-MluI

Cloning Scheme:

Cloning sites used for ORF Shuttling:



* The last codon before the Stop codon of the ORF

ACCN: NM_001142547

ORF Size: 1008 bp

OTI Disclaimer: The molecular sequence of this clone aligns with the gene accession number as a point of reference only. However, individual transcript sequences of the same gene can differ through naturally occurring variations (e.g. polymorphisms), each with its own valid existence. This clone is substantially in agreement with the reference, but a complete review of all prevailing variants is recommended prior to use. [More info](#)

OTI Annotation: This clone was engineered to express the complete ORF with an expression tag. Expression varies depending on the nature of the gene.

Components: The ORF clone is ion-exchange column purified and shipped in a 2D barcoded Matrix tube containing 10ug of transfection-ready, dried plasmid DNA (reconstitute with 100 ul of water).

Reconstitution Method:

1. Centrifuge at 5,000xg for 5min.
2. Carefully open the tube and add 100ul of sterile water to dissolve the DNA.
3. Close the tube and incubate for 10 minutes at room temperature.
4. Briefly vortex the tube and then do a quick spin (less than 5000xg) to concentrate the liquid at the bottom.
5. Store the suspended plasmid at -20°C. The DNA is stable for at least one year from date of shipping when stored at -20°C.

RefSeq: [NM_001142547.2](#)

RefSeq ORF: 987 bp

Locus ID: 285367

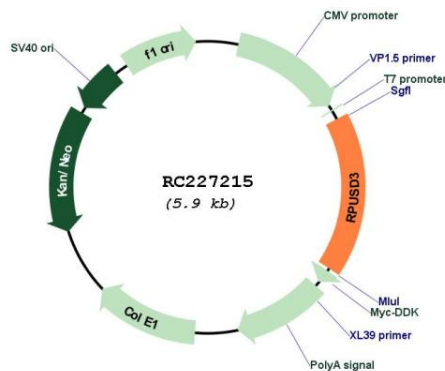
UniProt ID: [Q6P087](#)

Cytogenetics: 3p25.3

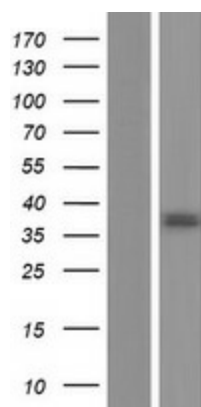
MW: 36.8 kDa

Gene Summary: This gene encodes a protein that functions in the assembly of the mitochondrial ribosome by adding a pseudouridine group to 16S rRNA. Loss of this gene results in causes defects in mitochondrial protein production. Alternative splicing results in multiple transcript variants. [provided by RefSeq, May 2017]

Product images:



Circular map for RC227215



Western blot validation of overexpression lysate (Cat# [LY428165]) using anti-DDK antibody (Cat# [TA50011-100]). Left: Cell lysates from untransfected HEK293T cells; Right: Cell lysates from HEK293T cells transfected with RC227215 using transfection reagent MegaTran 2.0 (Cat# [TT210002]).