

Product datasheet for RC227191

ABL2 (NM_001136000) Human Tagged ORF Clone

Product data:

Product Type:	Expression Plasmids
Product Name:	ABL2 (NM_001136000) Human Tagged ORF Clone
Tag:	Myc-DDK
Symbol:	ABL2
Synonyms:	ABL1; ARG
Mammalian Cell Selection:	Neomycin
Vector:	pCMV6-Entry (PS100001)
E. coli Selection:	Kanamycin (25 ug/mL)
ORF Nucleotide Sequence:	>RC227191 representing NM_001136000 Red=Cloning site Blue=ORF Green=Tags(s)

TTTTGTAATACGACTCACTATAGGGCGGCCGGAATTCGTCGACTGGATCCGGTACCGAGGAGATCTGCC
GCC**CGATCGCC**

ATGGTCCTTGGGACAGTTCTCCTTCCACCTAATAGTTATGGCAGAGATCAGGACACTTCACTTTGCTGCC
TGTGCACTGAGGCCTCAGAATCTGCTCTACCCGACTTAACAGATCACTTTGCCAGCTGTGTGGAGGATGG
ATTTGAGGAGACAAGACTGGAGGCAGTAGTCCAGAAGCTTTGCATCGTCCCTATGGTTGTGATGTTGAA
CCCCAGGCACTAAATGAGGCTATCAGGTGGAGCTCCAAGGAGAACTTGCTCGGAGCCACTGAGAGTGACC
CTAATCTCTTCGTTGCACCTTATGATTTGTAGCAAGTGGTGATAACACACTCAGCATCACTAAAGGTGA
AAAGCTACGAGTCCTTGGTTACAACCAGAATGGTGAGTGGAGTGAAGTTCGCTCTAAGAATGGGCAGGGC
TGGGTGCCAAGCAACTACATCACCCAGTGAACAGCCTGGAAAAACACTCCTGGTACCATGGACCTGTGT
CACGCAGTGCAGCTGAGTATCTGCTCAGCAGTCTAATCAATGGCAGCTTCTGGTGCGAGAAAGTGAGAG
TAGCCCTGGGCAGCTGTCCATCTCGCTCAGGTACGAGGGACGTGTGTATCACTACAGGATCAATACCACT
GCAGATGGCAAGGTGTATGTGACTGCTGAGAGCCGCTTCAGCACCTTGGCAGAGCTTGTACACCATCACT
CCACAGTGGCTGATGGGCTGGTGAACAATTACTACCCAGCACCAAGTGAATAAGCCTACAGTCTA
TGGTGTGTCCCCATCCACGACAAATGGGAAATGGAGCGAACAGATATTACCATGAAGCACAACCTTGGG
GGCGGTGAGTATGGAGAGGTTTACGTTGGCGTCTGGAAGAAATACAGCCTTACAGTTGCTGTGAAAACAT
TGAAGGAAGATACCATGGAGGTAGAAGAATTCCTGAAAGAAGCTGCAGTAAATGAAGGAAATCAAGCATCC
TAATCTGGTACAACCTTTAGGTGTGTACTTTGGAGCCACCATTTTACATTGTGACTGAATACATGCCA
TACGGGAATTTGCTGGATTACCTCCGAGAATGCAACCGAGAAGAGGTGACTGCAGTTGTGCTGCTTACA
TGGCCACTCAGATTTCTTCTGCAATGGAGTACTTAGAGAAGAAGAATTTTCATCCATAGAGATCTTGCAGC
TCGTAAGTGCCTAGTGGGAGAAAACCATGTGGTAAAAGTGGCTGACTTTGGCTTAAGTAGATTGATGACT
GGAGACACTTATACTGCTCATGCTGGAGCCAAATTTCTATTAAGTGGACAGCACCAGAGAGTCTTGCTT
ACAATACCTTCTCAATTAATCTGACGTCTGGGCTTTTGGGTATTGTTGTGGGAAATGCTACCTATGG
AATGTCACCATATCCAGGTATTGACCTGTCTCAGTCTATGACCTACTAGAAAAAGGATATCGAATGGAA



[View online »](#)

CAGCCTGAGGGATGCCCCCTAAGGTTTATGAACTTATGAGAGCATGCTGGAAGTGGAGCCTGCCGATA
 GGCCCTCTTTTGTGAAACACACCAAGCTTTTAAACCATGTTCCATGACTCCAGCATTTCTGAAGAGGT
 AGCTGAGGAGCTTGGGAGAGCCGCTCCTCGTCATCTGTTGTTCCATACCTGCCCCGGCTACCTATACTT
 CCTTCCAAGACTCGGACACTGAAGAAACAGGTGGAGAACAAGGAGAACATTGAAGGGGCACAAGATGCCA
 CAGAAAATTCTGCTTCCAGTTTAGCACCAGGGTTCATCAGAGGTGCACAGGCCTTAGTGGATCCCCAGC
 ACTGCCTCGAAAGCAAAGAGACAAGTCACCCAGCAGCCTTTGGAAGATGCCAAAGAGACATGCTTACC
 AGGGATAGGAAGGGGGCTTCTTCAGCTCCTTCATGAAGAAGAGAAATGCTCCTACACCCCCAAACGCA
 GCAGCTCCTTCCGAGAAATGGAGAATCAGCCCCATAAGAAATACGAACTCACGGGGCTTCCAGAGCAGGA
 TAGGATGGCAATGACCCTTCCCAGGAAGTCCAGAGGTCCAAACTCCAGCTGGAAGGACAGTGTCCACC
 TCTTCTCAGCCAGAAGAGAATGTGGACAGGGCCAATGACATGCTTCCAAAAAATCAGAGGAAAGTGTG
 CTCCAAGCAGGGAGAGACCAAAGCCAAGTTATTGCCAGAGGAGCCACAGCTTCTCCTCTCAGAACACC
 CTCTGGGGATCTAGCCATTACAGAGAAGGACCCTCCAGGGGTGGGAGTGGCTGGAGTGGCAGCTGCCCC
 AAGGGTAAAGAGAAGAATGGTGGGCACGACTGGGATGGCTGGAGTCCAGAGGATGGAGAGCAGCCGG
 GCTGGCCTTCTCCAGCCAAGGCTGCCCCGCTCCTCCAACCACTACAACCACAAAGTCCAGTCTTAT
 CTCACCCACTCTGAAACACACTCCAGCTGACGTGCAGCTCATTGGCACAGACTCTCAGGGGAATAAATTC
 AAGCTCTTATCTGAGCATCAGGTACATCCTCTGGAGACAAGGACCGACCCCGACGGGTAAAACCAAAGT
 GTGCCCAACCCACCACAGTGTAGACTACTGCAGCATCCGTCCATCTGCTCAGACCCTACAGAAGA
 GCCAACTGCCCTAACTGCAGGACAGTCCACATCAGAAACACAGGAAGGAGGAAAGAAGGCAGCTCTGGG
 GCAGTGCCCATCAGTGGGAAAGCTGGGAGGCCAGTGTGCCTCCACCTCAAGTGCCTCTGCCACATCTT
 CCATCTCGCCAGCCAAAATGGCCAATGGCACAGCAGGTAAGTGGCTCTGAGAAAAACCAACAGGC
 CGCTGAGAAAATCTCAGCAGACAAAATCAGCAAAGAGGCCCTGCTGGAATGTGCTGACCTACTGTCCAGT
 GCACTCACGGAACCTGTGCCAACAGCCAGCTGGTAGACTGGACACCAGCTGCTTGACTACTGCTCAG
 GCTATGTGACTGCATCCCTCAAACCGCAACAAATTTGCTTCCGAGAGGCTGTGAGCAAACCTGGAAT
 CAGCCTGCAGGAGCTACAGGTTTCTTCCAGCAGTGTGCTGGTGGCCGGGACAAACCTGTCTTAATAAC
 TTATTGTCATGTGTACAGGAAATCAGTGTGTGGTGCAGAGG

ACGCGTACGCGGCCGCTCGAGCAGAAACTCATCTCAGAAGAGGATCTGGCAGCAAATGATATCCTGGATT
 ACAAGGATGACGACGATAAGGTTTAA

Protein Sequence:

>RC227191 representing NM_001136000
 Red=Cloning site Green=Tags(s)

MVLGTVLLPPNSYGRDQDTSLCLCTEASESALPDLTDHFASCVEDGFEGDKTGGSSPEALHRPYGCDVE
 PQALNEAIRWSSKENLLGATESDPNLFVALYDFVASGDNTLSITKGEKLRVLYGNQNGEWSSEVRSKNGQG
 WVPNSNYITPVNSLEKHSWYHGPVSRSAEYLLSSLINGSFLVRESESSPGQLSISLRYEGRVYHYRINTT
 ADGKVVYTAESRFSTLAEVHHHSTVADGLVTTLHYPAPKCNKPTVYGVSPIDHKWEMERTDITMKHKL
 GGQYGEVYVGVWKKYSLTVAVKTLKEDTMEVEEFLKEAAMVKEIKHPNLVQLLVCTLEPPFYIVTEYMP
 YGNLLDYLRECNREEVTAVLLYMATQISSAMEYLEKKNFIHRDLAARNCLVGENHVVKVADFGLSRLMT
 GDTYTAHAGAKFPIKWTAPESLAYNTFSIKSDVWAFVLLWEIATYGMSPYPGIDLQVYDLEKGYRME
 QPEGCPKVVYELMRACWKWSPADRPFAETHQAFETMFHDSSIIEEVAEELGRAASSSSVVPYLPRLPIL
 PSKTRTLKKQVENKENIEGAQDATENSASSLAPGFIQAQASSGSPALPRKQRDKSPSSLLEDAKETCFT
 RDRKGGFFSSFMKRNAPTPPKRSSFREMNQPHKKYELTGLPEQDRMAMTLPRNCQRSKQLERTVST
 SSQPEENVDRANDMLPKKSEESAAPSRERPKAKLLPRGATALPLRTPSGDLAITEKDPGVPVAGVAAAP
 KGKEKNGGARLGMAGVPEDGEQPGWSPAKAAPVLPPTHNHKVPVLSPTLKHPTADVQLIGTDSQGNKF
 KLLSEHQVTSSGDKDRPRRVKPKAPPPPPVMRLLQHPSICSDPTEPTALTAGQSTSETQEGGKKAALG
 AVPI SGKAGRPVMPPPQVPLPTSSISPAKMANGTAGTKVALRKTQAEEKISADKISKEALLECADLLSS
 ALTEPVNSQLVDTGHQLLDYCSGYVDCIPQTRNKFAFREAVSKLELSLQELQVSSAAAGVPGTNPVLLN
 LLSVCVQEISDVVQR

TRTRPLEQKLI SEEDLAANDILDYKDDDDKV

Chromatograms:

https://cdn.origene.com/chromatograms/ja2050_a08.zip

Restriction Sites: SgfI-MluI

Cloning Scheme:



ACCN: NM_001136000

ORF Size: 3192 bp

OTI Disclaimer: The molecular sequence of this clone aligns with the gene accession number as a point of reference only. However, individual transcript sequences of the same gene can differ through naturally occurring variations (e.g. polymorphisms), each with its own valid existence. This clone is substantially in agreement with the reference, but a complete review of all prevailing variants is recommended prior to use. [More info](#)

OTI Annotation: This clone was engineered to express the complete ORF with an expression tag. Expression varies depending on the nature of the gene.

Components: The ORF clone is ion-exchange column purified and shipped in a 2D barcoded Matrix tube containing 10ug of transfection-ready, dried plasmid DNA (reconstitute with 100 ul of water).

Reconstitution Method:

1. Centrifuge at 5,000xg for 5min.
2. Carefully open the tube and add 100ul of sterile water to dissolve the DNA.
3. Close the tube and incubate for 10 minutes at room temperature.
4. Briefly vortex the tube and then do a quick spin (less than 5000xg) to concentrate the liquid at the bottom.
5. Store the suspended plasmid at -20°C. The DNA is stable for at least one year from date of shipping when stored at -20°C.

RefSeq: [NM_001136000.3](#)

RefSeq Size: 11648 bp

RefSeq ORF: 3195 bp

Locus ID: 27

UniProt ID: [P42684](#)

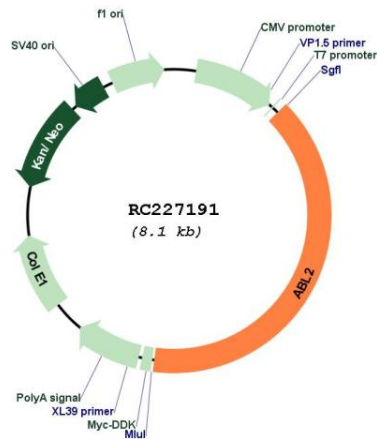
Cytogenetics: 1q25.2
Protein Families: Druggable Genome, Protein Kinase

Protein Pathways: ErbB signaling pathway, Viral myocarditis

MW: 116.7 kDa

Gene Summary: This gene encodes a member of the Abelson family of nonreceptor tyrosine protein kinases. The protein is highly similar to the c-abl oncogene 1 protein, including the tyrosine kinase, SH2 and SH3 domains, and it plays a role in cytoskeletal rearrangements through its C-terminal F-actin- and microtubule-binding sequences. This gene is expressed in both normal and tumor cells, and is involved in translocation with the ets variant 6 gene in leukemia. Multiple alternatively spliced transcript variants encoding different protein isoforms have been found for this gene. [provided by RefSeq, Nov 2009]

Product images:



Circular map for RC227191