

Product datasheet for RC227051

Parvin gamma (PARVG) (NM_001137606) Human Tagged ORF Clone

Product data:

Product Type:	Expression Plasmids
Product Name:	Parvin gamma (PARVG) (NM_001137606) Human Tagged ORF Clone
Tag:	Myc-DDK
Symbol:	Parvin gamma
Synonyms:	AI413459; gamma-parvin; OTTMUSP00000032048; parvin, gamma
Mammalian Cell Selection:	Neomycin
Vector:	pCMV6-Entry (PS100001)
E. coli Selection:	Kanamycin (25 ug/mL)
ORF Nucleotide Sequence:	>RC227051 ORF sequence Red=Cloning site Blue=ORF Green=Tags(s)

TTTTGTAATACGACTCACTATAGGGCGGCCGGAATTCGTCGACTGGATCCGGTACCGAGGAGATCTGCC
GCC**CGATCGCC**

ATGGAGCCGGAGTTCTTGTACGACCTGCTGCAGCTCCCCAAGGGGTGGAGCCCCAGCGGAGGAGGAGC
TCTCAAAGGAGGAAAGAAGAAATACCTGCCACCACTTCCCGAAGGACCCAAATTTGAAGAAGTCA
GAAGGTGTTGATGGAGTGGATCAATGCCACTTCTCCCCGAGCACATTGGTCCGAGCCTGGAGGAG
GACATGTTGACGGGCTCATCTACACCACCTATTCCAGAGGCTGGCGGCGCTCAAGCTGGAAGCAGAGG
ACATCGCCCTGACAGCCACAAGCCAGAAGCACAAGCTCACAGTGGTGTGGAGGCCGTGAACCGGAGTCT
GCAGCTGGAGGAGTGGCAGGCCAAGTGGAGCGTGGAGAGCATTTCAACAAGGACCTGTTGTCTACCCTG
CACCTCCTTGTGGCCCTGGCCAAGCGCTTCCAGCCGACCTCTCCCTCCCAACCAACGTCCAGGTGGAGG
TCATCACTATCGAGAGCACAAAAGTGGTCTGAAGTCAGAGAAGTTGGTGAACAGCTCACTGAATACAG
CACAGACAAGGACGAGCCTCAAAGGACGTCTTTGATGAATATTTAAGCTGGCTCCGGAGAAAAGTGAAC
GCAGTGAAGAGGCCATCGTGAACCTTTGTCAACCAGAAGCTGGACCGCTGGCCCTGTCTGTGCAGAATC
TGGACACCCAGTTGCAGATGGGGTCACTTACTTGTCTGATTGGACAACCTGAAGGCTTCTTCTGCA
CTTAAAGGAATTTACCTCACTCCCAACTCTCCTGCAGAAATGCTGCACAACGTCAACCTGGCGCTGGAG
CTGCTGAAGGACGAGGGCCTGCTCAGCTGCCCTGTCAGCCCTGAAGATATCGTGAACAAGGATGCCAAGA
GCACACTGCGGGTCTCTATGGTCTGTTCTGCAAGCACACGCAGAAGGCACACAGGGACAGGACGCCCA
TGGAGCCCCGAAT

ACGCGTACGCGGCCGCTCGAGCAGAACTCATCTCAGAAGAGGATCTGGCAGCAATGATATCCTGGATT
ACAAGGATGACGACGATAAGGTTTAA



[View online »](#)

Protein Sequence: >RC227051 protein sequence
Red=Cloning site Green=Tags(s)

MEPEFLYDLLQLPKGVPEPPAEEELSKGGKKKYLPTSRKDPKFEELQKVLMEWINATLLPEHIVVRSLEE
 DMFDGLILHHLFQRLAALKLEAEDIALTATSQKHKLTVVLEAVNRSLQLEEWQAKWSVESIFNKDLLSTL
 HLLVALAKRFQPDLSLPTNVQVEVITIESTKSLKSEKLVEQLTEYSTDKDEPPKDVFDLFLAPEKVN
 AVKEAIVNFVNQKLDRLGLSVQNLDTQFADGVILLLLIGQLEGFFLHLKEFYLTNPSPAEMLHNVTLAL
 LLKDEGLLSCPVSPEDIVNKDAKSTLRVLYGLFCKHTQKAHRDRTPHGAPN

TRTRPLEQKLISEEDLAANDILDYKDDDDKV

Chromatograms: https://cdn.origene.com/chromatograms/mk6519_b01.zip

Restriction Sites: SgfI-MluI

Cloning Scheme:

Cloning sites used for ORF Shuttling:



* The last codon before the Stop codon of the ORF

ACCN: NM_001137606

ORF Size: 993 bp

OTI Disclaimer: The molecular sequence of this clone aligns with the gene accession number as a point of reference only. However, individual transcript sequences of the same gene can differ through naturally occurring variations (e.g. polymorphisms), each with its own valid existence. This clone is substantially in agreement with the reference, but a complete review of all prevailing variants is recommended prior to use. [More info](#)

OTI Annotation: This clone was engineered to express the complete ORF with an expression tag. Expression varies depending on the nature of the gene.

Components: The ORF clone is ion-exchange column purified and shipped in a 2D barcoded Matrix tube containing 10ug of transfection-ready, dried plasmid DNA (reconstitute with 100 ul of water).

Reconstitution Method:

1. Centrifuge at 5,000xg for 5min.
2. Carefully open the tube and add 100ul of sterile water to dissolve the DNA.
3. Close the tube and incubate for 10 minutes at room temperature.
4. Briefly vortex the tube and then do a quick spin (less than 5000xg) to concentrate the liquid at the bottom.
5. Store the suspended plasmid at -20°C. The DNA is stable for at least one year from date of shipping when stored at -20°C.

RefSeq: [NM_001137606.1](#), [NP_001131078.1](#)

RefSeq Size: 1991 bp

RefSeq ORF: 995 bp

Locus ID: 64098

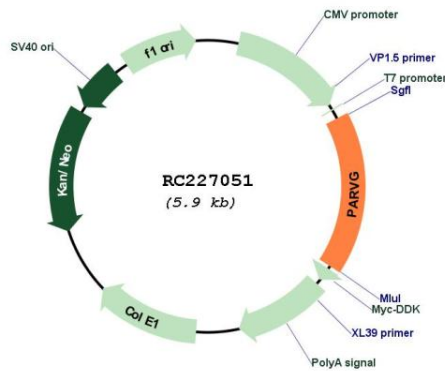
Cytogenetics: 22q13.31

Protein Pathways: Adherens junction, Arrhythmogenic right ventricular cardiomyopathy (ARVC), Dilated cardiomyopathy, Focal adhesion, Hypertrophic cardiomyopathy (HCM), Leukocyte transendothelial migration, Pathogenic Escherichia coli infection, Regulation of actin cytoskeleton, Tight junction, Vibrio cholerae infection, Viral myocarditis

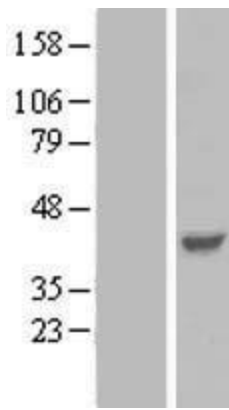
MW: 37.5 kDa

Gene Summary: Members of the parvin family, including PARVG, are actin-binding proteins associated with focal contacts.[supplied by OMIM, Aug 2004]

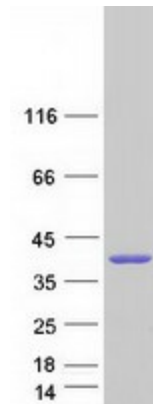
Product images:



Circular map for RC227051



Western blot validation of overexpression lysate (Cat# [LY427945]) using anti-DDK antibody (Cat# [TA50011-100]). Left: Cell lysates from untransfected HEK293T cells; Right: Cell lysates from HEK293T cells transfected with RC227051 using transfection reagent MegaTran 2.0 (Cat# [TT210002]).



Coomassie blue staining of purified PARVG protein (Cat# [TP327051]). The protein was produced from HEK293T cells transfected with PARVG cDNA clone (Cat# RC227051) using MegaTran 2.0 (Cat# [TT210002]).