

Product datasheet for **RC227035**

MYL12B (NM_001144946) Human Tagged ORF Clone

Product data:

Product Type: Expression Plasmids
Product Name: MYL12B (NM_001144946) Human Tagged ORF Clone
Tag: Myc-DDK
Symbol: MYL12B
Synonyms: MLC-B; MRLC2
Mammalian Cell Selection: Neomycin
Vector: pCMV6-Entry (PS100001)
E. coli Selection: Kanamycin (25 ug/mL)
ORF Nucleotide Sequence: >RC227035 representing NM_001144946
Red=Cloning site Blue=ORF Green=Tags(s)

TTTTGTAATACGACTCACTATAGGGCGGCCGGAATTCGTCGACTGGATCCGGTACCGAGGAGATCTGCC
GCC**CGGATCGCC**

ATGTCGAGCATGTTTGCCATGTTGACCAGTCACAGATTCAGGAGTTCAAAGAGGCCTTCAACATGATTG
ATCAGAACAGAGATGGCTTCATCGACAAGGAAGATTTGCATGATATGCTTGCTTCTAGGGAAGAAATCC
CACTGATGCATACCTTGATGCCATGATGAATGAGGCCCCAGGGCCATCAATTTACCATGTTCTGACC
ATGTTTGGTGAAGTAAATGGCACAGATCCTGAAGATGTCATCAGAAACGCCTTTGCTTGCTTTGATG
AAGAAGCAACAGGCACCATTAGGAAGATTACCTAAGAGAGCTGCTGACAACCATGGGGGATCGGTTTAC
AGATGAGGAAGTGGATGAGCTGTACAGAGAAGCACCTATTGACAAAAAGGGGAATTTCAATTACATCGAG
TTCACACGCATCCTGAAACATGGAGCCAAAGACAAAGATGAC

ACGCGTACGCGGCCGCTCGAGCAGAACTCATCTCAGAAGAGGATCTGGCAGCAAATGATATCCTGGATT
ACAAGGATGACGACGATAAGGTTTAA

Protein Sequence: >RC227035 representing NM_001144946
Red=Cloning site Green=Tags(s)

MSSMFAMFDQSQIQEFKEAFNMIDQNRDGFIDKEDLHDMLASLGNPTDAYLDAMMNEAPGINFTMFLT
MFGEKLNQDPEDVIRNAFACFDEEATGTIQEDYLRELLTTMGDRFTDEEVDLYREAPIDKKGNFYIE
FTRILKHGAKDKDD

TRTRPLEQKLISEEDLAANDILDYKDDDDKV

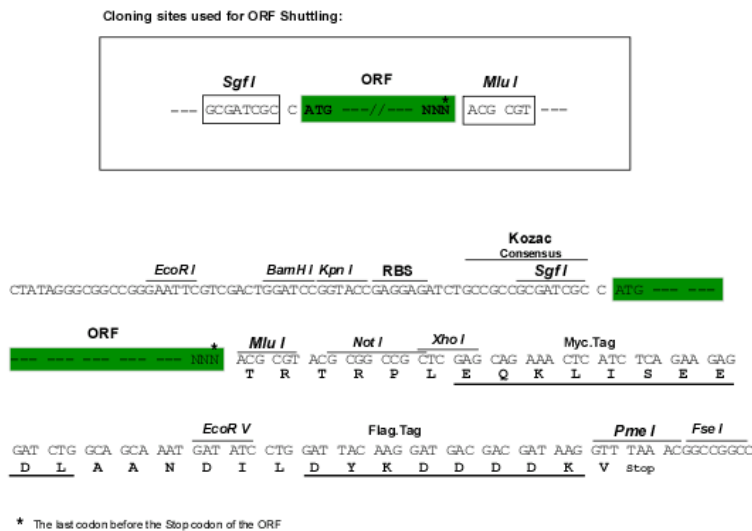
Chromatograms: https://cdn.origene.com/chromatograms/ja1452_f05.zip



[View online >](#)

Restriction Sites: SgfI-MluI

Cloning Scheme:



ACCN: NM_001144946

ORF Size: 462 bp

OTI Disclaimer: The molecular sequence of this clone aligns with the gene accession number as a point of reference only. However, individual transcript sequences of the same gene can differ through naturally occurring variations (e.g. polymorphisms), each with its own valid existence. This clone is substantially in agreement with the reference, but a complete review of all prevailing variants is recommended prior to use. [More info](#)

OTI Annotation: This clone was engineered to express the complete ORF with an expression tag. Expression varies depending on the nature of the gene.

Components: The ORF clone is ion-exchange column purified and shipped in a 2D barcoded Matrix tube containing 10ug of transfection-ready, dried plasmid DNA (reconstitute with 100 ul of water).

Reconstitution Method:

1. Centrifuge at 5,000xg for 5min.
2. Carefully open the tube and add 100ul of sterile water to dissolve the DNA.
3. Close the tube and incubate for 10 minutes at room temperature.
4. Briefly vortex the tube and then do a quick spin (less than 5000xg) to concentrate the liquid at the bottom.
5. Store the suspended plasmid at -20°C. The DNA is stable for at least one year from date of shipping when stored at -20°C.

RefSeq: [NM_001144946.1](#), [NP_001138418.1](#)

RefSeq ORF: 464 bp

Locus ID: 103910

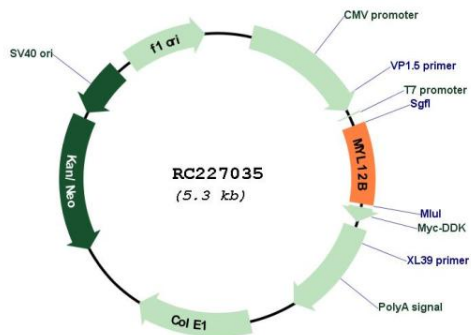
Cytogenetics: 18p11.31

Protein Pathways: Focal adhesion, Leukocyte transendothelial migration, Regulation of actin cytoskeleton, Tight junction

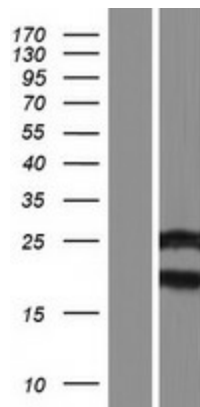
MW: 17.6 kDa

Gene Summary: The activity of nonmuscle myosin II (see MYH9; MIM 160775) is regulated by phosphorylation of a regulatory light chain, such as MRLC2. This phosphorylation results in higher MgATPase activity and the assembly of myosin II filaments (Iwasaki et al., 2001 [PubMed 11942626]). [supplied by OMIM, Mar 2008]

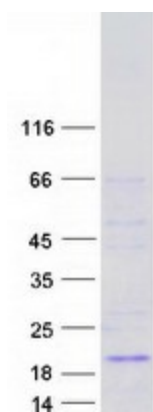
Product images:



Circular map for RC227035



Western blot validation of overexpression lysate (Cat# [LY428598]) using anti-DDK antibody (Cat# [TA50011-100]). Left: Cell lysates from untransfected HEK293T cells; Right: Cell lysates from HEK293T cells transfected with RC227035 using transfection reagent MegaTran 2.0 (Cat# [TT210002]).



Coomassie blue staining of purified MYL12B protein (Cat# [TP327035]). The protein was produced from HEK293T cells transfected with MYL12B cDNA clone (Cat# RC227035) using MegaTran 2.0 (Cat# [TT210002]).