

Product datasheet for RC226393

MET (NM_001127500) Human Tagged ORF Clone

Product data:

Product Type:	Expression Plasmids
Product Name:	MET (NM_001127500) Human Tagged ORF Clone
Tag:	Myc-DDK
Symbol:	MET
Synonyms:	AUTS9; c-Met; DFNB97; HGFR; RCCP2
Mammalian Cell Selection:	Neomycin
Vector:	pCMV6-Entry (PS100001)
E. coli Selection:	Kanamycin (25 ug/mL)
ORF Nucleotide Sequence:	>RC226393 representing NM_001127500 Red=Cloning site Blue=ORF Green=Tags(s)

TTTTGTAATACGACTCACTATAGGGCGCCGGGAATTCGTCGACTGGATCCGGTACCGAGGAGATCTGCC
GCC**CGATCGCC**

ATGAAGGCCCCCGCTGTGCTTGCACCTGGCATCCTCGTGCTCCTGTTTACCTTGGTGCAGAGGAGCAATG
GGGAGTGTAAAGAGGCACTAGCAAAGTCCGAGATGAATGTGAATATGAAGTATCAGCTTCCCACTTCCAC
CGCGGAAACACCCATCCAGAATGTCATTCTACATGAGCATCACATTTTCCCTTGGTCCACTAACTACATT
TATGTTTTAAATGAGGAAGACCTCAGAAGTTGCTGAGTACAAGACTGGCCTGTGCTGGAACACCCAG
ATTGTTTCCCATGTCAGGACTGCAGCAGCAAAGCCAATTTATCAGGAGGTGTTTGGAAAGATAACATCAA
CATGGCTCTAGTTGTCGACACCTACTATGATGATCAACTATTAGCTGTGGCAGCGTCAACAGAGGGACC
TGCCAGCGACATGTCTTTCCCAACAATCATACTGCTGACATACAGTCGGAGGTTCACTGCATATTCTCCC
CACAGATAGAAGAGCCCAGCCAGTGTCTGACTGTGTGGTGAAGCCCTGGGAGCCAAAGTCTTTTCATC
TGTAAGGACCGGTTCACTCAACTCTTTGTAGGCAATACCATAAATCTTCTTATTTCCAGATCATCCA
TTGCATTCGATATCAGTGAGAAGGCTAAAGGAAACGAAAGATGGTTTTATGTTTTGACGGACAGTCTCT
ACATTGATGTTTTACCTGAGTTCAGAGATTCTTACCCATTAAGTATGTCATGCCTTTGAAAGCAACAA
TTTTATTTACTTCTTGACGGTCCAAAGGAAACTCTAGATGCTCAGACTTTTACACAAGAATAATCAGG
TTCTGTTCCATAAACTCTGGATTGCATTCTACATGAAAATGCCCTGGAGTGTATTCTCACAGAAAAGA
GAAAAAGAGATCCACAAGAAGGAAAGTGTAAATATACTTACAGGCTGCGTATGTCAGCAAGCCTGGGGC
CCAGCTTGCTAGACAAATAGGAGCCAGCCTGAATGATGACATTCTTTTCGGGGTGTTCGCACAAAGCAAG
CCAGATTCTGCCGAACCAATGGATCGATCTGCCATGTGTGCATTCCCTATCAAATATGTCAACGACTTCT
TCAACAAGATCGTCAACAAAAACAATGTGAGATGTCTCCAGATTTTTACGGACCAATCATGAGCACTG
CTTTAATAGGACACTTCTGAGAAATTCATCAGGCTGTGAAGCGCGCCGTGATGAATATCGAACAGAGTTT
ACCACAGCTTTGCAGCGGTTGACTTATTCATGGGTCAATTCAGCGAAGTCTCTTAACATCTATATCCA
CCTTCATTAAGGAGACCTCACCATAGCTAATCTTGGGACATCAGAGGGTCGCTTCATGCAGGTTGTGGT
TTCTCGATCAGGACCATCAACCCTCATGTGAATTTCTCTGGACTCCCATCCAGTGTCTCCAGAAGT



[View online »](#)

ATTGTGGAGCATACATTAACCAAAATGGCTACACACTGGTTATCACTGGGAAGAAGATCACGAAGATCC
CATTGAATGGCTTGGGCTGCAGACATTTCCAGTCTGCAGTCAATGCCTCTGCCCCACCCTTTGTTC
GTGTGGCTGGTGGCCACGACAAATGTGTGCGATCGGAGGAATGCCTGAGCGGGACATGGACTCAACAGATC
TGTCTGCCTGCAATCTACAAGTTTTCCAAATAGTGCACCCCTGAAGGAGGGACAAGGCTGACCATAT
GTGGCTGGGACTTTGGATTTCCGAGGAATAATAAATTTGATTTAAAGAAAAGTACAGTTCTCCTTGGAAA
TGAGAGCTGCACCTTGACTTTAAGTGAGAGCACGATGAATACATTGAAATGCACAGTTGGTCTGCCATG
AATAAGCATTTCATATGTCCATAATTTCAAATGGCCACGGGACAACAATAACAGTACATTCTCCT
ATGTGGATCCTGTAATAACAAGTATTTCCGCGAAATACGGTCTATGGCTGGTGGCACTTTACTTACTTT
AACTGGAAATTACCTAAACAGTGGGAATTTAGACACATTTCAATTGGTGGAAAAACATGACTTTAAAA
AGTGTGTCAAACAGTATTCTTGAATGTTATACCCAGCCCAAACCATTTCAACTGAGTTTGTGTTAAAT
TGAAAAATTGACTTAGCCAACCGAGAGACAAGCATCTTCAGTTACCGTGAAGATCCCATTGTCTATGAAAT
TCATCCAACCAAACTTTTATTAGTACTTGGTGGAAAGAACCCTCAACATTGTCAGTTTTCTATTTTGC
TTTGCCAGTGGTGGGAGCACAATAACAGGTGTTGGGAAAAACCTGAATTCAGTTAGTGTCCCGAGAATGG
TCATAAATGTGCATGAAGCAGGAAGGAACCTTACAGTGGCATGTCAACATCGCTCTAATTCAGAGATAAT
CTGTTGTACCCTCCTTCCCTGCAACAGCTGAATCTGCAACTCCCCTGAAAACCAAAGCCTTTTTCATG
TTAGATGGGATCCTTTCCAAATACTTTGATCTCATTTATGTACATAATCCTGTGTTAAAGCCTTTTGAAA
AGCCAGTGATGATCTCAATGGGCAATGAAAATGTACTGGAAATTAAAGGAAATGATATTGACCCTGAAGC
AGTTAAAGGTGAAGTGTTAAAAGTTGAAAATAAGAGCTGTGAGAAATATACTTACATTCTGAAGCCGTT
TTATGCACGGTCCCCAATGACCTGCTGAAATGAAACAGCGAGCTAAATATAGAGTGAAGCAAGCAATTT
CTTCAACCGTCTTTGGAAAAGTAATAGTTCAACCAGATCAGAATTTACAGGATTGATTGCTGGTGTGT
CTCAATATCAACAGCACTGTTATTACTACTTGGGTTTTCTGTGGCTGAAAAAGAGAAAGCAAAATAAA
GATCTGGGAGTGAATAGTTGCTACGATGCAAGAGTACACACTCCTCATTTGGATAGGCTTGTAAAGTG
CCCGAAGTGAAGCCCAACTACAGAAATGGTTTCAAATGAATCTGTAGACTACCGAGCTACTTTTCCAGA
AGATCAGTTTCTAATTCATCTCAGAACGGTTCATGCCGACAAGTGCAGTATCCTCTGACAGACATGTCC
CCCATCTAACTAGTGGGACTCTGATATATCCAGTCCATTACTGCAAAATACTGTCCACATTGACCTCA
GTGCTCTAAATCCAGAGCTGGTCCAGGCAGTGCAGCATGTAGTATTGGGCCAGTAGCCTGATTGTGCA
TTTCAATGAAGTCATAGGAAGAGGGCATTTTGGTTGTGTATATCATGGGACTTTGTTGGACAATGATGGC
AAGAAAATTCACTGTGCTGTGAAATCCTTGAACAGAATCACTGACATAGGAGAAGTTTCCCAATTTCTGA
CCGAGGGAATCATCATGAAAGATTTTAGTCATCCCAATGTCTCTCGCTCCTGGGAATCTGCCTGCGAAG
TGAAGGGTCTCCGCTGGTGGTCTACCATACATGAAACATGGAGATCTTCCGAAATTTCAATCGAAATGAG
ACTCATAATCCAAGTAAAAGATCTTATTGGCTTTGGTCTTCAAGTAGCCAAAGGCATGAAATATCTTG
CAAGCAAAAAGTTTGTCCACAGAGACTTGGCTGCAAGAACTGTATGCTGGATGAAAAATTCACAGTCAA
GGTTGCTGATTTTGGTCTTGCCAGAGACATGTATGATAAAGAATACTATAGTGTACACAACAAAACAGGT
GCAAAGCTGCCAGTGAAGTGGATGGCTTTGAAAAGTCTGCAAACCTCAAAGTTTACCACCAAGTCAGATG
TGTGGTCTTTGGCGTCTCCTCTGGGAGCTGATGACAAGAGGAGCCCCACCTTATCCTGACGTAACAC
CTTTGATATAACTGTTTACTTGTGCAAGGGAGAAGACTCCTACAACCCGAATACTGCCAGACCCCTTA
TATGAAGTAATGCTAAAATGCTGGCACCCTAAAGCCGAAATGCGCCATCCTTTTCTGAACTGGTGTCCC
GGATATCAGCAATCTTCTACTTTTATTGGGGAGCACTATGTCCATGTGAACGCTACTTATGTGAACGT
AAAATGTGTCGCTCCATATCCTTCTGTGTGTCATCAGAAGATAACGCTGATGATGAGGTGGACACACGA
CCAGCCTCCTTCTGGGAGACATCA

ACGCGTACGCGGCCGCTCGAGCAGAACTCATCTCAGAAGAGGATCTGGCAGCAATGATATCCTGGATT
ACAAGGATGACGACGATAAGGTTTAA

Protein Sequence: >RC226393 representing NM_001127500
 Red=Cloning site Green=Tags(s)

MKAPAVLAPGILVLLFTLVQRSNGECKEALAKSEMNVNMKYQLPNFTAETPIQNVILHEHHIFLGATNYI
 YVLNEEDLQKVAEYKTGPVLEHPDCFCQDCSSKANLSGGVWKNINMALVVDYDDQLISCGSVNRGT
 CQRHVFPNHHTADIQSEVHCIFSPQIEEPSQPCDCVVSALGAKVLSVKDRFINFFVGNINSSYFPDHP
 LHSISVRRLKETKDGFMFLTDQSYIDVLPFRDSYPIKYVHAFESNNFIYFLTVQRETLDATQTFHTRIIR
 FCSINSLHSYMEPLECILTEKRKRSTKKEVFNILQAAYVSKPGAQLARQIGASLNDLILFGVFAQSK
 PDAEPMDRSAMCAFPKIYVNDFFNKIVNKNVRLQHFYGNHEHCFNRTLNRSSGCEARRDEYRTEF
 TTALQRVDLFGQFSEVLLTSISTFIKGLTIANLGTSEGRFMQVVVSRSGPSTPHVNFLLDHPVSPEV
 IVEHTLNQNGYTLVITGKKITKIPLNGLGCRHFQSCSQCLSAPPFVQCGWCHDKCVRSEECLSGTWTQOI
 CLPAIYKVPNSAPLEGGTRLICGWDFGFRNNKFDLKKTRVLLGNESCTLTLSESTMNTLKCTVGPAM
 NKHFNMIIISNGHGTQYSTFSYVDPVITISIPKYGPMAGGTLLTLGNYLNSGNSRHISIGGKCTLK
 SVSNSILECYTPAQTISTEFAVKLKIDLANRETSIFSYPREDPIVVEIHPKTSFISTWWEKPLNIVSFLFC
 FASGGSTITGVGNLNSVSVPRMVINVHEAGRNFVACQHRNSSEIICCTTPSLQQLNLQLPLKTKAFFM
 LDGILSKYFDLIYVHNPVFKPFKPYMISMGNENVLEIKGNDIDPEAVKGEVLKVGKSCENIHLHSEAV
 LCTVPNDLLKLNSELNIEWKQAISSTVLGKIVIQPDQNFGLIAGVVSISTALLLLGFFLWLKKRQKIK
 DLGSELVRYDARVHTPHLDRLVSARSVSPTEMVSNESVDYRATFPEDQFPNSSQNGSCRQVQYPLTDM
 PILTSGSDISSPLLQNTVHIDLALNPELVQAVQHVVIGPSSLIVHFNEVIGRGHFGCVYHGTLDDNDG
 KKIHCYKSLNRITDIGEVSQFLTEGIIMKDFSHPNVLSLLGICLRSEGSPLVPLPYMKHGLRNFIRNE
 THNPTVKDLIGFLQVAKGMKYLASKKFVHRDLAARNCMLDEKFTVKVADFLGARDMYDKEYYSVHNKTG
 AKLPVKWMALESQTQKFTTKSDVWSFGVLLWELMTRGAPPYPDVNTFDITVYLLQGRLLQPEYCPDPL
 YEVMLKCVHPKAEMRPSFSELVSRI SAIFSTF IGEHYVHVNATYVNVKCVAPYPSLLSSEDNADDEVDT
 RTRP

TRTRPLEQKLISEEDLAANDILDYKDDDDKV

Restriction Sites:

SgfI-MluI

Cloning Scheme:

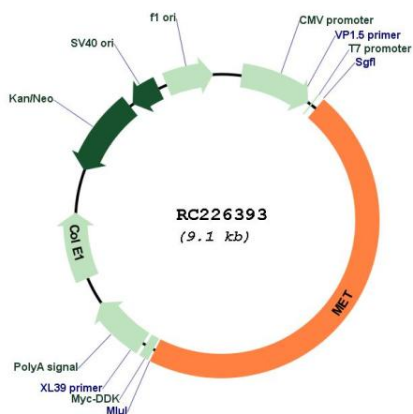


ACCN: NM_001127500

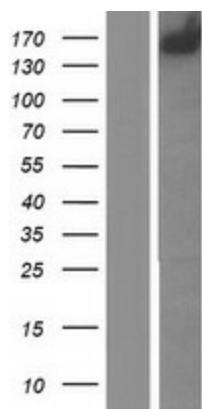
ORF Size: 4224 bp

OTI Disclaimer:	The molecular sequence of this clone aligns with the gene accession number as a point of reference only. However, individual transcript sequences of the same gene can differ through naturally occurring variations (e.g. polymorphisms), each with its own valid existence. This clone is substantially in agreement with the reference, but a complete review of all prevailing variants is recommended prior to use. More info
OTI Annotation:	This clone was engineered to express the complete ORF with an expression tag. Expression varies depending on the nature of the gene.
Components:	The ORF clone is ion-exchange column purified and shipped in a 2D barcoded Matrix tube containing 10ug of transfection-ready, dried plasmid DNA (reconstitute with 100 ul of water).
Reconstitution Method:	<ol style="list-style-type: none">1. Centrifuge at 5,000xg for 5min.2. Carefully open the tube and add 100ul of sterile water to dissolve the DNA.3. Close the tube and incubate for 10 minutes at room temperature.4. Briefly vortex the tube and then do a quick spin (less than 5000xg) to concentrate the liquid at the bottom.5. Store the suspended plasmid at -20°C. The DNA is stable for at least one year from date of shipping when stored at -20°C.
RefSeq:	NM_001127500.3
RefSeq ORF:	4227 bp
Locus ID:	4233
UniProt ID:	P08581
Cytogenetics:	7q31.2
Protein Families:	Druggable Genome, Protein Kinase, Transmembrane
Protein Pathways:	Adherens junction, Axon guidance, Colorectal cancer, Cytokine-cytokine receptor interaction, Endocytosis, Epithelial cell signaling in Helicobacter pylori infection, Focal adhesion, Melanoma, Pathways in cancer, Renal cell carcinoma
MW:	157.71 kDa
Gene Summary:	This gene encodes a member of the receptor tyrosine kinase family of proteins and the product of the proto-oncogene MET. The encoded preproprotein is proteolytically processed to generate alpha and beta subunits that are linked via disulfide bonds to form the mature receptor. Further processing of the beta subunit results in the formation of the M10 peptide, which has been shown to reduce lung fibrosis. Binding of its ligand, hepatocyte growth factor, induces dimerization and activation of the receptor, which plays a role in cellular survival, embryogenesis, and cellular migration and invasion. Mutations in this gene are associated with papillary renal cell carcinoma, hepatocellular carcinoma, and various head and neck cancers. Amplification and overexpression of this gene are also associated with multiple human cancers. [provided by RefSeq, May 2016]

Product images:



Circular map for RC226393



Western validation with an anti-DDK antibody; L: Control HEK293 lysate R: Over-expression lysate