

## Product datasheet for **RC226293**

### Eph receptor A7 (EPHA7) (NM\_004440) Human Tagged ORF Clone

#### Product data:

Product Type:	Expression Plasmids
Product Name:	Eph receptor A7 (EPHA7) (NM_004440) Human Tagged ORF Clone
Tag:	Myc-DDK
Symbol:	Eph receptor A7
Synonyms:	EHK-3; EHK3; EK11; HEK11
Mammalian Cell Selection:	Neomycin
Vector:	pCMV6-Entry (PS100001)
E. coli Selection:	Kanamycin (25 ug/mL)
ORF Nucleotide Sequence:	>RC226293 representing NM_004440 Red=Cloning site Blue=ORF Green=Tags(s)

TTTTGTAATACGACTCACTATAGGGCGGCCGGAATTCGTCGACTGGATCCGGTACCGAGGAGATCTGCC  
GCC**CGATCGCC**

ATGGTTTTTCAAACCTCGGTACCCCTTCATGGATTATTTTATGCTACATCTGGCTGCTCCGCTTTGCACACA  
CAGGGGAGGGCGCAGGCTGCGAAGGAAGTACTACTGCTGGATTCTAAAGCACAACAACAGAGTTGGAGTG  
GATTTCTCTCCACCAATGGGTGGGAAGAAATTAGTGGTTTGGATGAGAACTATACCCCGATACGAACA  
TACCAGGTGTCCAAGTCATGGAGCCCAACAAAACAACCTGGCTGCGGACTAACTGGATTCCAAAGGCA  
ATGCACAAAGGATTTTTGTAGAATTGAAATTCACCTGAGGGATTGTAACAGTCTTCTGGAGTACTGGG  
AACTTGAAGGAAACATTTAATTTGTAATTTGTAATTTGTAATTTGTAATTTGTAATTTGTAATTTGTAATTT  
AACCTCTATGTAATAATAGACACCATTCGTCAGATGAAAGTTTTACCAAGGTGACCTTGGTGAAGAA  
AGATGAAGCTTAACACTGAGGTGAGAGAGATTGGACCTTTGTCCAAAAGGGATTCTATCTTGCCTTTCA  
GGATGTAGGGGCTTCATAGCTTTGGTTTCTGTCAAAGTGTACTACAAGAAGTGTGGTCCATTATTGAG  
AACTTAGCTATCTTCCAGATACAGTACTGGTTCAGAATTTTCTCTTTAGTCGAGGTTTCGAGGGACAT  
GTGTCAGCAGTGCAGAGGAAGAAGCGGAAAACGCCCCAGGATGCACTGCAGTGCAGAAGGAGAATGGTT  
AGTGCCCATTTGAAAATGTATCTGCAAAGCAGGCTACCAGCAAAAAGGAGACACTTGTGAACCTGTGGC  
CGTGGTTCTACAAGTCTTCTCTCAAGATCTTCAGTGTCTCGTTGTCCAACACTCACAGTTTTTCTGATA  
AAGAAGGCTCCTCCAGATGTGAATGTGAAGATGGGATTACAGGGCTCCATCTGACCCACCATACGTTGC  
ATGCACAAGGCCCTCCATCTGCACCACAGAACCTCATTTCACATCAACCAAACACAGTAAAGTTTGGAA  
TGGAGTCTCCTGCAGACAATGGGGGAAGAAACGATGTGACCTACAGAATATTGTGAAGCGGTGCAGTT  
GGGAGCAGGGCGAATGTGTTCCCTGTGGGAGTAACATTGGATACATGCCCCAGCAGACTGGATTAGAGGA  
TAACTATGTCAGTGTGACCTGCTAGCCACGCTAATTATACTTTTGAAGTTGAAGCTGTAATGGA  
GTTTCTGACTTAAGCCGATCCCAGAGGCTTTTGTGCTGTCAGTATCACCAGTGGTCAAGCAGCTCCCT  
CGCAAGTGAGCGGAGTAATGAAGGAGAGAGTACTGCAGCGGAGTGTGAGCTTTCTGCCAGGAACCAGA  
GCATCCCAATGGAGTCATCACAGAATATGAAATCAAGTATTACGAGAAAGATCAAAGGGAACGGACTAC



TCAACAGTAAAAACCAAGTCTACTTCAGCCTCCATTAATAATCTGAAACCAGGAACAGTGTATGTTTTCC  
 AGATTCGGGCTTTTACTGCTGCTGGTTATGAAATACAGTCCCAGACTTGATGTTGCTACACTAGAGGA  
 AGCTACAGGTAATAATGTTGAAGCTACAGCTGTCTCCAGTGAACAGAATCCTGTTATTATCATTGCTGTG  
 GTTGTGTAGCTGGGACCATCATTTTGGTGTTCATGGTCTTTGGCTTCATCATTGGGAGAAGGCACTGTG  
 GTTATAGCAAAGCTGACCAAGAAGGCGATGAAGAGCTTACTTTTCATTTAAATTTCCAGGCACAAAAC  
 CTACATTGACCCTGAAACCTATGAGGACCCAAATAGAGCTGCCATCAATTCGCCAAGGAGCTAGATGCC  
 TCCTGTATTAATAATGAGCGTGTATTGGTGCAGGAGAATTCGGTGAAGTCTGCAGTGGCCGTTTGAAC  
 TTCCAGGGAAAAGAGATGTTGCAGTAGCCATAAAAACCCTGAAAGTTGGTTACACAGAAAAACAAAGGAG  
 AGACTTTTTGTGTGAAGCAAGCATCATGGGCGAGTTTGACCACCCGAATGTTGTCCATTTGGAAGGGTT  
 GTTACAAGAGGGAAAACAGTCATGATAGTAATAGAGTTCATGGAAAATGGAGCCCTAGATGCATTTCTCA  
 GAAAACATGATGGGCAATTTACAGTCATTCAGTTAGTAGGAATGCTGAGAGGAATTGCTGCTGGAATGAG  
 ATATTTGGCTGATATGGGATATGTTACAGGGACCTTCAGCTCGCAATATTCTTGTCAACGCAATCTC  
 GTTTGTAAAGTGCAGATTTTGGCTGTCCGAGTTATAGAGGATGATCCAGAAGCTGTCTATACTA  
 CTGGTGGAAAAATCCAGTAAGGTGGACAGCACCCGAAGCCATCCAGTACCGGAAATTCACATCAGCCAG  
 TGATGTATGGAGCTATGGAATAGTCATGTGGGAAGTTATGTCTTATGGAGAAAGACCTTATTGGGACATG  
 TCAATCAAGATGTTATAAAGCAATAGAAGAAGTTATCGTTTACCAGCACCCATGGACTGCCAGCTG  
 GCCTTACCAGCTAATGTTGGATTGTTGGCAAAAGGAGCGTGTGAAAGGCCAAAATTTGAACAGATAGT  
 TGGAAATCTAGACAAAATGATTCGAAACCCAAATAGTCTGAAAACCTCCCTGGGAACTTGTAGTAGGCCA  
 ATAAGCCCTCTTCTGGATCAAAACACTCCTGATTTCACTACCTTTTGTTCAGTTGGAGAATGGCTACAAG  
 CTATTAAGATGGAAGATATAAGATAATTTACGGCAGCTGGCTACAATTCCTTGAATCAGTAGCCAG  
 GATGACTATTGAGGATGTGATGAGTTTAGGGATCACACTGGTTGGTCATCAAAAGAAAATCATGAGCAGC  
 ATTCAGACTATGAGAGCACAAATGCTACATTTACATGGAAGTGGCATTCAAGT

ACGCGTACGCGGCGCTCGAGCAGAACTCATCTCAGAAGAGGATCTGGCAGCAAATGATATCCTGGATT  
 ACAAGGATGACGACGAT AAGTTTAA

**Protein Sequence:**

>RC226293 representing NM\_004440  
 Red=Cloning site Green=Tags(s)

MVFQTRYPSWIILCYIWLLRFAHTGEAQAQKEVLLLLDSKAQQTELEWISSPPNGWEEISGLDENYPIRT  
 YQVCQVMEPNQNNLRTNWI SKGNAQRIFVELKFTLRDCNSLPGVLGTCKETFNLYYYETDYDTRNIRE  
 NLYVKIDTIAADESFTQDGLGERMKLNTEVREIGPLSKKGFYLAQFDVGACIALVSVKVVYKCKWSIE  
 NLAIFPDVTGSEFSSLVEVRGTCVSSAEEEAENAPRMHCSAEGEWLVPIGKICKAGYQQKGDTCPECG  
 RGFYKSSSQDLQCSRPCTHSFSDKEGSSRCECEDGYRAPSDPPYVACTRPPSAPQNLIFNINQTTVSLE  
 WSPPADNGGRNDVTYRILCKRCSWEQGEVPCGSNIGYMPQQTGLEDNVYTVMDLLAHANYTFEVEAVNG  
 VSDLRSRQRLFAAVSITGQAAPSQVSGVMKERVLRQSVELSWQEPEHPNGVITEYEIKYYEKDQRERTY  
 STVTKTSTASINNLKPGTVYVFQIRAF TAAGYGNYSRPLDVATLEEATGKMFEATAVSSEQNPVIIIAV  
 VAVAGTIIILVFMVFGFIIGRRHCGYSKADQEGDEELYFHFKFPGTKYIDPETYEDPNRAVHQFAKELDA  
 SCIKIERVIGAGEFGEVCSGRLKLPGRDVAVAIKTLKVGYTEKQRRDFLCEASIMGQFDHPNVVHLEGV  
 VTRGKPVMIIVIEFMENGALDAFLRKHDGQFTVIQLVGMLRGI AAGMRYLADMGYVHRDLAARNILVNSNL  
 VCKVSDFLSRVIEDDPEAVYTTTGGKIPVRWTAPEAIQYRKFTSASDVWSYGIWMVEVMSYGERPYWDM  
 SNQDVIIKAIIEGYRLPAPMDCPAGLHQLMLDCWQKERAERPKFEQIVGILDKMIRNPNSLKTPLGTCSRP  
 ISPLLDQNTPDFTTFCVGEWLQA IKMERYKDNFTAAGYNSLESVARMTIEDVMSLGITLVGHQKKIMSS  
 IQTMRAQMLHLHGTGIQV

TRTRPLEQKLI SEEDLAANDILDYKDDDDKV

**Chromatograms:**

[https://cdn.origene.com/chromatograms/mg3231\\_e03.zip](https://cdn.origene.com/chromatograms/mg3231_e03.zip)

**Restriction Sites:**

SgfI-MluI

Cloning Scheme:



ACCN: NM\_004440

ORF Size: 2994 bp

OTI Disclaimer: Due to the inherent nature of this plasmid, standard methods to replicate additional amounts of DNA in E. coli are highly likely to result in mutations and/or rearrangements. Therefore, OriGene does not guarantee the capability to replicate this plasmid DNA. Additional amounts of DNA can be purchased from OriGene with batch-specific, full-sequence verification at a reduced cost. Please contact our customer care team at [custsupport@origene.com](mailto:custsupport@origene.com) or by calling 301.340.3188 option 3 for pricing and delivery.

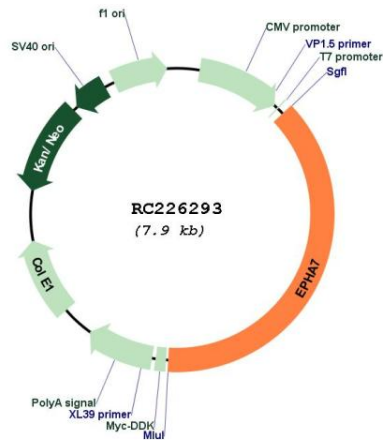
The molecular sequence of this clone aligns with the gene accession number as a point of reference only. However, individual transcript sequences of the same gene can differ through naturally occurring variations (e.g. polymorphisms), each with its own valid existence. This clone is substantially in agreement with the reference, but a complete review of all prevailing variants is recommended prior to use. [More info](#)

OTI Annotation: This clone was engineered to express the complete ORF with an expression tag. Expression varies depending on the nature of the gene.

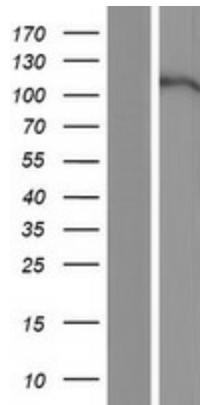
Components: The ORF clone is ion-exchange column purified and shipped in a 2D barcoded Matrix tube containing 10ug of transfection-ready, dried plasmid DNA (reconstitute with 100 ul of water).

<b>Reconstitution Method:</b>	<ol style="list-style-type: none"><li>1. Centrifuge at 5,000xg for 5min.</li><li>2. Carefully open the tube and add 100ul of sterile water to dissolve the DNA.</li><li>3. Close the tube and incubate for 10 minutes at room temperature.</li><li>4. Briefly vortex the tube and then do a quick spin (less than 5000xg) to concentrate the liquid at the bottom.</li><li>5. Store the suspended plasmid at -20°C. The DNA is stable for at least one year from date of shipping when stored at -20°C.</li></ol>
<b>RefSeq:</b>	<a href="#">NM_004440.4</a>
<b>RefSeq ORF:</b>	2997 bp
<b>Locus ID:</b>	2045
<b>UniProt ID:</b>	<a href="#">Q15375</a>
<b>Cytogenetics:</b>	6q16.1
<b>Domains:</b>	pkinase, EPH_lbd, TyrKc, SAM, S_TKc, FN3
<b>Protein Families:</b>	Druggable Genome, Protein Kinase, Transmembrane
<b>Protein Pathways:</b>	Axon guidance
<b>MW:</b>	111.9 kDa
<b>Gene Summary:</b>	<p>This gene belongs to the ephrin receptor subfamily of the protein-tyrosine kinase family. EPH and EPH-related receptors have been implicated in mediating developmental events, particularly in the nervous system. Receptors in the EPH subfamily typically have a single kinase domain and an extracellular region containing a Cys-rich domain and 2 fibronectin type III repeats. The ephrin receptors are divided into 2 groups based on the similarity of their extracellular domain sequences and their affinities for binding ephrin-A and ephrin-B ligands. Increased expression of this gene is associated with multiple forms of carcinoma. Alternative splicing results in multiple transcript variants. [provided by RefSeq, Dec 2013]</p>

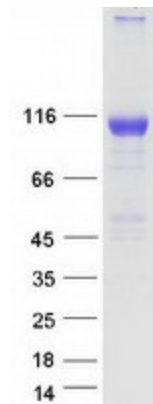
Product images:



Circular map for RC226293



Western blot validation of overexpression lysate (Cat# [LY429202]) using anti-DDK antibody (Cat# [TA50011-100]). Left: Cell lysates from untransfected HEK293T cells; Right: Cell lysates from HEK293T cells transfected with RC226293 using transfection reagent MegaTran 2.0 (Cat# [TT210002]).



Coomassie blue staining of purified EPHA7 protein (Cat# [TP326293]). The protein was produced from HEK293T cells transfected with EPHA7 cDNA clone (Cat# RC226293) using MegaTran 2.0 (Cat# [TT210002]).