

Product datasheet for **RC225989**

Ezrin (EZR) (NM_001111077) Human Tagged ORF Clone

Product data:

Product Type:	Expression Plasmids
Product Name:	Ezrin (EZR) (NM_001111077) Human Tagged ORF Clone
Tag:	Myc-DDK
Symbol:	Ezrin
Synonyms:	CVIL; CVL; HEL-S-105; VIL2
Mammalian Cell Selection:	Neomycin
Vector:	pCMV6-Entry (PS100001)
E. coli Selection:	Kanamycin (25 ug/mL)



[View online »](#)

ORF Nucleotide Sequence:

>RC225989 ORF sequence
 Red=Cloning site Blue=ORF Green=Tags(s)

TTTTGTAATACGACTCACTATAGGGCGGCCGGAATTCGTCGACTGGATCCGGTACCGAGGAGATCTGCC
 GCC**CGCATCGCC**

ATGCCGAAACCAATCAATGTCCGAGTTACCACCATGGATGCAGAGCTGGAGTTTGAATCCAGCCAAATA
 CAACTGGAAAACAGCTTTTTGATCAGGTGGTAAAGACTATCGGCCTCCGGGAAGTGGTACTTTGGCCT
 CCACTATGTGGATAATAAAGGATTTCTACCTGGCTGAAGCTGGATAAGAAGGTGTCTGCCCAGGAGGTC
 AGGAAGGAGAATCCCCTCAGTTCAAGTTCGGGCCAAGTTCTACCCTGAAGATGTGGTGAGGAGCTCA
 TCCAGGACATCACCCAGAACTTTTCTTCTCCAAGTGAAGGAAGGAATCCTTAGCGATGAGATCTACTG
 CCCCCCTGAGACTGCCGTGCTCTGGGGTCTACGCTGTGCAGGCCAAGTTGGGGACTACAACAAAGAA
 GTGCACAAGTCTGGGTACCTCAGCTCTGAGCGGCTGATCCCTCAAAGAGTGATGGACCAGCACAACTTA
 CCAGGGACCAGTGGGAGGACCGGATCCAGGTGTGGCATGCGGAACACCGTGGGATGCTCAAAGATAATGC
 TATGTTGGAATACCTGAAGATTGCTCAGGACCTGGAAATGTATGGAATCAACTATTTTCGAGATAAAAAAC
 AAGAAAGGAACAGACCTTTGGCTTGGAGTTGATGCCCTTGGACTGAATATTTATGAGAAAGATGATAAGT
 TAACCCCAAAGATTGGCTTTCTTGGAGTGAAATCAGGAACATCTCTTTCAATGACAAAAAGTTTGTTCAT
 TAAACCCATCGACAAGAAGGCACCTGACTTTGTGTTTTATGCCCCACGTCTGAGAATCAACAAGCGGATC
 CTGCAGCTCTGCATGGGCAACCATGAGTTGTATATGCGCCGAGGAAAGCCTGACACCATCGAGGTGCAGC
 AGATGAAGGCCAGGCCCGGGAGGAGAAGCATCAGAAGCAGCTGGAGCGGCAACAGCTGGAAACAGAGAA
 GAAAAGGAGAGAAACCGTGGAGAGAGAGAAAGAGCAGATGATGCGCGAGAAGGAGGAGTTGATGCTGCGG
 CTGCAGGACTATGAGGAGAAGACAAGAAGGCAGAGAGAGAGCTCTCGGAGCAGATTAGAGGGCCCTGC
 AGCTGGAGGAGGAGGAAGCGGCCACAGGAGGAGGCCGAGCGCCTAGAGGCTGACCGCTATGGCTCGACT
 CGGGGCTAAGGAGGAGCTGGAGAGACAGGCGGTGGATCAGATAAAGAGCCAGGAGCAGCTGGCTCGGAG
 CTTGCAGAATACACTGCCAAGATTGCCCTCCTGGAAGAGGCGGAGGCCAAGGAGGATGAAGTTGAAG
 AGTGGCAGCACAGGGCCAAAGAAGCCAGGATGACCTGGTGAAGACCAAGGAGGAGCTGCACCTGGTGTGAT
 GACAGCACCCCGCCCCACCACCCCGTGTACGAGCCGGTGTGCTACCATGTCCAGGAGAGCTTGCAG
 GATGAGGGCGCAGAGCCACGGGCTACAGCGGGAGCTGTCTAGTGAGGGCATCCGGGATGACCGCAATG
 AGGAGAAGCGCATCACTGAGGCAGAGAAGAAGCAGCGTGTGCAGCGCAGCTGCTGACGCTGAGCAGCGA
 GCTGTCCAGGCCGAGATGAGAATAAGAGGACCCACAATGACATCATCCACAACGAGAACATGAGGCAA
 GGCCGGGACAAGTACAAGACGCTGCGGCAGATCCGGCAGGGCAACACCAAGCAGCGCATCGACGAGTTCC
 AGGCCCTG

ACGCGTACGCGGCCGCTCGAGCAGAAACTCATCTCAGAAGAGGATCTGGCAGCAAATGATATCCTGGATT
 ACAAGGATGACGACGATAAGGTTTAA

Protein Sequence:

>RC225989 protein sequence
 Red=Cloning site Green=Tags(s)

MPKPINVRVTMDAELEFAIQPNTTGKQLFDQVVKITGLREVWYFGLHYVDNKGFPWLKLDKKVSAQEV
 RKENPLQFKFRAKFPEDVAEELIQDITQKLFLLQVKEGILSDEIYCPPETAVLLGSYAVQAKFGDYNKE
 VHKSGYLSSERLIPQRVMDQHLTRDQWEDRIQVWHAHRGMLKDNAMLEYLKIAQDLEMYGINYFEIKN
 KKGTDLWLGVDALGLNIYEKDDKLPKIGFPWSEIRNISFNDKKFVIKPIDKKAPDFVYAPRLRINKRI
 LQLCMGNHEL YMRRRKPDTEVQQMKAQAREEKHQKQLERQOLETEKKRRETVEREKEQMMREKEELMLR
 LQDYEEKTKKAERELSEIQRALQLEEERKRAQEEAERLEADRMAALRAKEELERQAVDQIKSQEQLAAE
 LAEYTAIALL EARRRKEDEVEEWQHRAKEAQDDL VKTKEELHLVMTAPPPPPPVYEPVSYHVQESLQ
 DEGAEPTGYSAE LSSGIRDRRNEEKRITEAEKNERVQRQLLTL SSEL SQARDENKRTHNDIIHNENMRQ
 GRDKYKTLRQIRQNTKQRIDEFEAL

TRTRPLEQKLISEEDLAANDILDYKDDDDKV

Chromatograms:

https://cdn.origene.com/chromatograms/mk6153_a11.zip

Restriction Sites: SgfI-MluI

Cloning Scheme:



ACCN: NM_001111077

ORF Size: 1758 bp

OTI Disclaimer: The molecular sequence of this clone aligns with the gene accession number as a point of reference only. However, individual transcript sequences of the same gene can differ through naturally occurring variations (e.g. polymorphisms), each with its own valid existence. This clone is substantially in agreement with the reference, but a complete review of all prevailing variants is recommended prior to use. [More info](#)

OTI Annotation: This clone was engineered to express the complete ORF with an expression tag. Expression varies depending on the nature of the gene.

Components: The ORF clone is ion-exchange column purified and shipped in a 2D barcoded Matrix tube containing 10ug of transfection-ready, dried plasmid DNA (reconstitute with 100 ul of water).

Reconstitution Method:

1. Centrifuge at 5,000xg for 5min.
2. Carefully open the tube and add 100ul of sterile water to dissolve the DNA.
3. Close the tube and incubate for 10 minutes at room temperature.
4. Briefly vortex the tube and then do a quick spin (less than 5000xg) to concentrate the liquid at the bottom.
5. Store the suspended plasmid at -20°C. The DNA is stable for at least one year from date of shipping when stored at -20°C.

RefSeq: [NM_001111077.2](#)

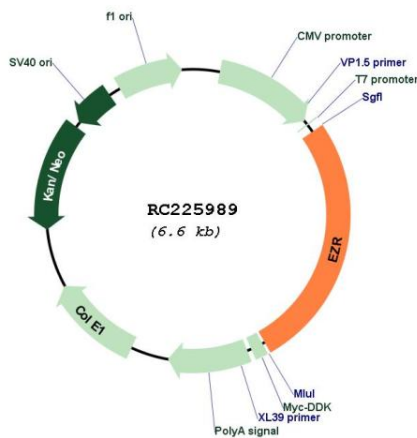
RefSeq Size: 3138 bp

RefSeq ORF: 1761 bp

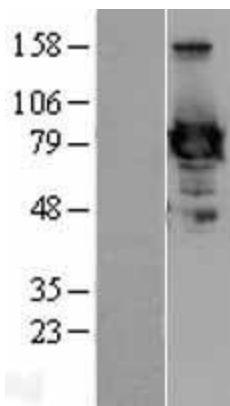
Locus ID: 7430

UniProt ID: [P15311](#)
Cytogenetics: 6q25.3
Protein Families: Druggable Genome
Protein Pathways: Leukocyte transendothelial migration, Pathogenic Escherichia coli infection, Regulation of actin cytoskeleton
MW: 69.4 kDa
Gene Summary: The cytoplasmic peripheral membrane protein encoded by this gene functions as a protein-tyrosine kinase substrate in microvilli. As a member of the ERM protein family, this protein serves as an intermediate between the plasma membrane and the actin cytoskeleton. This protein plays a key role in cell surface structure adhesion, migration and organization, and it has been implicated in various human cancers. A pseudogene located on chromosome 3 has been identified for this gene. Alternatively spliced variants have also been described for this gene. [provided by RefSeq, Jul 2008]

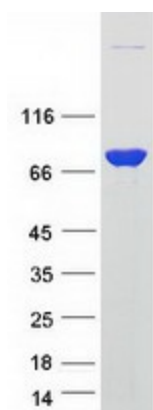
Product images:



Circular map for RC225989



Western blot validation of overexpression lysate (Cat# [LY426350]) using anti-DDK antibody (Cat# [TA50011-100]). Left: Cell lysates from untransfected HEK293T cells; Right: Cell lysates from HEK293T cells transfected with RC225989 using transfection reagent MegaTran 2.0 (Cat# [TT210002]).



Coomassie blue staining of purified EZR protein (Cat# [TP325989]). The protein was produced from HEK293T cells transfected with EZR cDNA clone (Cat# RC225989) using MegaTran 2.0 (Cat# [TT210002]).