

Product datasheet for **RC225810**

Chk1 (CHEK1) (NM_001114121) Human Tagged ORF Clone

Product data:

Product Type:	Expression Plasmids
Product Name:	Chk1 (CHEK1) (NM_001114121) Human Tagged ORF Clone
Tag:	Myc-DDK
Symbol:	Chk1
Synonyms:	CHK1
Mammalian Cell Selection:	Neomycin
Vector:	pCMV6-Entry (PS100001)
E. coli Selection:	Kanamycin (25 ug/mL)



[View online »](#)

ORF Nucleotide Sequence:

>RC225810 ORF sequence
 Red=Cloning site Blue=ORF Green=Tags(s)

TTTTGTAATACGACTCACTATAGGGCGGCCGGAATTCGTCGACTGGATCCGGTACCGAGGAGATCTGCC
 GCC**GCGATCGCC**

ATGGCAGTGCCCTTTGTGGAAGACTGGGACTTGGTGCAAACCCTGGGAGAAGGTGCCTATGGAGAAGTTC
 AACTTGCTGTGAATAGAGTAAGTGAAGAAGCAGTCGCAGTGAAGATTGTAGATATGAAGCGTGCCGTAGA
 CTGTCCAGAAAATATTAAGAAAGAGATCTGTATCAATAAAATGCTAAATCATGAAAATGTAGTAAAATTC
 TATGGTCACAGGAGAGAAGGCAATATCCAATATTTATTTCTGGAGTACTGTAGTGGAGGAGAGCTTTTTG
 ACAGAATAGAGCCAGACATAGGCATGCCTGAACCAGATGCTCAGAGATTCTCCATCAACTCATGGCAGG
 GGTGGTTTATCTGCATGGTATTGGAATAACTCACAGGGATATTAACCAGAAAATCTTCTGTTGGATGAA
 AGGGATAACCTCAAATCTCAGACTTTGGCTTGGCAACAGTATTCGGTATAATAATCGTGAGCGTTTGT
 TGAACAAGATGTGTGGTACTTTACCATATGTTGCTCCAGAACTTCTGAAGAGAAGAGAATTCATGCAGA
 ACCAGTTGATGTTTGGTCTGTGGAATAGTACTTACTGCAATGCTCGCTGGAGAATTGCCATGGGACCAA
 CCCAGTGACAGCTGTGAGGATATTCTGACTGGAAAGAAAAAAAACATACCTCAACCCCTGGAAAAAAA
 TCGATTCTGCTCCTCTAGCTCTGCTGCATAAAATCTTAGTTGAGAATCCATCAGCAAGAATTACCATTCC
 AGACATCAAAAAGATAGATGGTACAACAAACCCTCAAGAAAGGGGCAAAAAGGCCCGGAGTCACTTCA
 GGTGGTGTGCAGAGTCTCCAGTGGATTTTCTAAGCACATTCAATCCAATTTGGACTTCTCTCCAGTAA
 ACAGTGCTTCTAGTGAAGAAAATGTGAAGTACTCCAGTTCTCAGCCAGAACCCTGGCAGCGTCTTTCCTT
 ATGGGATACCAGCCCCTCATACATTGATAAATGGTACAAGGGATCAGCTTTTCCAGCCCACATGTCCT
 GATCATATGCTTTTGAATAGTCAGTTACTTGGCACCCAGGATCCTCACAGAACCCTGGCAGCGGTTGG
 TCAAAAAGAAATGACACGATTCTTTACCAAATGGATGCAGACAAAATCTTATCAATGCCTGAAAGAGACTG
 TGAGAAGTTGGGCTATCAATGGAAGAAAAGTTGTATGAATCAGGTTACTATATCAACAACCTGATAGGAGA
 AACAAATAAATCATTCTCAAAGTGAATTTGTTAGAAAATGGATGATAAAATATTGGTTGACTTCCGCTTT
 CTAAGGGTGTGGATTGGAGTTCAAGAGACACTTCTGAAGATTAAGGGGAAGCTGATTGATATTGTGAG
 CAGCCAGAAGGTTTGGCTTCTGCCACA

ACGCGTACGCGGCCGCTCGAGCAGAAACTCATCTCAGAAGAGGATCTGGCAGCAAATGATATCCTGGATT
 ACAAGGATGACGACGATAAGGTTTAA

Protein Sequence:

>RC225810 protein sequence
 Red=Cloning site Green=Tags(s)

MAVPFVEDWDLVQTLGEGAYGEVQLAVNRVTEEAVAVKIVDMKRAVDCPENIKKEICINKMLNHENVVKF
 YGHRREGNIQYLFLEYCSGGELFDRIEPDIGMPEPDAQRFHQLMAGVVYLHGIGITHRDIKPENLLLDE
 RDNLKISDFGLATVFRYNNRERLLNKMCGTLPYVAPELLKRREFHAEPVDVWSCGIVLTAMLGELPWDQ
 PSDSCQEYSDWKEKKTYPWKKIDSAPLALLHKILVENPSARITIPDIKKDRWYNKPLKKGAKRPRVTS
 GGVSESPSGFSKHIQSNLDFSPVNSASSEENVKYSSSQPEPRTGLSLWDTSPSYIDKLVQGISFSQPTCP
 DHMLLNSQLLGTGSSQNPWQRLVKRMTRFFTKLDADKSYQCLKETCEKLGQWKKSCMNQVTISTDDR
 NNKLIKFNLLMDDKILVDFRLSKGDGLEFKRHLKIKGKLIIDIVSSQKVWLPAT

TRTRPLEQKLISEEDLAANDILDYKDDDDKV

Chromatograms:

https://cdn.origene.com/chromatograms/mk6199_e01.zip

Restriction Sites:

SgfI-MluI

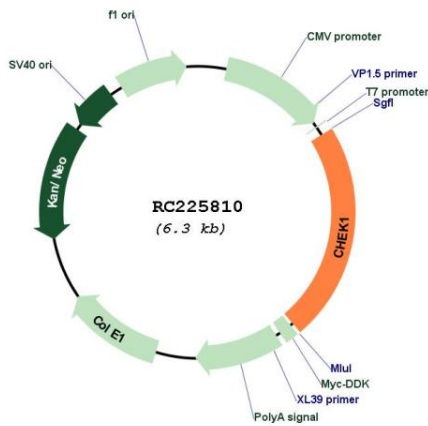
Protein Families: Druggable Genome, Protein Kinase, Stem cell - Pluripotency

Protein Pathways: Cell cycle, p53 signaling pathway

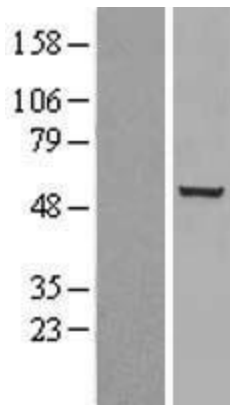
MW: 54.4 kDa

Gene Summary: The protein encoded by this gene belongs to the Ser/Thr protein kinase family. It is required for checkpoint mediated cell cycle arrest in response to DNA damage or the presence of unreplicated DNA. This protein acts to integrate signals from ATM and ATR, two cell cycle proteins involved in DNA damage responses, that also associate with chromatin in meiotic prophase I. Phosphorylation of CDC25A protein phosphatase by this protein is required for cells to delay cell cycle progression in response to double-strand DNA breaks. Several alternatively spliced transcript variants have been found for this gene. [provided by RefSeq, Oct 2011]

Product images:



Circular map for RC225810



Western blot validation of overexpression lysate (Cat# [LY426457]) using anti-DDK antibody (Cat# [TA50011-100]). Left: Cell lysates from untransfected HEK293T cells; Right: Cell lysates from HEK293T cells transfected with RC225810 using transfection reagent MegaTran 2.0 (Cat# [TT210002]).