

Product datasheet for RC225657

alpha 1 Antitrypsin (SERPINA1) (NM_001127702) Human Tagged ORF Clone

Product data:

Product Type:	Expression Plasmids
Product Name:	alpha 1 Antitrypsin (SERPINA1) (NM_001127702) Human Tagged ORF Clone
Tag:	Myc-DDK
Symbol:	alpha 1 Antitrypsin
Synonyms:	A1A; A1AT; AAT; alpha1AT; nNIF; PI; PI1; PRO2275
Mammalian Cell Selection:	Neomycin
Vector:	pCMV6-Entry (PS100001)
E. coli Selection:	Kanamycin (25 ug/mL)
ORF Nucleotide Sequence:	>RC225657 ORF sequence Red=Cloning site Blue=ORF Green=Tags(s)

TTTTGTAATACGACTCACTATAGGGCGGCCGGAATTCGTCGACTGGATCCGGTACCGAGGAGATCTGCC
GCC**CGATCGCC**

ATGCCGCTTCTGTCTCGTGGGGCATCCTCCTGCTGGCAGGCCTGTGCTGCCTGGTCCCTGTCTCCCTGG
CTGAGGATCCCCAGGGAGATGCTGCCAGAAAGACAGATACATCCCACCATGATCAGGATCACCCAACCTT
CAACAAGATCACCCCAACCTGGCTGAGTTCGCCTTCAGCCTATACCGCCAGCTGGCACACCAGTCCAAC
AGCACCAATATCTTCTTCTCCCACTGAGCATCGCTACAGCCTTTGCAATGCTCTCCCTGGGACCAAGG
CTGACACTCACGATGAAATCCTGGAGGGCCTGAATTTCAACCTCACGGAGATTCCGGAGGCTCAGATCCA
TGAAGGCTTCCAGGAACTCCTCCGTACCCTCAACCAGCCAGACAGCCAGCTCCAGCTGACCACCGCAAT
GGCTTGTCTCCTCAGCGAGGGCCTGAAGCTAGTGGATAAGTTTTGGAGGATGTTAAAAAGTTGTACCACT
CAGAAGCCTTCACTGTCAACTTCGGGGACACCGAAGAGGCCAAGAAACAGATCAACGATTACGTGGAGAA
GGTACTCAAGGGAAAAATTGTGGATTTGGTCAAGGAGCTTGACAGAGACACAGTTTTGTCTGGTGAAT
TACATCTTCTTTAAAGGCAATGGGAGAGACCTTTGAAGTCAAGGACACCGAGGAAGAGGACTTCCACG
TGGACCAGGTGACCACCGTGAAGGTGCCTATGATGAAGCGTTTAGCATGTTTAAACATCCAGCACTGTA
GAAGCTGTCCAGCTGGGTGCTGCTGATGAAATACCTGGCAATGCCACCGCCATCTTCTCTGCCTGAT
GAGGGGAAACTACAGCACCTGGAAAATGAACTCACCCACGATATCATACCAAGTTCTGGAAAATGAAG
ACAGAAGGTCTGCCAGTTACATTTACCCAAACTGTCCATTACTGGAACCTATGATCTGAAGAGCGTCT
GGGTCAACTGGGCATCACTAAGGTCTTACGCAATGGGGCTGACCTCTCCGGGGTACAGAGGAGGCCACCC
CTGAAGCTCTCCAAGCCGTGCATAAGGCTGTGCTGACCATCGACGAGAAAGGGACTGAAGCTGCTGGG
CCATGTTTTAGAGGCCATACCCATGTCTATCCCCCGAGGTCAAGTTCAACAAACCTTTGTCTTCTT
AATGATTGACCAAAATACCAAGTCTCCCCTCTTCATGGGAAAAGTGGTGAATCCCACCAAAAA

ACGCGTACGCGGCCGCTCGAGCAGAAACTCATCTCAGAAGAGGATCTGGCAGCAATGATATCCTGGATT
ACAAGGATGACGACGATAAGGTTTAA



[View online >](#)

Reconstitution Method:

1. Centrifuge at 5,000xg for 5min.
2. Carefully open the tube and add 100ul of sterile water to dissolve the DNA.
3. Close the tube and incubate for 10 minutes at room temperature.
4. Briefly vortex the tube and then do a quick spin (less than 5000xg) to concentrate the liquid at the bottom.
5. Store the suspended plasmid at -20°C. The DNA is stable for at least one year from date of shipping when stored at -20°C.

RefSeq: [NM_001127702.1](#), [NP_001121174.1](#)

RefSeq Size: 3340 bp

RefSeq ORF: 1257 bp

Locus ID: 5265

UniProt ID: [P01009](#)

Cytogenetics: 14q32.13

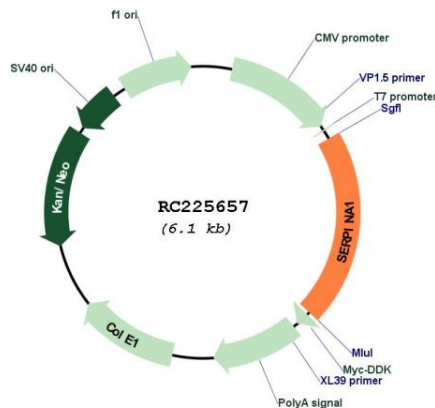
Protein Families: Druggable Genome, ES Cell Differentiation/IPS, Secreted Protein

Protein Pathways: Complement and coagulation cascades

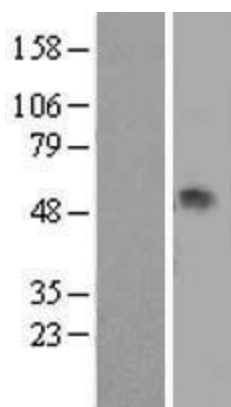
MW: 46.7 kDa

Gene Summary: The protein encoded by this gene is a serine protease inhibitor belonging to the serpin superfamily whose targets include elastase, plasmin, thrombin, trypsin, chymotrypsin, and plasminogen activator. This protein is produced in the liver, the bone marrow, by lymphocytic and monocytic cells in lymphoid tissue, and by the Paneth cells of the gut. Defects in this gene are associated with chronic obstructive pulmonary disease, emphysema, and chronic liver disease. Several transcript variants encoding the same protein have been found for this gene. [provided by RefSeq, Aug 2020]

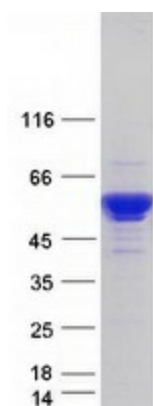
Product images:



Circular map for RC225657



Western blot validation of overexpression lysate (Cat# [LY426858]) using anti-DDK antibody (Cat# [TA50011-100]). Left: Cell lysates from untransfected HEK293T cells; Right: Cell lysates from HEK293T cells transfected with [RC225668] using transfection reagent MegaTran 2.0 (Cat# [TT210002]).



Coomassie blue staining of purified SERPINA1 protein (Cat# [TP325657]). The protein was produced from HEK293T cells transfected with SERPINA1 cDNA clone (Cat# RC225657) using MegaTran 2.0 (Cat# [TT210002]).