

## Product datasheet for **RC225623**

### INPP1 (NM\_001128928) Human Tagged ORF Clone

#### Product data:

Product Type:	Expression Plasmids
Product Name:	INPP1 (NM_001128928) Human Tagged ORF Clone
Tag:	Myc-DDK
Symbol:	INPP1
Mammalian Cell Selection:	Neomycin
Vector:	pCMV6-Entry (PS100001)
E. coli Selection:	Kanamycin (25 ug/mL)
ORF Nucleotide Sequence:	>RC225623 ORF sequence Red=Cloning site Blue=ORF Green=Tags(s)

TTTTGTAATACGACTCACTATAGGGCGGCCGGAATTCGTCGACTGGATCCGGTACCGAGGAGATCTGCC  
GCC**CGATCGCC**

ATGTCAGATATCCTCCGGGAGCTGCTCTGTGTCTCTGAGAAGGCTGCTAACATTGCCCGGGCGTGCAGAC  
AGCAGGAAGCCCTCTCCAGCTGCTGATCGAAGAAAAGAAAGAGGGAGAAAAGAACAAGAAGTTGCAGT  
TGACTTCAAGACGCTGGCTGATGTAAGTACAGGAAGTTATAAAACAGAATATGGAGAACAAGTTTCCA  
GGCTTGGAAAAAATATTTTTGGAGAAGAATCCAATGAGTTTACTAATGACTGGGGGAAAAGATTACCT  
TGAGTTGTGTTCAACAGAGGAGGAAACAGCAGAGCTTCTTAGCAAAGTCCCAATGGTAAACAAGGTGGC  
ATCTGAAGCATTAGCCAGGGTTGTTTCATCAGGATGTTGCCTTTACTGACCAACTCTGGATTCCACAGAG  
ATCAATGTTCCACAGGACATTTTGGGAATTTGGGTGGACCCCATAGATTCAACTTATCAGTATATAAAAG  
GTTCTGCTGACATTAATCCAACCAGGGAATCTCCCTGTGGACTTCAGTGTGCACCATTTAATTGG  
TGTCTATGACATACAGACAGGGTTCCCTGATGGGAGTCATCAATCAACCTTTTGTGTCACGAGATCCA  
AACACCTCAGGTGAAAGGACAGTGTCTATTGGGGCTTTCTTACATGGGGACCAACATGCATTCACTAC  
AGCTCACCATCTCTAGAAGAAACGGCAGTGAACACACACTGAAACACCGGCTCTGAGGCAGCATTCTC  
CCCCAGTTTTTCAGCCGTAATTAGTACAAGTAAAAGGAGACTATCAAAGCTGCATTGTCACGTGTGTGT  
GGAGATCGCATATTTGGGCAGCTGGGGCTGGTTATAAGAGCCTATGTGTTGTCCAAGGCCTCGTTGACA  
TTTACATCTTTTCAAGATACACATTCAAATGGGACTCTGTGCTGCTCATGCCATACTGAGGGCCAT  
GGTGGGGGAATAGTAGACTTGAAGAATGCTTAGAAAGAAATCCAGAAACAGGGCTTGATTTGCCACAG  
TTGGTGTACCACGTGAAATGAGGGTGTGCTGGGGTGGATCGGTGGCCAACAAGGGAGGACTCATTG  
CATACAGATCCAGGAAGCGGCTGGAGACATTCCTGAGCCTCCTGGTCCAAAACCTGGCACCTGCAGAGAC  
GCATACC

**ACGCGT**ACGCGGGCCGCTCGAGCAGAAACTCATCTCAGAAGAGGATCTGGCAGCAATGATATCCTGGATT  
ACAAGGATGACGACGATAAGGTTTAA



[View online »](#)

**Protein Sequence:** >RC225623 protein sequence  
Red=Cloning site Green=Tags(s)

```
MSDILRELLCVSEKAANIARACRQQEALFQLLIEEKKEGEKNKKFAVDFKTLADVLVQVEVIKQNMENKFP
GLEKNIFGEESNEFTNDWGEKITLRLCSTEEETAELL SKVLNGNKVASEALARVVHQDVAFDPTLDSTE
INVPQDILGIWVDPIDSTYQYIKGSADIKSNQGI FPCGLQCVTILIGVYDIQTGVPLMGVINQPFVSRDP
NTRLRWKGCYWGLSYMGTMHSLQLTISRNRGSEHTHTGNTGSEAAFSPSFSAVISTSEKETIKAALSRVC
GDRIFGAAGAGYKSLCVVQGLVDIYIFSED TTFKWDSCAAHAILRAMGGGIVDLKECLERNPETGLDLPQ
LVYHVENEGAAGVDRWANKGGLIAYRSRKRLETFLLSLLVQNLAPAETHT
```

TRTRPLEQKLISEEDLAANDILDYKDDDDKV

**Chromatograms:** [https://cdn.origene.com/chromatograms/mk6272\\_b09.zip](https://cdn.origene.com/chromatograms/mk6272_b09.zip)

**Restriction Sites:** SgfI-MluI

**Cloning Scheme:**

Cloning sites used for ORF Shuttling:



\* The last codon before the Stop codon of the ORF

**ACCN:** NM\_001128928

**ORF Size:** 1197 bp

**OTI Disclaimer:** The molecular sequence of this clone aligns with the gene accession number as a point of reference only. However, individual transcript sequences of the same gene can differ through naturally occurring variations (e.g. polymorphisms), each with its own valid existence. This clone is substantially in agreement with the reference, but a complete review of all prevailing variants is recommended prior to use. [More info](#)

**OTI Annotation:** This clone was engineered to express the complete ORF with an expression tag. Expression varies depending on the nature of the gene.

**Components:** The ORF clone is ion-exchange column purified and shipped in a 2D barcoded Matrix tube containing 10ug of transfection-ready, dried plasmid DNA (reconstitute with 100 ul of water).

**Reconstitution Method:**

1. Centrifuge at 5,000xg for 5min.
2. Carefully open the tube and add 100ul of sterile water to dissolve the DNA.
3. Close the tube and incubate for 10 minutes at room temperature.
4. Briefly vortex the tube and then do a quick spin (less than 5000xg) to concentrate the liquid at the bottom.
5. Store the suspended plasmid at -20°C. The DNA is stable for at least one year from date of shipping when stored at -20°C.

**RefSeq:** [NM\\_001128928.2](#)

**RefSeq Size:** 2179 bp

**RefSeq ORF:** 1200 bp

**Locus ID:** 3628

**UniProt ID:** [P49441](#)

**Cytogenetics:** 2q32.2

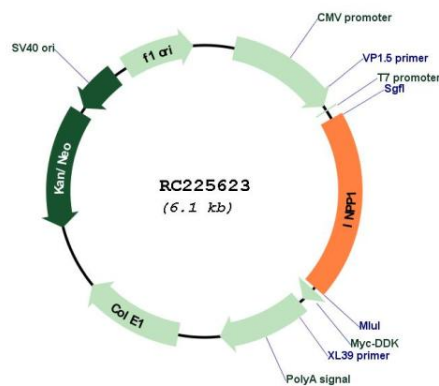
**Protein Families:** Druggable Genome

**Protein Pathways:** Inositol phosphate metabolism, Metabolic pathways, Phosphatidylinositol signaling system

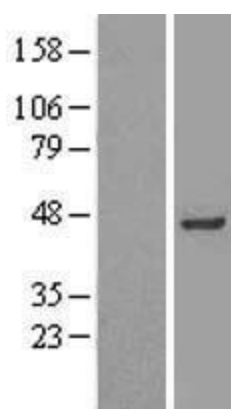
**MW:** 44 kDa

**Gene Summary:** This gene encodes the enzyme inositol polyphosphate-1-phosphatase, one of the enzymes involved in phosphatidylinositol signaling pathways. This enzyme removes the phosphate group at position 1 of the inositol ring from the polyphosphates inositol 1,4-bisphosphate and inositol 1,3,4-trisphosphosphate. [provided by RefSeq, Jul 2008]

### Product images:



Circular map for RC225623



Western blot validation of overexpression lysate (Cat# [LY427029]) using anti-DDK antibody (Cat# [TA50011-100]). Left: Cell lysates from untransfected HEK293T cells; Right: Cell lysates from HEK293T cells transfected with RC225623 using transfection reagent MegaTran 2.0 (Cat# [TT210002]).