

Product datasheet for RC225614

FOXP3 (NM_001114377) Human Tagged ORF Clone

Product data:

Product Type: Expression Plasmids
Product Name: FOXP3 (NM_001114377) Human Tagged ORF Clone
Tag: Myc-DDK
Symbol: FOXP3
Synonyms: AIID; DIETER; IPEX; JM2; PIDX; XPID
Mammalian Cell Selection: Neomycin
Vector: pCMV6-Entry (PS100001)
E. coli Selection: Kanamycin (25 ug/mL)
ORF Nucleotide Sequence: >RC225614 representing NM_001114377
 Red=Cloning site Blue=ORF Green=Tags(s)

TTTTGTAATACGACTCACTATAGGGCGGCCGGAATTCGTCGACTGGATCCGGTACCGAGGAGATCTGCC
 GCC**CGATCGCC**

ATGCCCAACCCAGGCCTGGCAAGCCCTCGGCCCTTCTTGGCCCTGGCCATCCCCAGGAGCCTCGC
 CCAGCTGGAGGGCTGCACCCAAAGCCTCAGACCTGCTGGGGGCCGGGGCCAGGGGAACCTCCAGGG
 CCGAGATCTTCGAGGGGGGCCATGCCTCTTCTTCTTGAACCCATGCCACCATCGCAGCTGCAG
 CTCTCAACGGTGGATGCCACGCCCGGACCCCTGTGCTGCAGGTGCACCCCTGGAGAGCCAGCCATGA
 TCAGCCTCACACCACCCACCACCACCCTGGGGTCTTCTCCCTCAAGGCCGGCCTGGCCTCCACCTGG
 GATCAACGTGGCCAGCCTGGAATGGGTGTCCAGGGAGCCGGCACTGCTCTGCACCTCCCAAATCCCACT
 GCACCCAGGAAGGACAGCACCTTTTCGGCTGTGCCCCAGAGCTCCTACCCACTGTGGCAATGGTGTCT
 GCAAGTGGCCCGGATGTGAGAAGGTCTTGAAGAGCCAGAGGACTTCTCAAGCACTGCCAGGCGGACCA
 TCTTCTGGATGAGAAGGGCAGGGCACAATGTCTCCTCCAGAGAGAGATGGTACAGTCTCTGGAGCAGCAG
 CTGGTGTGGAGAAGGAGAAGCTGAGTGCCATGCAGGCCACCTGGTGGGAAAATGGCACTGACCAAGG
 CTTTCATCTGTGGCATCATCCGACAAGGGCTCCTGCTGCATCGTAGCTGCTGGCAGCAAGGCCCTGTCGT
 CCCAGCCTGGTCTGGCCCCGGGAGGCCCTGACAGCCTGTTTGTGTCCGGAGGCACCTGTGGGGTAGC
 CATGGAAACAGCACATTCCAGAGTTCTCCACAACATGGACTACTTCAAGTTCCACAACATGCGACCCC
 CTTTCACCTACGCCACGCTCATCCGCTGGGCCATCCTGGAGGCTCCAGAGAAGCAGCGGACACTCAATGA
 GATCTACCACTGGTTACACGCATGTTTGCCTTTCAGAAACCATCCTGCCACCTGGAAGAAGCCATC
 CGCCACAACCTGAGTCTGCAACAAGTCTTTGTGCGGGTGGAGAGCGAGAAGGGGGCTGTGTGGACCTGG
 ATGAGCTGGAGTCCGCAAGAAACGGAGCCAGAGGCCAGAGGCTTCCAACCTACACCTGGCCCC

ACGCGTACGCGGCCGCTCGAGCAGAACTCATCTCAGAAGAGGATCTGGCAGCAATGATATCCTGGATT
 ACAAGGATGACGACGATAAGGTTTAA



[View online >](#)

Protein Sequence: >RC225614 representing NM_001114377
 Red=Cloning site Green=Tags(s)

MPNPRPGKPSAPSLALGPSPGASPSWRAAPKASDLLGARGGGTFQGRDLRGGAHASSSSLNPMPPSQLO
 LSTVDAHARTPVLQVHPLESPAMISLTPPTTATGVFSLKARPLPPGINVASLEWVSREPLLCTFPNPS
 APRKSTLSAVPQSSYPLLANGVCKWPGCEKVFEEPEDFLKHCQADHLLDEKGRAQCLLQREMVQSLEQQ
 LVLEKEKLSAMQAHLAGKMALTKASSVSSDKGSCCIVAAGSQGPVVPAWSGPREAPDSLFAVRRHLWGS
 HGNSTFPEFLHNMDYFKFHNMRPPFTYATLIRWAILLEAPEKQRTLNEIYHWFTRMFAFFRNHPATWKNAI
 RHNLSLHKCFVRVESEKGAVWTVDELEFRKKRSQRPSRCSNPPTGP

TRTRPLEQKLISEEDLAANDILDYKDDDDKV

Restriction Sites:

SgfI-MluI

Cloning Scheme:

Cloning sites used for ORF Shuttling:



* The last codon before the Stop codon of the ORF

ACCN: NM_001114377

ORF Size: 1188 bp

OTI Disclaimer: The molecular sequence of this clone aligns with the gene accession number as a point of reference only. However, individual transcript sequences of the same gene can differ through naturally occurring variations (e.g. polymorphisms), each with its own valid existence. This clone is substantially in agreement with the reference, but a complete review of all prevailing variants is recommended prior to use. [More info](#)

OTI Annotation: This clone was engineered to express the complete ORF with an expression tag. Expression varies depending on the nature of the gene.

Components: The ORF clone is ion-exchange column purified and shipped in a 2D barcoded Matrix tube containing 10ug of transfection-ready, dried plasmid DNA (reconstitute with 100 ul of water).

Reconstitution Method:

1. Centrifuge at 5,000xg for 5min.
2. Carefully open the tube and add 100ul of sterile water to dissolve the DNA.
3. Close the tube and incubate for 10 minutes at room temperature.
4. Briefly vortex the tube and then do a quick spin (less than 5000xg) to concentrate the liquid at the bottom.
5. Store the suspended plasmid at -20°C. The DNA is stable for at least one year from date of shipping when stored at -20°C.

RefSeq: [NM_001114377.2](#)

RefSeq ORF: 1191 bp

Locus ID: 50943

UniProt ID: [Q9BZS1](#)

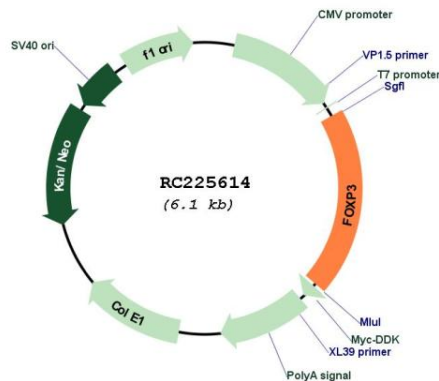
Cytogenetics: Xp11.23

Protein Families: Transcription Factors

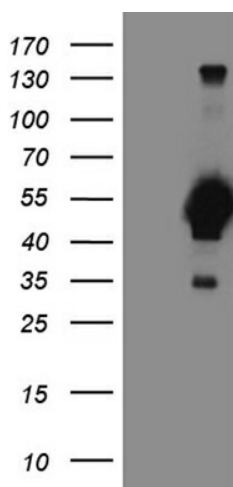
MW: 43.2 kDa

Gene Summary: The protein encoded by this gene is a member of the forkhead/winged-helix family of transcriptional regulators. Defects in this gene are the cause of immunodeficiency polyendocrinopathy, enteropathy, X-linked syndrome (IPEX), also known as X-linked autoimmunity-immunodeficiency syndrome. Alternatively spliced transcript variants encoding different isoforms have been identified. [provided by RefSeq, Jul 2008]

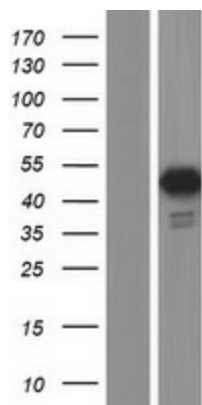
Product images:



Circular map for RC225614



HEK293T cells were transfected with the pCMV6-ENTRY control (Cat# [PS100001], Left lane) or pCMV6-ENTRY FOXP3 (Cat# RC225614, Right lane) cDNA for 48 hrs and lysed. Equivalent amounts of cell lysates (5 ug per lane) were separated by SDS-PAGE and immunoblotted with anti-FOXP3 (Cat# [TA810544])(1:2000). Positive lysates [LY426481] (100ug) and [LC426481] (20ug) can be purchased separately from OriGene.



Western blot validation of overexpression lysate (Cat# [LY426481]) using anti-DDK antibody (Cat# [TA50011-100]). Left: Cell lysates from untransfected HEK293T cells; Right: Cell lysates from HEK293T cells transfected with RC225614 using transfection reagent MegaTran 2.0 (Cat# [TT210002]).