

Product datasheet for RC225519

Haptoglobin (HP) (NM_001126102) Human Tagged ORF Clone

Product data:

Product Type:	Expression Plasmids
Product Name:	Haptoglobin (HP) (NM_001126102) Human Tagged ORF Clone
Tag:	Myc-DDK
Symbol:	Haptoglobin
Synonyms:	BP; HP2ALPHA2; HPA1S
Mammalian Cell Selection:	Neomycin
Vector:	pCMV6-Entry (PS100001)
E. coli Selection:	Kanamycin (25 ug/mL)
ORF Nucleotide Sequence:	>RC225519 representing NM_001126102 Red=Cloning site Blue=ORF Green=Tags(s)

TTTTGTAATACGACTCACTATAGGGCGGCCGGAATTCGTCGACTGGATCCGGTACCGAGGAGATCTGCC
GCC**CGATCGCC**

ATGAGTGCCTGGGAGCTGTCATTGCCCTCCTGCTCTGGGGACAGCTTTTTGCAGTGGACTCAGGCAATG
ATGTCACGGATATCGCAGATGACGGCTGCCGAAGCCCCGAGATTGCACATGGCTATGTGGAGCACTC
GGTTCGCTACCACTGTAAGAATACTACAACTGCGCACAGAAGGAGATGGAGTGTACACCTAAACAAT
GAGAAGCAGTGGATAAAATAAGGCTGTTGGAGATAAACTCCTGAATGTGAAGCAGTATGTGGGAAGCCCA
AGAATCCGGCAAACCCAGTGCAGCGGATCCTGGGTGGACACCTGGATGCCAAAGGCAGCTTCCCTGGCA
GGCTAAGATGGTTTCCCACCATAATCTCACCACAGGTGCCACGCTGATCAATGAACAATGGCTGCTGACC
ACGGCTAAAAATCTTCTCCTGAACCATTCAGAAAATGCAACAGCGAAAAGACATTGCCCTACTTTAACAC
TCTATGTGGGGAAAAAGCAGCTTGTAGAGATTGAGAAGGTTGTTCTACACCTAACTACTCCCAGGTAGA
TATTGGGCTCATCAAACCTCAAACAGAAGGTGTCTGTTAATGAGAGAGTGTGCCATCTGCCTACCTTCA
AAGGATTATGCAGAAGTAGGGCGTGTGGTTATGTTTCTGGCTGGGGCGAAATGCCAATTTTAAATTTA
CTGACCATCTGAAGTATGTCATGCTGCCTGTGGCTGACCAAGACCAATGCATAAGGCATTATGAAGGCAG
CACAGTCCCCGAAAAGAAGACACCGAAGAGCCCTGTAGGGGTGCAGCCATACTGAATGAACACACCTTC
TGTGCTGGCATGTCTAAGTACCAAGAAGACACCTGCTATGGCGATGCGGGCAGTGCCTTTGCCGTTACAG
ACCTGGAGGAGGACACCTGGTATGCGACTGGGATCTTAAGCTTTGATAAAGAGCTGTGCTGTGGCTGAGTA
TGGTGTGTATGTGAAGGTGACTTCCATCCAGGACTGGGTTTCAGAAGACCATAGCTGAGAAC

ACGCGTACGCGGCCGCTCGAGCAGAAACTCATCTCAGAAGAGGATCTGGCAGCAATGATATCCTGGATT
ACAAGGATGACGACGATAAGGTTTAA



[View online »](#)

Reconstitution Method:

1. Centrifuge at 5,000xg for 5min.
2. Carefully open the tube and add 100ul of sterile water to dissolve the DNA.
3. Close the tube and incubate for 10 minutes at room temperature.
4. Briefly vortex the tube and then do a quick spin (less than 5000xg) to concentrate the liquid at the bottom.
5. Store the suspended plasmid at -20°C. The DNA is stable for at least one year from date of shipping when stored at -20°C.

RefSeq: [NM_001126102.2](#)

RefSeq ORF: 1044 bp

Locus ID: 3240

UniProt ID: [P00738](#)

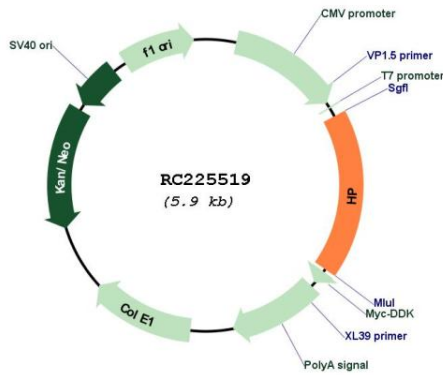
Cytogenetics: 16q22.2

Protein Families: Druggable Genome, Protease, Secreted Protein, Transmembrane

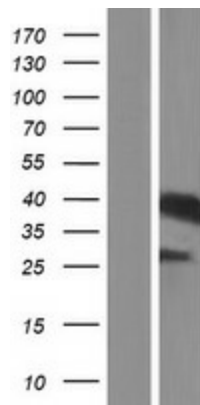
MW: 38.45 kDa

Gene Summary: This gene encodes a preproprotein, which is processed to yield both alpha and beta chains, which subsequently combine as a tetramer to produce haptoglobin. Haptoglobin functions to bind free plasma hemoglobin, which allows degradative enzymes to gain access to the hemoglobin, while at the same time preventing loss of iron through the kidneys and protecting the kidneys from damage by hemoglobin. Mutations in this gene and/or its regulatory regions cause ahaptoglobinemia or hypohaptoglobinemia. This gene has also been linked to diabetic nephropathy, the incidence of coronary artery disease in type 1 diabetes, Crohn's disease, inflammatory disease behavior, primary sclerosing cholangitis, susceptibility to idiopathic Parkinson's disease, and a reduced incidence of Plasmodium falciparum malaria. The protein encoded also exhibits antimicrobial activity against bacteria. A similar duplicated gene is located next to this gene on chromosome 16. Multiple transcript variants encoding different isoforms have been found for this gene. [provided by RefSeq, Oct 2014]

Product images:



Circular map for RC225519



Western blot validation of overexpression lysate (Cat# [LY426644]) using anti-DDK antibody (Cat# [TA50011-100]). Left: Cell lysates from untransfected HEK293T cells; Right: Cell lysates from HEK293T cells transfected with RC225519 using transfection reagent MegaTran 2.0 (Cat# [TT210002]).