

Product datasheet for RC225455

Pit1 (POU1F1) (NM_001122757) Human Tagged ORF Clone

Product data:

Product Type:	Expression Plasmids
Product Name:	Pit1 (POU1F1) (NM_001122757) Human Tagged ORF Clone
Tag:	Myc-DDK
Symbol:	Pit1
Synonyms:	CPHD1; GHF-1; Pit-1; PIT1; POU1F1a
Mammalian Cell Selection:	Neomycin
Vector:	pCMV6-Entry (PS100001)
E. coli Selection:	Kanamycin (25 ug/mL)
ORF Nucleotide Sequence:	>RC225455 representing NM_001122757 Red=Cloning site Blue=ORF Green=Tags(s)

TTTTGTAATACGACTCACTATAGGGCGGCCGGAATTCGTCGACTGGATCCGGTACCGAGGAGATCTGCC
GCC**CGCATCGCC**

ATGAGTTGCCAAGCTTTTACTTCGGCTGATACCTTTATACCTCTGAATTCTGACGCCTCTGCAACTCTGC
CTCTGATAATGCATCACAGTGCTGCCGAGTGTCTACCAGTCTCCAACCATGCCACCAATGTGATGTCTAC
AGTCCCATCTATTTTGTCTTTGATCCAACTCCTAAATGTTTGTGCACACATTTCTGGTGACAACGTTG
GAAAACACAGCAACAGGACTTCATTATTCTGTTCTTCTGTCTATTATGAAAACAGCCATCAACCTATG
GAGTGATGGCAGGTAGTTTAACCCCTTGTCTTTATAAATTCCTGACCACACCTTGAGTCATGGATTTC
TCCTATACACCAGCCTTCTGGCAGAGGACCCACAGCTGCTGATTTCAAGCAGGAACTCAGGCGGAAA
AGTAAATTGGTGGAAGAGCCAATAGACATGGATTCTCCAGAAATCAGAGAACTGAAAAGTTTGCCAATG
AATTTAAAGTGAGACGAATTAATTAGGATACACCCAGACAAATGTTGGGGAGGCCCTGGCAGCTGTGCA
TGGCTCTGAATTCAGTCAACAACAATCTGCCGATTTGAAAATCTGCAGCTCAGCTTTAAAAATGCATGC
AAACTGAAAGCAATATTATCCAATGGCTGGAGGAAGCTGAGCAAGTAGGAGCTTTGTACAATGAAAAG
TGGGAGCAATGAAAGGAAAAGAAAACGAAGAACAATAAGCATTGCTGCTAAAGATGCTCTGGAGAG
ACACTTTGGAGAACAGAATAAACCTTCTTCTCAAGAGATCATGAGGATGGCTGAAGAAGTGAATCTGGAG
AAAGAAGTAGTAAGAGTTTGGTTTTGCAACCGGAGGCAGAGAGAAAACGGGTGAAAACAAGTCTGAATC
AGAGTTTATTTTCTATTCTAAGGAACATCTTGAGTGCAGA

ACGCGTACGCGGCCGCTCGAGCAGAAACTCATCTCAGAAGAGGATCTGGCAGCAATGATATCCTGGATT
ACAAGGATGACGACGATAAGGTTTAA



[View online »](#)

Protein Sequence: >RC225455 representing NM_001122757
Red=Cloning site Green=Tags(s)

MSCQAFTSADTFIPLNSDASATLPLIMHHSAAECLPVSNHATNMSTVPSILSLIQTPKCLCTHFSVTTL
 GNTATGLHYSVPSCHYGNQPSYGVSMAGSLTPCLYKFPDHTLSHGFPPIHQPLLAEDPTAADFQELRRK
 SKLVEEPIIDMSPEIRELEKFFANEFKVRRIKLGTYQTNVGEALAAVHGSEFSQTTICRFENLQLSFKNAC
 KLKAILSKWLEEAQVGVGALYNEKVGANERKRRTTISIAAKDALERHFGEQNKPSQEIIMRMAEELNLE
 KEVVRVWFCNRRQREKRVKTSLNQSLFSISKEHLECR

TRTRPLEQKLISEEDLAANDILDYKDDDDKV

Chromatograms: https://cdn.origene.com/chromatograms/mk8033_d05.zip

Restriction Sites: SgfI-MluI

Cloning Scheme:



ACCN: NM_001122757

ORF Size: 951 bp

OTI Disclaimer: The molecular sequence of this clone aligns with the gene accession number as a point of reference only. However, individual transcript sequences of the same gene can differ through naturally occurring variations (e.g. polymorphisms), each with its own valid existence. This clone is substantially in agreement with the reference, but a complete review of all prevailing variants is recommended prior to use. [More info](#)

OTI Annotation: This clone was engineered to express the complete ORF with an expression tag. Expression varies depending on the nature of the gene.

Components: The ORF clone is ion-exchange column purified and shipped in a 2D barcoded Matrix tube containing 10ug of transfection-ready, dried plasmid DNA (reconstitute with 100 ul of water).

Reconstitution Method:

1. Centrifuge at 5,000xg for 5min.
2. Carefully open the tube and add 100ul of sterile water to dissolve the DNA.
3. Close the tube and incubate for 10 minutes at room temperature.
4. Briefly vortex the tube and then do a quick spin (less than 5000xg) to concentrate the liquid at the bottom.
5. Store the suspended plasmid at -20°C. The DNA is stable for at least one year from date of shipping when stored at -20°C.

RefSeq: [NM_001122757.3](#)

RefSeq ORF: 954 bp

Locus ID: 5449

UniProt ID: [P28069](#)

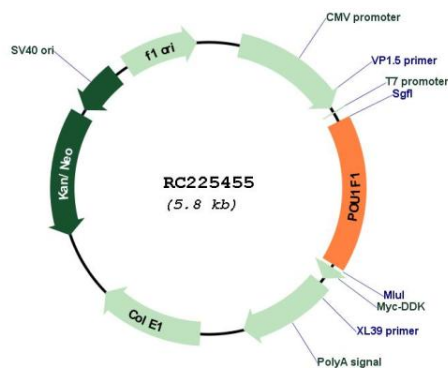
Cytogenetics: 3p11.2

Protein Families: Druggable Genome, Transcription Factors

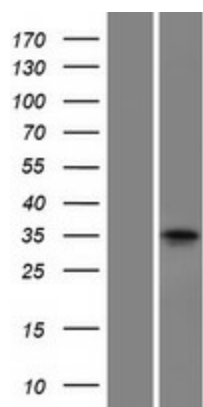
MW: 35.5 kDa

Gene Summary: This gene encodes a member of the POU family of transcription factors that regulate mammalian development. The protein regulates expression of several genes involved in pituitary development and hormone expression. Mutations in this genes result in combined pituitary hormone deficiency. Multiple transcript variants encoding different isoforms have been found for this gene. [provided by RefSeq, Jul 2008]

Product images:



Circular map for RC225455



Western blot validation of overexpression lysate (Cat# [LY426557]) using anti-DDK antibody (Cat# [TA50011-100]). Left: Cell lysates from untransfected HEK293T cells; Right: Cell lysates from HEK293T cells transfected with RC225455 using transfection reagent MegaTran 2.0 (Cat# [TT210002]).