

## Product datasheet for **RC225386**

### EEF1D (NM\_001130055) Human Tagged ORF Clone

#### Product data:

**Product Type:** Expression Plasmids  
**Product Name:** EEF1D (NM\_001130055) Human Tagged ORF Clone  
**Tag:** Myc-DDK  
**Symbol:** EEF1D  
**Synonyms:** EF-1D; EF1D; FP1047  
**Mammalian Cell Selection:** Neomycin  
**Vector:** pCMV6-Entry (PS100001)  
**E. coli Selection:** Kanamycin (25 ug/mL)  
**ORF Nucleotide Sequence:** >RC225386 representing NM\_001130055  
**Red=Cloning site Blue=ORF Green=Tags(s)**

TTTTGTAATACGACTCACTATAGGGCGCCGGGAATTCGTCGACTGGATCCGGTACCGAGGAGATCTGCC  
GCC**CGGATCGCC**

ATGGCTACAACTTCTAGCACATGAGAAGATCTGGTTCGACAAGTTCAAATATGACGACGCAGAAAAGGA  
GATTCTACGAGCAGATGAACGGCCTGTGGCAGGTGCCTCCCGCCAGGAGAACGGCGCCAGCGTGATCCT  
CCGTGACATTGCGAGAGCCAGAGAGAACATCCAGAAATCCCTGGCTGGAAGCTCAGGCCCGGGCCTCC  
AGCGGCACCAGCGGAGACCACGGTGAGCTCGTCGTCGGATTGCCAGTCTGGAAGTGAGAACAGAGTC  
TGGCTGGCGTGGTACAGGAGCTGCAGCAGGCCATCTCCAAGCTGGAGGCCCGGCTGAACGTGCTGGAGAA  
GAGCTCGCCTGGCCACCGGGCCACGGCCACAGACCCAGCACGTATCTCCCATGCGCCAAGTGGAGCCC  
CCAGCCAAGAAGCCAGCCACACCAGCAGAGGATGACGAGGATGATGACATTGACCTGTTTGGCAGTGACA  
ATGAGGAGGAGGACAAGGAGGGCCACAGCTGCGGGAGGAGCGGTACGGCAGTACGGGAGAAGAAGGC  
CAAGAAGCCTGCACTGGTGGCCAAGTCTCCATCCTGCTGGATGTCAAGCCTTGGGATGATGAGACGGAC  
ATGGCCCAGCTGGAGGCCTGTGTGCGCTATCCAGCTGGACGGGCTGGTCTGGGGGCTTCAAGCTGG  
TGCCCGTGGGCTACGGTATCCGGAAGCTACAGATTCAGTGTGTGGTGGAGGACGACAAGTGGGGACAGA  
CTTGCTGGAGGAGGAGATCACCAAGTTTGAGGAGCACGTGCAGAGTGTGCATATCGCAGCTTTCAACAAG  
ATC

**ACGCGT**ACGCGGGCCGCTCGAGCAGAAACTCATCTCAGAAGAGGATCTGGCAGCAAATGATATCCTGGATT  
ACAAGGATGACGACGATAAGGTTTAA



[View online »](#)

**Protein Sequence:** >RC225386 representing NM\_001130055  
Red=Cloning site Green=Tags(s)

MATNFLAHEKIWFDFKFKYDDAERRFYEQMNGPVAGASRQENGASVILRDIARARENIQKSLAGSSGPGAS  
 SGTSGDHGELVVRIASLEVENQSLRGVVQELQQAI SKLEARLNVLKSSPGHRATAPQTQHVSPMRQVEP  
 PAKKPATPAEDDEDDIDLFGSDNEEDKEAAQLREERLRQYAEKKAKKPPALVAKSSILLDVKPWDDET  
 MAQLEACVRSIQLDGLVWGASKLVPVGYGIRKLQIQCVVEDDKVGTDLLEEEITKFEHVQSVDIAAFNK  
 I

TRTRPLEQKLISEEDLAANDILDYKDDDDKV

**Chromatograms:** [https://cdn.origene.com/chromatograms/mk6231\\_a09.zip](https://cdn.origene.com/chromatograms/mk6231_a09.zip)

**Restriction Sites:** SgfI-MluI

**Cloning Scheme:**



**ACCN:** NM\_001130055

**ORF Size:** 843 bp

**OTI Disclaimer:** The molecular sequence of this clone aligns with the gene accession number as a point of reference only. However, individual transcript sequences of the same gene can differ through naturally occurring variations (e.g. polymorphisms), each with its own valid existence. This clone is substantially in agreement with the reference, but a complete review of all prevailing variants is recommended prior to use. [More info](#)

**OTI Annotation:** This clone was engineered to express the complete ORF with an expression tag. Expression varies depending on the nature of the gene.

**Components:** The ORF clone is ion-exchange column purified and shipped in a 2D barcoded Matrix tube containing 10ug of transfection-ready, dried plasmid DNA (reconstitute with 100 ul of water).

**Reconstitution Method:**

1. Centrifuge at 5,000xg for 5min.
2. Carefully open the tube and add 100ul of sterile water to dissolve the DNA.
3. Close the tube and incubate for 10 minutes at room temperature.
4. Briefly vortex the tube and then do a quick spin (less than 5000xg) to concentrate the liquid at the bottom.
5. Store the suspended plasmid at -20°C. The DNA is stable for at least one year from date of shipping when stored at -20°C.

**RefSeq:** [NM\\_001130055.3](#)

**RefSeq ORF:** 846 bp

**Locus ID:** 1936

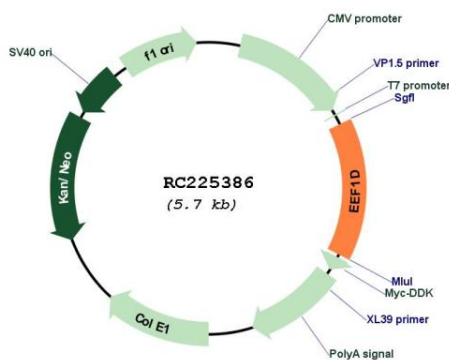
**UniProt ID:** [P29692](#)

**Cytogenetics:** 8q24.3

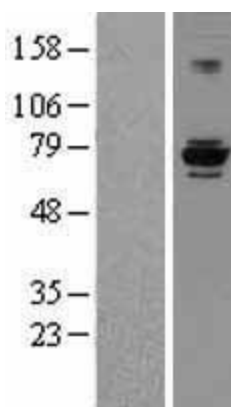
**MW:** 30.9 kDa

**Gene Summary:** This gene encodes a subunit of the elongation factor-1 complex, which is responsible for the enzymatic delivery of aminoacyl tRNAs to the ribosome. This subunit, delta, functions as guanine nucleotide exchange factor. It is reported that following HIV-1 infection, this subunit interacts with HIV-1 Tat. This interaction results in repression of translation of host cell proteins and enhanced translation of viral proteins. Several alternatively spliced transcript variants encoding multiple isoforms have been found for this gene. Related pseudogenes have been defined on chromosomes 1, 6, 7, 9, 11, 13, 17, 19.[provided by RefSeq, Aug 2010]

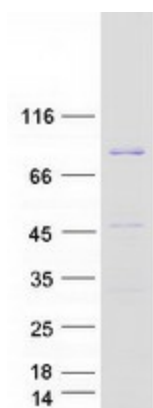
### Product images:



Circular map for RC225386



Western blot validation of overexpression lysate (Cat# [LY427135]) using anti-DDK antibody (Cat# [TA50011-100]). Left: Cell lysates from untransfected HEK293T cells; Right: Cell lysates from HEK293T cells transfected with [RC225387] using transfection reagent MegaTran 2.0 (Cat# [TT210002]).



Coomassie blue staining of purified EEF1D protein (Cat# [TP325386]). The protein was produced from HEK293T cells transfected with EEF1D cDNA clone (Cat# RC225386) using MegaTran 2.0 (Cat# [TT210002]).