

## Product datasheet for **RC225193**

### CD94 (KLRD1) (NM\_001114396) Human Tagged ORF Clone

#### Product data:

**Product Type:** Expression Plasmids  
**Product Name:** CD94 (KLRD1) (NM\_001114396) Human Tagged ORF Clone  
**Tag:** Myc-DDK  
**Symbol:** CD94  
**Synonyms:** CD94  
**Mammalian Cell Selection:** Neomycin  
**Vector:** pCMV6-Entry (PS100001)  
**E. coli Selection:** Kanamycin (25 ug/mL)  
**ORF Nucleotide Sequence:** >RC225193 ORF sequence  
Red=Cloning site Blue=ORF Green=Tags(s)

TTTTGTAATACGACTCACTATAGGGCGGCCGGAATTCGTCGACTGGATCCGGTACCGAGGAGATCTGCC  
GCC**CGATCGCC**

ATGGCAGTGTAAAGACCACTCTGTGGAGGTTAATTTCTGGGACCTTAGGGATAATATGCCTTTCGTTGA  
TGGCTACGTTGGGAATTTGTTGAAAAATCTTTACTAACTGAGTATTGAGCCAGCATTACTCCAGG  
ACCCAACATAGAAGCTCCAGAAAGACTCTGACTGCTGTTCTTGCCAAGAAAAATGGGTTGGGTACCGGTC  
AACTGTTACTTCAATTTCCAGTGAACAGAAAATGGAACGAAAGTCGGCATCTCTGTCTTCTCAGAAAT  
CCAGCCTGCTTCAGCTTCAAACACAGATGAAGTGGATTTATGAGCTCCAGTCAACAATTTACTGGAT  
TGGACTCTTACAGTGAGGAGCACACCGCCTGGTTGTGGGAGAATGGCTCTGCACTCTCCAGTATCTA  
TTTCCATCATTTGAACTTTAATACAAAAGAACTGCATAGCGTATAATCCAAATGGAAATGCTTTAGATG  
AATCCTGTGAAGATAAAAATCGTTATATCTGTAAGCAACAGCTCATT

**ACGCGT**ACGCGGCCGCTCGAGCAGAACTCATCTCAGAAGAGGATCTGGCAGCAAATGATATCCTGGATT  
ACAAGGATGACGACGATAAGGTTTAA

**Protein Sequence:** >RC225193 protein sequence  
Red=Cloning site Green=Tags(s)

MAVFKTTLWRLISGTLGIICLSMATLGILLKNSFTKLSIEPAFTPGPNIELQKSDCCSCQEKWVGYRC  
NCYFISSEQKWNESRHLCASQKSSLLQLQNTDELDFMSSSQFYWIGLSYSEEHTAWLWENGSAALSYQL  
FPSFETFNTKNCIAYNPNGNALDESCEDKNRYICKQQLI

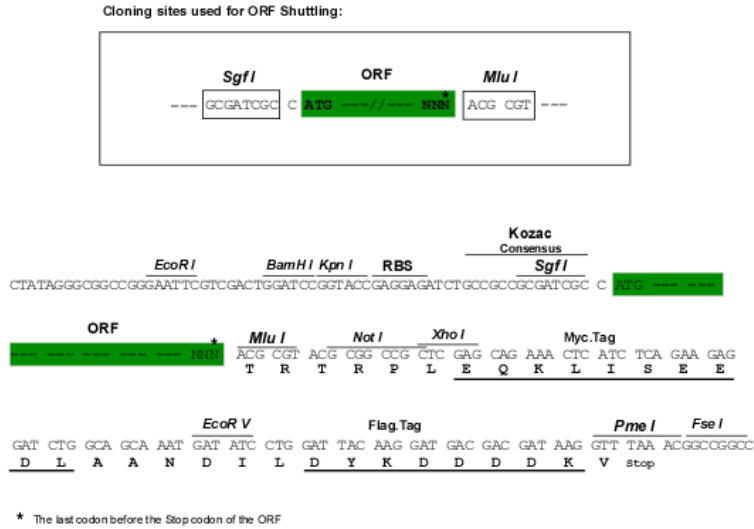
**TRTRPLEQKLISEEDLAANDILDYKDDDDKV**

**Chromatograms:** [https://cdn.origene.com/chromatograms/mk6331\\_g12.zip](https://cdn.origene.com/chromatograms/mk6331_g12.zip)



Restriction Sites: SgfI-MluI

Cloning Scheme:



ACCN: NM\_001114396

ORF Size: 537 bp

OTI Disclaimer: The molecular sequence of this clone aligns with the gene accession number as a point of reference only. However, individual transcript sequences of the same gene can differ through naturally occurring variations (e.g. polymorphisms), each with its own valid existence. This clone is substantially in agreement with the reference, but a complete review of all prevailing variants is recommended prior to use. [More info](#)

OTI Annotation: This clone was engineered to express the complete ORF with an expression tag. Expression varies depending on the nature of the gene.

Components: The ORF clone is ion-exchange column purified and shipped in a 2D barcoded Matrix tube containing 10ug of transfection-ready, dried plasmid DNA (reconstitute with 100 ul of water).

Reconstitution Method:

1. Centrifuge at 5,000xg for 5min.
2. Carefully open the tube and add 100ul of sterile water to dissolve the DNA.
3. Close the tube and incubate for 10 minutes at room temperature.
4. Briefly vortex the tube and then do a quick spin (less than 5000xg) to concentrate the liquid at the bottom.
5. Store the suspended plasmid at -20°C. The DNA is stable for at least one year from date of shipping when stored at -20°C.

RefSeq: [NM\\_001114396.1](#), [NP\\_001107868.1](#)

RefSeq Size: 3195 bp

RefSeq ORF: 540 bp

Locus ID: 3824

UniProt ID: [Q13241](#)

**Cytogenetics:** 12p13.2

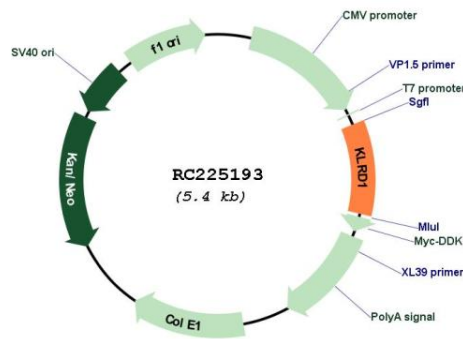
**Protein Families:** Transmembrane

**Protein Pathways:** Antigen processing and presentation, Graft-versus-host disease, Natural killer cell mediated cytotoxicity

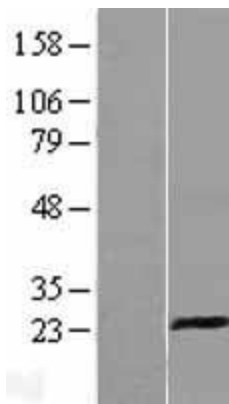
**MW:** 20.5 kDa

**Gene Summary:** Natural killer (NK) cells are a distinct lineage of lymphocytes that mediate cytotoxic activity and secrete cytokines upon immune stimulation. Several genes of the C-type lectin superfamily, including members of the NKG2 family, are expressed by NK cells and may be involved in the regulation of NK cell function. KLRD1 (CD94) is an antigen preferentially expressed on NK cells and is classified as a type II membrane protein because it has an external C terminus. Several transcript variants encoding different isoforms have been found for this gene. [provided by RefSeq, May 2017]

**Product images:**



Circular map for RC225193



Western blot validation of overexpression lysate (Cat# [LY426488]) using anti-DDK antibody (Cat# [TA50011-100]). Left: Cell lysates from untransfected HEK293T cells; Right: Cell lysates from HEK293T cells transfected with RC225193 using transfection reagent MegaTran 2.0 (Cat# [TT210002]).