

Product datasheet for RC224770

Fibronectin (FN1) (NM_002026) Human Tagged ORF Clone

Product data:

Product Type:	Expression Plasmids
Product Name:	Fibronectin (FN1) (NM_002026) Human Tagged ORF Clone
Tag:	Myc-DDK
Symbol:	FN1
Synonyms:	CIG; ED-B; FINC; FN; FNZ; GFND; GFND2; LETS; MSF; SMDCF
Vector:	pCMV6-Entry (PS100001)
E. coli Selection:	Kanamycin (25 ug/mL)
Cell Selection:	Neomycin
ORF Nucleotide Sequence:	>RC224770 representing NM_002026 Red=Cloning site Blue=ORF Green=Tags(s)

TTTTGTAATACGACTCACTATAGGGCGGCCGGAATTCGTCGACTGGATCCGGTACCGAGGAGATCTGCC
GCC**CGGATCGCC**

ATGCTTAGGGGTCGGGGCCCGGGCTGCTGCTGCTGGCCGTCCAGTGCCTGGGGACAGCGGTGCCCTCCA
CGGGAGCCTCGAAGAGCAAGAGGCAGGCTCAGCAAATGGTTCAGCCCCAGTCCCCGGTGGCTGTCAGTCA
AAGCAAGCCCGTTGTTATGACAATGGAAAACACTATCAGATAAATCAACAGTGGGAGCGGACCTACCTA
GGCAATGCGTTGGTTTGTACTTGTATGGAGGAAGCCGAGGTTTTAACTGCGAGAGTAAACCTGAAGCTG
AAGAGACTTGCTTTGACAAGTACACTGGAACTTACCGAGTGGGTGACACTTATGAGCGTCTAAAGA
CTCCATGATCTGGGACTGTACCTGCATCGGGGCTGGGCGAGGGAGAATAAGCTGTACCATCGAAACCGC
TGCCATGAAGGGGGTCAGTCTACAAGATTGGTGACACCTGGAGGAGACCACATGAGACTGGTGGTTACA
TGTTAGAGTGTGTGTCTTGGTAATGGAAAAGGAGAATGGACCTGAAGCCCATAGCTGAGAAGTGT
TGATCATGCTGCTGGGACTTCTATGTGGTGGGAGAACGTTGGGAGAAGCCCTACCAAGGCTGGATGATG
GTAGATTGACTTGCTGGGAGAAGGCAGCGGACGCATCACTTGCCTTCTAGAAAATAGTGAACGATC
AGGACACAAGGACATCCTATAGAATTGGAGACACCTGGAGCAAGAAGGATAATCGAGGAACTGCTCCA
GTGCATCTGCACAGGCAACGGCCGAGGAGAGTGAAGTGTGAGAGGCACACCTCTGTGCAGACCACATCG
AGCGGATCTGGCCCTTACCGATGTTCTGTCAGCTGTTTACCAACCGCAGCCTCACCCAGCCTCCTC
CCTATGGCCACTGTGTCACAGACAGTGGTGTGGTCTACTCTGTGGGGATGCAAGTGGTGAAGACACAAGG
AAATAAGCAAATGCTTTGCACGTGCTGGGCAACGGAGTCAGCTGCCAAGAGACAGCTGTAACCCAGACT
TACGGTGGCAACTCAAATGGAGAGCCATGTGTCTTACCATTACCTACAATGGCAGGACGTTCTACTCCT
GCACCACAGAAGGGGCACAGGACGGACATCTTTGGTGCAGCACAACCTCGAATTATGAGCAGGACCAGAA
ATACTCTTCTGCACAGACCACACTGTTTTGGTTCAGACTCGAGGAGGAAATCCAATGGTGCCTTGTGC
CACTTCCCCTTCTATAACAACACAATTACTGATTGCACTTCTGAGGGCAGAAGAGACAACATGA
AGTGGTGTGGGACCACACAGAATATGATGCCGACCAGAAGTTTGGGTTCTGCCCATGGCTGCCACGA
GGAAATCTGCACAACCAATGAAGGGTCAATGTACCGCATTGGAGATCAGTGGGATAAGCAGCATGCATG
GGTCACATGATGAGGTGCACGTGTGTTGGGAATGGTCGTGGGGAATGGACATGCATTGCCTACTCGCAGC



TTCGAGATCAGTGCATTGTTGATGACATCACTTACAATGTGAACGACACATTCCACAAGCGTCATGAAGA
GGGACACATGCTGAAGTGTACATGCTTCGGTCCAGGTCGGGGCAGGTGGAAGTGTGATCCCGTCGACCAA
TGCCAGGATTCAGAGACTGGGACGTTTTATCAAATGGAGATTCATGGGAGAAGTATGTGCATGGTGTCA
GATACCAAGTGTACTGCTATGGCCGTGGCATTGGGGAGTGGCATTGCCAACCTTTACAGACCTATCCAAG
CTCAAGTGGTCTGTGCAAGTATTTATCACTGAGACTCCGAGTCAGCCAACTCCCACCCATCCAGTGG
AATGCACCACAGCCATCTCACATTTCCAAGTACATTCTCAGGTGGAGACCTAAAAATTCTGTAGGCGGTT
GGAAGGAAGTACCATACCAGGCCACTTAACTCCTACACCATCAAAGGCCTGAAGCCTGGTGTGGTATA
CGAGGGCCAGCTCATCAGCATCCAGCAGTACGGCCACCAAGAAGTACTCGCTTTGACTTACCACCACC
AGCACCAGCACACCTGTGACCAGCAACCCGTGACAGGAGAGACGACTCCCTTTTCTCTTGTGGCCA
CTTCTGAATCTGTGACCGAAATCACAGCCAGTAGCTTTGTGGTCTCCTGGGTCTCAGCTTCGACACCGT
GTCGGGATTCGGGTGGAATATGAGCTGAGTGAGGAGGGAGATGAGCCACAGTACCTGGATCTTCCAAGC
ACAGCCACTTCTGTGAACATCCCTGACCTGCTTCTGGCCGAAAATACATTGTAATGTCTATCAGATAT
CTGAGGATGGGGAGCAGAGTTTGTCTGTCTACTTACAAAACAACAGCGCCTGATGCCCTCTGACCC
GACTGTGGACCAAGTTGATGACACCTCAATTGTTGTTGCTGGAGCAGACCCAGGCTCCATCACAGGG
TACAGAATAGTCTATTCGCCATCAGTAGAAGTACAGCAGCAGAACTCAACCTTCTGAAACTGCAAACT
CCGTACCCCTCAGTGACTTGCAACTGGTGTTCAGTATAACATCACTATCTATGCTGTGGAAGAAAATCA
AGAAAAGTACACCTGTTGTCAATCAACAAGAAACCCTGGCACCCACGCTCAGATACAGTGCCTCTCCC
AGGGACCTGCAGTTTGTGGAAGTACAGACGTGAAGGTACCATCATGTGGACACCGCCTGAGAGTGCAG
TGACCCGGTACCGTGTGGATGTGATCCCGTCAACCTGCCTGGCAGCAGCGGCAGAGGCTGCCATCAG
CAGGAACACCTTTGCAGAAGTACCCGGGCTGTCCCTGGGGTCACTATTACTTCAAAGTCTTGCAGTG
AGCCATGGGAGGGAGAGCAAGCCTCTGACTGCTCAACAGACAACCAAACCTGGATGCTCCCACTAACCTCC
AGTTTGTCAATGAAACTGATTCTACTGCTGCTGGTGGAGTGGACTCCACCTCGGGCCAGATAACAGGATA
CCGACTGACCGTGGCCCTTACCCGAAGAGGACAGCCAGCAGTACAATGTGGTCCCTGTCTCCAAG
TACCCACTGAGGAATCTGCAGCCTGCATCTGAGTACACCGTATCCCTCGTGGCCATAAAGGGCAACCAAG
AGAGCCCCAAAGCCACTGGAGTCTTTACCACACTGCAGCCTGGGAGCTCTATTCCACCTTACAACCCGA
GGTACTGAGACCACCATTTGTGATCACATGGACGCCTGCTCCAAGAATTGGTTTTAAGTGGGTGTACGA
CCAAGCCAGGGAGGAGAGGCCACCACGAGAAGTACTTCAACTCAGACTCAGGAAGCATCGTTGTGTCGGCTTGA
CTCCAGGAGTAGAATACGTCTACACCATCCAAGTCTGAGAGATGGACAGGAAAGAGATGCGCCAATTGT
AAACAAAGTGGTACACCATTGTCTCCACCAACAAACTGCATCTGGAGGCAAACCTGACTGGAGTG
CTCACAGTCTCCTGGGAGAGGAGCACCACCCAGACATTACTGGTTATAGAATTACCACAACCCCTACAA
ACGGCCAGCAGGAAATCTTTGGAAGAAGTGGTCCATGCTGATCAGAGCTCCTGCACTTTTGATAACCT
GAGTCCCGGCTGGAGTACAATGTGAGTGTTCACACTGTCAAGGATGACAAGGAAAGTGCCTATCTCT
GATACCATCATCCAGCTGTTCTCTCCCACTGACCTGCGATTACCAACATTGGTCCAGACACCATGC
GTGTCACCTGGGCTCCACCCCATCCATTGATTTAACCAACTTCTGGTGCCTTACTCACCTGTGAAAAA
TGAGGAAGATGTTGAGAGTTGTCAATTTCTCCTTCAACAATGCAGTGGTCTTAACAAATCTCCTGCCT
GGTACAGAATATGTAGTGTGCTCCAGTGTCTACGAACAACATGAGAGCACACCTCTTAGAGGAAGAC
AGAAAACAGGTCTTGATCCCAACTGGCATTGACTTTTCTGATATTACTGCAACTCTTTTACTGTGCA
CTGGATTGCTCCTCGAGCCACCATCACTGGCTACAGGATCCGCCATCATCCGAGCACTTCAAGTGGGAGA
CTCGAGAAGATCGGGTGCCTCCTCGGAATCCATCACCTCACCAACCTCACTCCAGGCACAGAGT
ATGTGGTCAAGTATCGTTGCTCTTAATGGCAGAGAGGAAAGTCCCTTATTGATTGGCCAACAATCAACAGT
TTCTGATGTTCCGAGGACCTGGAAGTTGTTGCTGCGACCCCAACAGCCTACTGATCAGCTGGGATGCT
CCTGCTGTACAGTGAGATATTACAGGATCACTTACGGAGAGACAGGAGGAAATAGCCCTGTCCAGGAGT
TCACTGTGCCTGGGAGCAAGTCTACAGCTACCATCAGCGCCTTAAACCTGGAGTTGATTATACCATCAC
TGTGTATGCTGTCACTGGCCGTGGAGACAGCCCGCAAGCAGCAAGCCAATTTCCATTAATTACCGAACA
GAAATTGACAAACCATCCAGATGCAAGTACCGATGTTCAAGGACAACAGCATTAGTGTCAAGTGGTGC
CTTCAAGTCCCCTGTTACTGGTTACAGAGTAAACCACTCCCAAAAATGGACCAGGACCAACAAAAAC
TAAACTGCAGGTCCAGATCAAACAGAAATGACTATTGAAGGCTTGCAGCCACAGTGGAGTATGTGGTT
AGTGTCTATGCTCAGAATCCAAGCGGAGAGAGTACGCCTCTGGTTCAAGTGCAGTAAACCAATTGATC
GCCCTAAAGGACTGGCATTCACTGATGTGGATGTCGATTCCATCAAAAATTGCTTGGGAAAGCCACAGGG
GCAAGTTTCCAGGTACAGGGTACCTACTCGAGCCCTGAGGATGGAATCCATGAGCTATTCCTGCACCT
GATGGTGAAGAAGACTGCAGAGCTGCAAGGCCTCAGACCGGTTCTGAGTACACAGTCAAGTGTGGTTG
CCTTGCACGATGATAGGAGAGCCAGCCCTGATTGGAACCCAGTCCACAGTATTCTGCACCAACTGA

CCTGAAGTTCACCTCAGGTACACCCACAAGCCTGAGCGCCAGTGGACACCACCAATGTTTCAGCTCACT
GGATATCGAGTGCGGGTGACCCCAAGGAGAAGACCGGACCAATGAAAGAAATCAACCTTCTCTGACA
GCTCATCCGTGGTGTATCAGGACTTATGGTGGCCACCAATAATGAAAGTGTCTATGCTCTTAAGGA
CACTTTGACAAGCAGACCAGCTCAGGGAGTTGTCACCACTCTGGAGAATGTCAGCCACCAAGAAGGGCT
CGTGTGACAGATGCTACTGAGACCACCATCACCATTAGCTGGAGAACCAAGACTGAGACGATCACTGGCT
TCCAAGTTGATGCCGTTCCAGCCAATGGCCAGACTCCAATCCAGAGAACCATCAAGCCAGATGTCAGAAG
CTACACCATCACAGGTTTACAACCAGGCACTACTACAAGATCTACCTGTACACCTTGAATGACAATGCT
CGGAGCTCCCCTGTGGTTCATCGACGCCTCCACTGCCATTGATGCACCATCCAACCTGCGTTTCTGGCCA
CCACACCAATTCTTGTGCTGATCATGGCAGCCGCCAGTGCCAGGATTACCGGTACATCATCAAGTA
TGAGAAGCCTGGGTCTCCTCCCAGAGAAGTGGTCCCTCGGCCCGCCCTGGTGTACAGAGGCTACTATT
ACTGGCCTGGAACCGGAAACCGAATATACAATTTATGTCATTGCCCTGAAGAATAATCAGAAGAGCGAGC
CCCTGATTGGAAGGAAAAAGACAGACGAGCTTCCCAACTGGTAACCCTTCCACACCCCAATCTTCATGG
ACCAGAGATCTTGGATGTTCTTCCACAGTTCAAAGACCCCTTTCGTCACCCACCCTGGGTATGACT
GAAATGGTATTAGCTTCTTGGCACTTCTGGTCAGCAACCCAGTGTGGCAACAAATGATCTTTGAGG
AACATGGTTTTAGGCGGACCACACCGCCACAACGGCCACCCCAATAAGGCATAGCCAAGACCATACCC
GCCAATGTAGGACAAGAAGCTCTCTCAGACAACCATCTCATGGGCCCATTCAGGACACTTCTGAG
TACATCATTTTATGTCATCTGTTGGCACTGATGAAGAACCCTTACAGTTCAGGGTTCCTGGAACCTCTA
CCAGTGCCACTCTGACAGGCCTCACCAGAGGTGCCACCTACAACATCATAGTGGAGGCACTGAAAGACCA
GCAGAGGCATAAGGTTCCGGAAGAGGTTGTTACCGTGGGCAACTCTGTCAACGAAGGCTTGAACCACT
ACGGATGACTCGTGCTTTGACCCCTACACAGTTTCCATTATGCCGTTGGAGATGAGTGGGAACGAATGT
CTGAATCAGGCTTAACTGTTGTGCCAGTGCTTAGGCTTTGGAAGTGGTCAATTCAGATGTGATTCATC
TAGATGGTGCCATGACAATGGTGTGAACACTACAAGATTGGAGAGAAGTGGGACCGTCAGGGAGAAAATGGC
CAGATGATGAGCTGCACATGTCTTGGGAACGAAAAGGAGAATTCAAGTGTGACCTCATGAGGCAACGT
GTTATGATGATGGGAAGACATACCACGTAGGAGAACAGTGGCAGAAGGAATATCTCGGTGCCATTTGCTC
CTGCACATGCTTTGGAGGCCAGCGGGCTGGCGCTGTGACAACCTGCCGCAGACCTGGGGGTGAACCCAGT
CCCGAAGGCACTACTGGCCAGTCTACAACCAGTATTCTCAGAGATACCATCAGAGAACAACACTAATG
TTAATTGCCCAATTGAGTGCTTCATGCCTTAGATGTACAGGCTGACAGAGAAGATTCCCGAGAG

ACGCGTACGCGGCCGCTCGAGCAGAACTCATCTCAGAAGAGGATCTGGCAGCAATGATATCTGGATT
ACAAGGATGACGACGATAAGGTTTAA

Protein Sequence: >RC224770 representing NM_002026
 Red=Cloning site Green=Tags(s)

```

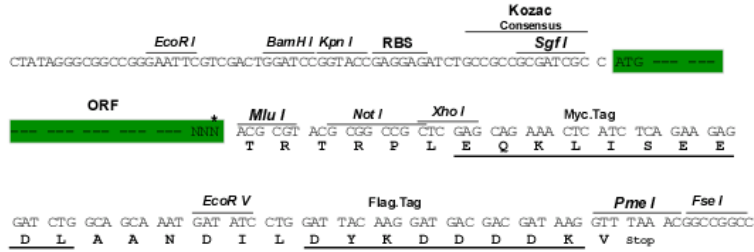
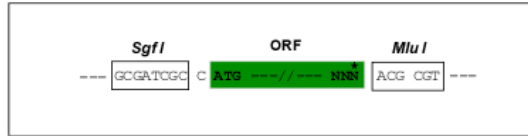
MLRGPGLLLLLAVQCLGTAVPSTGASKSKRQAQQMVQPQSPVAVSQSKPGCYDNGKHYQINQQWERTYL
GNALVCTCYGGSRGFNCEKPEAEETCFDKYTGNTYRVGDTYERPKDSMIWDCTCIGAGRGRISCTIANR
CHEGGQSYKIGDTRRRPHETGGYMLECVCLGNGKGEWTKPIAEKCFDHAAGTSYVVGETWEKPYQGWMM
VDCTCLGEGSGRITCTSRNRCNDQDTRTSYRIGDTWSKKNRGNLLQCICTGNRGEWK CERHTSVQTTT
SGSGPFTDVRAAVYQPQPHPPPYGHCVTDSGVVYVSGMQWLKTQGNKQMLCTCLGNGVSCQETA VTQT
YGGNSNGEPCVLPFTYNGRTFYSC TTEGRQDGHLCWSTTSNYEQDQKYSFCTDHTVLVQTRGNSNGALC
HFPFLYNNHNYTDCTSEGRDNMKWCGTQNYDADQKFGFCMAAHEEICTTNEGVMYRIGDQWDKQHDM
GHMMRCTCVGNRGEWTCIAYSQLRDQCI VDDITYNVNDFHHRHEEGHMLNCTCFGQGRGRWKCDPVDQ
CQDSETGTFYQIGDSWEKYVHGVRVYQCYCYGRGIGEWHCQPLQTYPSSSGPVEVFI TETSPQNSHPIQW
NAPQPSHISKYILRWRPKNSVGRWKEATIPGHLNSYTIKGLKPGVYVYEGQLISIQYQGHQEVTRDFTTT
STSTPVTNNTVTGETTFFSPLVATSESVTEITASSFVSWVSASDTVSGFRVEYELSEEGDEPQYLDLPS
TATSVNIPDLLPGRKYIVNVYQISEDEQSLILSTSQTAPDAPPDPTVDQVDDTIVVRSRQPAPITG
YRIVYSPSVEGSSTELNLPETANSVTLSDLQPGVQYNITIIYAVEENQESTPVVIQETTGT PRSDTVSP
RDLQFVEVTDVKVTIMWTPPE SAVTYRVDVIPVNL PGEHGQRLPISRNTFAEVTGLSPGVTYFFKVFVAV
SHGRESKPLTAQQTTKLDAPTNLQFVNEDSTVLVRWTPPRAQITGYRLTVGLTRRQPRQYVNGPVSVK
YPLRNLQPASEYTVSLVAIKGNQESPKATGVFTTLQPGSSIPPYNTEVTE TTIIVITWTPAPRIGFKLGV
PSQGEAPREVTSDSGSIVVSGLTPGVEYVYTIQVLRDQGERDAPIVNKVVTPLSPPTNLHLEANPDTGV
LTVSWERSTTDPDITGYRITTTPTNGQQGNSLEEVHADQSSCTFDNLSPGLEYNVSVYTVKDDKESVPI
DTIIPAVPPPTDLRFTNIGPDMRVTWAPPPSIDL TNFLVRYSPVKNEEDVAELSI SPSDNAVVL TNLLP
GTEYVVSVSVEYQHESTPLRGRQKTGLDSDITANSFTVHWIAPRATITGYRIRHHPEHFSGR
PREDRVPHSRNSITLNLTPGTEYVVSIVALNGREE SPLLI GQQSTVSDVPRDLEVVAATPTSLLSWDA
PAVTVRYRITYGETGGNSPVQEFVTPGSKSTATISGLKPGVDYITVYAVTGRGDSPASSKPI SINYRT
EIDKPSQMQVTDVQDNSISVKWLPSSSPVTGYRVTTTPKNGPGPTKTKTAGPDQTEMTIEGLQPTVEYV
SVYAQNPSGESQPLVQTA VTNIDRPKGLAFTDVDVDSIKIAWESPQQVSRVRYVYSSPEDGIHELFPAP
DGEEDTAEQLRPGSEYTVSVVALHDDMESQPLIGTQSTAIPAPD LKFTQVTPTLSAQWTPPNVQLT
GYRVRVTPKEKTGPMKEINLAPDSSVVVSGLMVATKYEVSVYALKDTLTSRPAQGVVTTLENVSPRRR
RVTDATETITISWRKTETITGFQVDVAVPANGQTP IQRTIKPDVRSYITIGLQPGTDYKIYLYTLNDNA
RSSPVVIDASTAIDAPSNLRF LATTPNLLVSWQPPRARITGYIIKYEKPGSPREVPRPRPGVTEATI
TGLEPGTEYTIYVIALKNNQKSEPLIGRKKTDEL PQLVTLPHPNLHGPEILDVPSTVQKTPFVTHPGYDT
NGIQLPGTSGQQPSVGQMI FEEHGFRRTTPPTATPIRHRPRPYPPNVGQEALSQTTISWAPFQDTSE
YIISCHPVGTDDEEPLQFRVPGTSTSATL TGLTRGATYNIIVEALKDQQRHKVREEVTVGNVNEGLNQP
TDDSCFDPYTVSHYAVGDEWERMSESGFKLLCQCLGFGSGHFRCDSSRWCHDNGVNYKIGEKWDRQGENG
QMMSCTCLGNGKGEFKCDPHEATCYDDGKTYHVGEQWQKEYLGAIC SCTCFGGQGRWRCNCRPPGGEPS
PEGTTGQSYNQYSQRYHQRNTNTNVNCP IECFMPLDVQADREDSRE
  
```

TRTRPLEQKLISEEDLAANDILDYKDDDDKV

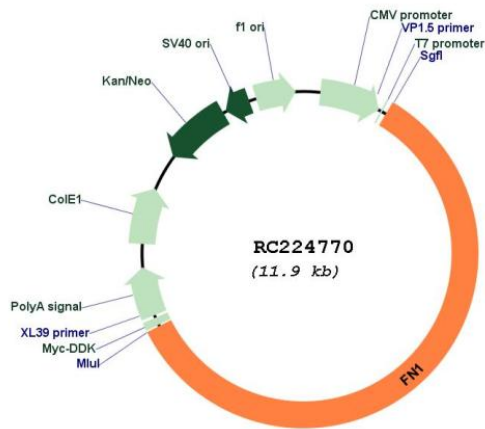
Restriction Sites: Sgfl-Mlul

Cloning Scheme:

Cloning sites used for ORF Shutting:



* The last codon before the Stop codon of the ORF

Plasmid Map:


ACCN: NM_002026

ORF Size: 7065 bp

OTI Disclaimer: The molecular sequence of this clone aligns with the gene accession number as a point of reference only. However, individual transcript sequences of the same gene can differ through naturally occurring variations (e.g. polymorphisms), each with its own valid existence. This clone is substantially in agreement with the reference, but a complete review of all prevailing variants is recommended prior to use. [More info](#)

OTI Annotation: This clone was engineered to express the complete ORF with an expression tag. Expression varies depending on the nature of the gene.

Components: The ORF clone is ion-exchange column purified and shipped in a 2D barcoded Matrix tube containing 10ug of transfection-ready, dried plasmid DNA (reconstitute with 100 ul of water).

Reconstitution Method:

1. Centrifuge at 5,000xg for 5min.
2. Carefully open the tube and add 100ul of sterile water to dissolve the DNA.
3. Close the tube and incubate for 10 minutes at room temperature.
4. Briefly vortex the tube and then do a quick spin (less than 5000xg) to concentrate the liquid at the bottom.
5. Store the suspended plasmid at -20°C. The DNA is stable for at least one year from date of shipping when stored at -20°C.

RefSeq: [NM_002026.3](#)

RefSeq Size: 8449 bp

RefSeq ORF: 7068 bp

Locus ID: 2335

UniProt ID: [P02751](#)

Cytogenetics: 2q35

Domains: FN1, FN2, FN3

Protein Families: Druggable Genome, ES Cell Differentiation/IPS, Secreted Protein

Protein Pathways: ECM-receptor interaction, Focal adhesion, Pathways in cancer, Regulation of actin cytoskeleton, Small cell lung cancer

MW: 259.23 kDa

Gene Summary: This gene encodes fibronectin, a glycoprotein present in a soluble dimeric form in plasma, and in a dimeric or multimeric form at the cell surface and in extracellular matrix. The encoded preprotein is proteolytically processed to generate the mature protein. Fibronectin is involved in cell adhesion and migration processes including embryogenesis, wound healing, blood coagulation, host defense, and metastasis. The gene has three regions subject to alternative splicing, with the potential to produce 20 different transcript variants, at least one of which encodes an isoform that undergoes proteolytic processing. The full-length nature of some variants has not been determined. [provided by RefSeq, Jan 2016]