

Product datasheet for **RC224300**

ENTPD5 (NM_001249) Human Tagged ORF Clone

Product data:

Product Type:	Expression Plasmids
Product Name:	ENTPD5 (NM_001249) Human Tagged ORF Clone
Tag:	Myc-DDK
Symbol:	ENTPD5
Synonyms:	CD39L4; NTPDase-5; PCPH
Mammalian Cell Selection:	Neomycin
Vector:	pCMV6-Entry (PS100001)
E. coli Selection:	Kanamycin (25 ug/mL)



[View online »](#)

ORF Nucleotide Sequence:

>RC224300 ORF sequence
 Red=Cloning site Blue=ORF Green=Tags(s)

TTTTGTAATACGACTCACTATAGGGCGGCCGGAATTCGTCGACTGGATCCGGTACCGAGGAGATCTGCC
 GCC**CGGATCGCC**

ATGCCACTTCTTGGGGCACAGTCTTTTTCATGCTGGTGGTATCCTGTGTTTGCAGCGCTGTCTCCACA
 GGAACCAGCAGACTTGGTTTGGAGGTATCTTCTGTCTTCCATGTGCCCATCAATGTCAGCGCCAGCAC
 CTTGTATGGAATTATGTTTATGTCAGGGAGCACTGGAACCTCAATTCATGTTTACACCTTTGTGCAGAAA
 ATGCCAGGACAGCTTCCAATTCTAGAAGGGGAAGTTTTGATTCTGTGAAGCCAGGACTTCTGCTTTTG
 TAGATCAACCTAAGCAGGGTCTGAGACCGTTCAAGGGCTCTTAGAGGTGGCCAAAGACTCAATCCCCCG
 AAGTCACTGGA AAAAGACCCAGTGGTCTAAAGGCAACAGCAGGACTACGTTACTGCCAGAACACAAA
 GCCAAGGCTCTGCTCTTTGAGGTAAAGGAGATCTTCAGGAAGTCACTTTCTGGTACCAAAGGGCAGTG
 TTAGCATCATGGATGGATCCGACGAAGGCATATTAGCTTGGGTTACTGTGAATTTCTGACAGGTCAGCT
 GCATGGCCACAGACAGGAGACTGTGGGGACCTTGACCTAGGGGGAGCCTCCACCCAAATCACGTTCTGT
 CCCAGTTTGGAAAACCTGGAACAACTCCTAGGGGCTACCTCACTTCTTTGAGATGTTTAAACAGCA
 CTATAAGCTCTATACATAGTTACCTGGGATTTGGATTGAAAGCTGCAAGACTAGCAACCTGGGAGC
 CCTGGAGACAGAAGGGACTGATGGGCACACTTCCGGAGTGCCTGTTTACCGAGATGGTTGGAAGCAGAG
 TGGATCTTTGGGGGTGTGAAATACCAAGTATGGTGGCAACCAAGAAGGGGAGGTGGGCTTTGAGCCCTGT
 ATGCCAAGTGTGAGGGTGTACGAGGAAAACCTCACAGCCAGAGGAGGTCCAGAGAGGTTCTTCTTA
 TGCTTTCTTACTATTATGACCGAGCTGTTGACACAGACATGATTGATTATGAAAAGGGGGGATTTTTA
 AAAGTTGAAGATTTTGAAGAAAAGCCAGGGAAGTGTGTGATAACTTGGAAAACCTCACCTCAGGCAGTC
 CTTTCTGTGCATGGATCTCAGTACATCACAGCCCTGTTAAAGGATGGCTTTGGCTTTGCAGACAGCAC
 AGTCTTACAGCTCACAAGAAAAGTGAACAACATAGAGACGGGCTGGGCCCTGGGGCCACCTTTCACCTG
 TTGCAGTCTCTGGGCATCTCCAT

ACGCGTACGCGGCCGCTCGAGCAGAACTCATCTCAGAAGAGGATCTGGCAGCAATGATATCCTGGATT
 ACAAGGATGACGACGATAAGGTTTAA

Protein Sequence:

>RC224300 protein sequence
 Red=Cloning site Green=Tags(s)

MATSWGTVFFMLVVSCVCSAVSHRNQQTWFEGIFLSSMCPINVSASTLYGIMFDAGSTGTRIHVYTFVQK
 MPGQLPILEGEVFDVSKPGLSAFVDQPKQGAETVQGLLEVAKDSIPRSHWKKTPVVLKATAGLRLLPEHK
 AKALLFEVKEIFRKSPFLVPGKSVSIMDGSDEGILAWVTVNFLTGQLHGHRQETVGLDLGGASTQITFL
 PQFEKLTLEQTTPRGYLTSEFEMFNSTYKLYTHSYLGFGLKAARLATLGALETEGTDGHTFRSACLPRWLEAE
 WIFGGVKYQYGGNQEGEVGFPCYAEVLRVVRGKLVHQPVEEVQRGSFYAFSYYDRAVDTDMIDYEKGGIL
 KVEDFERKAREVCDNLENFTSGSPFLCMDLSYITALLKDFGFADSTVLQLTKKVNNIETGWALGATFHL
 LQSLGISH

TRTRPLEQKLISEEDLAANDILDYKDDDDKV

Chromatograms:

https://cdn.origene.com/chromatograms/mk6606_c05.zip

Restriction Sites:

SgfI-MluI

Cloning Scheme:


ACCN: NM_001249

ORF Size: 1284 bp

OTI Disclaimer: The molecular sequence of this clone aligns with the gene accession number as a point of reference only. However, individual transcript sequences of the same gene can differ through naturally occurring variations (e.g. polymorphisms), each with its own valid existence. This clone is substantially in agreement with the reference, but a complete review of all prevailing variants is recommended prior to use. [More info](#)

OTI Annotation: This clone was engineered to express the complete ORF with an expression tag. Expression varies depending on the nature of the gene.

Components: The ORF clone is ion-exchange column purified and shipped in a 2D barcoded Matrix tube containing 10ug of transfection-ready, dried plasmid DNA (reconstitute with 100 ul of water).

Reconstitution Method:

1. Centrifuge at 5,000xg for 5min.
2. Carefully open the tube and add 100ul of sterile water to dissolve the DNA.
3. Close the tube and incubate for 10 minutes at room temperature.
4. Briefly vortex the tube and then do a quick spin (less than 5000xg) to concentrate the liquid at the bottom.
5. Store the suspended plasmid at -20°C. The DNA is stable for at least one year from date of shipping when stored at -20°C.

RefSeq: [NM_001249.5](#)

RefSeq Size: 2064 bp

RefSeq ORF: 1287 bp

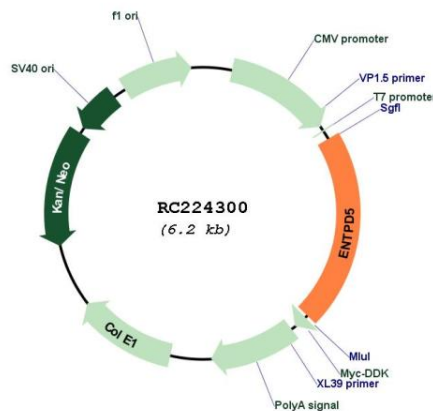
Locus ID: 957

UniProt ID: [O75356](#)

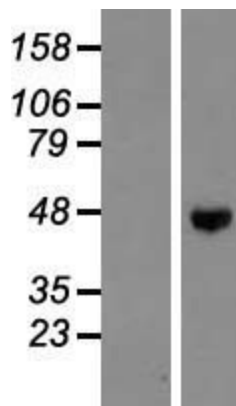
Cytogenetics: 14q24.3

Domains: GDA1_CD39
Protein Families: Transmembrane
Protein Pathways: Purine metabolism, Pyrimidine metabolism
MW: 47.5 kDa
Gene Summary: The protein encoded by this gene is similar to E-type nucleotidases (NTPases)/ecto-ATPase/apyrases. NTPases, such as CD39, mediate catabolism of extracellular nucleotides. ENTPD5 contains 4 apyrase-conserved regions which is characteristic of NTPases. [provided by RefSeq, Jan 2009]

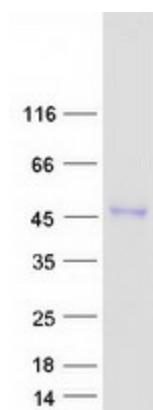
Product images:



Circular map for RC224300



Western blot validation of overexpression lysate (Cat# [LY420048]) using anti-DDK antibody (Cat# [TA50011-100]). Left: Cell lysates from untransfected HEK293T cells; Right: Cell lysates from HEK293T cells transfected with RC224300 using transfection reagent MegaTran 2.0 (Cat# [TT210002]).



Coomassie blue staining of purified ENTPD5 protein (Cat# [TP324300]). The protein was produced from HEK293T cells transfected with ENTPD5 cDNA clone (Cat# RC224300) using MegaTran 2.0 (Cat# [TT210002]).